

2019 AYC Wednesday Night Races - SI ATTACHMENT B – Courses

B1 STARTING LINES:

B1.1 Outer Starting Line

- (a) The starting area will be between FL "HP" and R"6".
- (b) The starting line will be between the staff or halyard with an orange flag displayed on the race committee signal vessel and the course side of the starting mark (a tall green cylinder).

B1.2 Inner Starting Line

- (a) The starting area will be between C"13", G"9" and Can "1SC".
- (b) The starting line will be between the staff with an orange flag on the race committee signal vessel and the course side of the starting mark (a short yellow cylinder).

B1.3 Club Starting Line

The starting line will be between the staff with an orange flag on the 2nd deck of the AYC Clubhouse and the flagpole with yard arm at the Annapolis City Marina.

B2 FINISH LINE

B2.1 The finishing line will be between the flagpole with yard arm at the Annapolis City Marina and the staff with an orange flag on the 2nd deck of the AYC Clubhouse.

B2.2 For courses that have N"8" as a mark, the race committee may shorten the course at N"8".

B3 MARKS

B3.1 For ALL courses, the following government marks shall be passed on the channel side: Can "1SC", FI "HP", FI R "4", and FI Y "A".

B3.2 The following government marks are used as course marks:

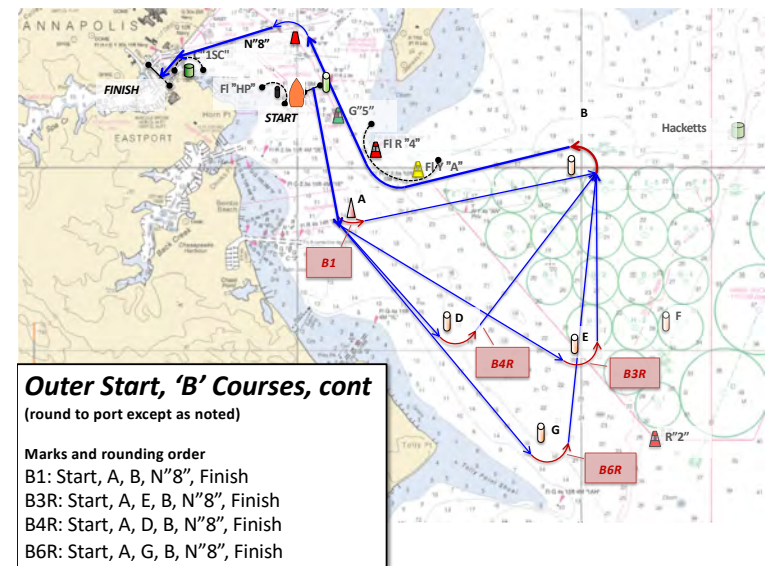
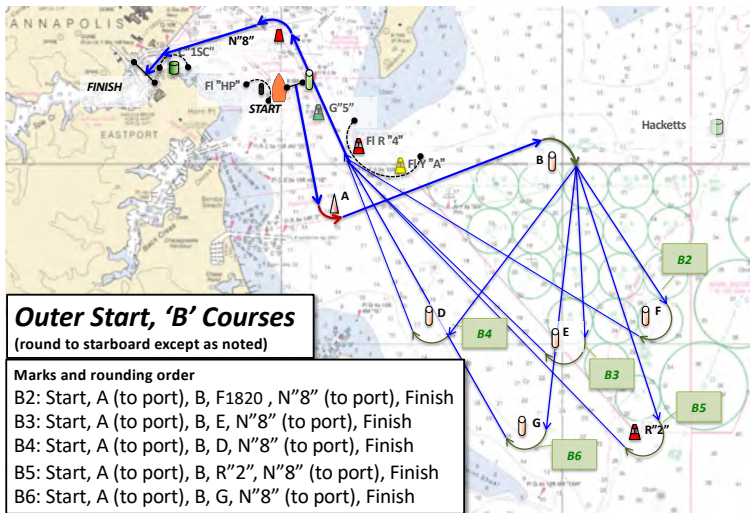
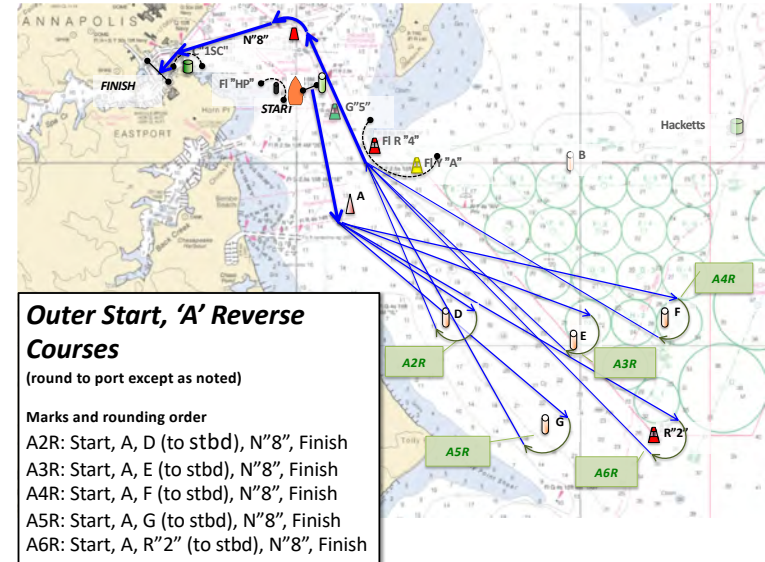
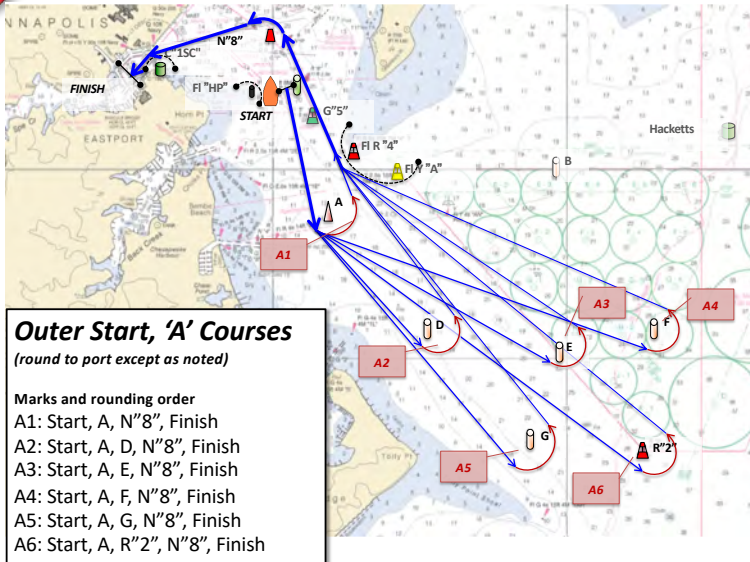
Name in Diagrams	Gov't Designation
Hacketts	Green "C1"
N"8"	Red Nun "8"
R"2"	Red Lighted Buoy "2"
G"5"	Green Lighted Buoy "5"
G"9"	Green Lighted Buoy "9"
N"14"	Red Nun "14"
C"13"	Green Can "13"
GR C "SC"	Red Green Can "SC"

B3.3 The following drop marks may be used (unused marks may not be set):

Mark	Description	Location (Lat, Lon)
A	Red Cone	varies between 38° 58.090' N 076° 27.487' W and 38° 57.617' N 076° 27.824' W
1	Short Orange Cylinder	varies between C"13", G"9" and Can "SC1"
2	Short Orange Cylinder	varies between C"13", G"9" and Can "SC1"
B	Tall Orange Cylinder	38° 58.043' N 076° 26.046' W
D	Tall Orange Cylinder	38° 57.174' N 076° 26.925' W
E	Tall Orange Cylinder	38° 57.043' N 076° 26.025' W
F	Tall Orange Cylinder	38° 57.183' N 076° 25.381' W
G	Tall Orange Cylinder	38° 56.548' N 076° 26.195' W

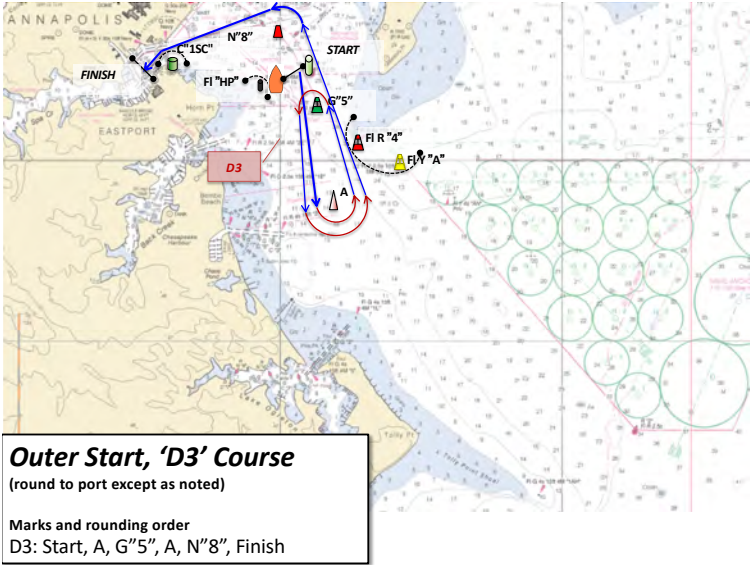
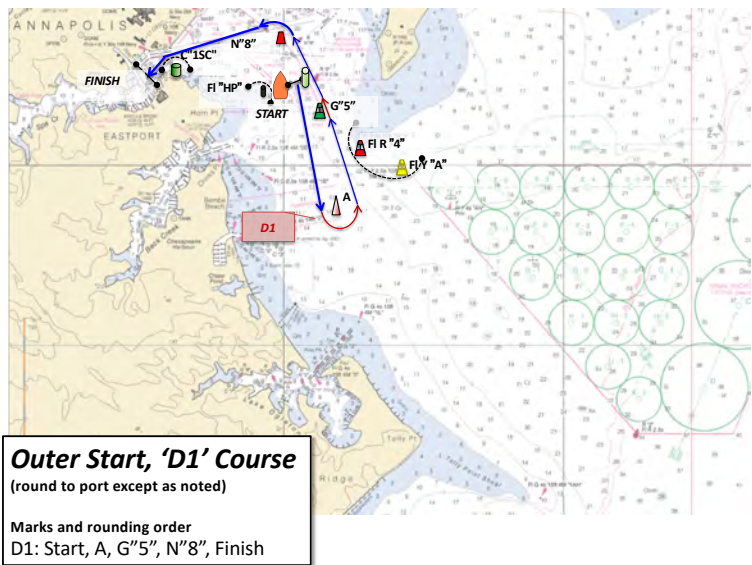
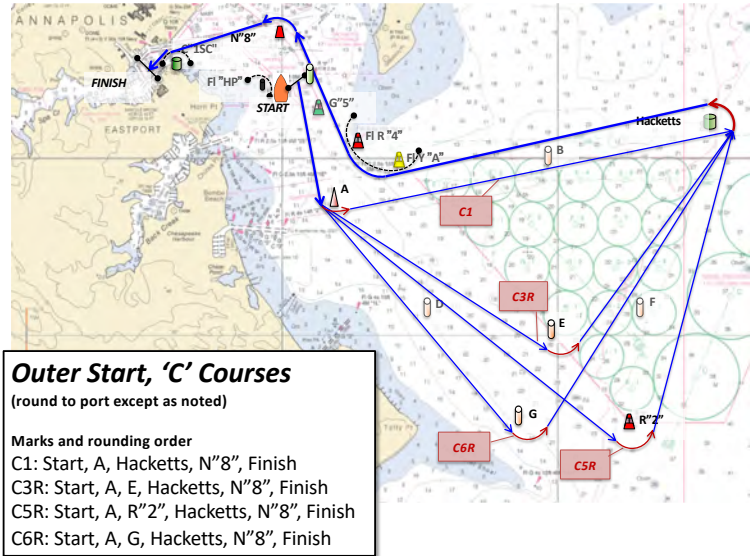
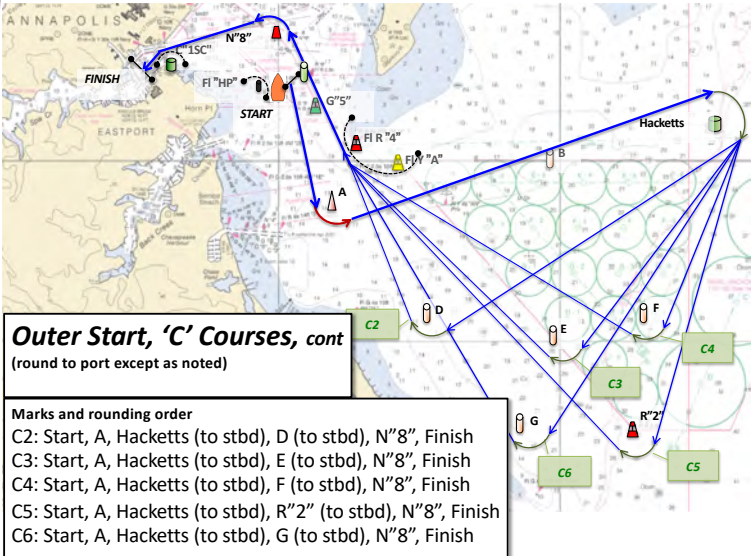


2019 AYC Wednesday Night Races - SI ATTACHMENT B – Courses



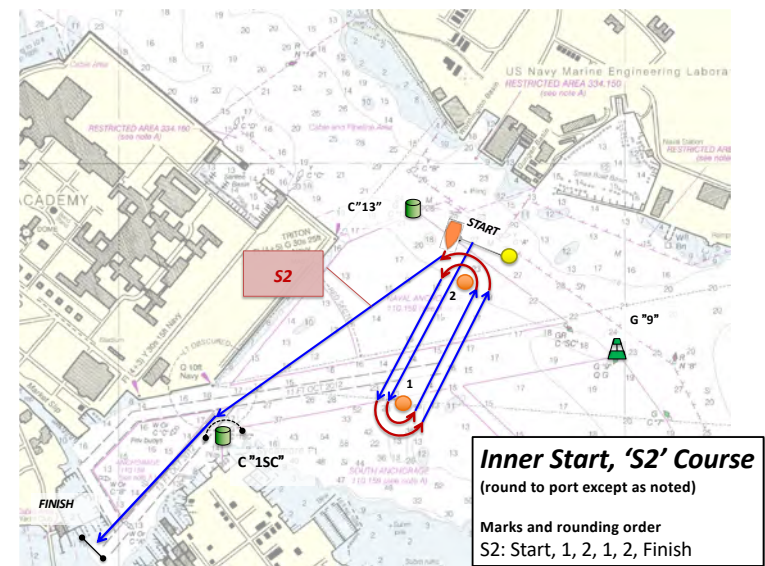
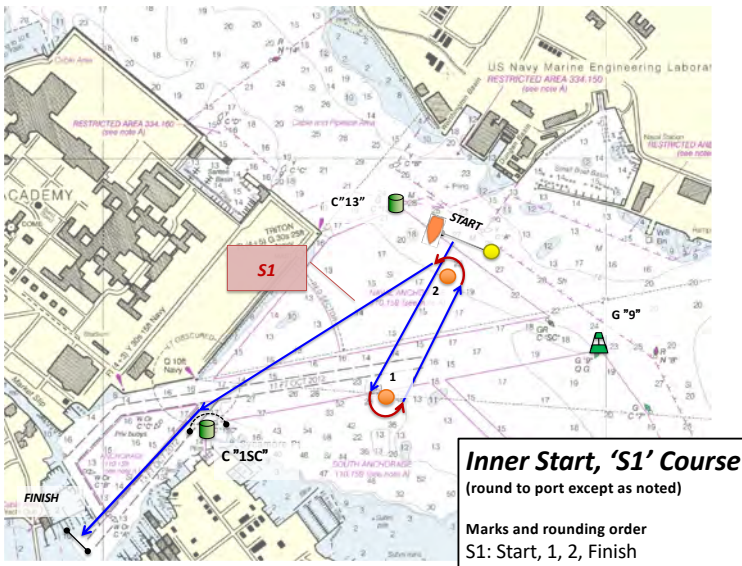
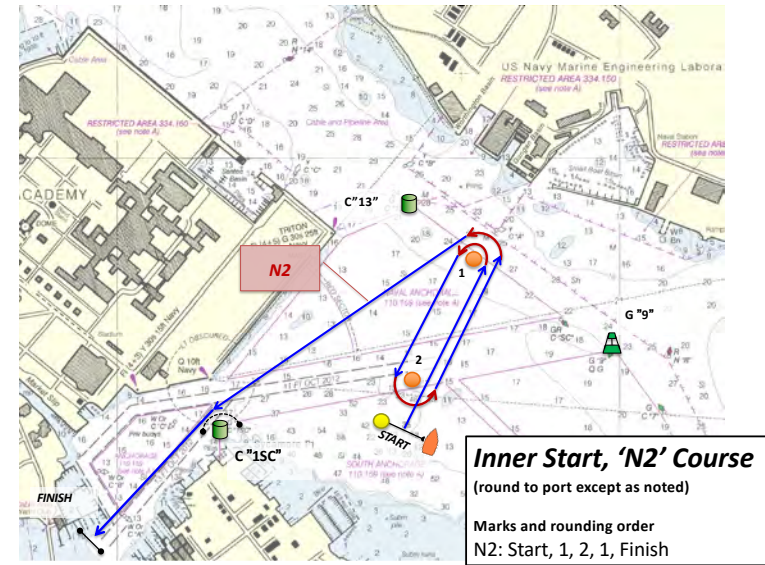
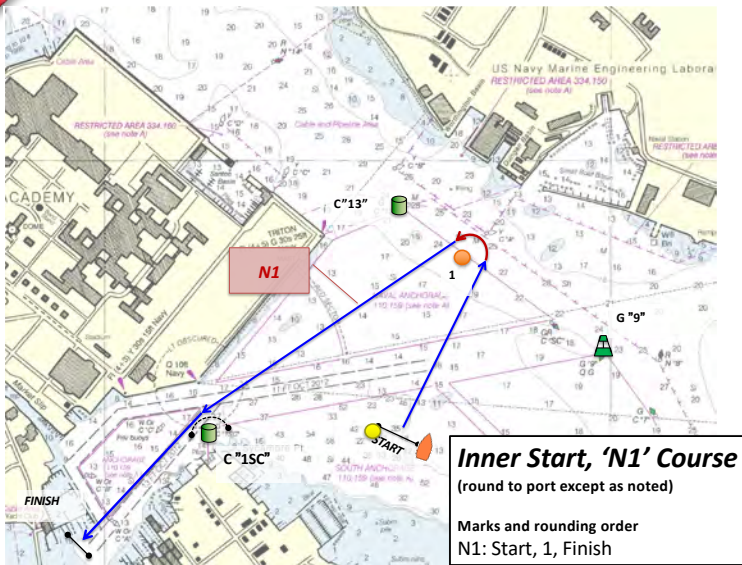


2019 AYC Wednesday Night Races - SI ATTACHMENT B – Courses



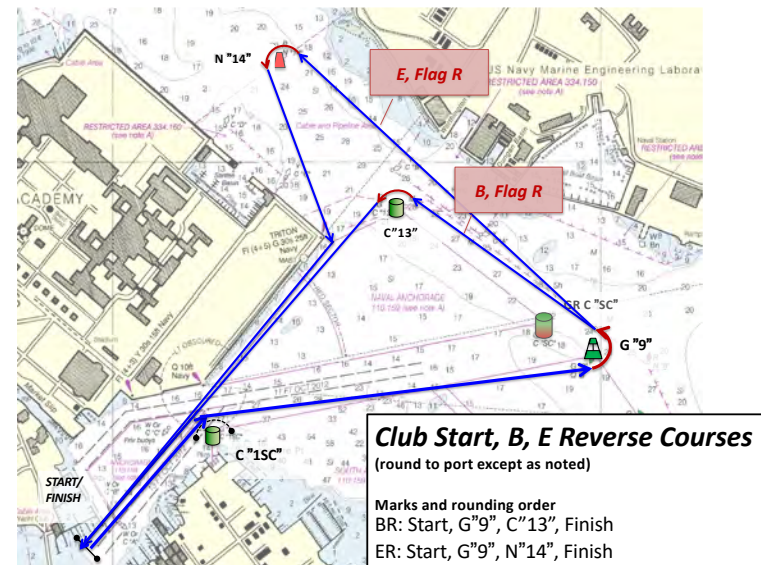
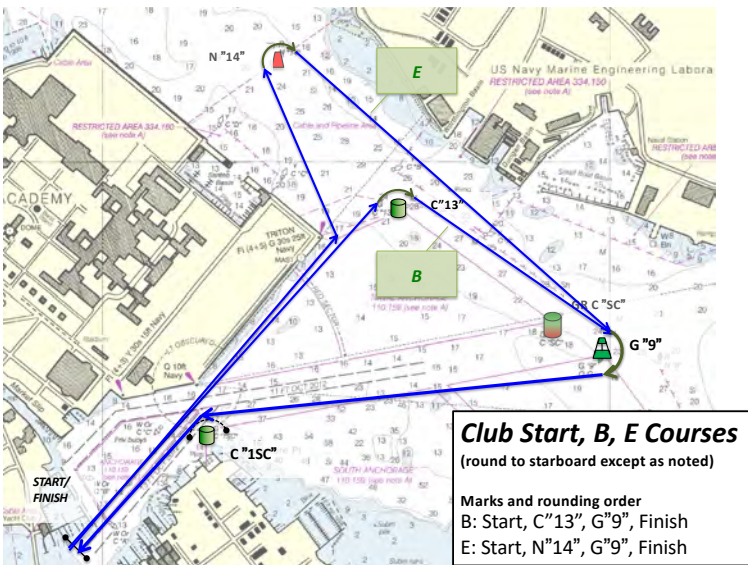
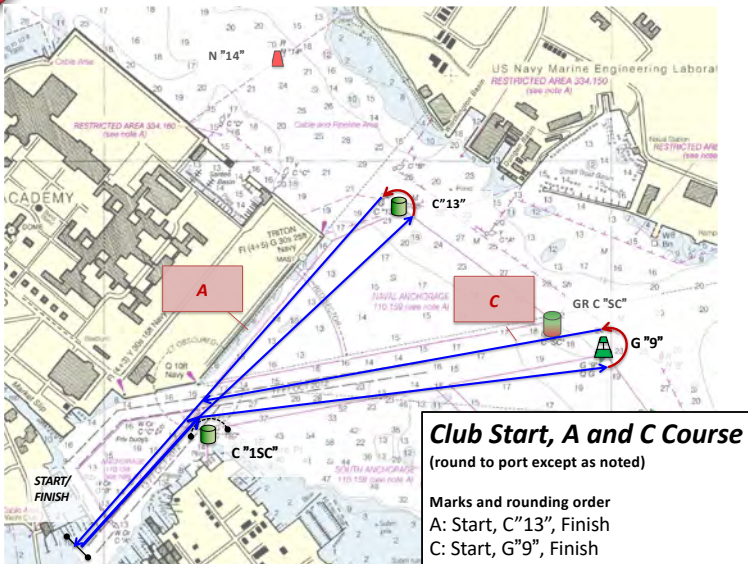


2019 AYC Wednesday Night Races - SI ATTACHMENT B – Courses





2019 AYC Wednesday Night Races - SI ATTACHMENT B – Courses





2019 AYC Wednesday Night Races - SI ATTACHMENT B – Courses

