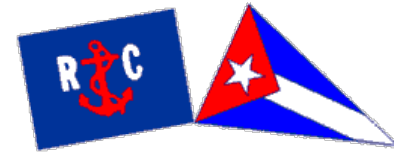


**2019 San Francisco Bay Area
Leukemia Cup
Sunday, October 20
SAILING INSTRUCTIONS**



Organizing Authority: The Corinthian Yacht Club of San Francisco (CYC)

1 RULES

- 1.1 The regatta will be governed by the rules as defined in *The Racing Rules of Sailing* (RRS).
- 1.2 The US Sailing prescriptions to rules 63.2 and 63.4 shall not apply.
- 1.3 The rules do not govern the navigation of non-participating vessels, which may be met during the course of racing. Competitors should exercise due caution that there be no violation of the applicable international or inland navigation and right-of-way rules. (See Attachment B for Commercial Traffic – Safety.)
- 1.4 Rule 40 is changed as follows: All competitors shall wear personal flotation devices while racing, except briefly while changing or adjusting clothing or personal equipment. Flag Y will not be displayed.
- 1.5 Appendix V1 (Penalty at the Time of an Incident) and Appendix V2 (Penalty Taken After a Race) shall apply.

2 NOTICES TO COMPETITORS

Notices to competitors will be posted on the official notice board located outside club office of the CYC Clubhouse. The NOR, SIs, and amendments thereto will be posted online at www.cyc.org.

3 CHANGES TO SAILING INSTRUCTIONS

Any change to the sailing instructions or race schedule will be posted before 0900 hours on the day of the race on the official notice board and online at www.cyc.org. A change on the water will be signaled with the Lima flag and announced on VHF prior to the warning signal of the classes affected. A change may affect multiple classes

4 RACE SCHEDULE

There will be one race on Sunday, October 20, 2019. The first warning signal will be 1200 hours.

5 CLASS FLAGS

Class flags will be alphabetic flags. Class flag designations and division splits will be published prior to the race. It is expected that the first start will be the Classic Yachts, followed by a delay to re-set the starting mark. Starts thereafter are expected to be done as a rolling start with faster classes first.

Signal	Class	Description
A	Classic Boats	Classic Boats
B	PHRF1	PHRF <=100
C	J/105	J/105
D	PHRF2	PHRF >100
E	NonSpin 1	NonSpinn PHRF <= 115
F	Knarr	Knarr
G	NonSpin 2	NonSpinn PHRF > 115 <160
H	NonSpin 3	NonSpinn PHRF >= 160
J	Superyacht	A very large sailboat

6 RACING AREA

The racing area will be in the Knox/Yellow Bluff/Central Bay Area.

7 THE COURSES

Attachment A shows the courses, the order in which marks are to be passed, and the side on which each mark is to be left. The course to be sailed will be designated by numeric placards displayed from the race

2019 Leukemia Cup Sailing Instructions

committee signal boat. Please note that different classes may have different designated courses.

8 MARKS

All marks are described in **Attachment A**.

AREAS THAT ARE OBSTRUCTIONS

- 8.1 **Boats shall not cross the Starting and Finish lines except when starting, preparing to start, or finishing.**
- 8.2 Boats shall not pass through a line formed by the following pairs of points. These areas are designated as obstructions.
 - (a) The “H” Beam (located approximately 200 yards west of the St. Francis YC) and the closest point ashore.
 - (b) Anita Rock and its Buoy “AR” or an orange temporary ball set to the North in close proximity to Anita Rock.
 - (c) The green/red bell buoy off the west end of Alcatraz Island and the closest point on Alcatraz Island.
 - (d) The buoy south of Point Blunt and the closest point on Angel Island.
 - (e) All breakwaters in the vicinity of Fisherman’s Wharf and Aquatic Park and the closest point ashore of each.

9 THE START

- 9.1 The starting area will be in the Knox area, to the west of Angel Island.
- 9.2 Classes may be started in any order, although the Race Committee anticipates starting the classes in the order to be announced
- 9.3 The starting line will be between a staff or halyard displaying an orange flag on the race committee signal boat and an orange or red inflatable buoy.
- 9.4 Boats whose warning signal has not been made shall stay clear of the starting area.
- 9.5 A boat starting later than 4 minutes after her starting signal will be scored Did Not Start (DNS). This changes rules A4.1 and A5.

NOTE: THE FIRST START IS THE CLASSIC YACHTS. PLEASE KEEP WELL CLEAR OF THE STARTING AREA DURING THEIR SEQUENCE, AS THEY HAVE LIMITED MANEUVERING ABILITY. A BRIEF DELAY IS ANTICIPATED IMMEDIATELY FOLLOWING THEIR START WHILE THE STARTING LINE IS RESET FOR SUBSEQUENT CLASSES.

10 THE FINISH

- 10.1 The finishing line will be located in the Knox area, to the west of Angel Island.
- 10.2 The finishing line will be between a staff or halyard displaying an orange flag on the race committee signal boat and a yellow inflatable buoy.

11 TIME LIMIT

Boats failing to finish by 1600 hours will be scored Time Limit Expired (TLE) without a hearing. This changes rules 35, A4 and A5.

12 PROTESTS AND REQUESTS FOR REDRESS

- 12.1 Protest forms are available at the Club Office. Protests, request for redress and request to reopen a hearing shall be filed at the Regatta Table within the applicable time limit. This changes rule 61.3.
- 12.2 The protest time is 60 minutes after the race committee signal boat docks. The time limit will be posted on the official notice board.
- 12.3 Notices will be posted on the official notice board within 30 minutes of the protest time limit to inform competitors of a hearing to which they are parties.

13 SCORING

- 13.1 PHRF divisions will be scored using time-on-time based on their NorCal PHRF handicaps. For the Classic Yachts with a PHRF rating, those ratings will be used. For Classic Yachts that do not have an assigned a

2019 Leukemia Cup Sailing Instructions

NorCal PHRF rating, the race committee will assign a PHRF-comparable rating, which shall not be grounds for requests for redress.

13.2 Classes given a one-design start will be scored as one-design fleets unless otherwise noticed.

14 SAFETY REGULATIONS

14.1 Check in: Boats are requested to check in with the race committee prior to the first warning signal by sailing past the signal boat on starboard tack and being acknowledged.

14.2 Check out: Boats leaving the racing area prior to the conclusion of racing are requested to notify the race committee by calling the signal boat on VHF USA channel 65A.

15 RADIO COMMUNICATIONS

15.1 The race committee may use VHF USA Channel 68 to communicate information about course selection, time and class to start, and the sail numbers of boats that are OCS or have violated rule 30. The failure of any boat to hear the hail, the hail of some but not all OCS boats, the untimely hail of some or all OCS boats, or failure to hail any or all boats shall not be grounds for redress. This changes rule 62.

15.2 **THE RACE COMMITTEE WILL CONDUCT A ROLL CALL OVER VHF AT 1500 HOURS OF BOATS THAT HAVE NOT YET FINISHED. BOATS STILL ON THE COURSE ARE REQUESTED TO RESPOND WITH THEIR CURRENT POSITIONS, INTENTIONS, AND IF INTENDING TO FINISH, ESTIMATED TIME OF FINISHING.**

16 PRIZES

Prizes will be awarded to the top boats in each division. The trophy presentation will be held on the CYC deck.

17 DISCLAIMER OF LIABILITY

Competitors participate in the regatta entirely at their own risk. See RRS 4, Decision to Race. The Organizing Authority will not accept any liability for damage or personal injury or death sustained in conjunction with or prior to, during, or after the regatta.

Michael Moradzadeh, Principal Race Officer
CYC Race Office: 415-435-4771 [racing@cyc.org](mailto: racing@cyc.org)

SOCIAL INFORMATION

Following the race, there will be a BBQ and general festivity on the CYC Main Deck, with trophies!

Registration Fee (1 per boat) Includes: Leukemia Cup Burgee, 1 BBQ Ticket + 2 Drink Tickets, Hat, T-shirt and Swag.

Additional BBQ and Drink Tickets for Crew will be on sale for \$35.00 per person at the Corinthian Yacht Club post-race.

Skippers should pick up their skipper Bags at CYC on Saturday between 2-4pm, or Sunday from 9-11am, or at the BBQ.

2019 Leukemia Cup Sailing Instructions

Attachment A - Description of Marks and Courses

Mark

“4”	YRA Mark, Red fixed buoy near Pt Knox, or inflatable if missing
“6”	YRA Mark 6, Yellow column “M” 200 yd North of Ft Mason Docks
“7”	YRA Mark 7, R “2” FI R 6s, approximately 1.3 nm NE of Alcatraz
“8”	YRA Mark 8, R “4” FI 4s Horn, 1 nm E of Point Blunt
“12”	YRA Mark 12, G “1” FI G 4s, Little Harding Rock
“15”	YRA Mark 15, CYC red inflatable approximately .3 nm E of Yellow Bluff
“16”	YRA Mark 16, approximately .2 nm E of Fort Point, Blackaller
“17”	YRA Mark 17, RG “HR” FI (2+1) R 6s, Harding Rock
“18”	YRA Mark 18, RG “BR” FI (2+1) G 6s, Blossom Rock
“21”	YRA Mark 21, G “1” FI G6s approximately 0.65 nm NE of Alcatraz
“N”	FI R 4s 14ft 3M “2” Sausalito Entrance Buoy
“A”	Yellow sphere outer starting line mark set north of StFYC
“AI”	Angel Island
“AZ”	Alcatraz Island

All marks listed above are Rounding Marks.

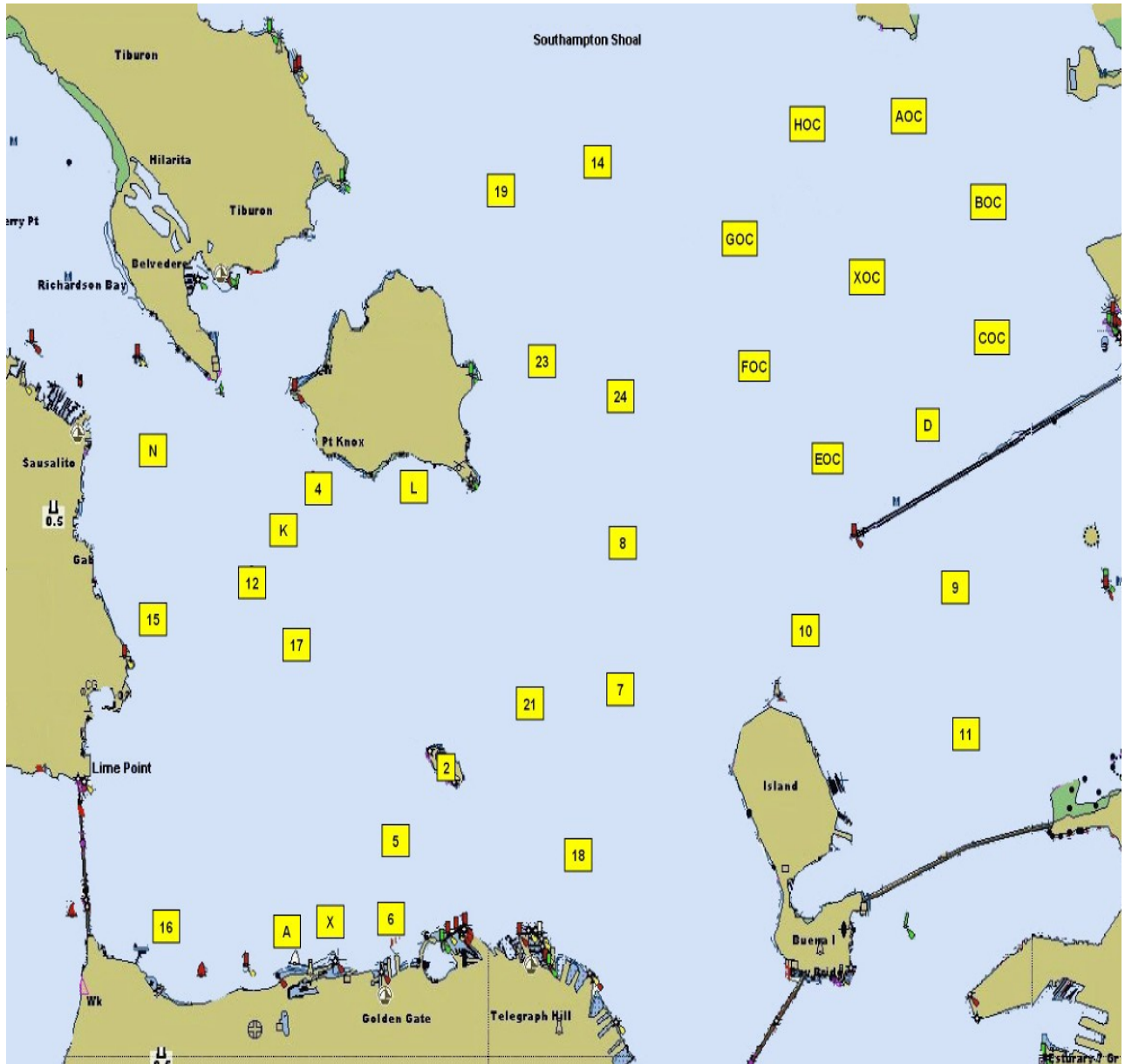
‘S’ denotes marks to be left to starboard.

‘P’ denotes marks to be left to port.

Course	Marks						
1	Start	12-S	4-P	12-S	4-P	12-S	FIN
2	Start	12-S	AI-S	12-S			FIN
3	Start	15-P	17-P	15-P	17-P	12-S	FIN
4	Start	15-P	17-P	15-P	4-P	12-S	FIN
5	Start	15-P	4-P	15-P	17-P	12-S	FIN
6	Start	15-P	8-P	12-S			FIN
7	Start	15-P	8-P	15-P	17-P	12-S	FIN
8	Start	16-P	18-P	12-S			FIN
9	Start	16-P	18-P	AZ-P	12-S		FIN
10	Start	16-P	4-P	12-S	N-P		FIN
12	Start	16-P	4-P	16-P	4-P	12-S	FIN
13	Start	16-S	15-S	12-P	N-P	8-P	FIN
14	Start	17-P	18-P	15-P	17-P	12-S	FIN
15	Start	17-P	4-P	17-P	4-P	12-S	FIN
16	Start	18-P	AZ-S	8-P	12-S		FIN
17	Start	6-S	16-P	AZ-P	15-P		FIN
18	Start	6-S	16-S	17-S	18-P	12-S	FIN
19	Start	6-S	4-P	6-S	4-P	12-S	FIN
20	Start	6-S	4-P	12-S			FIN
21	Start	8-P	4-P	15-P	16-P		FIN
23	Start	AZ-S	18-S	15-S	17-P	12-S	FIN
24	Start	N-P	16-P	17-S	6-P	12-S	FIN
25	Start	N-P	16-S	15-S	18-P	12-S	FIN
26	Start	N-P	17-P	4-P	12-S		FIN
27	Start	N-P	18-P	12-S			FIN

2019 Leukemia Cup Sailing Instructions

YRA Marks (for reference only)



2019 Leukemia Cup Sailing Instructions

Attachment B

Commercial Traffic – Safety

- B1** Boats shall not impede the passage of commercial vessels and shall comply with the U.S. Inland Navigation Rules Act of 1980.
- B2** If a commercial vessel has sounded five blasts, and/or the vessel or the United States Coast Guard identifies an offending boat, the race committee shall protest the boat, in which case the Protest Committee shall presume that the identified boat has impeded passage or violated the U.S. Inland Navigation Rules, and the identified boat shall have the burden of proving otherwise. In the case of a complaint by Vessel Traffic or the United States Coast Guard, the protest time limit shall be extended up to two days after the conclusion of the regatta. This changes RRS 60.2(a) and 61.3.
- B3** A race committee boat may signal a boat to alter course to avoid impeding the passage of commercial vessels by making a sound signal (horn or whistle) and pointing Code Flag V at the boat. The signaled boat shall promptly comply with the signal unless compliance would create an unsafe condition. If a boat fails to comply with such a signal, the race committee shall protest the boat, in which case the protest committee shall presume that the course alteration would not have created an unsafe condition, and the protested boat shall have the burden of proving otherwise.
- B4** A boat may be penalized independently under B1, B2 and/or B3. A violation of any part this appendix shall not be exonerated by a Scoring Penalty. The SFYC shall cooperate with and provide relevant information to the United States Coast Guard or other governmental authority regarding investigations of boats impeding ship traffic or violating U.S. Inland Navigation Rules.