

2019 Heald Bank Offshore Race and Pirates Pursuit Bay Race

June 28 – 29, 2019

Organizing Authority: Bay Access Sailing Foundation

Hosted by Lakewood Yacht Club

2322 Lakewood Yacht Club Drive

Seabrook, TX 77586

281-474-2511

LakewoodYachtClub.com

SAILING INSTRUCTIONS

The notation '[DP]' in a rule in the Sailing Instructions (SI) means that the penalty for a breach of a rule may, at the discretion of the protest committee, be less than disqualification.

1. RULES

- 1.1 The regatta will be governed by the rules as defined in The Racing Rules of Sailing (RRS).
- 1.2 Between dusk and dawn the rules of Part 2 of the RRS (When Boats Meet) are replaced by the International Regulations for Preventing Collisions at Sea 1972 (COLREGs).
- 1.3 RRS are changed as follows:
 - 1.3.1 SI 8.3 changes RRS 32.
 - 1.3.2 SI 8.4 changes RRS 33.
 - 1.3.3 SI 11.1.4 changes RRS A1 and A5.
 - 1.3.4 SI 15.3 changes RRS 35, A4 and A5.
 - 1.3.5 SI 18.1.4 changes RRS 42.
 - 1.3.6 SI 18.1.5 changes RRS A5 and 63.1.

2. NOTICES TO COMPETITORS

- 2.1 Notices to competitors will be posted on the official notice board located online on the BuccaneerBash.info website on the NEWSROOM & RESULTS MENU. [Notice Board](#)

3. CHANGES TO SAILING INSTRUCTIONS

- 3.1 Any written change to the sailing instructions will be posted before 0900 hours on the day it will take effect, except that any change to the schedule of races will be posted by 2000 hours on the day before it will take effect.
- 3.2 Oral changes to the sailing instructions may be given on the water by hail on VHF channel 72 in accordance with RRS 90.2(c).

4. SIGNALS MADE ASHORE

4.1 Signals made ashore will be displayed online on the Regatta Network page. [Notice Board](#)

4.2 When flag AP is displayed on the beach in Galveston, “1 minute” is replaced with “not less than 1 minute” in the race signal AP.

4.3 Other signals will be displayed ashore in Galveston, and they will have their normal meaning as if being made from a race committee signal boat.

5. SCHEDULE OF RACES

5.1 Dates of racing:

OFFSHORE	BAY RACE
Friday, June 28 th - Saturday, June 29 th , 2019	Saturday, June 29 th , 2019

5.2 Number of races:

OFFSHORE	BAY RACE
1	1

5.3 The scheduled time for the warning signal for the first race each day is:

OFFSHORE		BAY RACE
Spinnaker	Non-Spinnaker	No earlier than 1340
no earlier than 1415	no earlier than 1355	

6. CLASS FLAGS and GROUP FLAGS

6.1 OFFSHORE RACE ONLY: In the skipper’s package, each boat was provided with a souvenir flag which can also be used as a Bay Race Group Flag for those who are gluttons for punishment.

6.2 Class Flags will be:

<i>Class</i>	<i>Flag</i>
All Spinnaker	Pink
All Non-Spinnaker	Green

6.3 BAY RACE ONLY: In the skipper’s package, each BAY RACE boat was provided with a group color flag. Beginning no later than ten minutes before her scheduled race start, each BAY RACE boat shall fly her group color flag from either the backstay or a starboard shroud until she finishes or retires from the race.

BAY RACE GROUP FLAGS	
Multihull	Orange
PHRF Non-Spin	Green

7. RACING AREAS

7.1 OFFSHORE RACE ONLY: Attachment 1 shows the location of the racing area.

7.2 BAY RACE ONLY: Attachment 4 shows the location of the racing area.

8. THE COURSES

8.1 OFFSHORE RACE ONLY: The diagrams in Attachment 2 show the courses, including the approximate angles between legs, the order in which marks are to be passed, and the side on which each mark is to be left

8.2 BAY RACE ONLY: The diagrams in Attachment 5 show the course, including the approximate angles between legs, the order in which marks are to be passed, and the side on which each mark is to be left. The approximate course length will be 11.7 NM.

8.3 Courses will not be shortened. This changes RRS 32.

8.4 Legs of the course will not be changed after the preparatory signal. This changes RRS 33.

9. MARKS

9.1 OFFSHORE RACE ONLY:

9.1.1 Starting and Finishing Marks will be Houston Ship Channel Mark 11 (HSC11), G "11" Fl G 2.5s and an orange flag on a staff located on the shore of Galveston Island to the south.

9.1.2 Rounding Mark locations are listed in a table in Attachment 1.

9.1.3 Available photographs of the marks are attached to these sailing instructions in Attachment 3

9.2 BAY RACE ONLY:

9.2.1 Starting and Finishing Marks will be Clear Lake Entrance Marker #1 and Marker #2.

9.2.2 Photographs of the marks are attached to these sailing instructions in Attachment 6

9.3 In the event a mark is missing, boats shall round the GPS coordinates provided.

10. AREAS THAT ARE OBSTRUCTIONS

N/A

11. THE START

11.1 OFFSHORE RACE ONLY:

11.1.1 Races will be started by using RRS 26.

11.1.2 The Starting Line is a line between Galveston Channel Green Marker #11 and a staff displaying an orange flag located on the southern shoreline, approximately 1,100 yards distance, and at a bearing of approximately 205 degrees (Magnetic) from HSC Green Marker #11. **CAUTION: Boats are advised to stay well clear of the shoreline to avoid shoal water!**

Sailing Instructions

11.1.3 Boats whose warning signal has not been made shall avoid the starting area during the starting sequence for other races. [DP]

11.1.4 A boat that does not start within 60 minutes after her starting signal will be scored Did Not Start without a hearing. This changes RRS A4 and A5.

11.2 BAY RACE ONLY:

11.2.1 Starting times will be determined by a boat's PHRF rating. The starting times are listed in Attachment #7. The starts are based on a course length of 11.75 nautical miles and are computed so that a yacht with a rating of 285 will start (base start time) at 1345 hours.

11.2.2 The Starting Line is a line between Clear Creek Channel Entrance Markers 1 and 2.

12. CHANGE OF THE NEXT LEG OF THE COURSE

N/A

13. THE FINISH

13.1 OFFSHORE RACE ONLY:

13.1.1 The finishing line will be a line between Galveston Channel Green Marker #11 and a staff displaying an orange flag located on the southern shoreline, approximately 1,100 yards distance, and at a bearing of approximately 205 degrees (Magnetic) from HSC Green Marker #11. **Caution: Boats are advised to stay well clear of the shoreline to avoid shoal water!**

13.1.2 Boats shall attempt to hail the Race Committee on VHF Channel 72 when passing Galveston Channel Marker 5A, identifying the boat by name and sail number.

13.1.3 Boats shall attempt hail the Race Committee again on VHF Channel 72 when preparing to cross the finishing line, identifying the boat by name and sail number. Boats crossing the finish line at night shall display a light on their mainsail number.

13.1.4 If the Race Committee is absent or does not acknowledge when a boat finishes, she shall record her finish time as follows: Finish time shall be marked when Galveston Channel Marker Green Marker #11 is at a compass bearing of 025 degrees (Magnetic) from the vessel's helm. GPS time shall be used. She shall report her finishing time and her position in relation to any nearby boats to the race committee at the first reasonable opportunity. This may be done by contacting the OFFSHORE Scorer, David Comeaux no later than 1500 hours, Saturday June 29, 2019. The information will be transmitted by email (comeauxvi@earthlink.net) or by text or voice recording to his mobile phone at (832) 993-5933.

13.2 BAY RACE ONLY

13.2.1 The finishing line will be a line between Clear Creek Entrance Markers 1 and 2.

13.2.2 A Race Committee boat may be in the vicinity, but each boat is responsible for reporting her own finishing time.

13.2.3 Boats shall text their finish time to the Race Committee at (281) 658-3610 at the first reasonable opportunity after finishing and shall identify any identifiable competing boats ahead and behind them. If discrepancy occur, photographic evidence of finish times and/or order will be appreciated and considered in resolving any questions.

14. PENALTY SYSTEM

14.1 For the PHRF Cruising Classic Canvas non-spin class, RRS 44.1 is changed so that the One - Turn Penalty replaces the Two-Turns Penalty.

14.2 A boat that takes any penalty under RRS 44.2 shall notify the Race Committee at the first reasonable opportunity after finishing, identifying the location, time, and name of any other boat involved in the incident. Racers are reminded of rule 44.1.b ("if the boat caused injury or serious damage or, despite taking a penalty, gained a significant advantage in the race or series by her breach, her penalty shall be to retire").

15. TIME LIMITS AND TARGET TIMES

15.1 OFFSHORE RACE ONLY: Time limits and target times are as follows:

<i>Time limit</i>	<i>Target time</i>
<i>22 hours after start</i>	<i>17-18 hours after start</i>

15.2 BAY RACE ONLY: Time limits and target times are as follows:

<i>Time limit</i>	<i>Target time</i>
<i>3 hours after start</i>	<i>2 hours after start</i>

15.3 Boats failing to finish within the time limit will be scored Did Not Finish without a hearing. This changes RRS 35, A4 and A5.

15.4 Failure to meet the target time will not be grounds for redress

16. PROTESTS AND REQUESTS FOR REDRESS

16.1 OFFSHORE RACE ONLY:

16.1.1 Boats intending to file a protest shall inform the race committee via VHF channel 72 within 10 minutes of that boat's finishing time.

16.1.2 Protest forms are available in the LYC Clubhouse Office or through US Sailing [link](#). Protests and requests for redress or reopening shall be delivered there within the appropriate time limit.

16.1.3 The protest time limit is June 29th, 2019 1700.

16.1.4 Notices of scheduled hearing times and locations will be posted within thirty (30) minutes of the expiration of the protest time limit to inform competitors of hearings in which they are parties or named as witnesses. Hearings are scheduled to be held in the Harbor room, beginning at the time posted.

16.1.5 Notices of protests by the race committee or protest committee will be posted to inform boats under RRS 61.1(b).

16.1.6 A request for redress based on a protest committee decision shall be delivered no later than 30 minutes after the decision was posted. This changes RRS 62.2

16.2 BAY RACE ONLY:

16.2.1 This is intended to be an informal friendly race; no formal protest procedure is in place. Boats are encouraged to resolve their differences on the water in the best Corinthian spirit.

17. SCORING

17.1 OFFSHORE RACE ONLY: Boats in will be scored using time-on-time (TOT) scoring.

17.2 BAY RACE ONLY: Each boat will be assigned a start time based on PHRF Time On Distance scoring and will be assigned a finishing place based on the order she crosses the finish line.

18. SAFETY REGULATIONS-OFFSHORE RACE ONLY

18.1 OFFSHORE RACE ONLY

18.1.1 Check In – Offshore Boats shall check in with the Race Committee on VHF Channel 72 after 1200 on the day the race begins and prior to the warning signal for their class start. Boats checking in shall report the number of individuals aboard. [DP]

18.1.2 A boat retiring from the race shall notify the Race Committee at the earliest opportunity. Retiring boats shall first attempt to notify the Race Committee via VHF Channel 72. Failing that, a retiring boat shall attempt to notify a competitor on the course for subsequent relay to the Race Committee. A retiring Offshore boat shall also notify the Finish Line Race Officer, David Comeaux at cell number (832) 993-5933 no later than June 29th, 2019 at 1200 hours. [DP] A retiring Pirates' Pursuit boat shall also notify the Race Committee via text at (281) 658-3610 no later than June 29th 2019 at 1700 hours.

18.1.3 A boat's failure to check in is not subject to protest by another boat.

18.1.4 If a skipper determines that it is necessary to use the boat's motor to manoeuvre in order to avoid interfering with a ship's safe passage, he may do so. However, when motoring, the boat may not advance position, and may only use the motoring for clearing the ship passage lane. Once cleared, the boat shall immediately cease motoring. This changes RRS 42. As soon as practical, the skipper shall advise the Race Committee of any action taken in accordance with this rule.

18.1.5 **Interfering with commercial traffic:** A boat is subject to immediate disqualification, without a hearing, if the Race Committee receives a report from a disinterested party that the boat interfered with commercial traffic while transiting to the race area, while *racing*, or while transiting to her mooring after *finishing*. This changes RRS A5 and 63.1.

19. REPLACEMENT OF CREW OR EQUIPMENT-OFFSHORE RACE ONLY

19.1 OFFSHORE RACE ONLY: Substitution of competitors after the skippers' meeting will not be allowed without prior written approval of the race committee [DP]

19.2 BAY RACE ONLY: A skipper must ensure that any late added crew member has submitted a waiver.

20. EQUIPMENT AND MEASUREMENT CHECKS

N/A

21. EVENT ADVERTISING

Competitor advertising will be restricted as follows: As a courtesy to our valued race sponsors, no advertising may be displayed on Lakewood Yacht Club premises without prior written permission of the Race Committee. [DP]

22. OFFICIAL BOATS

N/A

23. SUPPORT BOATS

N/A

24. TRASH DISPOSAL

Trash shall be disposed of in accordance with applicable laws.

25. HAUL-OUT RESTRICTIONS

N/A

26. DIVING EQUIPMENT AND PLASTIC POOLS

N/A

27. RADIO COMMUNICATION

The Race Committee will use VHF Channel 72 to communicate with racers, including the starting sequence. Except when communicating with the Race Committee on VHF Channel 72 as provided for in these Sailing Instructions, all boats should monitor VHF Channel 16.

28. PRIZES

28.1 Prizes, including Texas Navy Rum, will be given as follows:

28.1.1 One trophy: classes with three boats.

28.1.2 Two trophies: classes with four or five boats

28.1.3 Three trophies: classes with six to eight boats

28.1.4 Four trophies: classes with more than eight boats.

28.1.5 The name of overall class winner in the Offshore Spinnaker class will be engraved on the Old Winch Trophy.

28.1.6 The name of overall class winner in the Offshore non-spinnaker classes will be engraved on the Navigator Trophy.

28.2 The RC may award additional prizes at their discretion

28.3 Rum prizes will not be opened during the awards presentation and may not be consumed on the grounds of Lakewood Yacht Club but may be consumed on a boat docked within the Lakewood harbor.

28.4 The Heald Bank Offshore Regatta (aka the OFFSHORE RACE) is one of three events of the **Texas Offshore Circuit (TORC)**. (The GBCA Texas Race Week and the HYC Offshore Regatta constitute the other two events.)

28.4.1 **Texas Navy Trophy.** Boats sailing in the ORC Spinnaker Class will be eligible to compete for the TORC championship trophy, the Texas Navy Trophy, if they have entered all three regattas in the same class. For purposes of Texas Navy Trophy scoring, two races of the Texas Race Week Regatta will be scored, along with one of either the LYC Heald Bank or HYC Offshore. Eligible yachts will be scored against each other, and not against ineligible yachts.

28.4.2 **S. Rhoads Fisher Trophy.** Boats sailing in the PHRF Non-Spinnaker Class will be eligible for the S. Rhoads Fisher Trophy, if they have entered all three regattas in the same class. For purposes of S. Rhoads Fisher scoring, one race of the Texas Race Week Regatta will be scored, along with the LYC Heald Bank and HYC Offshore. Eligible yachts will be scored against each other, and not against ineligible yachts.

29. DISCLAIMER OF LIABILITY

Competitors participate in the regatta entirely at their own risk. See RRS 4, Decision to Race. The organizing authority will not accept any liability for material damage or personal injury, or death sustained in conjunction with or prior to, during, or after the regatta.

30. INSURANCE

Each participating boat shall be insured with valid third-party liability insurance with a minimum cover of \$300,000 per incident or the equivalent.

31. ATTACHMENTS

31.1 Attachment 1: Offshore Race Area & Mark Locations

31.2 Attachment 2: Offshore Courses

31.3 Attachment 3 Offshore Mark Photos

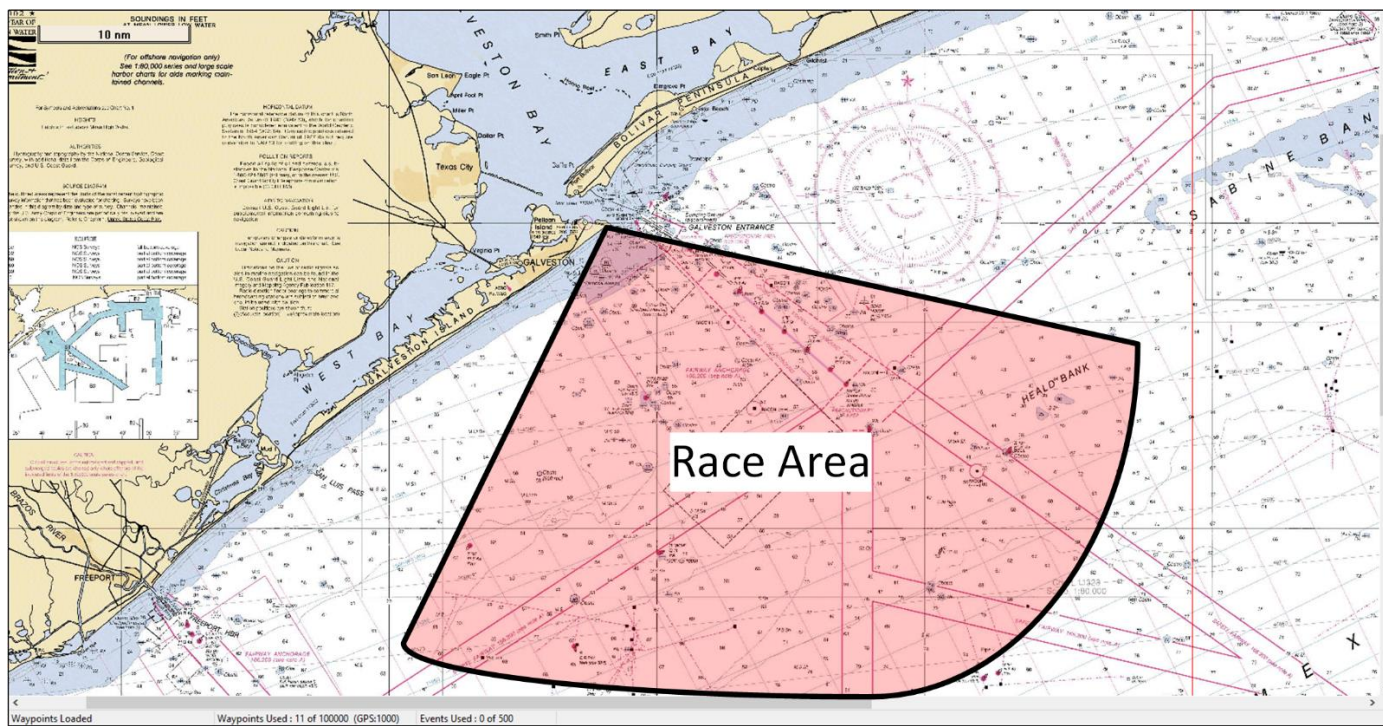
31.4 Attachment 4: Bay Race Area

31.5 Attachment 5: Bay Race Course, Mark Locations, Order, Side

31.6 Attachment 6: Bay Mark Photos

31.7 Attachment 7: Bay Race Start Times

Race Area



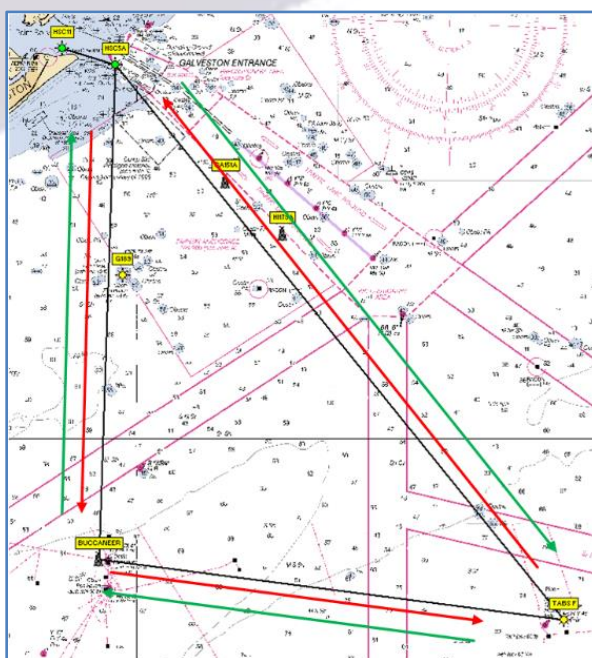
Offshore Mark Locations

Designation	Latitude	Longitude
HSC 11 (G "11" Fl G 2.5s)	29° 20.530'N	094° 44.470'W
HSC 5A (Iso G 6s 30ft 6M "5A" Ra Ref)	29° 19.642'N	094° 41.275'W
HI 179A (Platform)	29° 10.800'N	094° 31.260'W
Mitchell's Reef (Y "FR-TX-25" Fl Y 6s Priv)	29° 08.589'N	094° 40.820'W
Buccaneer Rig	28° 53.648'N	094° 42.263'W
TABS B (Y "B" Y 4s Priv)	28° 58.907'N	094° 53.976'W
TABS F (Y "F" Y 4s Priv)	28° 50.482'N	094° 14.467'W

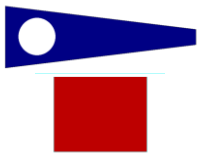
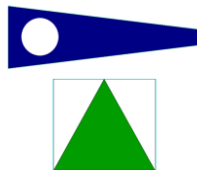
Attachment 2 Offshore Courses

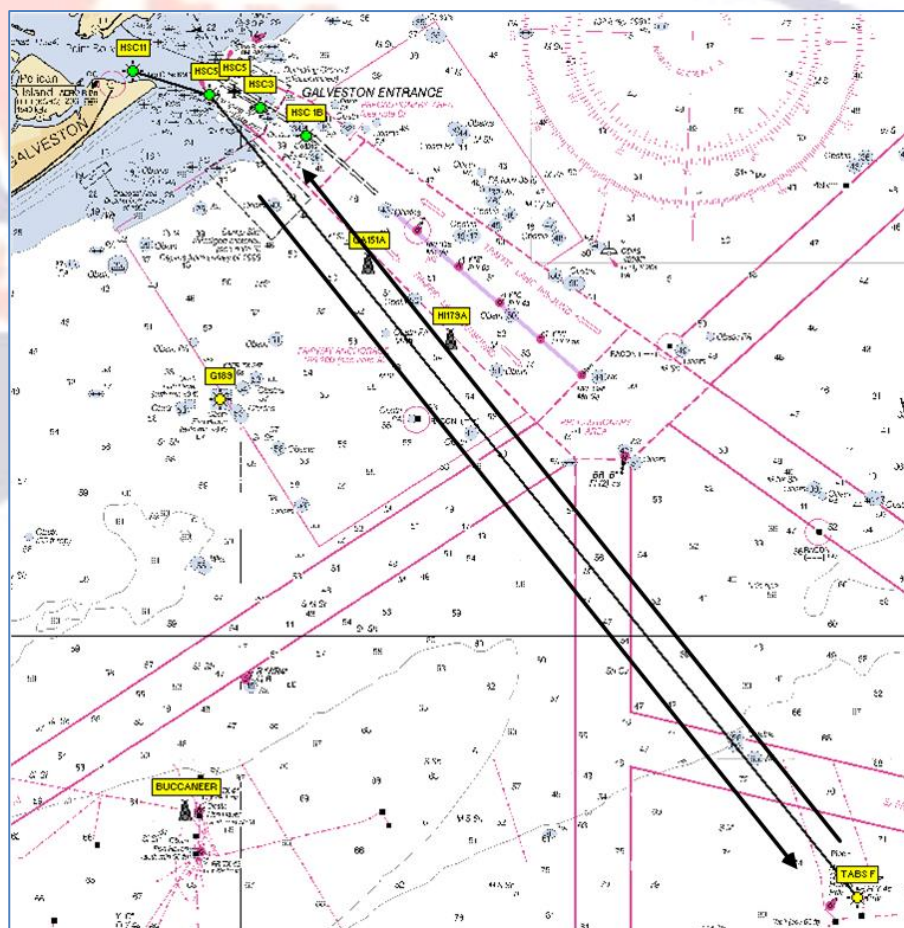
Course	"1 Red"			
	Leave to:	Bearing (Magnetic)	Leg distance(NM)	Accumulated distance(NM)
Start(HSC 11)	Port			
HSC 5A	Starboard	105	2.93	2.93
Buccaneer	Port	180	25.92	28.84
TABS F	Port	95	24.58	53.43
HSC 5A	Port	319	37.35	90.78
Finish (HSC 11)	Starboard	285	2.93	93.71

Course	"1 Green"			
	Leave to:	Bearing (Magnetic)	Leg distance(NM)	Accumulated distance(NM)
Start(HSC 11)	Port			
HSC 5A	Starboard	105	2.93	2.93
TABS F	Starboard	139	37.35	40.28
Buccaneer	Starboard	275	24.58	64.86
HSC 5A	Port	360	25.92	90.78
Finish (HSC 11)	Starboard	285	2.93	93.71



Attachment 2 Offshore Courses

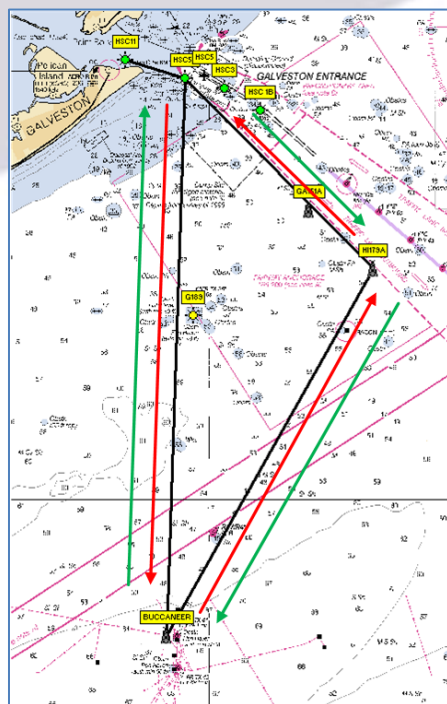
Course	"2 Red"	"2 Green"			
					
	Leave to:	Leave to:	Bearing (Magnetic)	Leg Distance(NM)	Total Distance(NM)
Start (HSC 11)	Port	Port	--	--	--
HSC 5A	Starboard	Starboard	105	2.93	2.93
TABS F	Port	Starboard	139	37.35	40.28
HSC 5A	Port	Port	319	37.35	77.63
Finish (HSC 11)	Starboard	Starboard	285	2.93	80.56

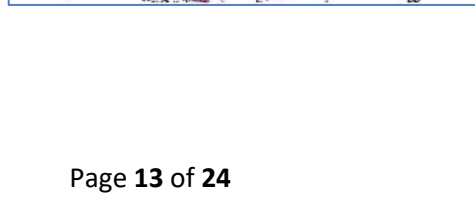


Attachment 2 Offshore Courses



Course	"3 Red"			
	Leave to:	Bearing(Magnetic)	Leg distance(NM)	Accumulated distance(NM)
Start (HSC 11)	Port			
HSC 5A	Starboard	105	2.93	2.93
Buccaneer	Port	180	25.92	28.85
HI 179A	Port	27	19.62	48.47
HSC 5A	Port	313	12.42	60.89
Finish (HSC 11)	Starboard	285	2.93	63.82



Course	"3 Green"			
	Leave to:	Bearing(Magnetic)	Leg distance(NM)	Accumulated distance(NM)
Start (HSC 11)	Port			
HSC 5A	Starboard	105	2.93	2.93
HI 179A	Starboard	139	12.42	15.35
Buccaneer	Starboard	276	19.62	34.97
HSC 5A	Port	360	25.92	60.89
Finish (HSC 11)	Starboard	285	2.93	63.82

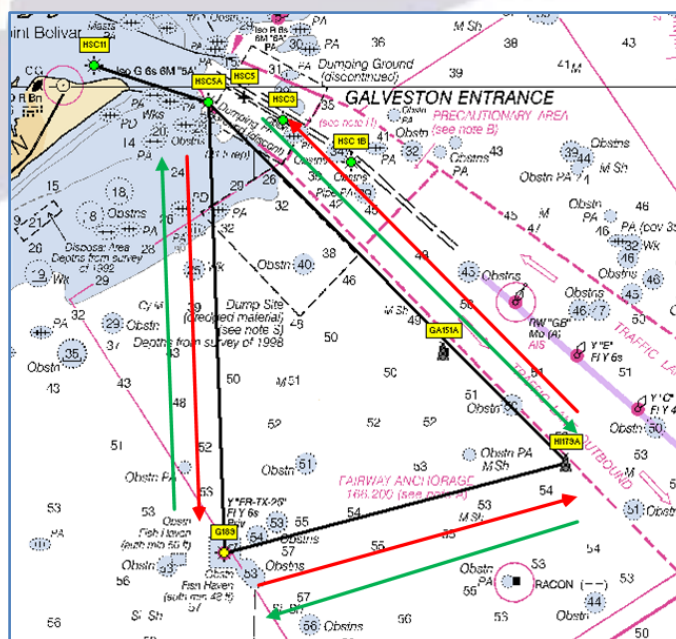





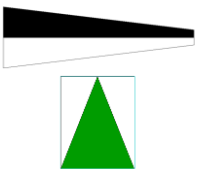
Attachment 2 Offshore Courses

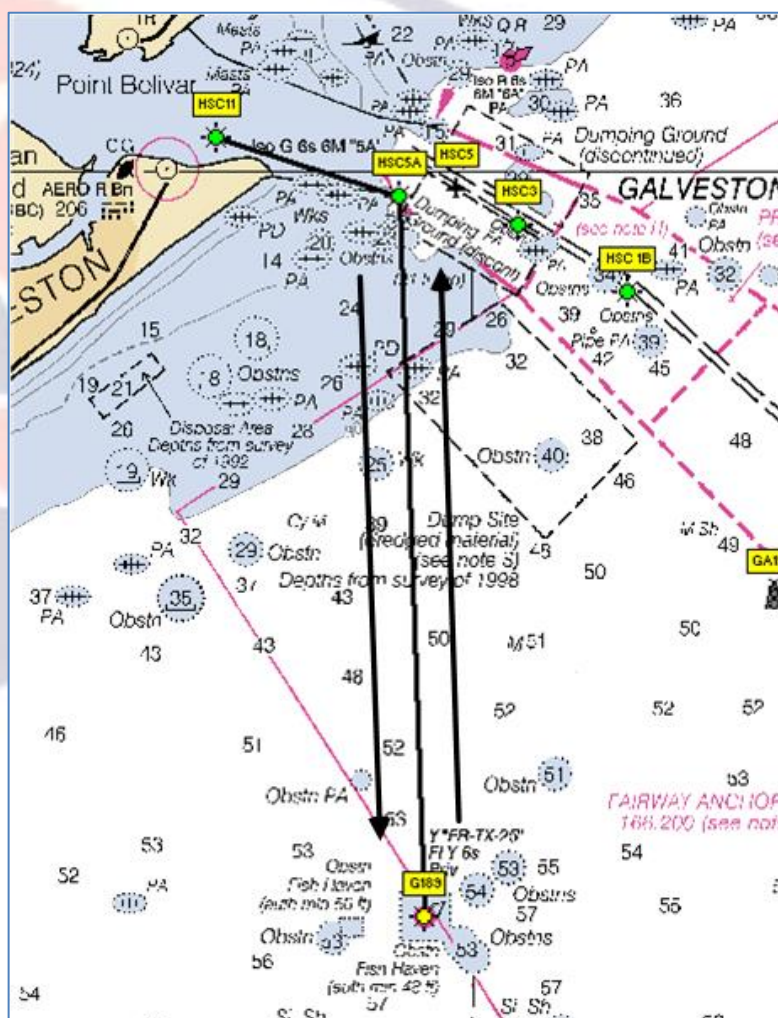
Course	“5 Red”			
	Leave to:	Bearing (Magnetic)	Leg distance(NM)	Accumulated distance(NM)
Start (HSC 11)	Port			
HSC 5A	Starboard	105	2.93	2.93
Mitchell’s Reef	Port	176	11.02	13.95
HI179A	Port	73	8.65	22.60
HSC 5A	Port	313	12.42	35.02
Finish (HSC 11)	Starboard	285	2.93	37.95

Course	“5 Green”			
	Leave to:	Bearing (Magnetic)	Leg distance(NM)	Accumulated distance(NM)
Start (HSC 11)	Port			
HSC 5A	Starboard	105	2.93	2.93
HI179A	Starboard	133	12.42	15.35
Mitchell’s Reef	Starboard	253	8.65	23.99
HSC 5A	Port	356	11.02	35.02
Finish (HSC 11)	Starboard	285	2.93	37.95


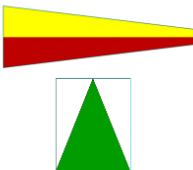


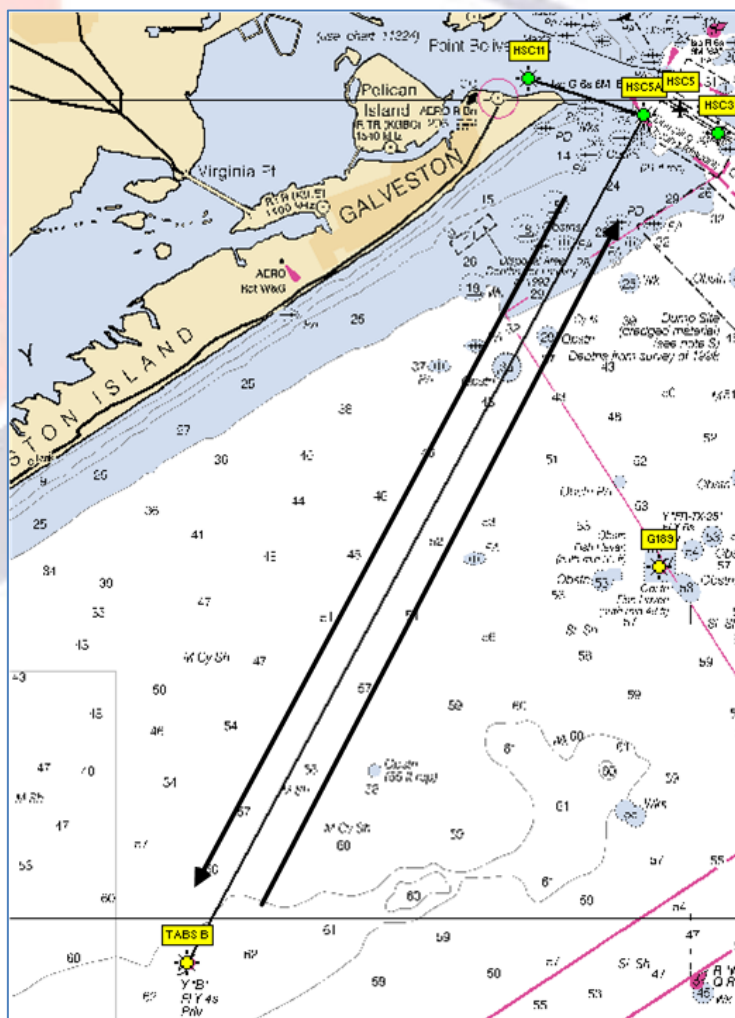
Attachment 2 Offshore Courses

Course	"6 Red"	"6 Green"			
					
	Leave to:	Leave to:	Bearing (Magnetic)	Leg Distance(NM)	Total Distance(NM)
Start (HSC 11)	Port	Port	--	--	--
HSC 5A	Starboard	Starboard	105	2.93	2.93
Mitchell's Reef	Port	Starboard	176	11.02	13.95
HSC 5A	Port	Port	356	11.02	24.97
Finish (HSC 11)	Starboard	Starboard	285	2.93	27.90





Attachment 2 Offshore Courses

Course	"7 Red"	"7 Green"			
					
	Leave to:	Leave to:	Bearing (Magnetic)	Leg Distance(NM)	Total Distance(NM)
Start (HSC 11)	Port	Port	--	--	--
HSC 5A	Starboard	Starboard	105	2.93	2.93
TABS B	Port	Starboard	206	23.46	26.39
HSC 5A	Port	Port	26	23.46	49.85
Finish (HSC11)	Starboard	Starboard	285	2.93	52.78

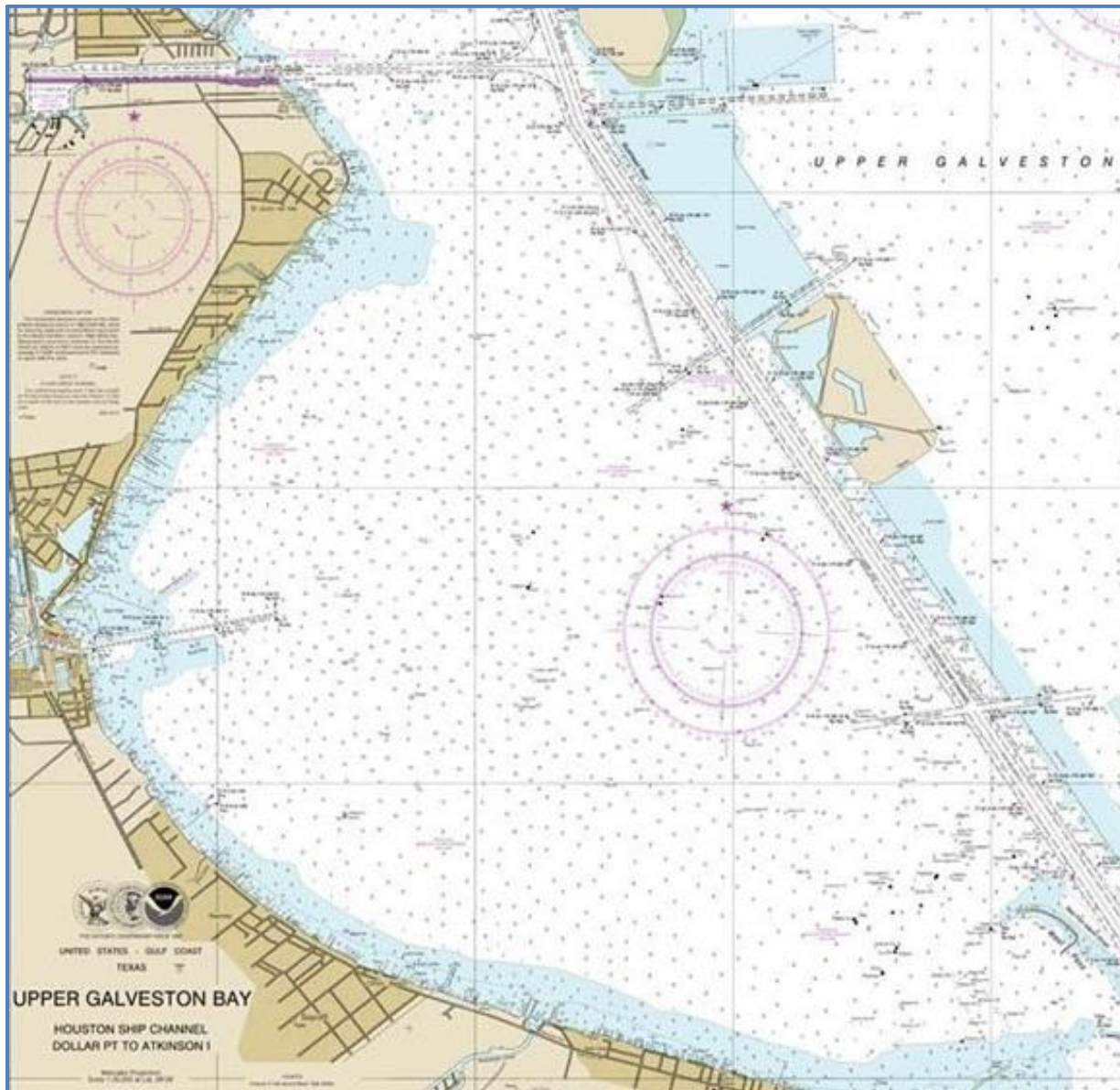




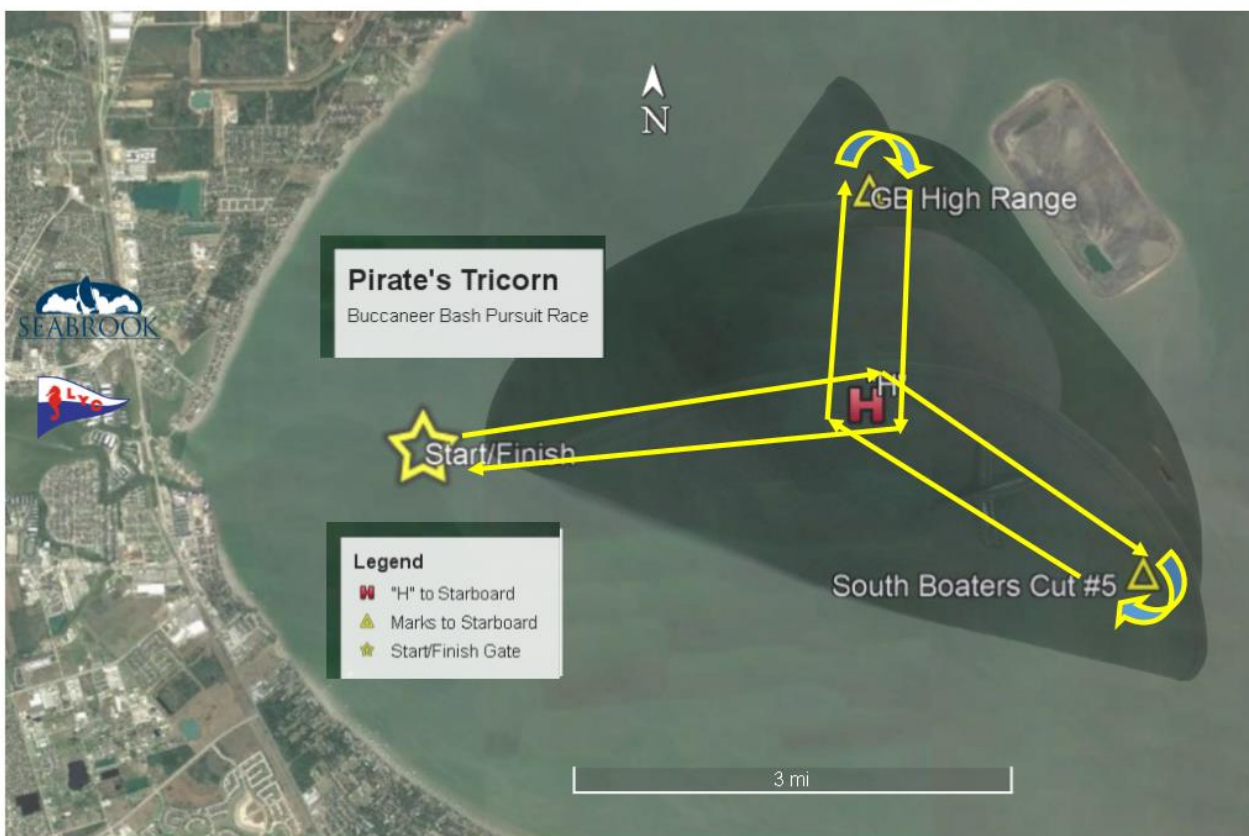
Attachment 3 Offshore Mark Photos

<p>TABS B</p> <p>https://www.ndbc.noaa.gov/station_page.php?station=42043</p>  <p>Flashing Yellow- 4 Second labeled "B"</p>	<p>TABS F</p> <p>https://www.ndbc.noaa.gov/station_page.php?station=42050</p>  <p>Flashing Yellow 4 Second labeled "F"</p> <p>Note: There is a Quick Flashing Red light ~1nm to WSW with a horn</p>
<p>GA 189 Mitchell's Reef Marker</p> <p>Photo not available</p> <p>Yellow Buoy with sign: "FR-TX-25"</p> <p>Flashing Yellow 6 seconds</p>	<p>High Island 179A KXIH</p> <p>Photo not available</p> <p>https://www.ndbc.noaa.gov/station_page.php?station=kxih</p>

Attachment 4 Bay Race Area



Attachment 5 Bay Race Course



Pirate's Tricorn Course – Round marks to Starboard

Mark	Location	Bearing(mag)	Round to	Distance (NM)
CC1/2	29 33.1113 N 094 59.5409 W			
H	29 33.2641 N 094 56.5516 W	084°	starboard	2.6091
SB5	29 32.4029 N 094 54.6544 W	115°	starboard	1.8627
H	29 33.2641 N 094 56.5516 W	295°	starboard	1.8627
F	29 34.6721 N 094 56.5202 W	359	starboard	1.4034
H	29 33.2641 N 094 56.5516 W	181°	starboard	1.4034
CC1/2	29 33.1113 N 094 59.5409 W	264	starboard	2.6091

Attachment 6 Bay Race Mark Photos



“F”



“H”

ATTACHMENT 7 Bay Race Start times

PHRF Rating	START TIME	PHRF Rating	START TIME	PHRF Rating	START TIME	PHRF Rating	START TIME
-60	14:52:34	-30	14:46:41	0	14:40:49	30	14:34:56
-59	14:52:22	-29	14:46:29	1	14:40:37	31	14:34:45
-58	14:52:10	-28	14:46:18	2	14:40:25	32	14:34:33
-57	14:51:58	-27	14:46:06	3	14:40:14	33	14:34:21
-56	14:51:47	-26	14:45:54	4	14:40:02	34	14:34:09
-55	14:51:35	-25	14:45:42	5	14:39:50	35	14:33:58
-54	14:51:23	-24	14:45:31	6	14:39:38	36	14:33:46
-53	14:51:11	-23	14:45:19	7	14:39:26	37	14:33:34
-52	14:51:00	-22	14:45:07	8	14:39:15	38	14:33:22
-51	14:50:48	-21	14:44:55	9	14:39:03	39	14:33:11
-50	14:50:36	-20	14:44:44	10	14:38:51	40	14:32:59
-49	14:50:25	-19	14:44:32	11	14:38:39	41	14:32:47
-48	14:50:13	-18	14:44:20	12	14:38:28	42	14:32:35
-47	14:50:01	-17	14:44:08	13	14:38:16	43	14:32:23
-46	14:49:49	-16	14:43:57	14	14:38:04	44	14:32:12
-45	14:49:37	-15	14:43:45	15	14:37:53	45	14:32:00
-44	14:49:26	-14	14:43:33	16	14:37:41	46	14:31:48
-43	14:49:14	-13	14:43:21	17	14:37:29	47	14:31:36
-42	14:49:02	-12	14:43:10	18	14:37:17	48	14:31:25
-41	14:48:51	-11	14:42:58	19	14:37:05	49	14:31:13
-40	14:48:39	-10	14:42:46	20	14:36:54	50	14:31:01
-39	14:48:27	-9	14:42:34	21	14:36:42	51	14:30:50
-38	14:48:15	-8	14:42:23	22	14:36:30	52	14:30:38
-37	14:48:04	-7	14:42:11	23	14:36:18	53	14:30:26
-36	14:47:52	-6	14:41:59	24	14:36:07	54	14:30:14
-35	14:47:40	-5	14:41:48	25	14:35:55	55	14:30:02
-34	14:47:28	-4	14:41:36	26	14:35:43	56	14:29:51
-33	14:47:16	-3	14:41:24	27	14:35:31	57	14:29:39
-32	14:47:05	-2	14:41:12	28	14:35:20	58	14:29:27
-31	14:46:53	-1	14:41:01	29	14:35:08	59	14:29:15

ATTACHMENT 7 Bay Race Start times

PHRF Rating	START TIME	PHRF Rating	START TIME	PHRF Rating	START TIME	PHRF Rating	START TIME
60	14:29:04	90	14:23:11	120	14:17:19	150	14:11:26
61	14:28:52	91	14:22:59	121	14:17:07	151	14:11:15
62	14:28:40	92	14:22:48	122	14:16:55	152	14:11:03
63	14:28:28	93	14:22:36	123	14:16:44	153	14:10:51
64	14:28:17	94	14:22:24	124	14:16:32	154	14:10:39
65	14:28:05	95	14:22:12	125	14:16:20	155	14:10:28
66	14:27:53	96	14:22:01	126	14:16:08	156	14:10:16
67	14:27:41	97	14:21:49	127	14:15:56	157	14:10:04
68	14:27:30	98	14:21:37	128	14:15:45	158	14:09:52
69	14:27:18	99	14:21:25	129	14:15:33	159	14:09:41
70	14:27:06	100	14:21:14	130	14:15:21	160	14:09:29
71	14:26:55	101	14:21:02	131	14:15:09	161	14:09:17
72	14:26:43	102	14:20:50	132	14:14:58	162	14:09:05
73	14:26:31	103	14:20:38	133	14:14:46	163	14:08:54
74	14:26:19	104	14:20:27	134	14:14:34	164	14:08:42
75	14:26:08	105	14:20:15	135	14:14:22	165	14:08:30
76	14:25:56	106	14:20:03	136	14:14:11	166	14:08:18
77	14:25:44	107	14:19:51	137	14:13:59	167	14:08:06
78	14:25:32	108	14:19:40	138	14:13:47	168	14:07:55
79	14:25:20	109	14:19:28	139	14:13:35	169	14:07:43
80	14:25:09	110	14:19:16	140	14:13:24	170	14:07:31
81	14:24:57	111	14:19:05	141	14:13:12	171	14:07:19
82	14:24:45	112	14:18:53	142	14:13:00	172	14:07:08
83	14:24:34	113	14:18:41	143	14:12:48	173	14:06:56
84	14:24:22	114	14:18:29	144	14:12:37	174	14:06:44
85	14:24:10	115	14:18:17	145	14:12:25	175	14:06:33
86	14:23:58	116	14:18:06	146	14:12:13	176	14:06:21
87	14:23:47	117	14:17:54	147	14:12:01	177	14:06:09
88	14:23:35	118	14:17:42	148	14:11:50	178	14:05:57
89	14:23:23	119	14:17:31	149	14:11:38	179	14:05:45

ATTACHMENT 7 Bay Race Start times

PHRF Rating	START TIME	PHRF Rating	START TIME	PHRF Rating	START TIME	PHRF Rating	START TIME
180	14:05:34	210	13:59:41	240	13:53:49	270	13:47:56
181	14:05:22	211	13:59:30	241	13:53:37	271	13:47:44
182	14:05:10	212	13:59:18	242	13:53:25	272	13:47:33
183	14:04:58	213	13:59:06	243	13:53:14	273	13:47:21
184	14:04:47	214	13:58:54	244	13:53:02	274	13:47:09
185	14:04:35	215	13:58:42	245	13:52:50	275	13:46:57
186	14:04:23	216	13:58:31	246	13:52:38	276	13:46:46
187	14:04:11	217	13:58:19	247	13:52:27	277	13:46:34
188	14:04:00	218	13:58:07	248	13:52:15	278	13:46:22
189	14:03:48	219	13:57:55	249	13:52:03	279	13:46:11
190	14:03:36	220	13:57:44	250	13:51:51	280	13:45:59
191	14:03:25	221	13:57:32	251	13:51:39	281	13:45:47
192	14:03:13	222	13:57:20	252	13:51:28	282	13:45:35
193	14:03:01	223	13:57:08	253	13:51:16	283	13:45:24
194	14:02:49	224	13:56:57	254	13:51:04	284	13:45:12
195	14:02:38	225	13:56:45	255	13:50:52	285	13:45:00
196	14:02:26	226	13:56:33	256	13:50:41	286	13:44:48
197	14:02:14	227	13:56:21	257	13:50:29	287	13:44:36
198	14:02:02	228	13:56:10	258	13:50:17	288	13:44:25
199	14:01:51	229	13:55:58	259	13:50:05	289	13:44:13
200	14:01:39	230	13:55:46	260	13:49:54	290	13:44:01
201	14:01:27	231	13:55:34	261	13:49:42	291	13:43:49
202	14:01:15	232	13:55:23	262	13:49:30	292	13:43:38
203	14:01:03	233	13:55:11	263	13:49:18	293	13:43:26
204	14:00:52	234	13:54:59	264	13:49:07	294	13:43:14
205	14:00:40	235	13:54:48	265	13:48:55	295	13:43:02
206	14:00:28	236	13:54:36	266	13:48:43	296	13:42:51
207	14:00:16	237	13:54:24	267	13:48:31	297	13:42:39
208	14:00:05	238	13:54:12	268	13:48:20	298	13:42:27
209	13:59:53	239	13:54:00	269	13:48:08	299	13:42:15