



Ventura Yacht Club
1755 Spinnaker Drive, Ventura CA 93001
1-805-642-0426, Fax 1-805-642-0494



Sailing Instructions 2019 Commodore Classic

- 1. Rules:** Except for brief breaks not to exceed five minutes in duration, a Staff, Rear, Vice, or Commodore must be at the helm at all times. These breaks may not occur during the starting sequence or within five minutes of rounding a mark or finishing, nor at any time in which a tactical advantage would be gained
 - 1.1. The regatta will be governed by the rules as defined in The Racing Rules of Sailing
 - 1.2. PHRF Area A Random Leg handicaps will be used.
 - 1.3. Boats may request a rating adjustment for this race by submitting a Commodore Classic Rating Adjustment Form showing the cruising inventory carried onboard (online form).
 - 1.4. Boats not carrying a spinnaker will be credited with their PHRF Non-Spinnaker Offset as an additional adjustment to their handicap for the race. Boats must declare "Non-Spinnaker" at the skipper's meeting to be scored with their Non-Spinnaker Offset.
 - 1.5. Only one Main and one Headsail may be used off wind if the Non Spin offset is used.
 - 1.6. This event is rated as a Nearshore Event. Entrants are required to comply with the US Sailing SER. The following prescriptions of the USS SER have been modified for this event.
 - 1.6.1. USS SER 2.4.4 is in effect and modified to require lifelines even if they are not uncoated Stainless Steel.
 - 1.6.2. USS SER 3.19.1 is modified to allow compasses such as the TACK TICK and Velocitek Shift (non GPS) magnetic compasses with mounted brackets as long as they are tethered so the device may not be lost overboard.
 - 1.6.3. USS SER Rule 3.8.2 is modified to allow a handheld waterproof VHF or a handheld VHF with a waterproof cover. DSC/GPS capability is not required.
 - 1.6.4. USS SER 3.3.1 is modified to allow running lights that are mounted below deck level (90's and earlier boats).
- 2. Notice to Competitors and Changes to the SI**
 - 2.1. Notices will be posted on the Bulletin Board located inside the downstairs patio.
 - 2.2. Any changes to the SI will be posted by 0930 on the day it takes effect. Oral instructions from the RC on station will be displayed using Code Flag L on the RC boat.
- 3. Signals made ashore**
 - 3.1. Signals will be hoisted on the VYC Main flag pole or to one of the side arms accompanied by an audible signal.
- 4. Schedule of Races**
 - 4.1. The warning signal for the race is scheduled for 1155 hours on June 2, 2019
- 5. Class Flags**
 - 5.1. Class Flags will be assigned at the Skippers Meeting.
- 6. Race Area**
 - 6.1. The course will be selected from the Course chart attached at the end of the SI.
 - 6.2. Racers are requested to check in as soon as the RC signals that they are on station by sailing past and hailing or by using VHF channel 69.
- 7. The Start**
 - 7.1. Races shall be started using **RRS 26**.

- 7.2. Starting line S will be between the Ventura Harbor entrance whistle buoy "R2" as the port-side mark and an orange flag or shape mounted on the Committee Boat as the starboard-side mark.
- 7.3. As a courtesy, the RC will sound a series of horns 1 minute before the start sequence.
- 7.4. The RC will use VHF Channel 69.
- 7.5. Recalls

- 7.5.1. The RC is not responsible for hailing boats OCS. The RC shall as a courtesy attempt to hail boats that are OCS.

8. Finish Line

- 8.1. The finish shall be on a line from the VYC clubhouse balcony to the green light standard (#3) near the southwest end of the detached Ventura Harbor breakwater.
- 8.2. As you approach the finish, it is requested that you notify the RC on Channel 69 of your approach.
- 8.3. Shortly after finishing, it is requested that spinnakers be struck in order to maintain safe maneuverability and legal speed in the harbor.
- 8.4. If foggy, please radio the RC when your bow crosses the finish line
- 8.5.

9. Penalty System

- 9.1. The 2 turn Penalty **RRS 44.2** applies.

10. Time Limit

- 10.1. If no boat finishes before 5pm, the race is abandoned. This modifies RRS A5.

11. Protest and Requests for Redress

- 11.1. Protest shall be filed on a form available at VYC or online.
- 11.2. Protest shall be filed with the RC within 1 hour of the RC Boat docking.
- 11.3. These items are not grounds for granting redress.
 - 11.3.1. Failure of a boat to hear a recall hail or broadcast.
 - 11.3.2. A boat's position in the sequence of the recall hail or broadcast.
 - 11.3.3. Failure of the RC to hail or broadcast a recalled boat's number.

12. Scoring

- 12.1. RRS Low Point Scoring, Appendix A, will apply.

13. Safety Regulations

- 13.1. All Owners, Skippers or Charters shall be responsible for following all US Coast Guard safety regulations and the Safety Equipment Requirements of the National Authority or Class Association unless otherwise modified in these Instructions.
- 13.2. A boat that retires prior to the finish of the day's racing and does not intend to continue, shall radio the RC on VHF Channel 69 or call the VYC Office at 1-805-642-0426
- 13.3. A minimum of 2 people on board is required to race.
- 13.4. Each participating boat will have 3rd party insurance. Documentation must be provided upon request.

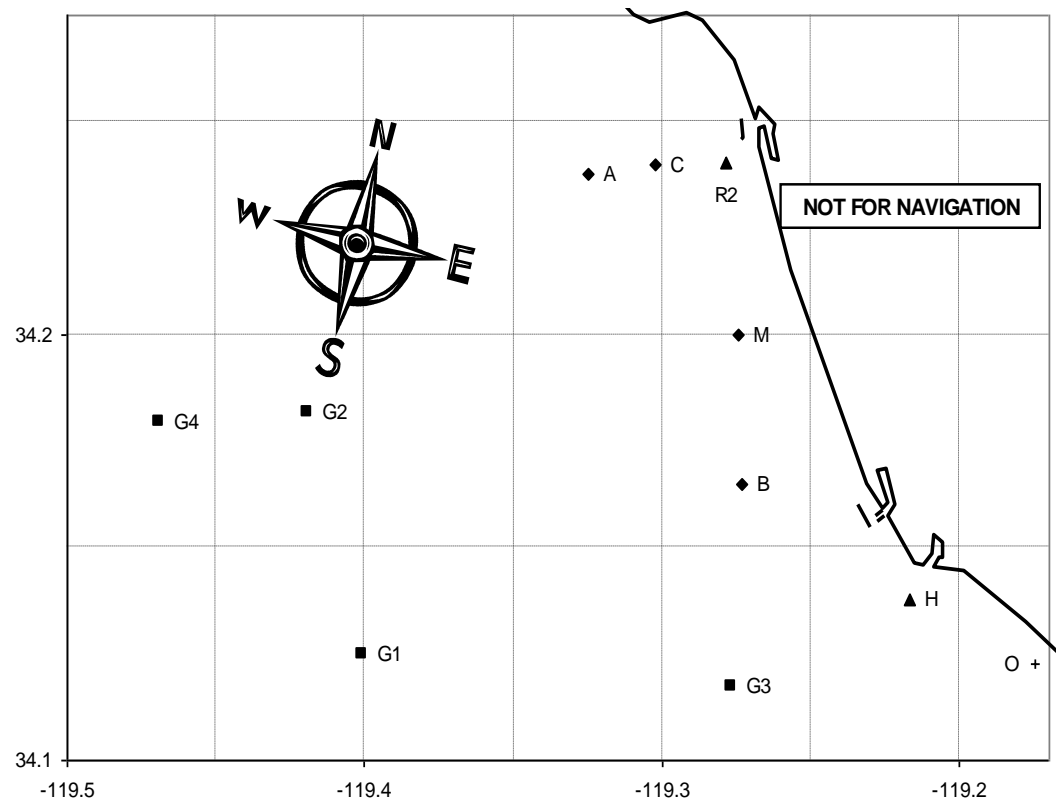
14. Post-Race and Trophies

- 14.1. Trophies will be awarded at the end of the day's racing
- 14.2. Refreshments are available at VYC afterwards. All Skippers, crew and guests are welcome.

Questions? Contact PRO Pam Phillips at (805) 985-3005 or email phillips2280@roadrunner.com.

2019 Commodore Classic Course Chart

#	Course	Appx Heading To First Mark	Approx. Length
1	S Bs As F	165	12.84
2	S Mp R2s F	161	5.4
3	S Ms As F	161	9.14
4	S Ms G2s F	161	18.37
5	S G3s R2s F	180	15.28
6	S G1s R2s F	220	19.18
7	S G2s F	245	16.46
8	S Ap F	257	5.49
9	S Ap Cp Ap F	257	8.72
10	S Ap R2p Cp F	257	7.55
11	S Ap Mp R2s F	257	9.25
12	S Ap R2p Cp R2p Cp F	257	9.55
13	S Ap Bp R2s F	257	12.95
14	S Ap Mp R2p Ap F	257	14.28
15	S Ap Bp R2p Ap F	257	17.98
16	S Cp F	252	2.37
17	S Cp R2p Cp F	252	4.37
18	S Cp R2p Cp R2p Cp F	252	6.37
19	S Ap Mp R2p Cp F	257	11.18
20	S Cp Mp R2p Cp F	252	8.75
21	S Cp Mp R2s F	252	6.8



MARKS		APPROXIMATE LOCATION	
A	Fish Sticks spar buoy	L: 34° 14.5'N	Lo: 119° 19.9W
B	“Wes” Mark	L: 34° 09.9'N	Lo: 119° 16.5W
C	Chips spar buoy	L: 34° 14.4'N	Lo: 119° 17.9'W
H	Hue Whistle buoy RW”PH”	L: 34° 08.3'N	Lo: 119° 13.0'W
M	Mandalay spar buoy	L: 34° 12.0'N	Lo: 119° 16.5'W
O	Ormond Buoy	L: 34° 7.4'N	Lo: 119° 10.5'W
R2	Vta Whistle buoy R"2V"	L: 34° 14.4'N	Lo: 119° 16.7'W
G1	Platform Gail	L: 34° 07.5'N	Lo: 119° 24.1'W
G2	Platform Gilda	L: 34° 10.9'N	Lo: 119° 25.2'W
G3	Platform Gina	L: 34° 07.0'N	Lo: 119° 16.6'W
G4	Platform Grace	L: 34° 10.8'N	Lo: 119° 28.1'W