



Ms. Race Course 1 7.0 NM

SF → JF (0.5 NM, 213°)

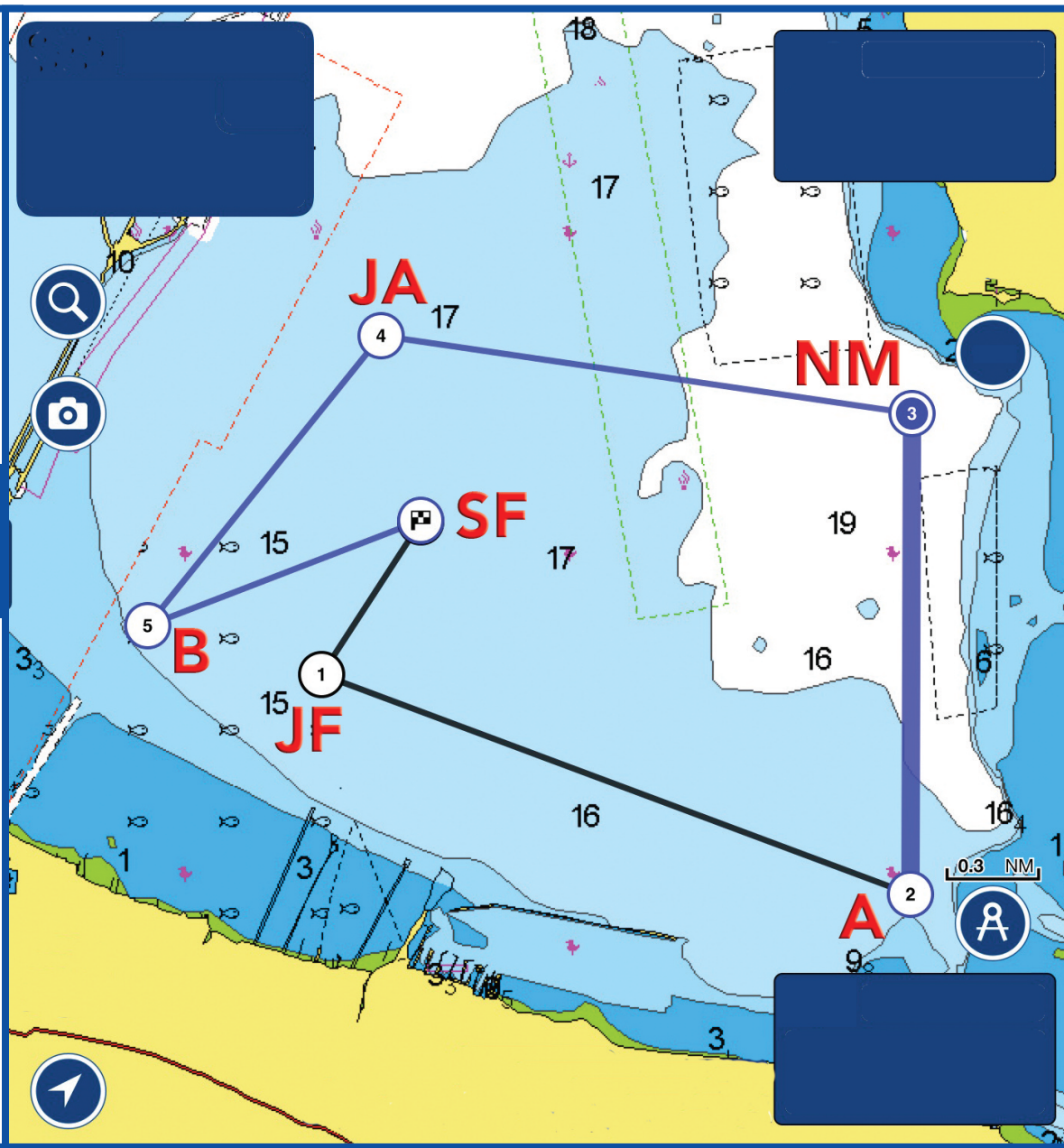
JF → A (1.8 NM, 110°)

A → NM (1.3 NM, 0°)

NM → JA (1.5 NM, 278°)

JA → B (1.0 NM, 219°)

B → SF (0.8 NM, 69°)



This chart is for illustrative purposes only and not to be used for navigation. Always consult local government navigation charts. Consult the AHYC 2018 Race booklet for mark locations.



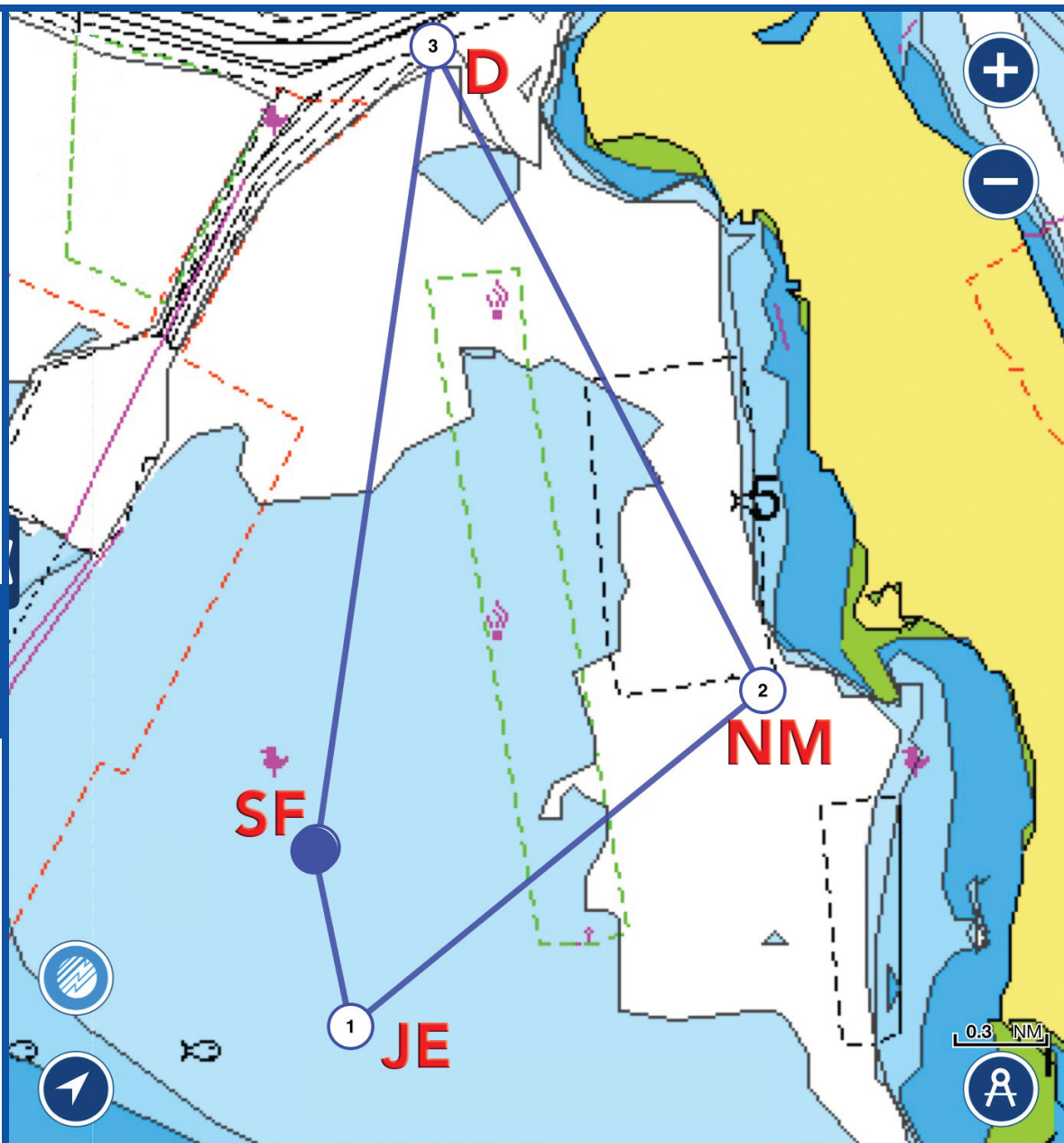
Ms. Race Course 2 6.3 NM

SF → JE (0.5 NM, 168°)

JE → NM (1.5 NM, 51°)

NM → D (2.0 NM, 333°)

D → SF (2.3 NM, 188°)



This chart is for illustrative purposes only and not to be used for navigation. Always consult local government navigation charts. Consult the AHYC 2018 Race booklet for mark locations.



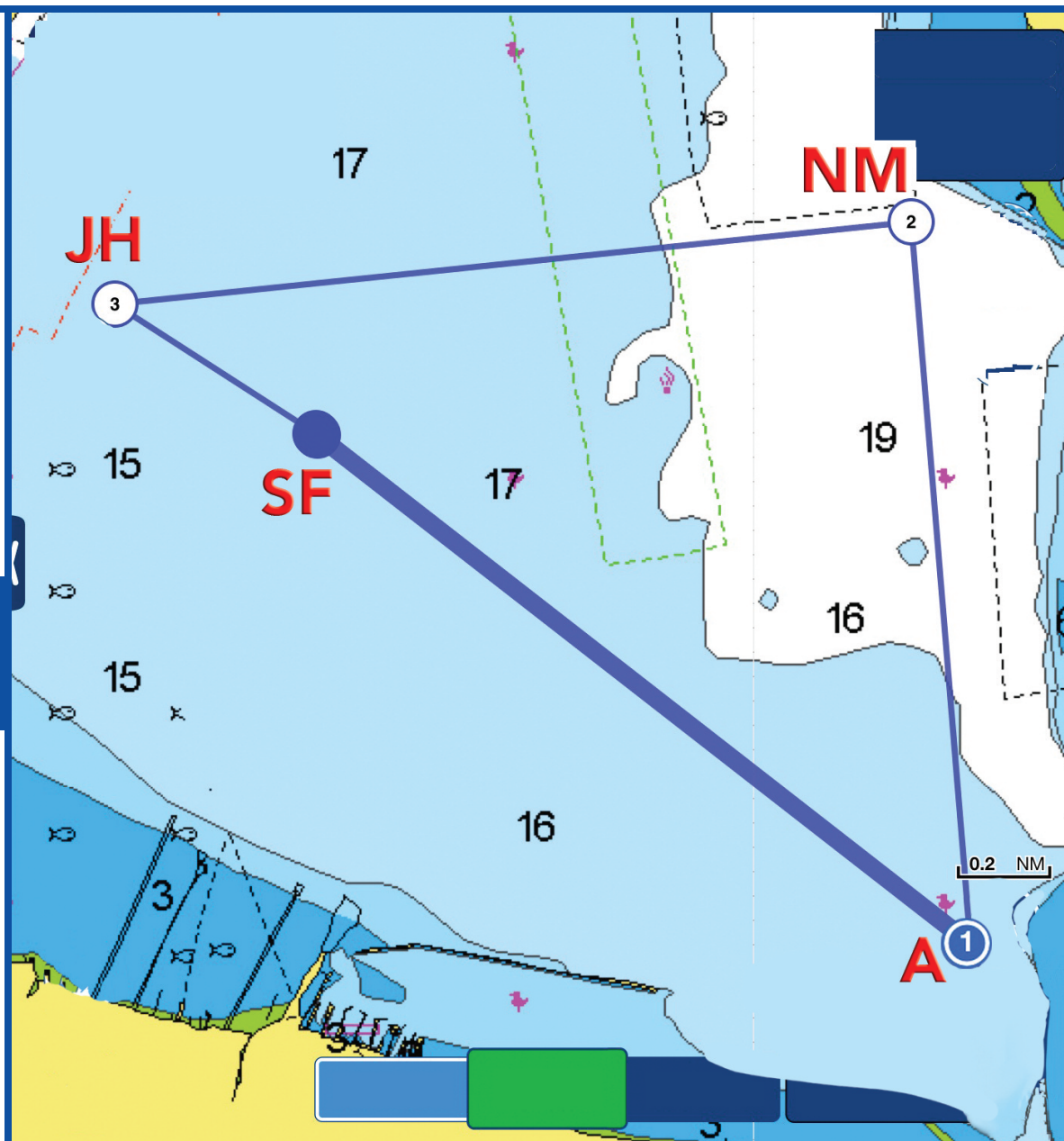
Ms. Race Course 3 5.45 NM

SF → A (1.74 NM, 142°)

A → NM (1.56 NM, 9°)

NM → JH (1.65 NM, 270°)

JH → SF (0.5 NM, 135°)



This chart is for illustrative purposes only and not to be used for navigation. Always consult local government navigation charts. Consult the AHYC 2018 Race booklet for mark locations.