

SAILING INSTRUCTIONS

80th Annual One Design Regatta
August 10-11, 2019
Fishing Bay Yacht Club
Deltaville, Virginia

1. RULES

- 1.1. The regatta will be governed by the rules as defined in The Racing Rules of Sailing (RRS), and current applicable class rules.
- 1.2. If there are any discrepancies between the Notice of Race and the Sailing Instructions, the Sailing Instructions take precedent.
- 1.3. Competitors in the Portsmouth class must fly a red streamer at the aft end of the vessel's boom. (Streamer will be provided at check-in)

2. NOTICES TO COMPETITORS

- 2.1. Notices to competitors will be posted online on Regatta Network. The link is:
https://www.regattanetwork.com/clubmgmt/applet_notice_board.php?regatta_id=19281
- 2.2. Any change to the sailing instructions will be posted before 0830 on the day it is to take effect, except that any change to the schedule of races will be posted by 1900 on the day before the change will take effect.

3. SIGNALS MADE ASHORE

- 3.1. Signals made ashore will be displayed on the flagpole on the Fishing Bay Dock.
- 3.2. When flag AP is displayed ashore, '1 minute' is replaced with 'no less than 45 minutes in the race signal AP.'
- 3.3. Signals made ashore shall be for all classes and courses for the regatta.

4. CHANGES TO INSTRUCTION ON THE WATER

- 4.1. If additional changes/instructions are needed to be conveyed to competitors on the water prior to the start, code flag 'Y' will be hoisted while RC is anchored. Competitors are requested to tune to the VHF channel assigned to their course in Appendix C, and/or sail by the signal boat for verbal instructions.

5. SCHEDULE

Friday, August 9, 2019

Late Registration & Check in 1700–2000

Buffet Dinner 1800

Saturday, August 10, 2019

Continental Breakfast 0800

Check-In 0800 - 0925

Skippers Meeting 0930

First Warning Signal 1100

Followed by subsequent races

Post-Race Bar 1700

Sunday, August 11, 2019

Continental Breakfast 0800

First Warning Signal 1000

Followed by subsequent races

No races shall be started after 1400 on Sunday.

Code Flag "A" displayed as boats are finishing means "No more racing today on this course."

6. CLASS FLAGS

- 6.1. Class flags, assigned race areas and intended start orders will be listed in Appendix C

7. RACING AREAS

- 7.1. Appendix B shows the approximate location of racing areas.
- 7.2. Class assignments to racing areas will be listed in Appendix C
- 7.3. Boats may be led to another racing area by hosting code flag 'L'.

8. THE COURSES

- 8.1. Sample course diagrams shown in Appendix A shows the order in which marks are to be rounded or passed and the side on which each mark is to be left.
- 8.2. The course for each class will be displayed on the Race Committee Signal Boat.

9. MARKS

- 9.1. Initial marks for all classes will be orange inflatable marks.
- 9.2. New marks, as provided in Rule 33, will be yellow inflatable marks.
 - 9.2.1. If the course is changed after the start, only one change mark will be set. All boats shall round this single change mark.
 - 9.2.2. i.e. If course has a long and a short weather mark, all boats will round the single change mark.
- 9.3. The starting and finishing marks will be orange inflatable marks.

10. THE START

- 10.1. Races will be started by using Rule 26 with the warning signal made 5-minutes before the starting signal for all classes except Optimist Green.
- 10.2. Optimist Green races will be started using the RRS Appendix S - Sound Signal Starting System.
- 10.3. The starting line will be between an orange flag on the committee boat at the starboard end and an orange mark on the port end(looking upwind). Boats whose warning signal has not been made shall avoid the starting area during the starting sequence for other races.Boats failing to keep clear of this area will be subject to protest by the Race Committee only.
- 10.4. A boat starting later than 4-minutes after her starting signal will be scored Did Not Start (DNS) without a hearing. This changes Rule A4.
- 10.5. Race committee will attempt to hail OCS boats by sail number on individual recalls. Failure of the Race Committee to make this hail, failure of a boat to hear the hail, her position in the sequence of notifications or promptness of notification will not be valid grounds for redress. This modifies Rule 29.1.
- 10.6. Attempt to notify OCS boats will be using VHF channel designated in Appendix C

11. THE FINISH

- 11.1. The leeward finishing line will be between a staff displaying an orange flag on a Race Committee boat and the course side of an orange inflatable finishing mark, opposite the starting line.
- 11.2. For a windward finish, the finishing line will be between a staff displaying an orange flag on a Race Committee boat and the course side of the farthest weather mark.

12. TIME LIMITS

- 12.1. The time limit for the first class boat to finish will be 90-minutes.
- 12.2. Boats failing to finish within 30-minutes after the first boat in class finishes will be scored TLE and given points 1 greater than the number of boats finishing the race. This changes Rules 35, A4.2 and A5.

13. PROTESTS AND REQUESTS FOR REDRESS

- 13.1. Protest forms are available at the race office inside the first floor of the FBYC Main Clubhouse.
- 13.2. The protest time limit will begin when the Race Committee signal boat for each course docks and ends one-hour later. The protest time limit for each course will be posted on the Regatta Notice Board.
- 13.3. A notice of protests filed and approximate hearing times will be posted on the Regatta Notice Board within 20-minutes after the expiration of the Protest Time Limit. This posting shall constitute the notice required for Race Committee or Protest Committee protests required under Rule 61.1(b).

14. SCORING

- 14.1. The Low-Point Scoring System RRS A4 will apply except that each skipper's total score will be the sum of his/her scores for all races (no throw outs). This changes RRS A2.
- 14.2. US Sailing Appendix T1 (Post Race Penalties) is in effect.
- 14.3. Alternative Penalty Acknowledgement Forms will be available at the Race Office desk.
- 14.4. Classes racing under the Portsmouth Handicap will be scored as a fleet and not with their respective class.
- 14.5. One completed race constitutes a regatta.

15. SAFETY

- 15.1. A yacht requesting assistance should attempt to signal by repeatedly waiving an extended arm. A yacht may also contact the Race Committee on VHF Channel designated for their course in Appendix C.
- 15.2. Each boat should carry a tow line of appropriate diameter and length for the class of boat.
- 15.3. Boats disabled or unable to return to the dock under their own sail may be towed to a non race mark, clear of the racing area, and will be asked to tie off/anchor there until a break in the racing permits a safety or Race Committee boat to tow the disabled vessel to dock.

16. AWARDS

- 16.1. The John R. Hawksworth Memorial Trophy will be awarded to the class winner who has been most competitive as measured both by the degree to which he/she has consistently been at the top of his/her class and the number of boats against which he/she has competed.
- 16.2. Awards shall be given as follows:
 - Flying Scots 1-3
 - San Juan 21 1-3
 - Laser 1-3
 - Typhoon 1-3

- Any other class(es) with 5 boats registered by close of business Aug 1st, 2019. 1-3

17. DISCLAIMER OF LIABILITY

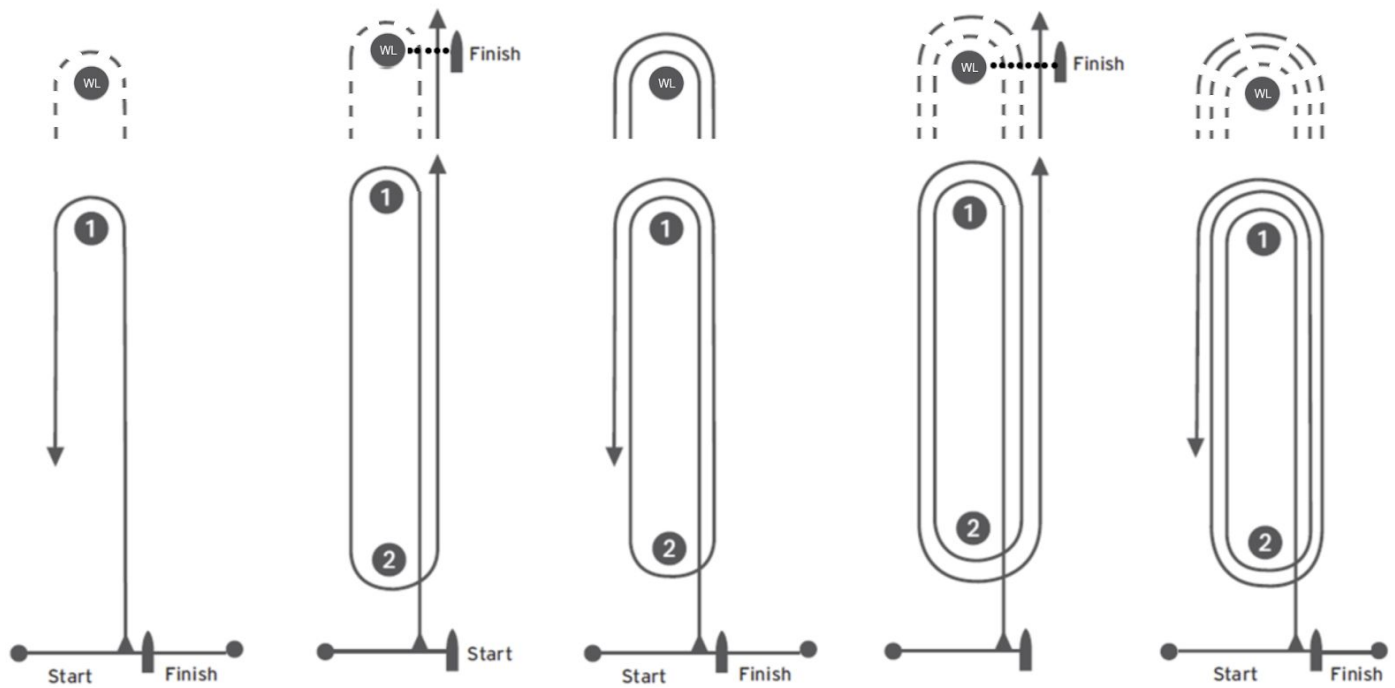
- 17.1. Competitors participate in the regatta entirely at their own risk. See Rule 4, Decision to Race. The organizing authority will not accept any liability for material damage or personal injury or death sustained in conjunction with or prior to, during or after the regatta.

Special Thanks to our regatta sponsor!



Appendix A

All marks are to be rounded to port. There may be two windward marks used. For all courses with a leeward finish, the leeward mark has no significance on the last leg of the course. For windward finishes the finish line will be located between the longest weather mark and an RC boat displaying an orange finish flag. Additionally, for windward finishes when a long weather mark (WL) is in use, the short weather mark has no significance on the finish leg.



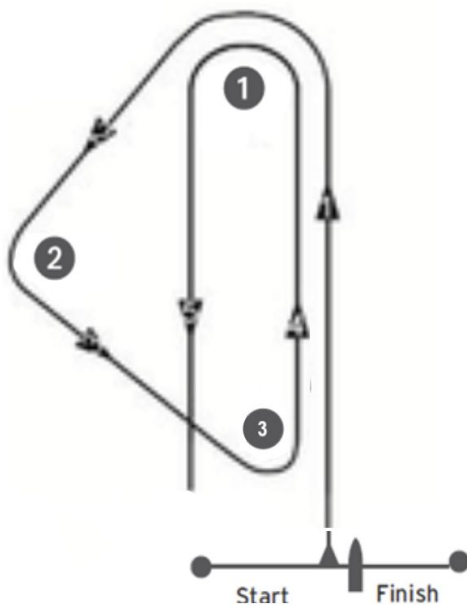
'W2' & 'WL2'

'W3' & 'WL3'

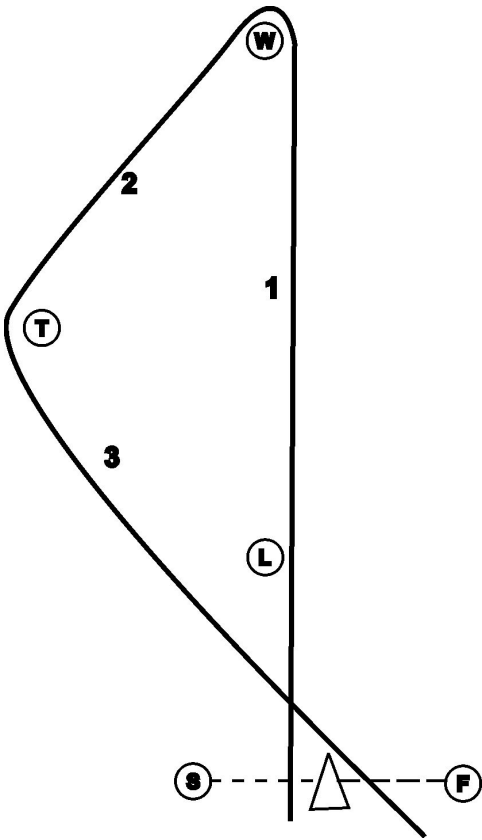
'W4' & 'WL4'

'W5' & 'WL5'

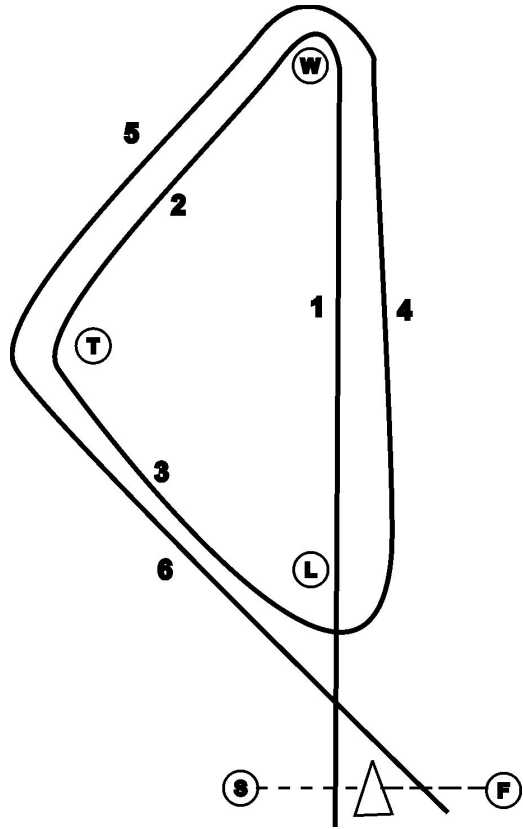
'W6' & 'WL6'



'G'(Start,1,2,3,1, Finish)

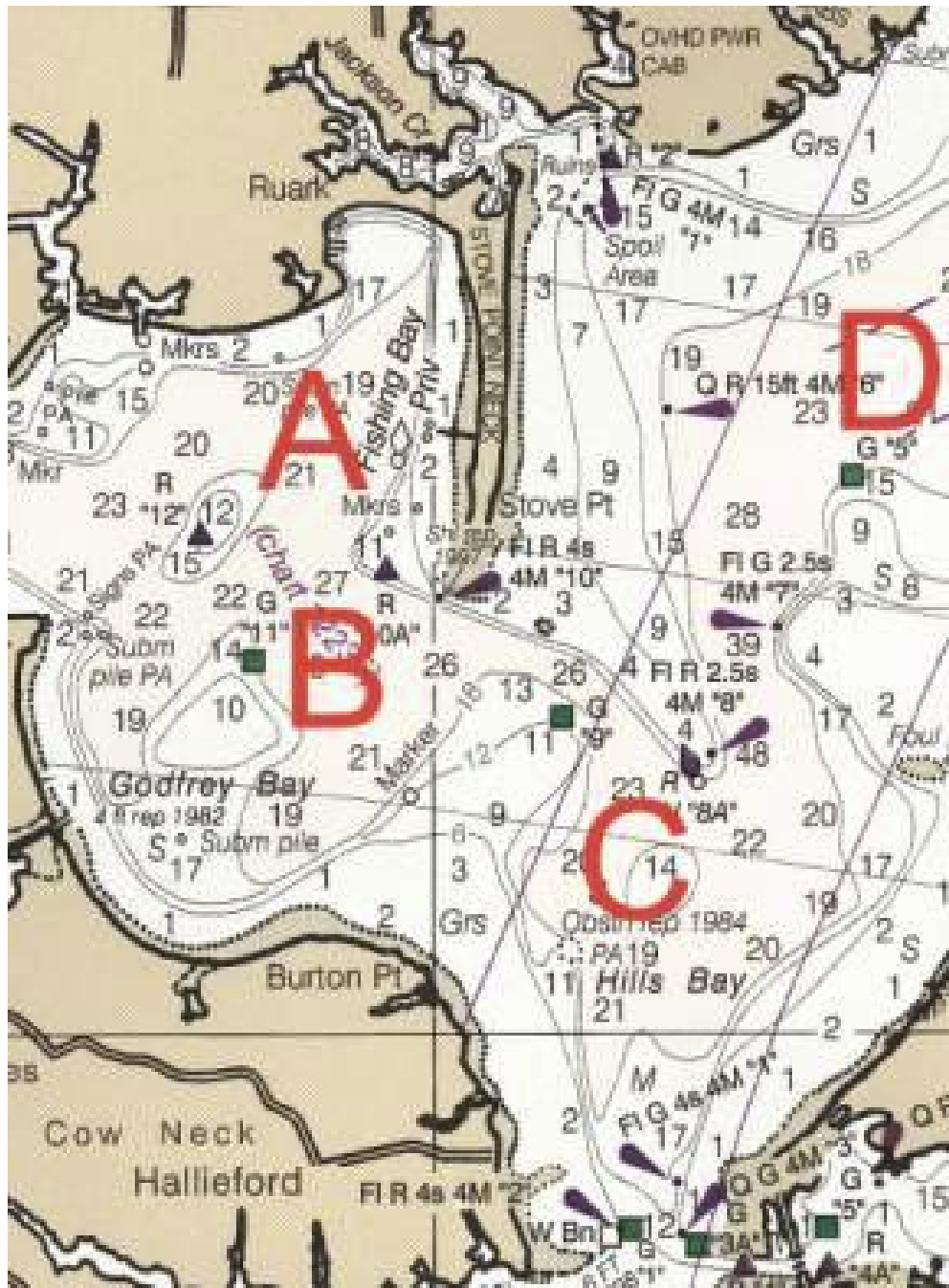


'T' (Start, W, T, Finish)
 If 'TL' long windward mark
 will be used



'T2' (Start, W, T, L, W, T, Finish)
 If 'T2L' long windward mark
 will be used.

APPENDIX B



Appendix C

Expected Start Order	Class	Flag	Course Area	VHF Channel
1	Flying Scot	<p>Flag with Flying Scot logo</p> 	D	69
2	Hampton OD and Portsmouth	<p>Flag with Hampton One Design Logo</p> 	D	69
1	Laser	<p>Flag with Laser Class Logo</p> 	B	72
2	San Juan	<p>Flag with San Juan Log</p> 	B	72
3	Typhoon	<p>Flag with Typhoon Logo</p> <p>Ty</p>	B	72