



August 3, 2019

**Presented by: Lakewood Yacht Club
Organizing Authority: Bay Access
Seabrook, Texas**

**Sailing Instructions
Published July 31, 2019 at 2100**

The notation '[DP]' in a rule in the SI means that the penalty for a breach of that rule may, at the discretion of the protest committee, be less than disqualification.

1. RULES

1.1. The regatta will be governed by the rules as defined in *The Racing Rules of Sailing*.

1.2. The following prescription of US Sailing will not apply: 63.2.

1.3. n/a

1.4. Racing rule(s) 35, 44.1, 52, 62.1, 62.2, 64.1, A2, A4, and A5 will be changed as follows:

1.4.1. The penalty for violating RRS 31 by touching an anchored race committee vessel shall be to retire, and no exoneration is available. This changes RRS 44.1 and 64.1(a).



- 1.4.2. The penalty for violating a rule of Part 2 with the result that another boat touches an anchored race committee vessel shall be for the offending boat to retire. This changes RRS 44.1 and 64.1(a).
- 1.4.3. For purposes of SI 1.4.1 and 1.4.2, touching a float and its line trailing from an anchored race committee vessel will not be treated as touching an anchored race committee vessel.
- 1.4.4. Boats in the Classic Canvas class may use power driven winches. This changes RRS 52.
- 1.4.5. A boat that does not start within 10 minutes after her starting signal may be scored Did Not Start without a hearing. This changes RRS A4 and A5.
- 1.4.6. Boats failing to finish by the time limit will be scored Did Not Finish without a hearing. This changes RRS 35, A4 and A5. Failure to meet the time limit will not be grounds for redress. This changes RRS 62.1(a).
- 1.4.7. If the race committee posts a list of boats scored OCS, ZFP, UFD or BFD on the official notice board before the protest time limit, a request for redress based on such a posted score shall be made no later than one hour after the protest time limit. This changes RRS 62.2.
- 1.4.8. In addition to the requirements of RRS 61.1(a), a boat intending to protest another boat or to request redress shall notify the race committee as soon as possible either a) by radio using the appropriate VHF channel; or b) by sailing past the race committee signal vessel and hailing their intent. The protesting boat shall identify the other boat and receive acknowledgment from the race committee. This changes RRS 62.1.
- 1.4.9. No score will be excluded. This changes RRS Appendix A2.
- 1.5. n/a
- 1.6. n/a
- 1.7. Additional Rules
 - 1.7.1. Boats in the Classic Canvas Class may only use sails made of woven polyester such as Dacron.
 - 1.7.3. Two headsails shall not be carried at the same time, except while changing headsails, the replacing sail may be set and trimmed before the replaced sail is lowered.
 - 1.7.4. A pole may be used to wing out a headsail, the luff of which shall be attached to a headstay. A whisker pole or spinnaker pole shall not be used to wing out an asymmetrical spinnaker.

2. NOTICES TO COMPETITORS

Notices to competitors will be posted on the official notice board located near the west end of the pool at Lakewood Yacht Club.



3. CHANGES TO SAILING INSTRUCTIONS

- 3.1. Any change to the sailing instructions will be posted before 0830 hours on the day it will take effect, except that any change to the schedule of races will be posted by 2100 on the day before it will take effect.
- 3.2. Oral changes to the sailing instructions may be given on the water by hail on the appropriate VHF channel in accordance with RRS 90.2(c).

4. SIGNALS MADE ASHORE

- 4.1. Signals made ashore will be displayed on the yardarm at Lakewood Yacht Club near the main clubhouse.
- 4.2. When flag AP is displayed ashore, '1 minute' is replaced with 'not less than 60 minutes' in the race signal AP. This changes RRS Race Signals.

5. SCHEDULE OF RACES

- 5.1. Date of racing: August 3, 2019.
- 5.2. Number of races: One or two races will be held.
- 5.3. The scheduled time of the warning signal for the first race is 1030.
- 5.4. n/a
- 5.5. No warning signal will be made after 1400.
- 5.6. Flag A displayed, with no sound, while boats are finishing means 'No more racing today.'

6. CLASS FLAGS

Class flags will be:

<u>Class</u>	<u>Flag</u>
Cruising Non-Spin Classic Canvas	Yellow
PHRF Non-Spin	Green
PHRF Spin Non-Sprit	Pink
PHRF Spin Sprit	Purple

7. RACING AREAS

- 7.1. Attachment A shows the location of the racing areas.

8. THE COURSES

- 8.1. The diagrams in Attachment A show the courses, including the approximate angles between the legs, the order in which marks are to be passed, and the side on which each mark is to be left.
- 8.2. No later than the warning signal, the race committee signal vessel will display a numeral pennant for the course to be sailed for that start. The Race Committee may, at its discretion, set different courses for different classes.
- 8.3. n/a



8.4. n/a

9. MARKS

9.1. Marks for Courses will be fixed and dropped marks on Galveston Bay in the following approximate positions:

Mark	Approximate	Description
Start/Finish	N 29° 32.7' W 094° 59.1'	RC Signal boat and a nearby orange buoy
E	N 29° 35.8' W 094° 56.9'	The Low Range Marker (Upper Range "A") in Galveston Bay. The mark is an orange and white structure near Houston Ship Channel Marker #73, 0.23 nm NNW of the old low range.
H	N 29° 33.3' W 094° 56.5'	A platform located in Galveston bay, approximately 1.3 nm WSW of the Houston Ship Channel marker #65.
South Boat Cut (SBC) 8	N 29° 32.4' W 094° 55.1'	A channel marker in Galveston bay, near the Houston Ship Channel marker 61
Todville Rd beach Tet	N 29° 34.5' W 094° 59.3'	An anchored 8' Orange Tetrahedron
San Leon beach Tet	N 29° 30.6' W 094° 56.1'	An anchored 8' Orange Tetrahedron
Upper Galveston Bay Tet	N 29° 39.2' W 094° 59.8'	An anchored 8' Orange Tetrahedron

9.2. n/a

9.3. The starting and finishing marks will be the race committee signal vessel and an orange buoy.

10. AREAS THAT ARE OBSTRUCTIONS

The following areas are designate as obstructions:

- 10.1. The Houston Ship Channel. It may not be entered or crossed while racing.
- 10.2. Boats shall not at any time interfere with commercial vessels operating in the Houston Ship Channel or Bayport Channel.

11. THE START

- 11.1. n/a.
- 11.2. The starting line will be between a staff displaying an orange flag on the starting mark at the starboard end and the course side of the port-end starting mark.
- 11.3. Boats whose warning signal has not been made shall avoid the starting area during the starting sequence for other races. [DP]



12. CHANGE OF THE NEXT LEG OF THE COURSE

To change the next leg of the course, the race committee will move the original mark (or the finishing line) to a new position.

13. THE FINISH

13.1. The finishing line will be between a staff displaying a blue flag on the finishing mark at the starboard end and the course side of the port-end finishing mark.

13.2. If the race committee is absent when a boat finishes, she should report her finishing time, and her position in relation to nearby boats, to the race committee at the first reasonable opportunity.

14. PENALTY SYSTEM

Appendix V will apply.

15. TIME LIMITS and TARGET TIMES

15.1. The time limit for boats to finish is 1530.

16. PROTESTS and REQUESTS for REDRESS

16.1. US Sailing prescriptions to RRS 63.2 shall not apply.

16.2. Protest forms are available in the LYC Clubhouse Office. Protests and requests for redress or reopening shall be delivered there within the appropriate time limit. Protestors and Protestees are requested to promptly go to the LYC Clubhouse Office to either wait for resolution or leave a reliable contact number.

16.3. For each class, the protest time limit is 60 minutes after the race committee signal vessel returns to the Lakewood Inner Harbor.

16.4. Notices will be posted no later than 30 minutes after the protest time limit to inform competitors of hearings in which they are parties or named as witnesses. Hearings will be held in the protest room, the location of which will be identified on the official notice board, beginning at the time posted.

16.5. Notices of protests by the race committee, technical committee or protest committee will be posted to inform boats under RRS 61.1(b).

16.6. See SI 1.4.7 and 1.4.8.

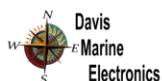
17. SCORING

17.1. See SI 1.4.9.

17.2. One race is required to be completed to constitute a series.

17.3. All handicap classes will be scored using Time on Distance (TOD) scoring.

17.4. To qualify for a series trophy, a boat must compete in the same class during both the 2019 Bay Cup I and Bay Cup II regattas and must be sailed by the same skipper.



18. SAFETY REGULATIONS

- 18.1. Before the first warning signal of the first race, a boat shall check in with the race committee on the water by sailing past the stern of the anchored race committee signal vessel on starboard tack and hailing the boat’s name or sail number, until acknowledged by the race committee. Boats shall not check in by VHF radio. [DP]
- 18.2. Failure to check in is not subject to protest by another boat.
- 18.3. At each boat’s check-in, every person on board shall be visible on deck wearing or holding a personal floatation device (PFD).
- 18.4. A boat that retires from a race shall notify the race committee as soon as possible by one or more of the following means: a) by radio using VHF channel 69; b) by calling the LYC Office (281) 474-2511; c) by sailing past a race committee vessel and announcing withdrawal and receiving acknowledgment.

19. REPLACEMENT of CREW or EQUIPMENT

n/a

20. EQUIPMENT and MEASUREMENT CHECKS

n/a

21. EVENT ADVERTISING

n/a

22. OFFICIAL BOATS

Official vessels may fly a blue race committee flag with a fouled anchor.

23. SUPPORT BOATS

n/a

24. TRASH DISPOSAL

n/a

25. HAUL-OUT RESTRICTIONS

n/a

26. DIVING EQUIPMENT and PLASTIC POOLS

n/a

27. RADIO COMMUNICATIONS

- 27.1. The Race Committee will monitor VHF channel 69 and will use this channel to communicate with racers regarding the starting location and the starting sequence. Boats not having a VHF radio or one not operational will not use this as grounds for redress.



28. PRIZES

Prizes will be given as follows:

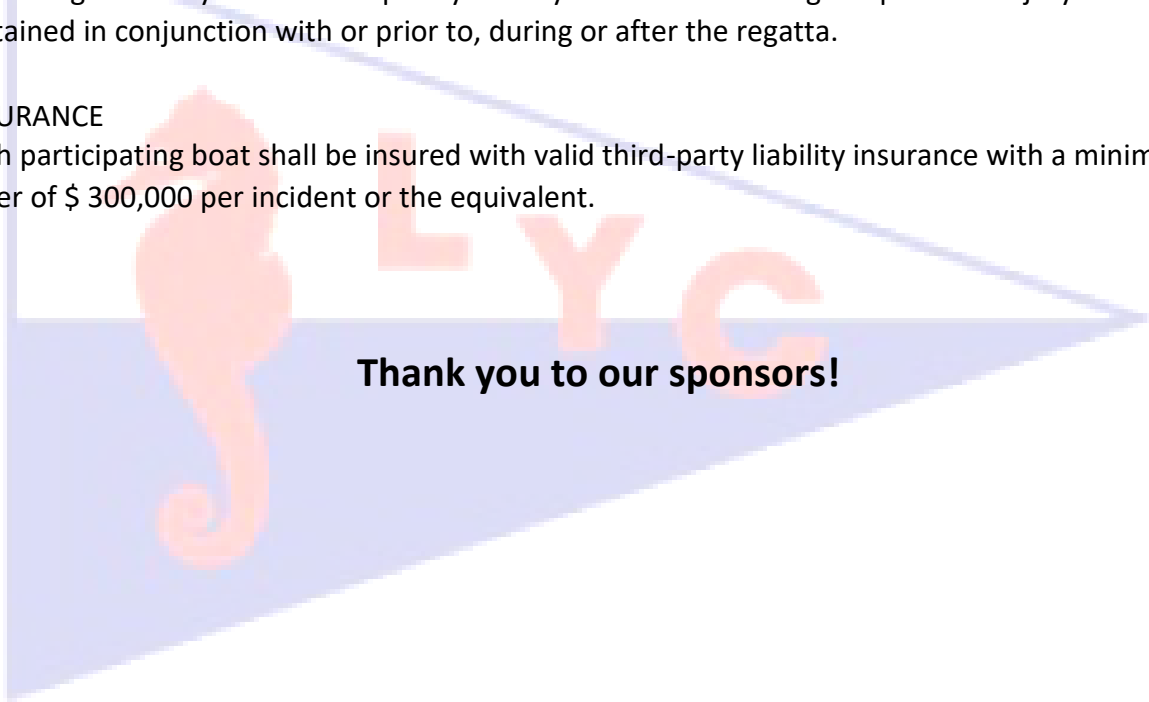
- 28.1. Trophies will be awarded to the first two boats in classes or divisions of four or five boats, to the first three boats in classes or divisions of six or seven boats and to the first four boats in classes with eight or more boats.
- 28.2. Bay Cup Series awards will be given to the top finishers in each class, who will have competed in both 2019 Bay Cup I and 2019 Bay Cup II (same boat, same class, same skipper).
- 28.3. Prizes will be awarded during the post-race party Saturday evening.

29. DISCLAIMER of LIABILITY

Competitors participate in the regatta entirely at their own risk. See RRS 4, Decision to Race. The organizing authority will not accept any liability for material damage or personal injury or death sustained in conjunction with or prior to, during or after the regatta.

30. INSURANCE

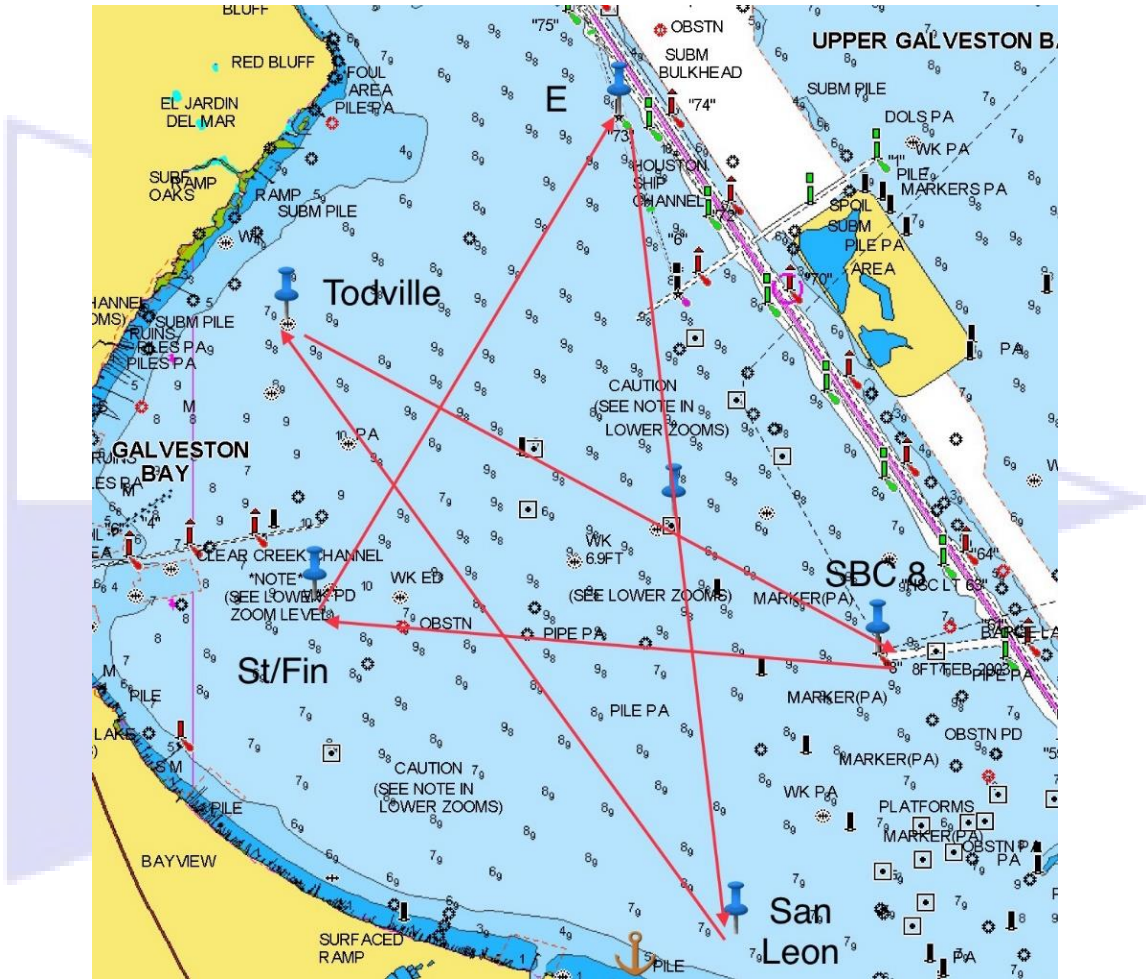
Each participating boat shall be insured with valid third-party liability insurance with a minimum cover of \$ 300,000 per incident or the equivalent.



2019 Bay Cup I Sailing Instructions

ATTACHMENT A: COURSES

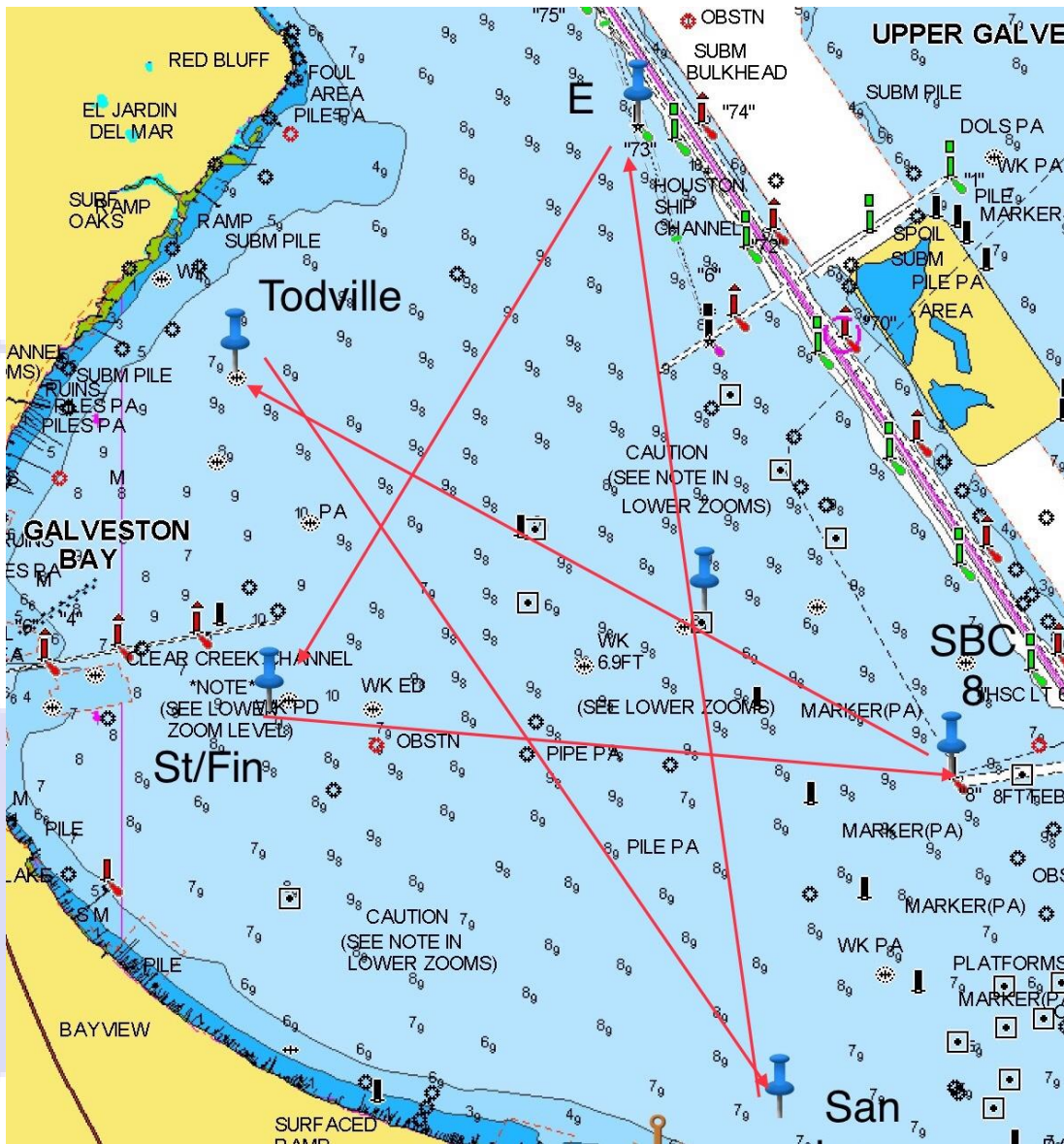
Course 1



	Mark	Approx. Brg.	Leave to:
Start	Start		
1	E	32*	Stbd
2	San Leon	172*	Stbd
3	Todville	324*	Stbd
4	SBC 8	119*	Stbd
Finish	Finish	275*	



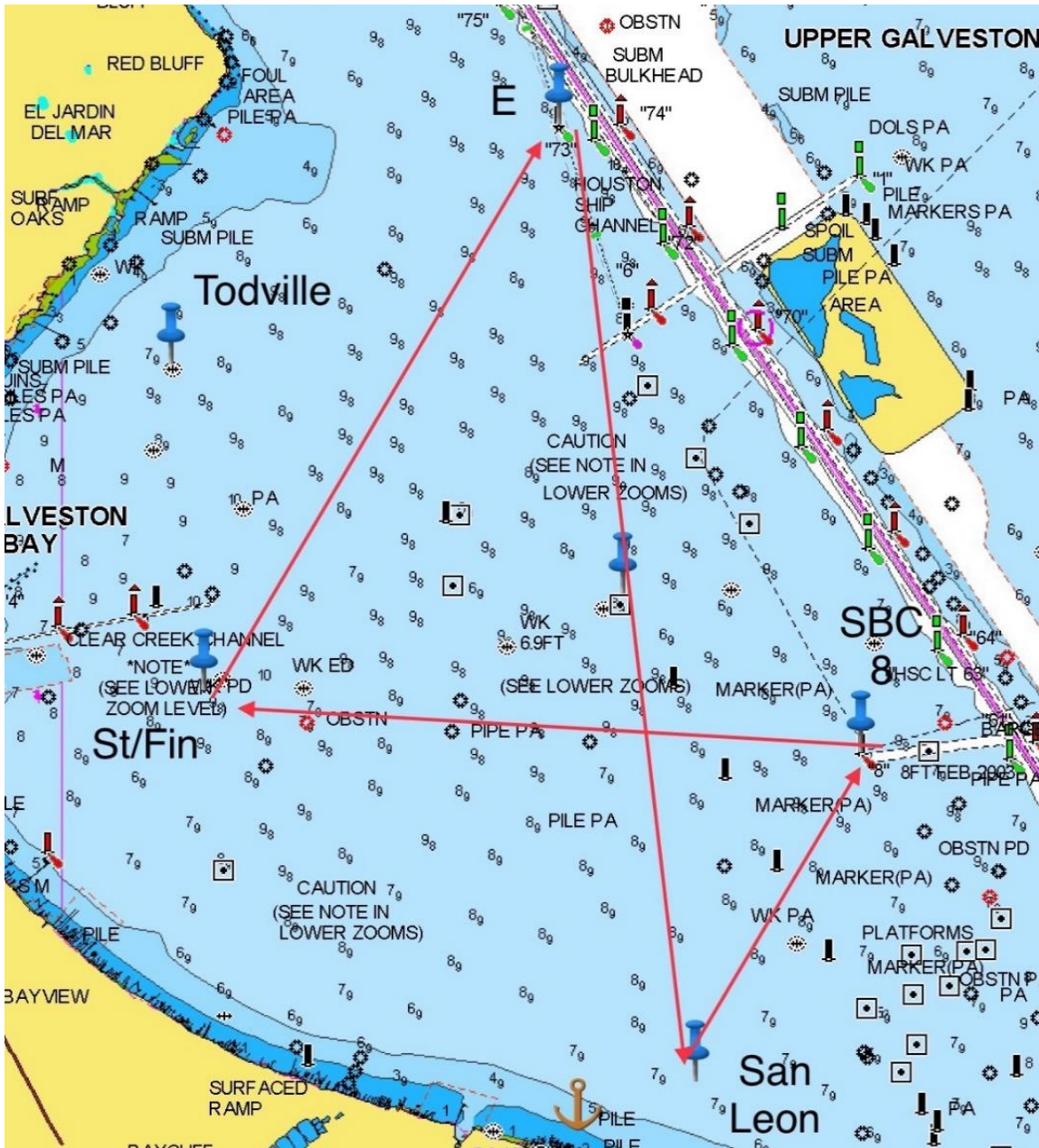
Course 2



	Mark	Approx. Brg.	Leave to:
Start	Start		
1	SBC 8	95*	Port
2	Todville	299*	Port
3	San Leon	144*	Port
4	E	352*	Port
Finish	Finish	212*	



Course 3



	Mark	Approx. Brg.	Leave to:
Start	Start		
1	E	32*	Stbd
2	San Leon	172*	Port
3	SBC 8	26*	Port
Finish	Finish	275*	

Pelican Insurance Agency

SEA LAKE

Little Yacht Sales

SEABROOK

KO SAILING

TEXAS COAST YACHTS

Faron Daigle REALTOR

Davis Marine Electronics

Kevin E. Severance Insurance Agency

RUM

Bay Area Houston

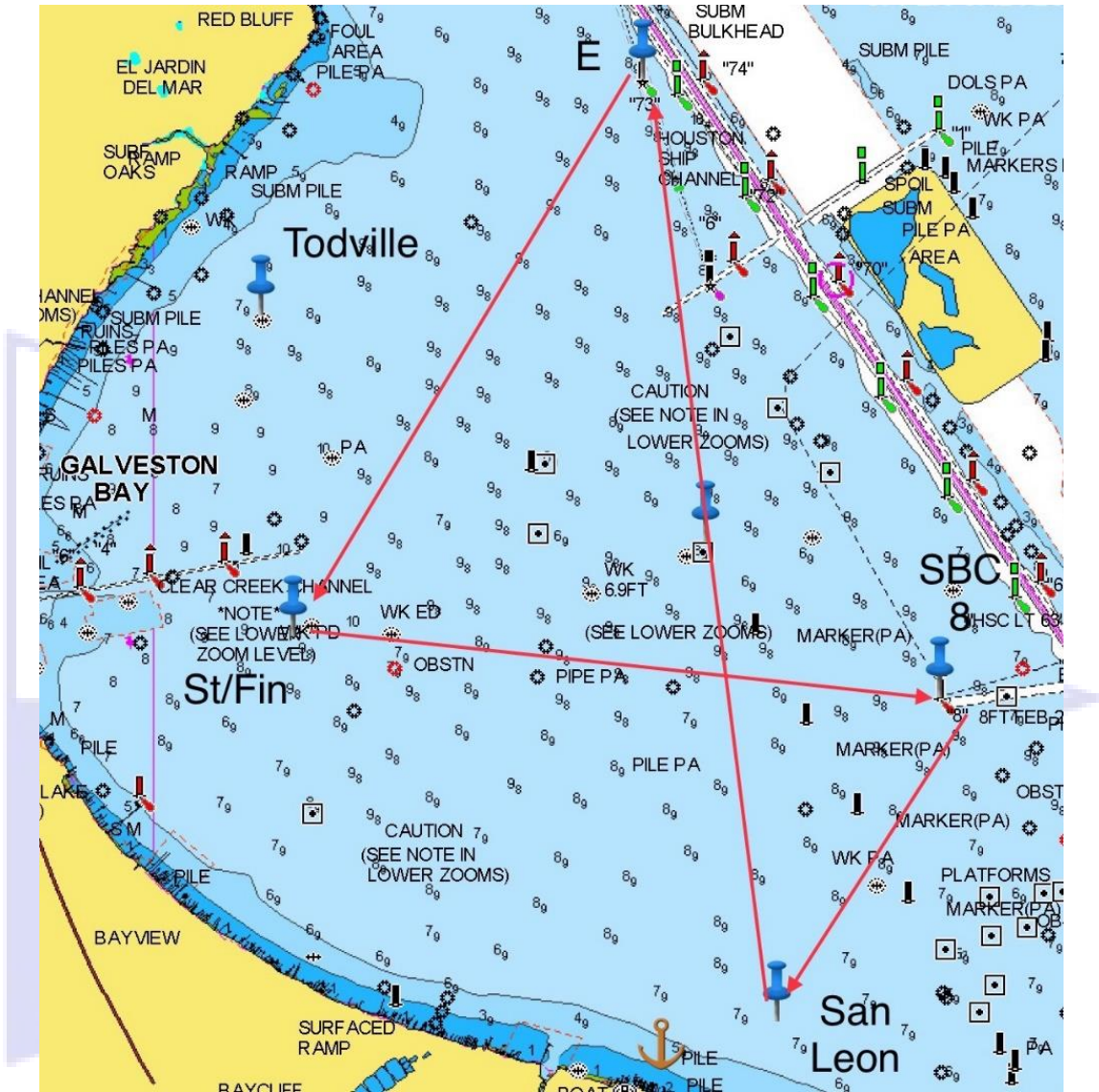
MARINER

TRUE NORTH MARINE

BLACKBURN MARINE

upstream brokers

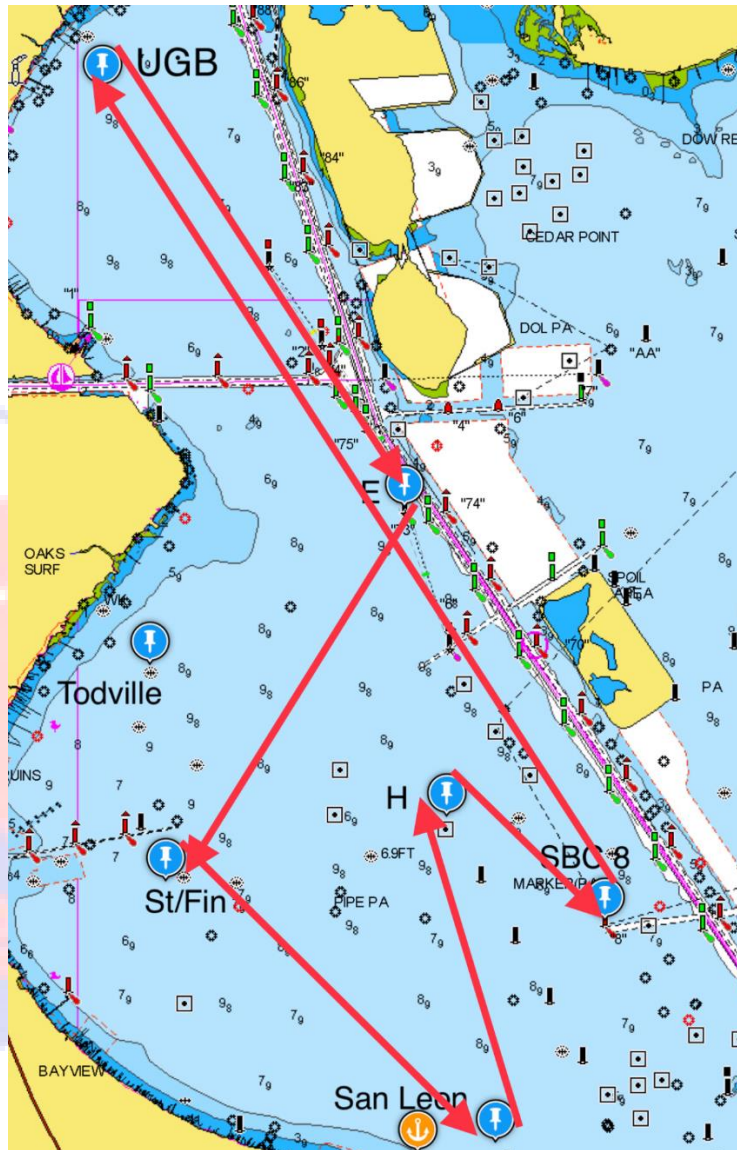
Course 4



	Mark	Approx. Brg.	Leave to:
Start	Start		
1	SBC 8	95*	Stbd
2	San Leon	208*	Stbd
3	E	352*	Port
Finish	Finish	212*	



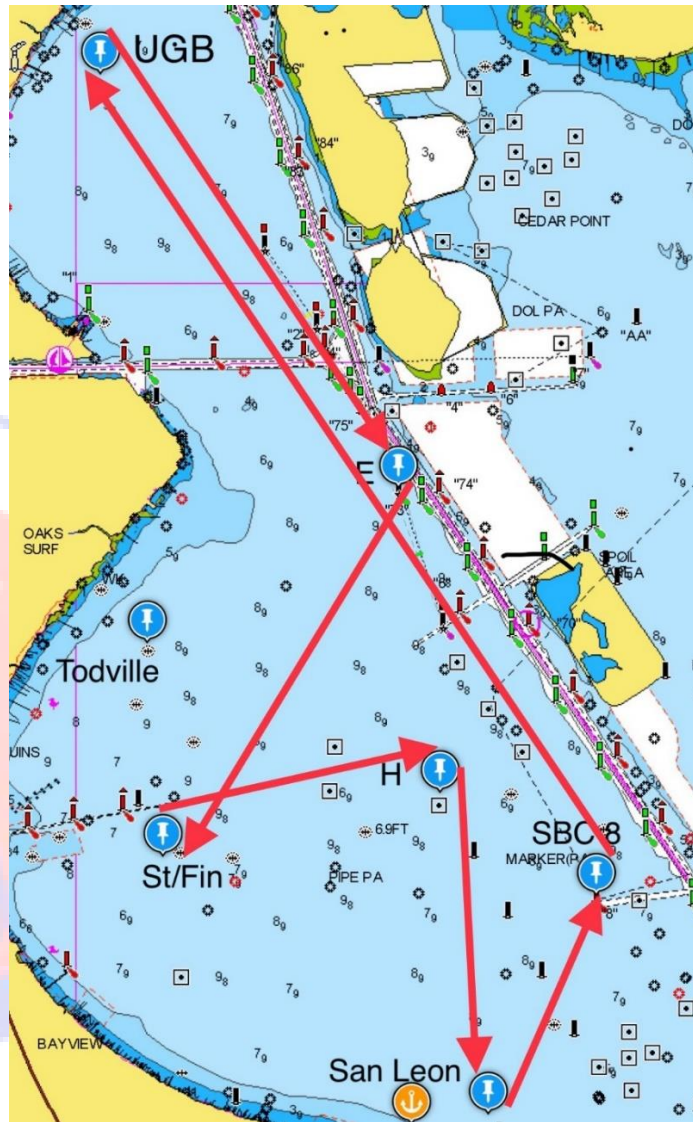
Course 5



	Mark	Approx. Brg.	Leave to:
Start	Start		
1	San Leon	129*	Port
2	H	352*	Stbd
3	SBC 8	123*	Port
4	UGB	329*	Stbd
5	E	144*	Stbd
Finish	Finish	213*	



Course 6



	Mark	Approx. Brg.	Leave to:
Start	Start		
1	H	77*	Stbd
2	San Leon	172*	Port
3	SBC 8	26*	Port
4	UGB	329*	Stbd
5	E	144*	Stbd
Finish	Finish	213*	

