

# NOTICE OF RACE

## 22<sup>th</sup> Annual BassAckwards Race

Saturday July 27, 2019  
Red Brook Harbor, Cataumet, MA  
Starting Sequence Begins at 11:55 Noon

The race is an informal, friendly sailing competition designed to present a sporting challenge to experienced and novice racers alike. Both racing and cruising class boats will compete on the same course, with start times determined by boat rating. First boat to cross the finish line wins.

The race will benefit the sailing programs of the Bourne Community Boating and the Buzzards Sailing School both 501(c)(3) charitable organizations. Additional donations are always welcome.

The race will be managed by the Old Sigh Race Series who will have the authority to interpret the rules and conditions of the race, and to reject the entry of any boat at any time prior to the preparatory signal for the start of the race that, in their opinion, is not seaworthy or does not comply with the spirit of the rules and conditions of the race.

### **ELIGIBILITY**

The 2019 BassAckwards Race is a pursuit race open to all single-hulled sailboats with a 2019 PHRF-NE Certificate with a cruising rating of 257 or less. If no current NE PHRF certificate is presented, eligibility will be determined by the race committee.

### **RULES AND REGULATIONS**

The race will be sailed under The Racing Rules of Sailing, 2017-2020, including US SAILING Prescriptions and supplemented by these sailing instructions and amendments thereto.

Time allowances will be determined by the Race Committee based on a yacht's 2019 PHRF-NE rating, or as assessed by the Race Committee if entry does not have a 2019 PHRF-NE Certificate..

Racing Class: Use of an asymmetrical spinnaker as per PHRF-NE By-Laws is permitted and will be factored into rating for the race.

Cruising Class: Use of any type of spinnaker (incl. "cruising" spinnakers), double headed headsail combinations (luffs attached to the forestay), or mizzen staysails is not permitted.

### **OWNERS' AND SKIPPERS' RESPONSIBILITIES**

The safety of the boat and her crew is the sole responsibility of the skipper, who must assure that the boat is seaworthy and manned by a competent crew. The skipper must assure that all equipment is properly maintained and stowed, and that the crew knows where it is kept and how to use it. Neither the establishment of equipment regulations nor any inspection of a boat in any way limits or reduces the complete and unlimited responsibilities of a boat's skipper. It is the sole and exclusive responsibility of the skipper and crew of a boat to decide whether or not to start or continue in the race. The Old Sigh Race Series and/or Event Sponsors are in no way responsible for accidents or injury to boats or personnel suffered in any way or from any cause during or related to the BassAckwards Race.

## **ENTRY AND ENTRY FEE**

A valid entry requires all of the following:

- Completion of the on line entry form and payment of \$75
- A copy of the boat's 2019 PHRF-NE rating certificate or, if 2019 is not yet received, a rating will be assigned by the Race Committee.
- Entry fee payment in the amount of \$75 per boat. Entry fee covers the costs of:
  - ✓ Participation of one boat in the BassAckwards Race
  - ✓ Admission for captain and crew to the Saturday afternoon Awards Party at the Kingman Yacht Clubhouse, including food,

## **SCRATCH SHEET AND RACE INSTRUCTIONS**

A scratch sheet (listing boat names, sail numbers, ratings and starting times) and race instructions will be distributed to all boats online Friday, July 26 at 7PM. A limited number will be available from the Race Committee boat prior to the start of the race.

## **AWARDS**

The first Cruising Class and first Racing Class boats to complete the course and cross the finish line will each be awarded a "BassAckwards Trophy." The first overall finisher will also be added to "The Chair," which is on permanent display at the Chart Room restaurant at Kingman Yacht Center, will be inscribed on the BassAckwards Perpetual Trophy to reside at the winner's yacht club for the next year, and added to the "Hall of Fame" on the race web site.

A trophy will also be awarded to the boat most velocity challenged, crossing the finish line in last place but probably having had the most fun.

Awards will be presented at the Kingman Yacht Clubhouse on Saturday afternoon, or arrangements may be made to pick them up by contacting the race organizer or a KYC Flag Officer.

## **RACE COURSE AND START**

The race will be started and finished in the vicinity of Eustis Rock in Outer Red Brook Harbor, between Scraggy Neck and Wings Neck in Bourne, MA. The race course will be defined in the Race Instructions. The BassAckwards Race is a pursuit race of all boats on the same course, with a staggered start in order from the highest rating on down as indicated on the Scratch Sheet.

There will be a race starting sequence – first warning signal at 11:55AM. First boat starts at 12:00 Noon. After 11:50AM, registered boats are required to keep away from the starting line area until five minutes prior to their start time. The Committee Boat is on VHF channel 78.

If the race is postponed, the listed starting order and time differences between each start will be maintained when the starting sequence is resumed.

The finish position of a boat is the actual order of finish.

## **SPECIAL INSTRUCTIONS**

If a boat crosses the starting line early, it will need to restart and ten minutes will be added to its finish time. If any boat is observed by the Race Committee to obstruct a starting boat's progress in the immediate vicinity of the starting line, the Committee may add thirty minutes to the obstructing boat's finish time.

In the event of fog, all turning marks must be sighted during their rounding and time of rounding entered in a log.

## **PROTESTS**

Protests are discouraged. Race participants are encouraged to rectify any rule infractions by executing a 360 degree turn (change from RRS) on the race course during the race as soon as possible and before the next mark.

A protesting yacht should attempt to notify the protested yacht on the race course and must notify the Race committee upon finishing or retiring. All protests will be filed in person with the Race Committee at the Kingman Yacht Club approximately 1 hour after the finish of the last yacht. Protests should not be made via VHF radio. Protest will be decided by the Protest Committee which will be determined by the Race Committee and will be made up of three disinterested parties (at a minimum not racing in the same class).

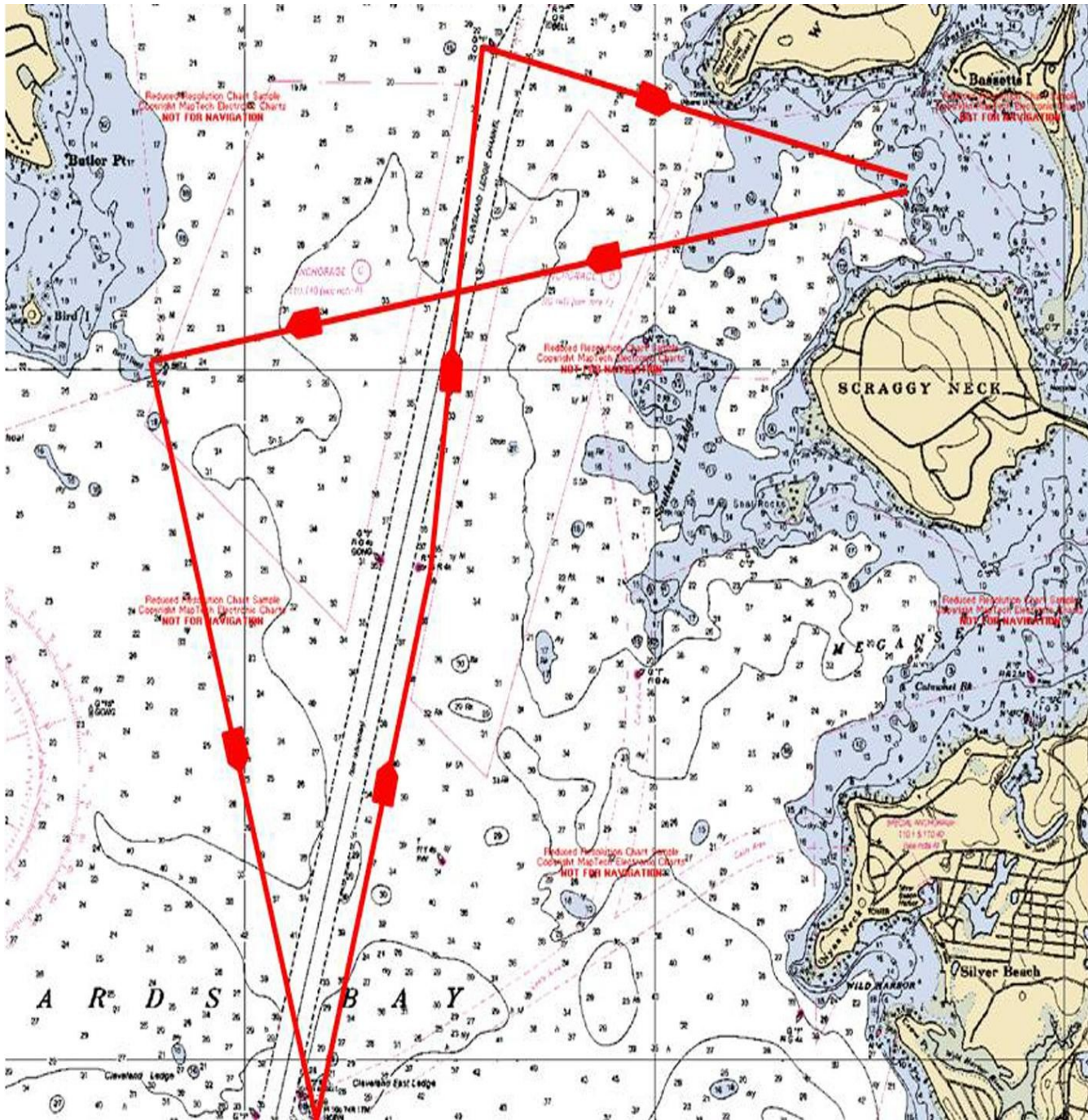
## **POSTPONEMENT AND ABANDONMENT**

The Race Committee may decide to postpone the race for weather-related reasons. In this event, the race will be sailed at the same time on Sunday, July 31st. If inclement weather persists the second day, the race will be canceled by the Race Committee. Boats should call the KYC Race Committee on VHF channel 78 if there are any questions of weather-related postponement.

The Race Committee reserves the right to abandon and/or shorten the race. In the event that the course is shortened, the Committee will use handicaps recomputed for the shortened course.

**Any boat deciding to retire from the race shall inform the Committee Boat either by hail or VHF radio.** Starting of an engine while on the course will be considered as retiring from the race.

# COURSE MAP



For more information about the 22<sup>th</sup> Annual BassAckwards Race, please visit our web site at [www.oldsighraceseries.com](http://www.oldsighraceseries.com)