



2019 Leukemia Cup Regatta
 Organizing Authority: The Cleveland Yachting Club
July 26, 2019 ONLY
SAILING INSTRUCTIONS

The notation '[DP]' in a rule in the SI means that the penalty for a breach of that rule may, at the discretion of the protest committee, be less than disqualification.
The notation '[NP]' in a rule in the SI means that instruction is not grounds for protest or a request for redress by a boat. This changes RRS 60.1.

1 RULES

- 1.1 The regatta is governed by the rules as defined in the current *Racing Rules of Sailing* (RRS).
- 1.2 US Sailing prescription to RRS 63.2 and 63.4 shall not apply.
- 1.3 RRS Appendix V including V1 and V2 shall apply as changed by SI 11.2.

2 NOTICES TO COMPETITORS AND INFORMATION MEETING(S)

- 2.1 Notices to competitors shall be posted on the official Notice Board located near the Center Isle.

3 CHANGES TO SAILING INSTRUCTIONS

- 3.1 Any change to the sailing instructions shall be posted not less than two (2) hours prior to the first scheduled race on the day it shall take effect.

4 SIGNALS MADE ASHORE

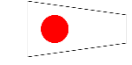
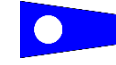
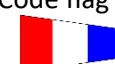


- 4.1 Signals made ashore shall be displayed from the flagpole located on the Southeast side of the Center Isle.
- 4.2 When flag AP is displayed ashore, "1 minute" is replaced with "not less than 60 minutes" in race signal AP. *This changes race signals AP*
- 4.3 Since numeral pennants are used as class flags, the RRS Race Signals section "AP over a numeral pennant 1-9" is deleted in its entirety.

5 SCHEDULE OF RACES

- 5.1 One race is scheduled.

Race	Type	Day/Date	First Warning
Random Leg Race	Fixed and Drop Marks	Friday, July 26	6:55 PM

6 CLASS FLAGS

Womens – Code flag #1 	Doublehanded – Code flag #2 	"All fleets" Spinnaker – Code flag #3 	"All Fleets" JAM – Code flag #4 	Under 35 – Code flag #5 
--	--	--	--	--

Classes may be combined.

7 RACING AREA & COURSES

The start will be in the vicinity of CYC D mark. Courses and directions are attached, see "Courses - Illustration 1"

8 THE START

- 8.1 The starting line shall be between a staff displaying an orange flag on the signal vessel and the course side of CYC D mark.
- 8.2 Boats whose warning signal has not been made shall avoid the starting area during the sequence for other races. [DP][NP]
- 8.3 A boat that does not start within four (4) minutes of her starting signal shall be scored Did Not Start without a hearing. *This changes rules A4 and A5.*
- 8.4 If any part of a boat's hull, crew or equipment is on the course side of the starting line after her starting signal and she is identified, the race committee will attempt to broadcast her sail number on VHF channel for competitor communication as noted in instruction 20.1. Failure to make a broadcast, the order of sail numbers called, or to time it accurately will not be grounds for a request for redress. This changes RRS 62.1(a).

9 COURSE CHANGES

- 9.1 **After the starting signal** - To change the next leg, as allowed by RRS 33, the race committee will lay a new mark, move the finishing line or move the gate and remove the old mark as soon as practicable. When in a subsequent change a new mark is replaced, it will be replaced by an original mark.

10 THE FINISH

- 10.1 The finishing line shall be between a staff displaying an Orange flag on the signal boat and the course side of the nearby mark.

11 PENALTY SYSTEM

- 11.1 **Penalties at the time of the incident:** The first two sentences of rule 44.1 are changed to: "A boat may take a One-Turn Penalty when she may have broken a rule of Part 2 or rule 31 while racing. However, when she may have broken a rule of Part 2 while in the zone around a mark other than a starting mark, her penalty shall be a Two-Turns Penalty."
- 11.2 Penalties within three (3) boat lengths of Mark 1 or on the leg from Mark 1 to Mark 1a may be delayed and taken as soon as possible on the downwind leg. *This changes RRS 44.2 and V1*
- 11.3 **Penalties after the race:** After a race, a boat that may have broken a rule of Part 2 or rule 31 while racing may take a Post-Race Penalty for that incident. The penalty shall be a 20% Scoring Penalty, calculated as stated in rule 44.3(c). However, rules 44.1(a) and (b) apply and the penalty shall not be taken after a protest hearing involving the incident has begun. A boat takes a Post-Race Penalty by informing the race committee in writing and identifying the race number and when and where the incident occurred.

12 TIME LIMITS

- 12.1 The time limit to sail the course and finish is two hours.
- 12.2 If no boat of a class has reached the first mark within 45 minutes, the race shall be abandoned for that class only.
- 12.3 **Finishing Window All Classes—** A boat or boats failing to finish within twenty (20) minutes after the first boat in her class sailed the course and finished, and before the time limit as specified in SI12.1, will be scored Time Limit Expired (TLE) without a hearing. *This changes RRS 35, A4.1, A5 and A11.*

13 PROTESTS AND REQUESTS FOR REDRESS

- 13.1 RRS 61.1(a) is changed so that "A boat intending to protest about an incident that occurs in the racing area shall notify the race committee finish boat of her intention as soon as possible after finishing, including the sail number of the boat(s) being protested until acknowledged by the Race Committee signal boat.
- 13.2 Protest forms are available at race headquarters Center Isle. Protests and requests for redress shall be delivered there to a Judge or the Jury Secretary at the Judges Table within the appropriate time limit.
- 13.3 For each class, the protest time limit is one (1) hour after the RC signal vessel for their course area docks after the last race of the day or the RC signals no more racing today, whichever is later.
- 13.4 Notices will be posted no later than thirty (30) minutes after the protest time limit to inform competitors of hearings in which they are parties or named as witnesses. Hearings shall be held inside the main

Clubhouse, beginning at the time posted on the official notice board. All parties to Protest Meetings shall meet at the Judges Table 10 minutes prior to their scheduled meeting time; Protest Meetings that do not have all Parties present at its start shall move to the end of scheduled Protest Meetings.

- 13.5 Protests by the RC, Technical Committee (TC) or Protest Committee (PC) shall be posted to inform boats under RRS 61.1(b).
- 13.6 Protests resulting from the Friday night race will be heard after racing on Saturday.
- 13.7 On the last scheduled day of racing a request for redress based on a PC decision shall be delivered no later than thirty (30) minutes after the decision was posted. *This changes RRS 62.2.*
- 13.8 If the RC posts a list of boats scored OCS, ZFP, UFD, BFD or TLE on the official notice board before the protest time limit, a request for redress based on such a posted score shall be made no later than one (1) hour after the after the penalties are posted. *This changes RRS 62.2.*

14 SCORING

- 14.1 One (1) race is required to be completed to constitute a series.
- 14.2 Questions regarding scoring or a boats rating may be resolved by the proper filing of a Scoring Inquiry Form which shall be available at the Judges table. If the resolution of scoring issue proves unsatisfactory, boats may request redress as available to them under RRS 62.
- 14.3 TLE shall be Class Finishers plus 2 or equal to DNC whichever is less.

15 SAFETY REGULATIONS

- 15.1 **Check-In** - All boats shall check-in with the Race Committee boat displaying the "L" flag on their assigned race area at least five minutes before the first warning signal. Each boat shall sail past the committee boat on starboard tack and hail their sail number until acknowledged by the Race Committee. [DP][NP]
- 15.2 **Retirement** - A boat that retires from a race shall notify the RC as soon as possible. [DP][NP]

16 RADIO COMMUNICATION

- 16.1 All radio communications between the RC and the competitors shall be on the VHF channel **72**
- 16.2 Various race information, including notification of OCS boats after the start, may be provided by the RC as a courtesy to competitors. This does not in any way alter the competitor's responsibility to observe the RC's visual signals which shall govern the conduct of the racing. [NP]
- 16.3 Except in an emergency, a boat shall neither make radio transmissions while racing nor receive radio communications not available to all boats. [DP][NP]

17 PRIZES

- 17.1 Prizes will be awarded for First, for Womens only, Doublehanded entrants and CSA Under 35/I-LYA Juniors as well as "all fleets" scored under Spinnaker and/or JAM as applicable.
- 17.2 Other prizes may be awarded at the discretion of the Organizing Authority and/or individual classes.

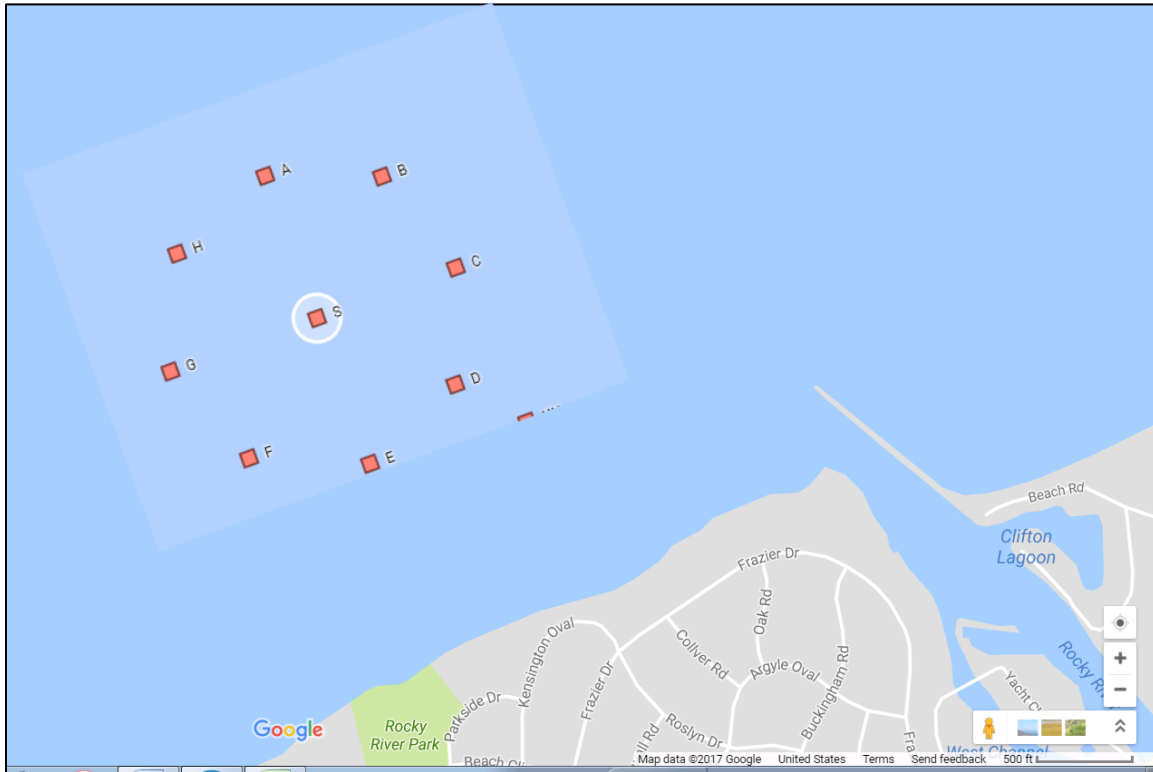
18 DISCLAIMER OF LIABILITY

- 18.1 Competitors participate in the regatta entirely at their own risk. See RRS 4, Decision to Race. The organizing authority shall not accept any liability for material damage or personal injury or death sustained in conjunction with or prior to, during, or after the regatta.

COURSES - ILLUSTRATION 1

Random Leg Course

Friday July 26, 2019



Marks to be rounded in the following order:

Mark	Approx. Bearing to Next Mark	Round to:	Distance to Next Mark
Start	Upwind		0.75Nm
Orange Tet	?	P/S (As displayed)	?
F	325	Starboard	0.66
G	75	Starboard	0.87
S	120	Starboard	0.87
D	Finish	Starboard	Finish
	Mark	Approx. Coordinates	
	F	41.30.180 N	81.51.380 W
	G	41.30.630 N	81.52.000 W
	S	41.30.960 N	81.50.920 W
	D	41.30.630 N	81.49.830 W

Orange Tet is to be rounded either to port or starboard depending on the course to the next mark. Before the start, the Race Committee will display either a RED flag (port rounding) or GREEN flag (starboard rounding) from the starboard corner of the Race Committee Signal Boat.