

## 2019 ANNUAL JUNIOR REGATTA

JULY 30

### SAILING INSTRUCTIONS

#### 1 RULES

- 1.1 The Regatta will be governed by the current Racing Rules of Sailing.

#### 2.1 NOTICE TO COMPETITORS

- 2.1 Notices to competitors will be posted on the official notice board located on the East window of the WRSC clubhouse

#### 3 SIGNALS MADE ASHORE

- 3.1 Signals made ashore will be displayed from the flagpole located at WRSC. When flag AP is displayed ashore, '1 minute' is replaced with 'not less than 1 hour' in the race signal AP.

#### 4 SCHEDULE OF EVENTS

- 4.1 1030 First Warning  
1600 No race after.  
Awards will follow racing.

- 4.2 Number of Races: There is no limit to the number of races. The committee will attempt to maximize racing for the conditions available.

#### 5 CLASS FLAGS

- 5.1 Class flags will be the respective insignia or as described at the competitor's meeting.

#### 6 COURSES

- 6.1 Courses will be shown in Appendix A.

#### 7 MARKS

- 7.1 All marks will be as described at the Competitor's Meeting

#### 8 STARTS AND FINISHES

- 8.1 The starting line will be between a staff displaying an orange flag on the RC boat and the starting pin as described during the competitor's meeting. Starting sequence will be as said in the competitor's meeting. The finishing line will be between a staff displaying an orange flag on the RC boat and the finishing pin as described during the competitor's meeting. The starting and finishing pin may be the same mark.

#### 9 TIME LIMITS

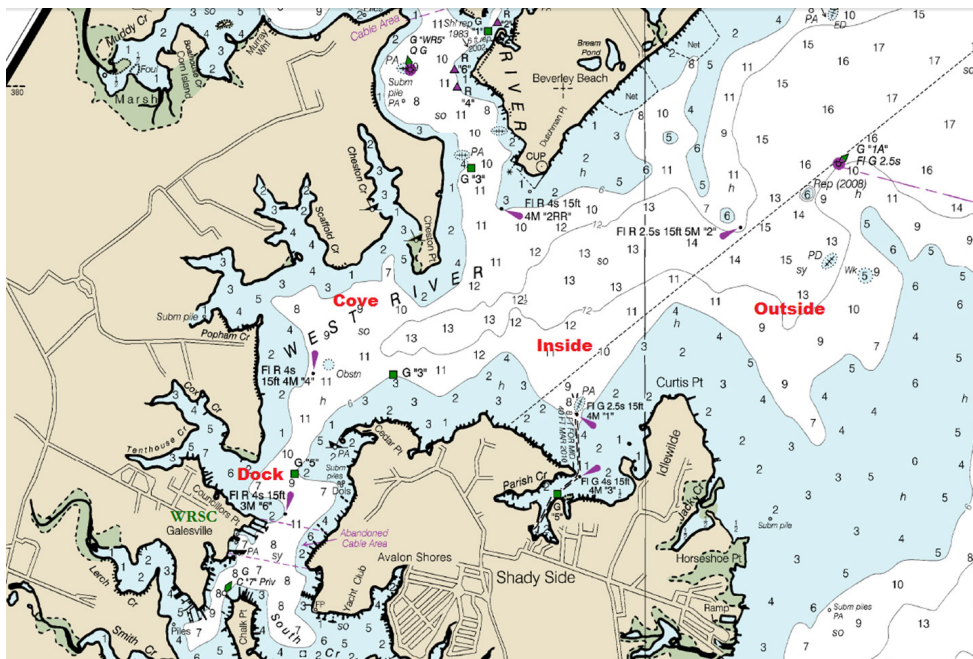
- 9.1 1) The first boat must finish within 90 minutes  
2) All boats failing to finish within 30 minutes after the first boat finishes, will be scored DNF without hearing. This changes RRS 35, A4 and A5.  
3) There is a 30 minutes time limit for the first boat to round Mark 1

# 2019 ANNUAL JUNIOR REGATTA SI's

## 10 RACE AREAS

10.1 The fleets areas are as following, these are labelled on the chart below.

- Green Fleet - Dock**
- Opti RWB - Cove**
- Laser/420 - Inside**



## 11 RACE AREAS

- 11.1 Protest Forms are available in the board room. Protests and requests for redress or reopening shall be delivered to the PRO within one hour after the RC returns to the dock
- 11.2 Protests must be reported to the Finish RC within 15 minutes after the protestor's finish.

## 12 SCORING

- 12.1 One race is required to be completed to constitute a series. Low point system will be used, except there will be no throw out.

## 13 SAFETY

- 13.1 All competitors' boats shall sail astern of the Signal Boat, give their sail number, and wait for acknowledgement from the RC.
- 13.2 A boat that retires from a race shall notify the RC as soon as possible.
- 13.3 Coaches and competitor's shall wear USCG approved Type III Personal Floatation Devices (PFD's) at all times while afloat, except for brief periods while changing. Floatation aids (Zhik, Baltic) are not permitted to be worn.
- 13.4 Competitor's failure to comply with Safety Regulations part 3 will be grounds for disqualification from all races sailed in violation of those instructions. In case of a coach not complying with these instructions, all sailors associated with his/her club may be subject to a penalty imposed by the protest committee, up to and including disqualification from all races sailed.

# 2019 ANNUAL JUNIOR REGATTA SI's

14  
14.1

## DISCLAIMER OF LIABILITY

Competitors participate in the regatta entirely at their own risk. See RRS 4, Decision to Race. The organizing authority will not accept any liability for material damage or personal injury or death sustained in conjunction with or prior to, during, or after the regatta.

## APPENDIX A

Offset marks are discretion of the course's Race Committee. Please ignore whether or not the diagrams have offsets labeled or not. All starting and finishing lines are closed.

W2: S-1-2S/P-F      W3: S-1-2S/P-1-2S/P-F  
 L1: S-1-F            L2: S-1-2S/P-1-F  
 WL1: S-1-2-F        WL2: S-1-2-1-2-F  
 T1: S-1-2-3-F        T2: S-1-2-3-1-2-3-F

