

LAYC

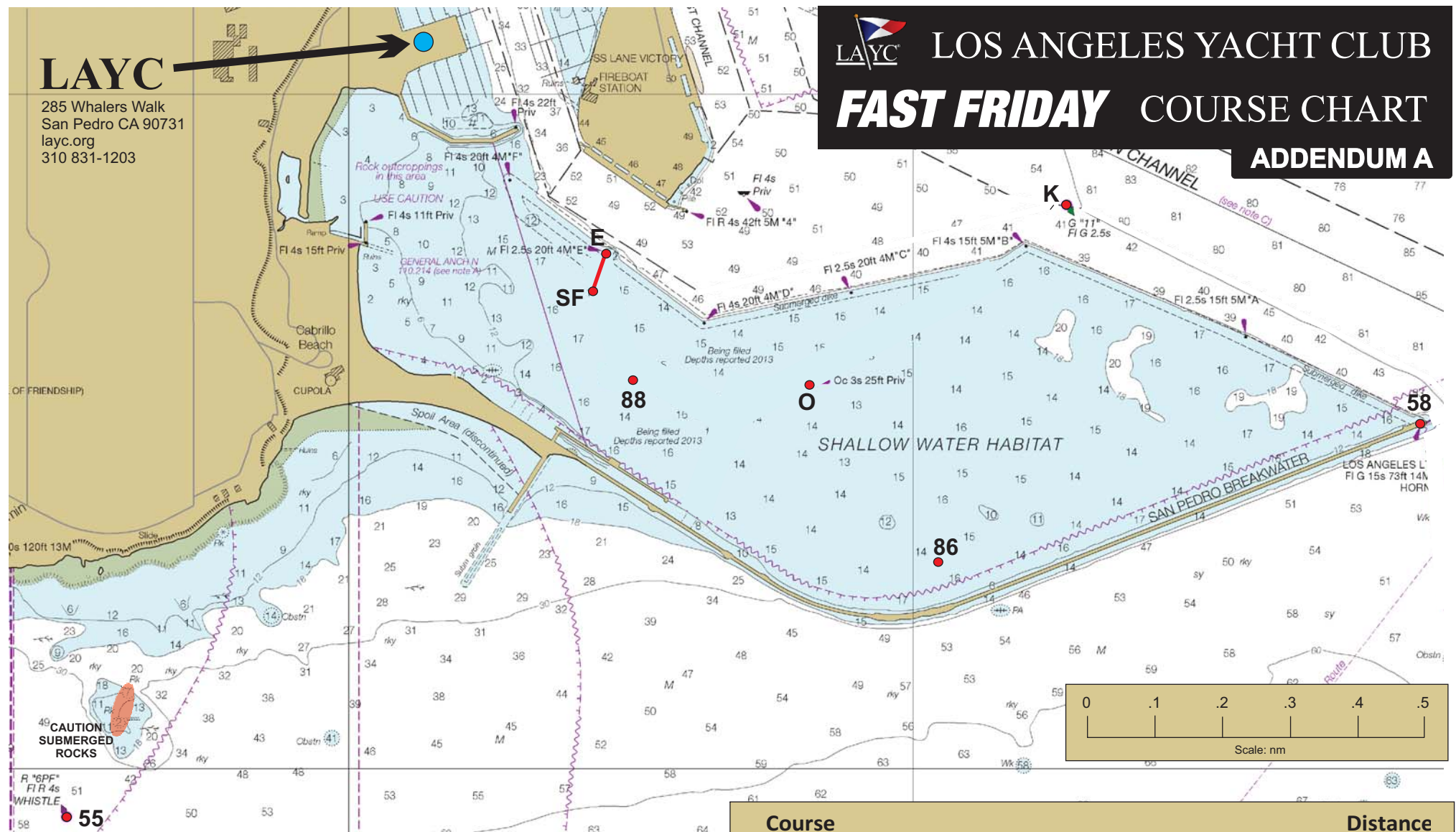
285 Whalers Walk
San Pedro CA 90731
layc.org
310 831-1203



LOS ANGELES YACHT CLUB

FAST FRIDAY COURSE CHART

ADDENDUM A



Mark	Marks rounded to port unless otherwise indicated
SF	Start Finish Line between Mark E & Orange Flag on Signal Boat south of Mark E
E, O	Dolphin Structures
K	Green channel buoy "G11"
86	Yellow Buoy
88	Tall Yellow Spar Buoy
55	Pt. Fermin Whistle Buoy
58	LA Light (east end of San Pedro breakwater)



8.7.2019

Course	Distance
1 SF K E K SF	2.8 nm
2 SF K 88 K SF	2.8 nm
3 SF K O K SF	2.3 nm
4 SF K 86 K SF	2.5 nm
5 SF K E K E K SF	4.1 nm
6 SF K 88 K 88 K SF	4.2 nm
7 SF K O K O K SF	3.2 nm
8 SF K 86 K 86 K SF	3.7 nm
9 SF 58s 55 58 SF	6.7 nm