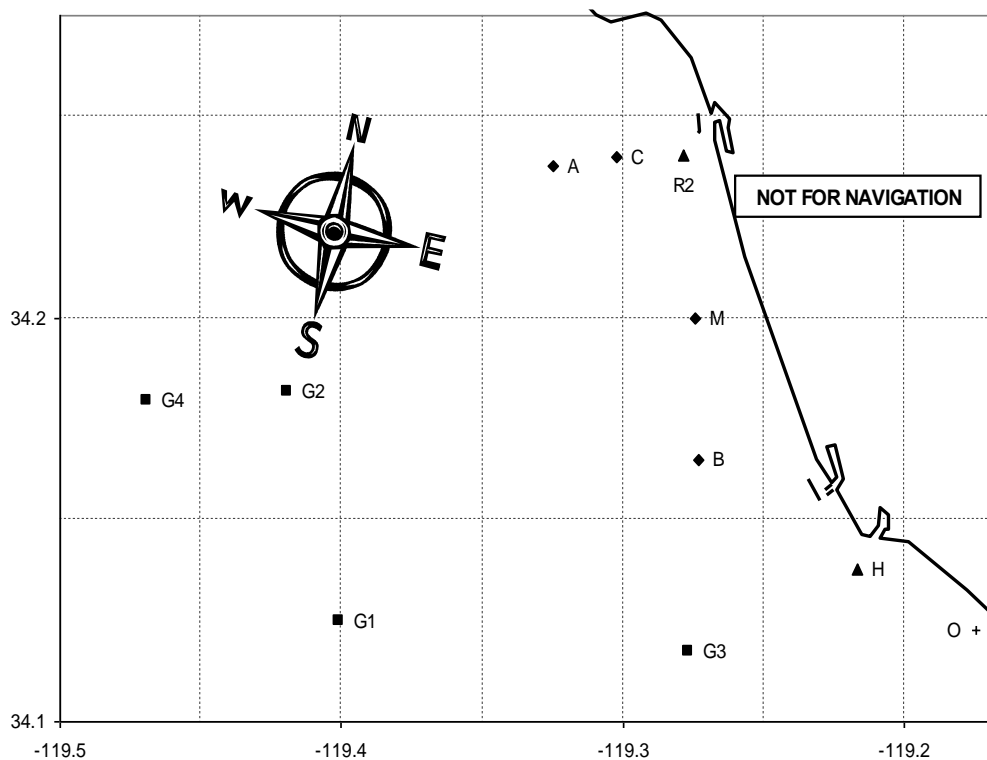


## Channel Islands Yacht Club – Race Course Chart 2019

#	nm	Waypoints (see Codes below)	Approx Bearing to 1 <sup>st</sup> Mark
1	5.1	M Bp Fc	165°M
2	8.9	M G3p Fc	170°M
3	10.8	M G3s Bs Fc	170°M
4	14.2	M G3p Ms Fc	170°M
5	19.8	M G3s R2s Bp Fc	170°M
6	20.4	M G3s G1s Fc	170°M
7	17.4	M G2p Fc	220°M
8	17.7	M G1p G3p Fc	220°M
9	23.0	M G1p G3p Ms Fc	220°M
10	17.4	M G2p Fc	250°M
11	19.1	M G2p G3p Fc	250°M
12	11.6	M Ap Fc	300°M
13	10.3	M Cp Bp Fc	320°M
14	12.0	M Ap Bp Fc	300°M



Code	Marks	Approximate Location
A	Fish Sticks spar buoy	34° 14.5' N 119° 19.9' W
B	"Wes" Mark (spar buoy)	34° 09.9' N 119° 16.5' W
C	Chips spar buoy	34° 14.4' N 119° 17.9' W
M	Mandalay spar buoy	34° 12.0' N 119° 16.5' W
O	Ormond Buoy	34° 07.4' N 119° 10.5' W
R2	Ventura R2 whistle buoy	34° 14.4' N 119° 16.7' W
G1	Platform Gail	34° 07.5' N 119° 24.1' W
G2	Platform Gilda	34° 10.9' N 119° 25.2' W
G3	Platform Gina	34° 07.0' N 119° 16.6' W
G4	Platform Grace	34° 10.8' N 119° 28.1' W