

# Bluster on the Bay

January 17-20, 2020

Organizing Authority: Hobie Division 8, Fleet 5, Fleet 36,  
Fleet 80, Fleet 42 and Red Gear Racing  
Magnuson Hotel Marina Cove – St. Petersburg, Florida

## SAILING INSTRUCTIONS

*The notation [DP] in a rule in the SI means that the penalty for a breach of that rule may, at the discretion of the protest committee, be less than disqualification.*

### 1 RULES

The regatta will be governed by the rules as defined in *The Racing Rules of Sailing*.

### 2 NOTICES TO COMPETITORS & COMPETITORS' MEETINGS

- 2.1 Notices to competitors will be posted on the official notice board located at the Tiki Bar.
- 2.2 There will be a competitors' meeting on Saturday, January 18, at 1000 hrs. at the Tiki Bar.

### 3 CHANGES TO SAILING INSTRUCTIONS

Any change to the sailing instructions will be posted not less than 60 minutes before the first scheduled race on the day it will take effect, except that any change to the schedule of races will be posted by 1800 hrs. or by the protest time limit, whichever is later, on the day before it will take effect.

### 4 SIGNALS MADE ASHORE

- 4.1 Signals made ashore will be displayed on the flagpole located at the Tiki Bar.
- 4.2 When flag AP is displayed ashore, "1 minute" is replaced with "not less than 30 minutes" in the race signal AP. This changes Race Signals AP.

### 5 SCHEDULE OF RACES

- 5.1 Racing will be held January 18-20. The Race Committee intends to run from three to five races per day. There is no maximum number of races per day or for the regatta.
- 5.2 The scheduled time of the warning signal for the first race on Saturday, January 18, is 1200 hrs.
- 5.3 The scheduled time of the warning signal for the first race on January 19 and January 20 is 1100 hrs.
- 5.4 On the last scheduled day of racing no warning signal will be made after 1400 hrs.

### 6 CLASS FLAG

The class flags will be:

- A-Cat – foiling division: white flag with black A-Cat insignia
- A-Cat – classic division: blue flag with black A-Cat insignia
- Hobie 16: pink flag with black Hobie insignia
- Hobie Wave: white flag with black Hobie insignia
- F-18 and Nacra 15: red flag with black Formula insignia

### 7 RACING AREA

The racing area will be in Tampa Bay east of the Skyway Bridge. See Attachment A.

### 8 THE COURSES

- 8.1 Hobie Class Association standard courses will be used. See Attachment B for course configurations. The race committee may amend these courses – see posted amendments on the official notice board.
- 8.2 Only courses 1, 2, 3, 5, 6 and 7 will be used. The "G" option will not be displayed if a gate is used.
- 8.3 Mark C may be a gate or a single mark. If Mark C is a single mark, it shall be left to port.

## 9 MARKS

- 9.1 Rounding marks A, B and C (gate) will be inflatable marks.
- 9.2 Starting and finishing marks will be inflatable marks distinct from the rounding marks, or an anchored boat displaying a staff with an orange flag.
- 9.3 The color and shape of marks will be posted on the official notice board.

## 10 [RESERVED]

## 11 THE START

- 11.1 The starting line will be between a staff displaying an orange flag on the signal boat and the course side of the mark or a staff displaying an orange flag on a race committee boat.
- 11.2 A boat starting later than five (5) minutes after her starting signal will be scored Did Not Start without a hearing. This changes RRS A4 and A5.
- 11.3 Boats whose warning signal has not been made shall avoid the starting area during the starting sequence for other races. [DP]

## 12 CHANGE OF THE NEXT LEG OF THE COURSE

- 12.1 To change the position of the next mark during a race, the RC will move the existing mark or the finishing line.
- 12.2 The race committee may make minor adjustments to marks without signaling a change.

## 13 THE FINISH

The finishing line will be on the opposite (starboard) side of the signal boat between a staff displaying a blue flag on the signal boat and the course side of the mark or a staff displaying an orange flag on a race committee boat.

## 14 PENALTY SYSTEM

The Two-Turns Penalty is replaced by the One-Turn Penalty. This changes RRS 44.1.

## 15 TIME LIMITS AND TARGET TIMES

- 15.1 Time limits and target times are as follows:

Race Target Time	Race Time Limit	Mark A Time Limit
40 minutes	75 minutes	30 minutes

- 15.2 If no boat has passed Mark A within the Mark A time limit, the race will be abandoned.
- 15.3 Boats failing to finish within 20 minutes after the first boat sails the course and finishes will be scored Did Not Finish without a hearing. This changes RRS 35, A4 and A5.
- 15.4 Boats may be finished on the course at the discretion of the RC. The RC will determine the method and order of finishing. This changes RRS 35 and A4.

## 16 PROTESTS AND REQUESTS FOR REDRESS

- 16.1 Protest forms will be available near the official notice board. Protests and requests for redress or reopening shall be delivered there within the applicable time limit.
- 16.2 Competitors intending to protest are requested to notify the race committee as soon as practicable after finishing.
- 16.3 The protest time limit is 60 minutes after the RC signal boat has docked after the last race of the day.

## 17 SCORING

- 17.1 Four races are required to be completed to constitute a series.
- 17.2 When four or more races have been completed, a boat's series score will be the total of her race scores excluding her worst score.

## 18 SAFETY REGULATIONS [DP]

- 18.1 Boats shall check in by hailing their sail numbers to the RC signal boat before the start of the first race each day and following any postponement ashore.
- 18.2 A boat that retires from a race shall notify the RC as soon as possible.

## 19 RADIO COMMUNICATION [DP]

Competitors are strongly encouraged to carry personal VHF radios to monitor race committee communications. Except in an emergency, a boat that is racing shall not make voice or data transmissions and shall not receive voice or data communication that is not available to all boats. This restriction also applies to mobile telephones.

## 20 AWARDS

Awards will be presented at the Awards Ceremony after the conclusion of racing on the last day of the event.

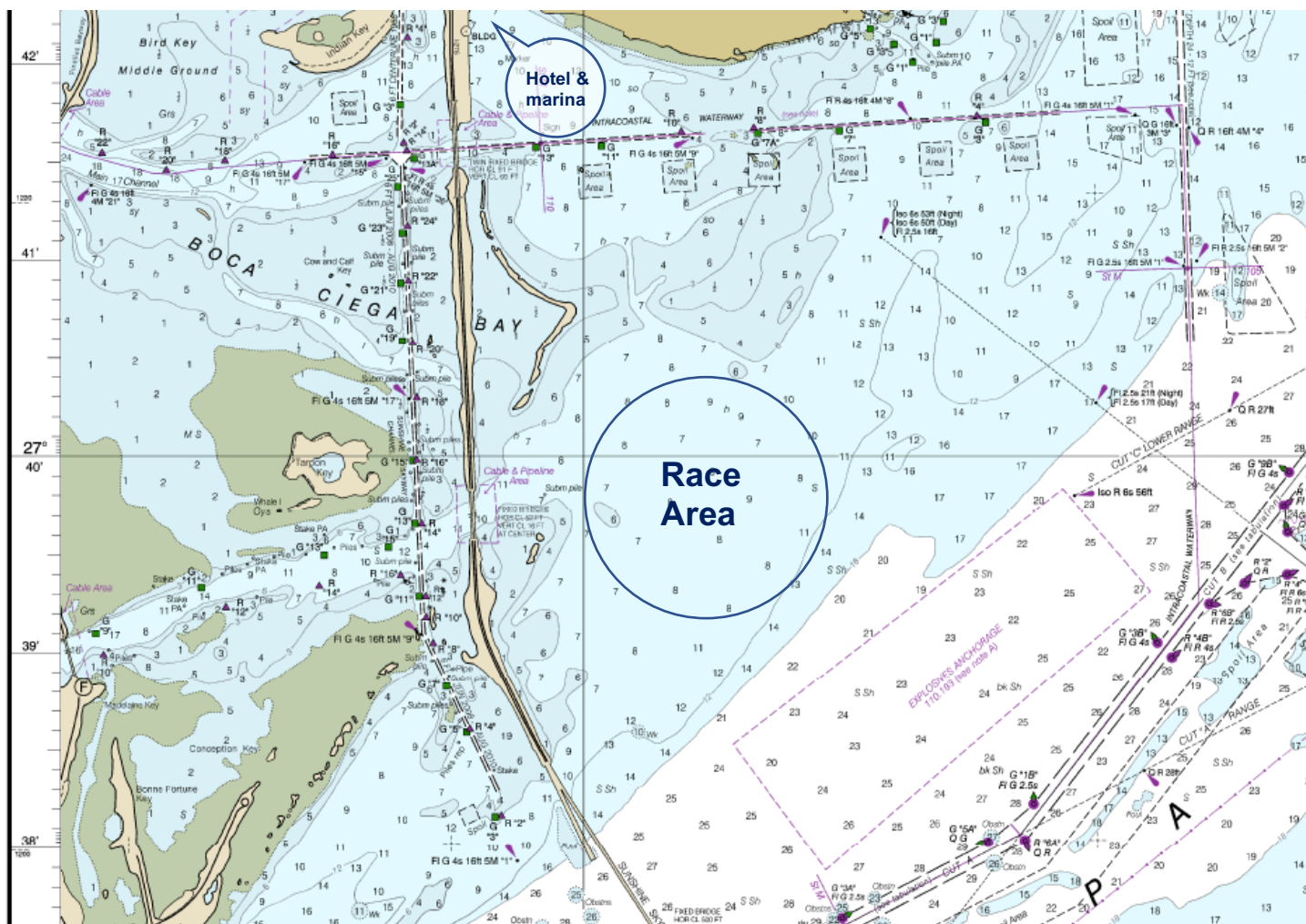
## 21 DISCLAIMER OF LIABILITY

Competitors participate in the regatta entirely at their own risk. See RRS 4, Decision to Race. It is the personal responsibility of each competitor to determine their level of safety. The organizing authority will not accept any liability for property damage, personal injury or death sustained in conjunction with, prior to, during, or after the regatta.

## 22 INSURANCE

Each participating boat shall be insured with valid third-party liability insurance with a minimum cover of \$100,000 US or the equivalent.

### ATTACHMENT A RACE AREA



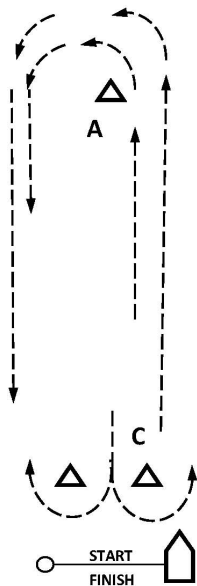
## ATTACHMENT B ILLUSTRATING THE COURSES

COURSE 1 and 2 DIAGRAM and ROUNDING ORDER (Not to Scale)

Course 1: START – A – C – A – FINISH  
(2 laps / 4 legs, downwind finish)

Course 2: START – A – C – A – C – A – FINISH  
(3 laps / 6 legs, downwind finish)

Mark C may be either a gate or a single mark

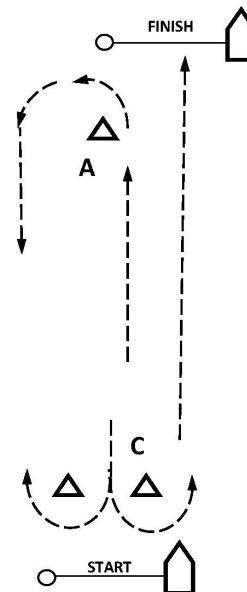


COURSE 5 and 6 DIAGRAM and ROUNDING ORDER (Not to Scale)

Course 5: START – A – C – FINISH  
(1 ½ laps / 3 legs, upwind finish)

Course 6: START – A – C – A – C – FINISH  
(2 ½ laps / 5 legs, upwind finish)

Mark C may be either a gate or a single mark



COURSE 3 and 7 DIAGRAM and ROUNDING ORDER (Not to Scale)

COURSE 3 - START – A – C – A – B – C – FINISH  
COURSE 7 - START – A – C – A – B – C – A – C – FINISH

