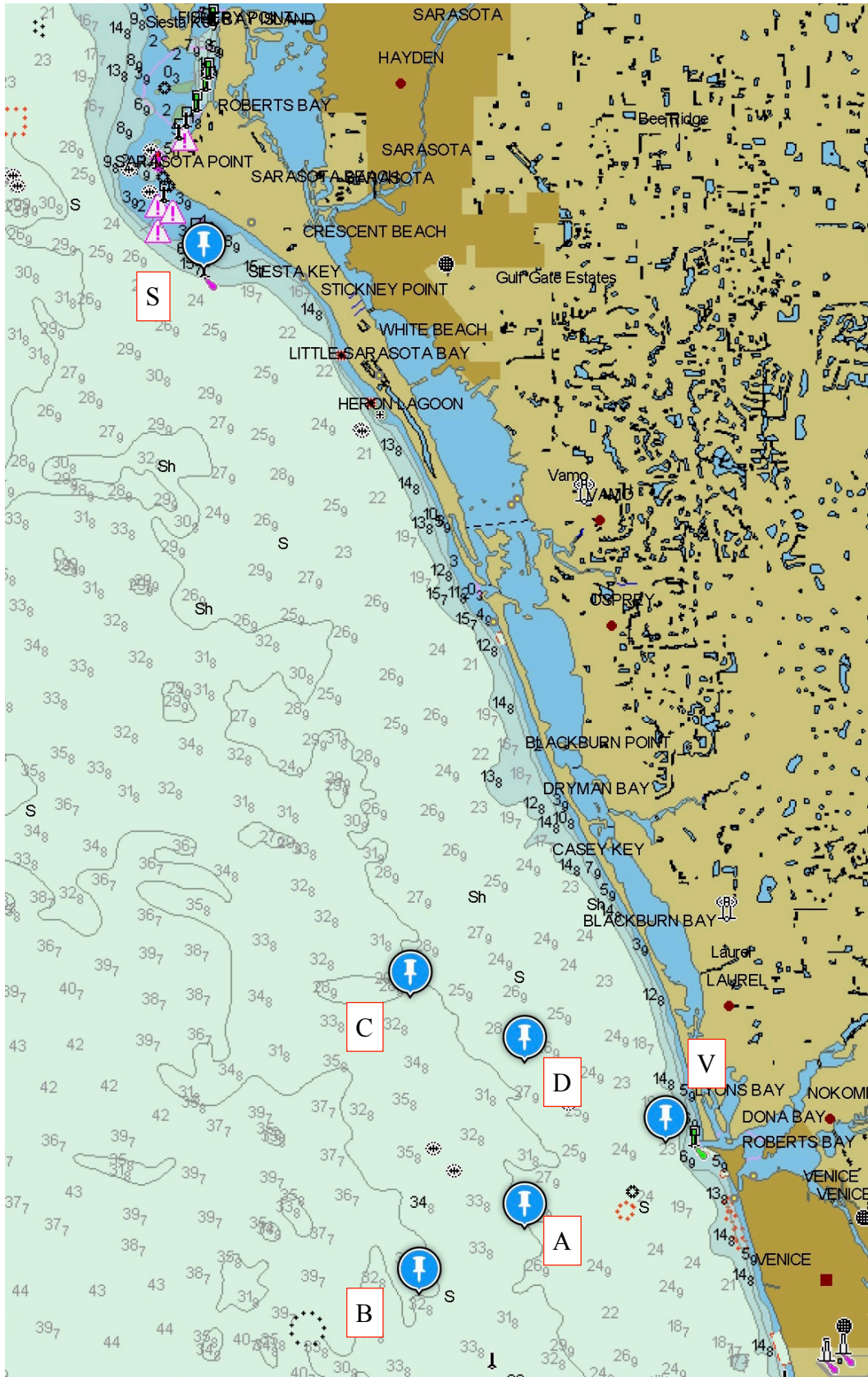


Appendix to Windjammer Sailing Instructions 2020



Race Courses:

<u>COURSE</u>	<u>MARKS</u>	<u>LENGTH (nm)</u>
#		
1	S to V (<i>Leave Marks to Port</i>)	10.0 nm
2	S to C to V (<i>Leave Marks to Port</i>)	10.6 nm
3	S to B to V (<i>Leave Marks to Port</i>)	13.9 nm
4	S to V to A to D to V (<i>Leave Marks to Stbd</i>)	15.1 nm
5	V to S (<i>Leave Marks to Stbd</i>)	10.0 nm
6	V to C to S (<i>Leave Marks to Stbd</i>)	10.6 nm
7	V to B to S (<i>Leave Marks to Stbd</i>)	13.9 nm
8	V to A to D to V to S (<i>Leave Marks to Stbd</i>)	15.1 nm

Odd numbered courses run **Clockwise**;

Even numbered courses run **Counter-Clockwise**

COURSE MARKS MATRIX; Bearing & Distance

(convert True to Mag by adding 5 deg.)

<u>TO</u> <u>FROM</u>	V	A	B	C	D	S	<u>LAT/</u> <u>LONG</u>
V		239° True 1.7 nm	239° True 2.9 nm	300° True 3.0 nm	299° True 1.7 nm	332° True 10.0 nm	27:06.7N 82:28.5W
A	059° True 1.7 nm		237° True 1.3 nm	333° True 2.6 nm	360° True 1.7 nm	341° True 10.0 nm	27:05.8N 82:30.1W
B	059° True 2.9 nm	057° True 1.3 nm		358° True 3.0 nm	025° True 2.6 nm	348° True 11.0 nm	27:05.1N 82:31.3W
C	120° True 3.0nm	153° True 2.6 nm	178° True 3.0 nm		120° True 1.3 nm	344° True 7.6 nm	27:08.2N 82:31.4W
D	119° True 1.7 nm	180° True 1.7 nm	205° True 2.6 nm	300° True 1.3 nm		338° True 8.7 nm	27:07.5N 82:30.1W
S	152° True 10.0 nm	161° True 10.0 nm	168° True 11.0 nm	164° True 7.6 nm	158° True 8.7 nm		27:15.6N 82:33.7W
LAT/ LONG	27:06.7N 82:28.5W	27:05.8N 82:30.1W	27:05.1N 82:31.3W	27:08.2N 82:31.4W	27:07.5N 82:30.1W	27:15.6N 82:33.7W	