

DP notation '[DP]' in a rule in the Sailing Instructions means that the penalty for a breach of that rule may, at the discretion of the protest committee, be less than disqualification.

1. **RULES** – The regatta will be governed by the rules as defined in *The Racing Rules of Sailing*.
2. **NOTICES TO COMPETITORS** – Notices to competitors will be posted on the Official Notice Board located near the Race Entry Room.
3. **CHANGES IN SAILING INSTRUCTION** – Any change to the sailing instructions will be posted at least one and one half (1-1/2) hours prior to the first warning signal on the day it will take effect.
4. **SIGNALS MADE ASHORE** – Signals made ashore will be displayed on the flagpole at ABYC.
5. **SCHEDULE OF RACES** – The notice of race establishes the times of warning signals. The race committee reserves the right to modify the schedule by either written or oral notices.
6. **ORDER OF STARTS** – The order of starts for the first race will be displayed near the Race Entry Room. The race committee may change the starting order of classes for subsequent races.
7. **CHECK IN** – Prior to the warning signal for the first race of her class in which a boat intends to compete each day, each boat shall sail past the stern of the Race Committee Signal Boat and hail her number and obtain the acknowledgment of the race committee.
8. **CLASS FLAGS** – Code flag W will be the class flag for ALL classes, with the starting class and next starting class indicated by placards displayed on the Race Committee Signal Boat. Times will be taken from the flags.
9. **COURSES**
 - 9.1 The racing area, courses and description of marks are listed on the reverse side. The starting class and the selected course number for that class will be displayed on the Race Committee Signal Boat.
 - 9.2 The race committee may replace the gate with a leeward mark without notification to the competitors. In this case, it shall be rounded to port.

10. THE START

- 10.1 Races will be started in accordance with RRS 26 with the Warning signal given three (3) minutes before the starting signal. The Preparatory signal will be given two

(2) minutes before the Starting signal. This changes RRS 26.

- 10.2 The starting line will be between a staff displaying a orange flag on a race committee boat and a staff displaying a orange flag on the starting mark.
- 10.3 At the discretion of the race committee, the starting line may be located on the starboard side of the Race Committee Signal Boat or may be combined with the finishing line on the port side of the Race Committee Signal Boat, as shown in the diagram below.
- 10.4 The race committee may attempt to hail OCS boats. Failure of the committee to make the attempt or for the competitor to hear the hail will not be grounds for redress. This changes RRS 62.1.
11. **CHANGE OF THE NEXT LEG OF THE COURSE** – To change the next leg of the course, the race committee will lay a new mark (or move the finishing line) and remove the original mark as soon as practicable. New Marks will be a different color. When in a subsequent change a new mark is replaced, it will be replaced with an original mark.
12. **THE FINISH** – The finishing line will be between a staff displaying a orange flag on the Committee Vessel and a staff displaying a orange flag on the finishing mark. When finishing downwind and mark G is located to weather of the finish line and it is the last mark of the course, it shall have no required side.
13. **PENALTY SYSTEM** -RRS 44.1 is changed as described in US Sailing Prescription Appendix V1, Penalty at the Time of an Incident.
14. **PROTESTS AND REQUESTS FOR REDRESS**
 - 14.1 Informing the Race Committee (RC) In addition to meeting the requirements of rule 61.1, a boat intending to protest another boat concerning an incident in the racing area that she is involved in or sees shall, at the first reasonable opportunity after she finishes, notify the RC finish boat of her intent to protest and the sail number of the boat(s) she is protesting
 - 14.2 Protest forms are available at the Protest Office. Protests and requests for redress shall be delivered there within one-half (1/2) hour of the Race Committee Signal Boat's reaching the dock. Protests will be heard as soon as practicable and in the approximate order in which they are received. Notices will be posted on the Protest Notice Board located near the Race Entry Room to

inform competitors that they are parties to a protest or request for redress hearing. This will constitute official notice to all parties under RRS 63.2.

- 14.3 If the race committee posts a list of boats scored OCS, ZFP, UFD or BFD on the official score board before the protest time limit, a request for redress based on such a posted score shall be made no later than one half hour after this posting. This changes RRS 62.2.

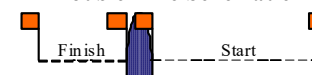
15. SCORING

- 15.1 When fewer than five races have been completed, a boat's series score will be the total of her race scores.

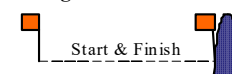
16. SAFETY REGULATIONS

- 16.1 A boat that retires from a race shall notify the race committee as soon as possible. Boats leaving the racing area prior to the end of the day's racing are requested to notify a Race Committee Boat, or if that is not possible notify a regatta official or the yacht club office immediately upon arrival ashore. Every boat racing shall have a painter suitable for towing, at least one boat length long. [DP]
- 16.2 The centerline "Keep Right" buoys from the edge of the Alamitos Bay Yacht Club basin to the end of the Alamitos Bay jetty (including A mark at the end of the jetty) are a continuous obstruction. Boats entering or leaving Alamitos Bay must take these buoys to port. Boats crossing the center buoy line are subject to protest. [DP]
17. **DISCLAIMER OF LIABILITY** – Competitors participate in the regatta entirely at their own risk. See rule 4, Decision to Race. The organizing authority will not accept any liability for material damage or personal injury or death sustained in conjunction with or prior to, during, or after the regatta.

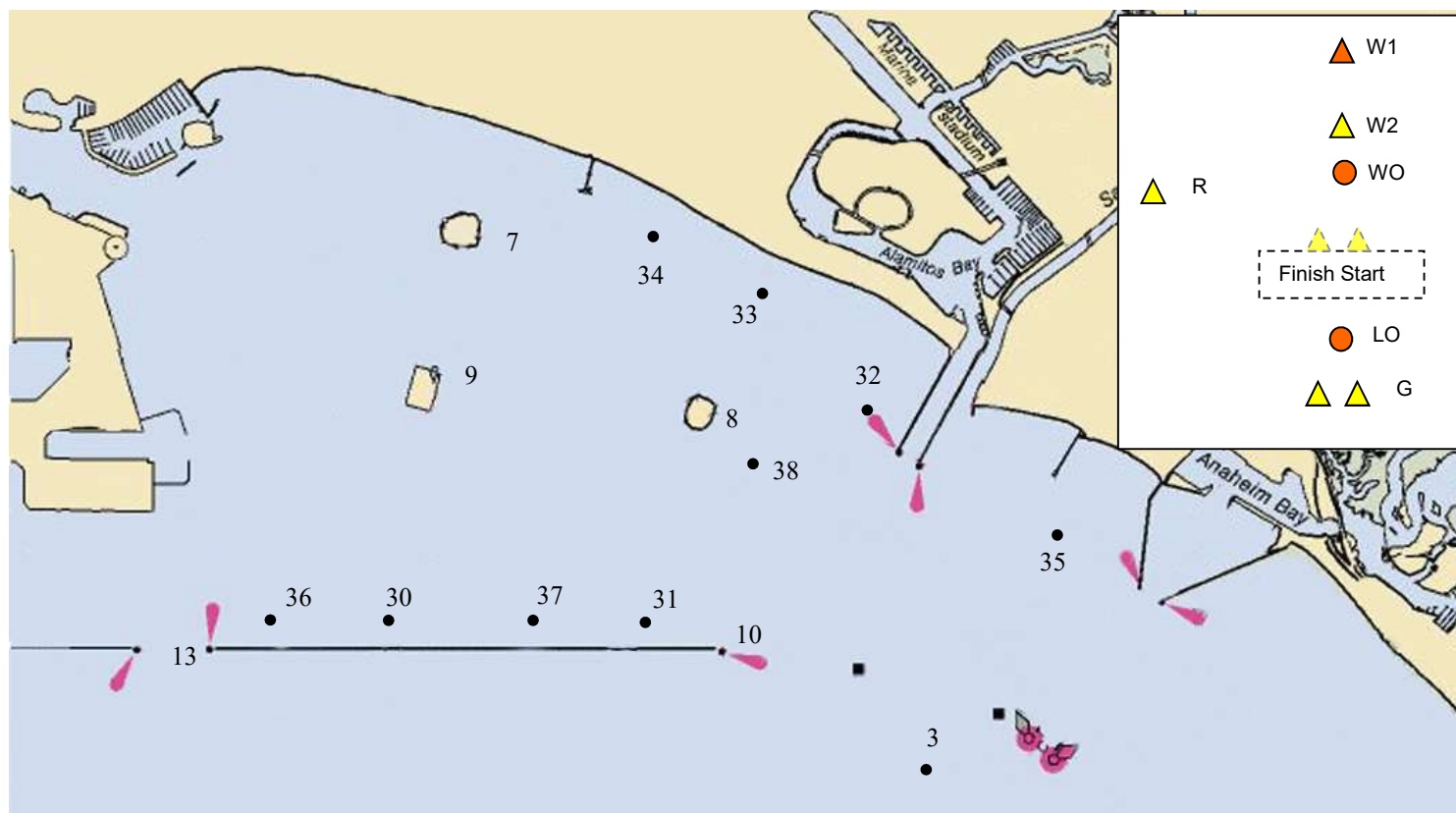
Double Line Schematic



Single Line Schematic



| | | |
|---|----------------|---------------------------------------|
|  | AP | Race Postponed |
|  | A | Under AP or N, no more racing today |
|  | C | Change of course |
|  | H | Under AP or N, further signals ashore |
|  | I | Round an End rule |
|  | L | Come within hail |
|  | M | Missing Mark |
|  | N | Race Abandoned |
|  | P | Preparatory |
|  | S | Shorten course |
|  | U | Rule 30.3 |
|  | W | Class Flag (warning) |
|  | X | Individual Recall |
|  | Y | Lifejackets |
|  | Z | 20% penalty rule |
|  | 1st Sub | General Recall |



W1 Orange tetrahedron shape.

W2 Yellow tetrahedron shape.

WO Round shape.

G Two yellow tetrahedron shapes to leeward of starting area, OR to weather of the starting area.

LO Round shape located to leeward of starting area.

R Inflatable shape located on the port side of the course approximately in the location of a reaching or jibing mark.

NOTE: Marks W1 and W2 may be set the same distance from the start.

NOTE: New Marks, as defined in SI 11, will be different colors.

3 Chevron oil platform Esther bearing 090° magnetic 1.2 miles from the east end of the Long Beach breakwater.

10 East end of Long Beach breakwater.

13 West end of Long Beach breakwater.

30-38 fixed buoys located approximately as shown on the chart.

All marks rounded to PORT unless specified STARBOARD by an "s", or a gate mark. Distances in *italics* are estimates; actual distance will be determined by R.C.

| No. | Course | Distance |
|-----|-------------------------|----------|
| 1 | W1-G-Finish | 2.50 |
| 2 | W1-G-W1-G-Finish | 5.00 |
| 3 | W1-G-W1-G-W1-G-Finish | 7.50 |
| 4 | W1-R-G-Finish | 3.50 |
| 5 | W1-R-G-W1-G-Finish | 5.35 |
| 6 | W1-G-W1-R-G-W1-G-Finish | 7.85 |
| 7 | W2-G-Finish | 2.00 |
| 8 | W2-G-W2-G-Finish | 4.00 |
| 9 | W2-G-W2-G-W2-G-Finish | 6.00 |
| 10 | W2-R-G-Finish | 3.00 |
| 11 | W2-R-G-W2-G-Finish | 4.40 |
| 12 | W2-G-W2-R-G-W2-G-Finish | 6.40 |
| 13 | W1-G-W2-G-Finish | 4.50 |
| 15 | W1 -G-W1-Finish | 4.50 |
| 16 | W1-G-W1-G-W1-Finish | 7.00 |
| 19 | W2-G-W2-Finish | 3.50 |
| 20 | W2-G-W2-G-W2-Finish | 5.50 |
| 21 | WO-L0-Finish | 1.50 |

| No. | Course | Distance |
|-----|-------------------------------------|----------|
| 22 | WO-L0-W0-L0-Finish | 3.00 |
| 23 | WO-L0-WO-Finish | 2.50 |
| 24 | 30-33-Finish | 4.26 |
| 25 | 30-34-Finish | 4.16 |
| 26 | 37-G-Finish | 2.28 |
| 27 | 37-33-Finish | 3.70 |
| 28 | 37-34-Finish | 3.71 |
| 29 | 31-G-Finish | 2.82 |
| 30 | 31-34-Finish | 3.58 |
| 31 | 13-10-34-Finish | 6.62 |
| 32 | Course signaled from RC signal boat | |