



THE MARIN YACHT CLUB

John Samuels

CAPTAIN FAST RACE

NOVEMBER 8, 2020

SAILING INSTRUCTIONS

Organizing Authority: The Marin Yacht Club, San Rafael, California

1 RULES

- 1.1 The regatta will be governed by the 'rules' as defined in *The Racing Rules of Sailing* (RRS).
- 1.2 Boats shall carry all safety and emergency equipment required by the YRA (for in the Bay races) and the US Coast Guard, including running lights. The race committee may file a protest against any boat observed in violation of these requirements.
- 1.3 Rule 40 is changed as follows: **All** competitors shall wear personal flotation devices while racing, except briefly while changing or adjusting clothing or personal equipment. Flag Y will not be displayed.

2 NOTICES TO COMPETITORS

Notices to competitors will be emailed to all competitors. The NOR, SIs, and amendments thereto will be emailed to all competitors.

3 CHANGES TO SAILING INSTRUCTIONS

Any changes to the Sailing Instructions will be made by 1700 hours on November 6th and emailed to all competitors.

4 SCHEDULE

- 4.1 Starting times will be emailed to all competitors by 1700 on November 6th.
- 4.2 No Skippers' Meeting will be held because of the early start time.
- 4.3 On Sunday, November 8th, the first warning signal will be at **1155** with the first start at **1200**. Subsequent starts will be at the times posted in Appendix B.

5 HANDICAPS

Handicaps will be developed by the MYC race committee as follows:

- a. Boats which have a current NCPHRF certificate or BAMA rating shall receive that rating. Multihulls will be scored separately from monohulls.
- b. One-design boats shall receive their one-design class NCPHRF base rating.
- c. All other boats will receive NCPHRF ratings assigned by the race committee. Assigned ratings

shall not be subject to redress.

6 CLASSES AND CLASS FLAGS

There will be one class: Non-spinnaker. No class flags will be flown.

7 THE COURSE

The course will be one of the three courses described in the Sailing Instructions. The course will be determined from the conditions on the day of the race and announced by the Race Committee on VHF channel 71 before the start.

8 THE START

8.1 The starting line is a line from a Yellow Flag on the Race Committee Boat to an inflatable Mark.

8.2 The race will be started using rule 26, except that there will be no visual signals. The start times will be emailed to all competitors by 1700 on November 8th.

8.4 Boats shall start in accordance with individual handicaps beginning at 12:00 hours. The race committee signal boat will provide your starting time upon request prior to 11:55. However it is each boat's responsibility to start at the proper time. A standard 5 minute start sequence shall be observed with the following signals:

11:55 Warning Signal
11:56 Preparatory Signal
11:59 One minute Warning Signal
12:00 Start Signal

A signal will be sounded for each subsequent start.

8.5 Boats observed OCS will be signaled by 2 short signals and required to restart following rule 29.1.

8.6 Boats who are not starting or who are restarting should keep clear of the start line and the boats who are starting at their scheduled time.

8.7 Propulsion may be used **until 1 minute before** each boat's starting time.

9 THE FINISH

The finishing line will be the same as the starting line.

10 TIME LIMIT

10.1 The time limit for the race shall be 1630 hours, Sunday, November 8th. Boats failing to finish by this time will be scored DNF.

10.2 Boats not completing the course shall report to the Race Committee as soon as possible and no later than 1630 hours on November 8th. The race committee will monitor USA VHF channel 71. In an emergency, the race committee will be available by cell phone at 415-298-6211.

11 PROTESTS

11.1 Protests shall be written on US Sailing Protest forms available from the Racing Chair and lodged with her no later than 1800 hours on November 8th.

11.2 Protests will be heard, in the approximate order of submission, at The Marin Yacht Club at a time and date to be determined.

12 SCORING

Starting times are calculated based on handicaps; therefore, finish places will be determined by the order in which the boats cross the finishing line within the time limit.

13 RADIO COMMUNICATION

13.1 The race committee may use VHF USA channel 71 to communicate information about the races.

13.2 Except in an emergency or retiring from a race, a boat that is racing shall not make voice or data transmissions and shall not receive voice or data communications that is not available to all boats.

14 TROPHIES

No trophies will be awarded this year in compliance with Marin County HHS restrictions on gatherings

15 DISCLAIMER OF LIABILITY

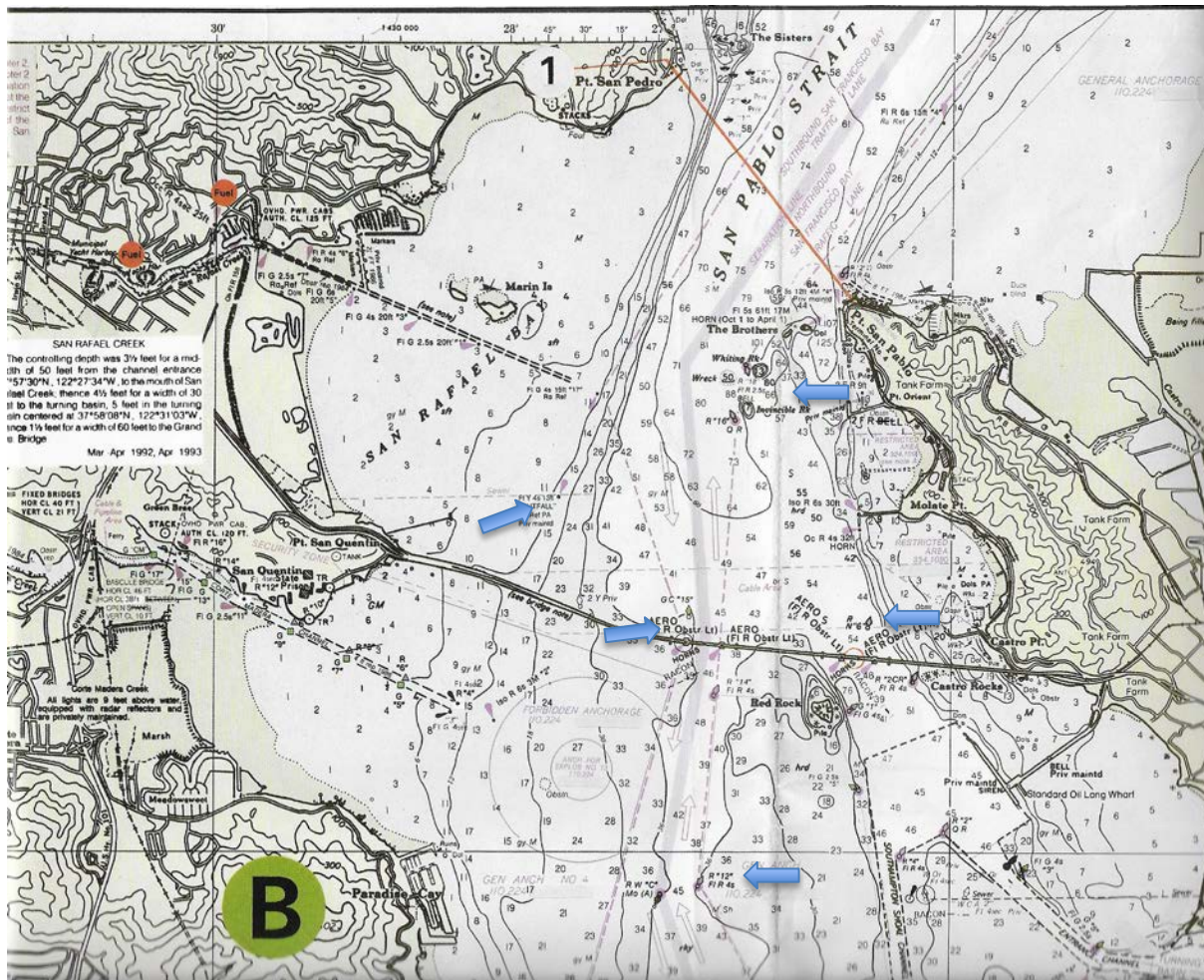
Competitors participate in the regatta entirely at their own risk. See rule 4, Decision to Race. The organizing authority will not accept any liability for material damage or personal injury or death, sustained in conjunction with, prior to, during or after the regatta.

16 FURTHER INFORMATION

Madeline Morey, mmorey@marintrees.com, 415-298-6211

APPENDIX A: COURSES AND MARKS

Course 1 (4.4 NM):	ST, M15-P, M18-P, M15-S, FN
Course 2 (5.7 NM):	ST, M15-P, M6-P, M18-P, M15-S, FN
Course 3 (6.8 NM):	ST, M15-P, M6-P, M18-P, M15-P, M16-P, FN
Course 4 (8.3 NM):	ST, M15-S, M12-P, M18-P, M15-P, M16-P, FN



Marks:

- ST – Start Line as defined (near the mark shown as Outfall)
- M6 – Red Buoy 6
- M12 – Red Buoy 12 (south of the Richmond-San Rafael Bridge)
- M15 – Green Buoy 15
- M16 – Red Buoy 16
- M18 – Red Buoy 18
- FN – Finish Line as defined

APPENDIX B: COMPETITORS AND START TIMES

NON-SPINNAKER

Sail #	Skipper	Boat Name	PHRF	Course 1	Course 2	Course 3
Isl 28	Bleiz Larzul	Petit Bateau	201	12:00:00	12:00:00	12:00:00
2669	Jose Luis Bethencourt	Second Draft	198	12:00:13	12:00:17	12:00:21
J 9	Ron Witzel	HARPOEN	183	12:01:19	12:01:43	12:02:03
7507	Val Clayton	Gypsy Lady	174	12:01:58	12:02:34	12:03:04
406	Paul Descalso	Sobrante	168	12:02:25	12:03:08	12:03:45
H35	Ellen Clark	Charisma	138	12:04:37	12:05:59	12:07:09
N/A	Michael Okoniewski	Two Turkies	132	12:05:03	12:06:34	12:07:49
45	Aidan Collins	Bella	123	12:05:43	12:07:25	12:08:51