

2020 Heald Bank Regatta

June 27 – 28, 2020

Organizing Authority: Bay Access Sailing Foundation
Hosted by Lakewood Yacht Club
2322 Lakewood Yacht Club Drive
Seabrook, TX 77586

SAILING INSTRUCTIONS

The notation '[DP]' in a rule in the Sailing Instructions (SI) means that the penalty for a breach of a rule may, at the discretion of the protest committee, be less than disqualification.

1. RULES

- 1.1 The regatta will be governed by the rules as defined in The Racing Rules of Sailing (RRS).
- 1.2 Between dusk and dawn the rules of Part 2 of the RRS (When Boats Meet) are replaced by the International Regulations for Preventing Collisions at Sea 1972 (COLREGs).
- 1.3 Racing Rules are changed as follows:
 - 1.3.1 SI 8.2 changes RRS 32.
 - 1.3.2 SI 8.3 changes RRS 33
 - 1.3.3 SI 11.4 changes RRS A4 & A5
 - 1.3.4 SI 14.1 changes RRS 44.1
 - 1.3.5 SI 15.2 changes RRS 35, A4 and A5
 - 1.3.6 SI 16.7 changes RRS 62
 - 1.3.7 SI 18.4 changes RRS 42. (Motoring to avoid Interfering with Commercial Traffic)
 - 1.3.8 SI 18.5 changes RRS A5 and 63.1. (Disqualification for Interfering with Commercial Traffic)

2. NOTICES TO COMPETITORS

- 2.1 Notices to competitors will be posted on the official notice board located online on the NEWSROOM & RESULTS MENU. [Notice Board](#)

3. CHANGES TO SAILING INSTRUCTIONS

- 3.1 Any written change to the sailing instructions will be posted before 0900 hours on the day it will take effect, except that any change to the schedule of races will be posted by 2000 hours on the day before it will take effect.
- 3.2 Oral changes to the sailing instructions may be given on the water by hail on VHF channel 72 in accordance with RRS 90.2(c).

4. SIGNALS MADE ASHORE

- 4.1 Signals made ashore will be displayed online on the Regatta Network page [Notice Board](#).

Sailing Instructions

4.2 When flag AP is displayed on the beach in Galveston, “1 minute” is replaced with “not less than 2 hours” in the race signal AP.

4.3 Other signals will be displayed ashore in Galveston, and they will have their normal meaning as if being made from a race committee signal boat.

5. SCHEDULE OF RACES

5.1 Dates of racing:

Saturday, June 27th - Sunday, June 28th, 2020

5.2 Number of races: 1

5.3 The scheduled time for the warning signal for the first race is:

Spinnaker	Non-Spinnaker
no earlier than 1215	no earlier than 1200

6. CLASS FLAGS and GROUP FLAGS

6.1 Class Flags will be:

<i>Class</i>	<i>Flag</i>
Cruising Classic Canvas	Yellow
Multihull	Brown
PHRF Non-Spinnaker	Green
Cruising Spinnaker	Purple
ORC	Pink

7. RACING AREAS

7.1 Attachment 1 shows the location of the racing area.

8. THE COURSES

8.1 The diagrams in Attachment 2 show the courses, including the approximate angles between legs, the order in which marks are to be passed, and the side on which each mark is to be left.

8.2 Courses will not be shortened. This changes RRS 32.

8.3 Legs of the course will not be changed after the preparatory signal. This changes RRS 33.

9. MARKS

9.1 Starting and Finishing Marks will be Houston Ship Channel Mark 11 (HSC11), G “11” Fl G 2.5s and an orange flag on a staff located on the shore of Galveston Island to the south.

9.2 Rounding Mark locations are listed in a table in Attachment 1.

9.3 Available photographs of certain marks are attached to these sailing instructions in Attachment 3

9.4 In the event a mark is missing, boats shall round the GPS coordinates provided.

10. AREAS THAT ARE OBSTRUCTIONS

N/A

11. THE START

11.1 Races will be started by using RRS 26.

11.2 The Starting Line is a line between Galveston Channel Green Marker #11 and a staff displaying an orange flag located on the southern shoreline, approximately 1,100 yards distance, and at a bearing of approximately 205 degrees (Magnetic) from HSC Green Marker #11. **CAUTION: Boats are advised to stay well clear of the shoreline to avoid shoal water!**

11.3 Boats whose warning signal has not been made shall avoid the starting area during the starting sequence for other races. [DP]

11.4 A boat that does not start within 60 minutes after her starting signal will be scored Did Not Start without a hearing. This changes RRS A4 and A5.

12. CHANGE OF THE NEXT LEG OF THE COURSE

N/A

13. THE FINISH

13.1 The finishing line will be a line between Galveston Channel Green Marker #11 and a staff displaying an orange flag located on the southern shoreline, approximately 1,100 yards distance, and at a bearing of approximately 205 degrees (Magnetic) from HSC Green Marker #11. **Caution: Boats are advised to stay well clear of the shoreline to avoid shoal water!**

13.2 Boats shall attempt to hail the Race Committee on VHF Channel 72 when passing Galveston Channel Marker 5A, identifying the boat by name and sail number.

13.3 Boats shall attempt hail the Race Committee again on VHF Channel 72 when preparing to cross the finishing line, identifying the boat by name and sail number. Boats crossing the finish line at night shall display a light on their mainsail number.

13.4 If the Race Committee is absent or does not acknowledge when a boat finishes, she shall record her finish time as follows: Finish time shall be marked when Galveston Channel Marker Green Marker #11 is at a compass bearing of 025 degrees (Magnetic) from the vessel's helm. GPS time shall be used. She shall report her finishing time and her position in

relation to any nearby boats to the race committee at the first reasonable opportunity. This may be done by contacting the PRO David Comeaux no later than 1500 hours, Sunday June 28, 2020. The information will be transmitted by email (davidcomeaux@live.com) or by text or voice recording to his mobile phone at (832) 993-5933.

14. PENALTY SYSTEM

14.1 For the PHRF Cruising Classic Canvas non-spin class, RRS 44.1 is changed so that the One-Turn Penalty replaces the Two-Turns Penalty.

14.2 A boat that takes any penalty under RRS 44.2 shall notify the Race Committee at the first reasonable opportunity after finishing, identifying the location, time, and name of any other boat involved in the incident. Racers are reminded of rule 44.1.b (“if the boat caused injury or serious damage or, despite taking a penalty, gained a significant advantage in the race or series by her breach, her penalty shall be to retire”).

15. TIME LIMITS AND TARGET TIMES

15.1 Time limits and target times are as follows:

<i>Time limit</i>	<i>Target time</i>
<i>24 hours after start</i>	<i>17-18 hours after start</i>

15.2 Boats failing to finish within the time limit will be scored Did Not Finish without a hearing. This changes RRS 35, A4 and A5.

15.3 Failure to meet the target time will not be grounds for redress.

16. PROTESTS AND REQUESTS FOR REDRESS

16.1 Boats intending to file a protest shall inform the race committee via VHF channel 72 within 10 minutes of that boat’s finishing time.

16.2 Protest forms are available through US Sailing [link](#). Protests and requests for redress or reopening shall be delivered electronically within the appropriate time limit.

16.3 The protest time limit is June 28th, 2020 1700.

16.4 Notices of scheduled hearing times and locations will be posted within thirty (30) minutes of the expiration of the protest time limit to inform competitors of hearings in which they are parties or named as witnesses.

16.5 Notices of protests by the race committee or protest committee will be posted to inform boats under RRS 61.1(b).

16.6 N/A

16.7 A request for redress based on a protest committee decision shall be delivered no later than 30 minutes after the decision was posted. This changes RRS 62.

17. SCORING

17.1 Boats in ORC Class will be scored using time-on-time (TOT) scoring. Other boats will be scored using TOD scoring.

18. SAFETY REGULATIONS-OFFSHORE RACE ONLY

18.1 Check In – Offshore Boats shall check in with the Race Committee on VHF Channel 72 after 1100 on the day the race begins and prior to the warning signal for their class start. Boats checking in shall report the number of individuals aboard. [DP]

18.2 A boat retiring from the race shall notify the Race Committee at the earliest opportunity, **and then again** when passing the finish line on returning to port. In both cases, retiring boats shall first attempt to notify the Race Committee via VHF Channel 72. Failing that, a retiring boat shall attempt to notify a competitor on the course for subsequent relay to the Race Committee. A retiring Offshore boat shall also notify the Principal Race Officer, David Comeaux at cell number (832) 993-5933 no later than June 28th 2020 at 1200 hours. [DP]

18.3 A boat's failure to check in is not subject to protest by another boat.

18.4 If a skipper determines that it is necessary to use the boat's motor to maneuver in order to avoid interfering with a ship's safe passage, he may do so. However, when motoring, the boat may not advance position, and may only use the motoring for clearing the ship passage lane. Once cleared, the boat shall immediately cease motoring. This changes RRS 42. As soon as practical, the skipper shall advise the Race Committee of any action taken in accordance with this rule.

18.5 **Interfering With Commercial Traffic:** A boat is subject to immediate disqualification, without a hearing, if the Race Committee receives a report from a disinterested party that the boat interfered with commercial traffic while transiting to the race area, while *racing*, or while transiting to her mooring after *finishing*. This changes RRS A5 and 63.1.

19. REPLACEMENT OF CREW OR EQUIPMENT-OFFSHORE RACE ONLY

19.1 Substitution of competitors after the skippers' meeting will not be allowed without prior written approval of the race committee [DP]

20. EQUIPMENT AND MEASUREMENT CHECKS

N/A

21. EVENT ADVERTISING

Competitor advertising will be restricted as follows: As a courtesy to our valued race sponsors, no advertising may be displayed on Lakewood Yacht Club premises without prior written permission of the Race Committee. [DP]

22. OFFICIAL BOATS

N/A

23. SUPPORT BOATS

N/A

24. TRASH DISPOSAL

Trash shall be disposed of in accordance with applicable laws.

25. HAUL-OUT RESTRICTIONS

N/A

26. DIVING EQUIPMENT AND PLASTIC POOLS

N/A

27. RADIO COMMUNICATION

The Race Committee will use VHF Channel 72 to communicate with racers, including the starting sequence. Except when communicating with the Race Committee on VHF Channel 72 as provided for in these Sailing Instructions, all boats should monitor VHF Channel 16 and, when in or near the Houston Ship Channel, VHF Channel 13.

28. PRIZES

28.1 Prizes, will be given as follows:

28.1.1 One trophy: classes with three boats.

28.1.2 Two trophies: classes with four or five boats

28.1.3 Three trophies: classes with six to eight boats

28.1.4 The name of overall class winner in the Offshore Spinnaker class will be engraved on the Old Winch Trophy.

28.1.5 The name of overall class winner in the Offshore non-spinnaker classes will be engraved on the Navigator Trophy.

28.2 The RC may award additional prizes at their discretion

29. DISCLAIMER OF LIABILITY

Competitors participate in the regatta entirely at their own risk. See RRS 4, Decision to Race. The organizing authority will not accept any liability for material damage or personal injury or death sustained in conjunction with or prior to, during, or after the regatta.

30. INSURANCE

Each participating boat shall be insured with valid third-party liability insurance with a minimum cover of \$300,000 per incident or the equivalent.

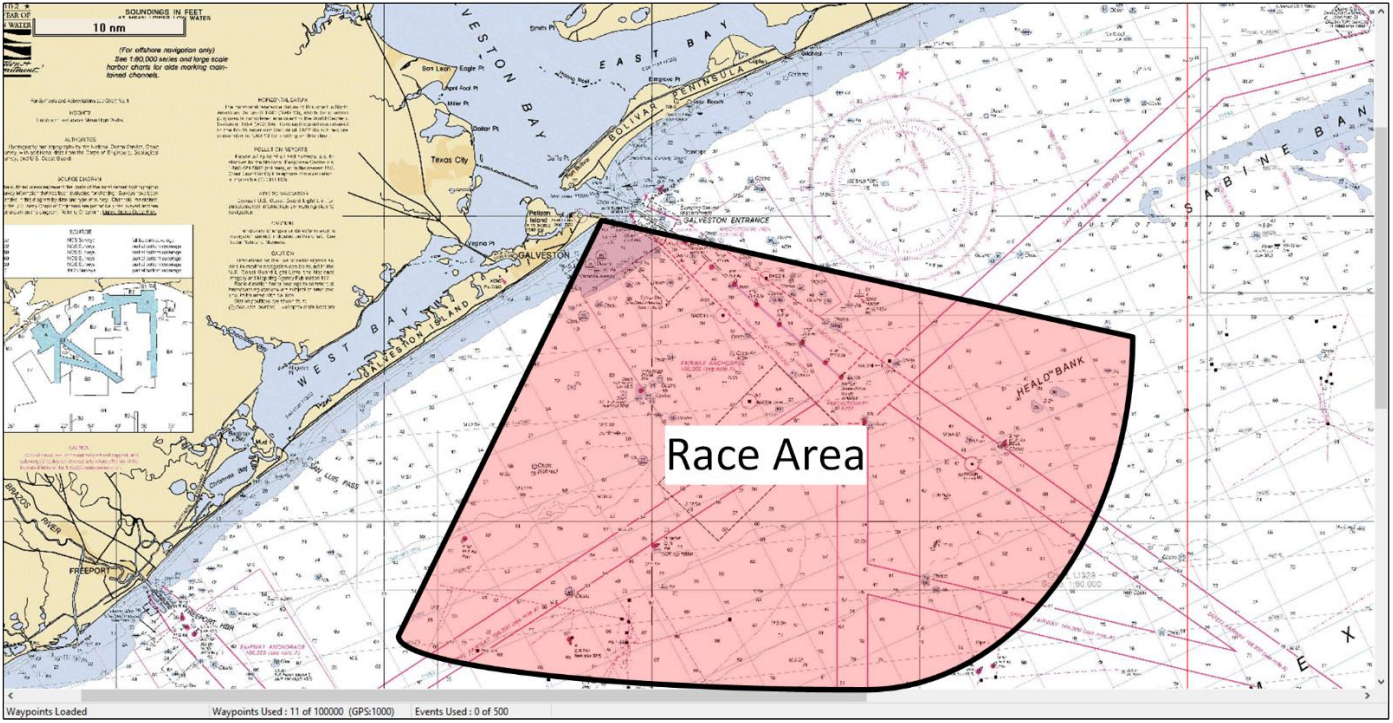
31. ATTACHMENTS

31.1 Attachment 1: Race Area & Mark Locations

31.2 Attachment 2: Courses

Attachment 3 Available Mark Photos



Race Area





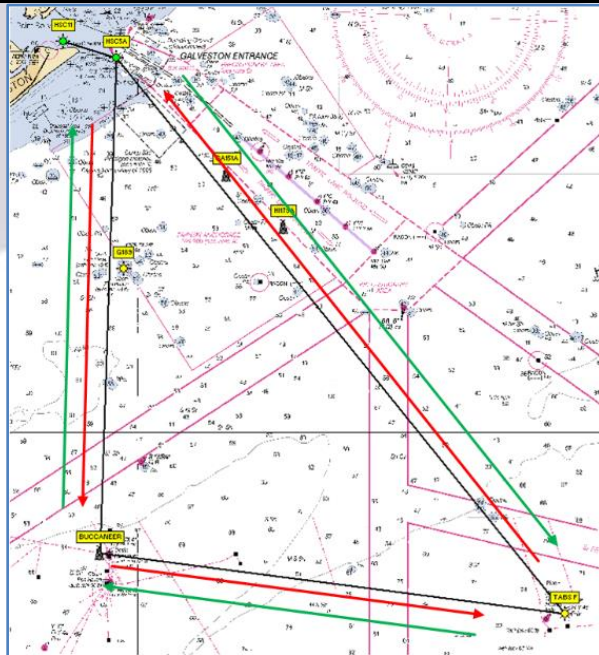
Offshore Mark Locations

Designation	Latitude	Longitude
HSC 11 (G "11" Fl G 2.5s)	29° 20.530'N	094° 44.470'W
HSC 5A (Iso G 6s 30ft 6M "5A" Ra Ref)	29° 19.642'N	094° 41.275'W
HI 179A (Platform)	29° 10.800'N	094° 31.260'W
Mitchell's Reef (Y "FR-TX-25" Fl Y 6s Priv)	29° 08.589'N	094° 40.820'W
Buccaneer Rig	28° 53.648'N	094° 42.263'W
TABS B (Y "B" Y 4s Priv)	28° 58.907'N	094° 53.976'W
TABS F (Y "F" Y 4s Priv)	28° 50.482'N	094° 14.467'W

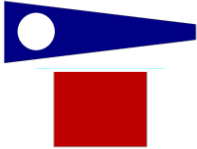
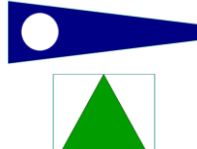
Attachment 2 Offshore Courses

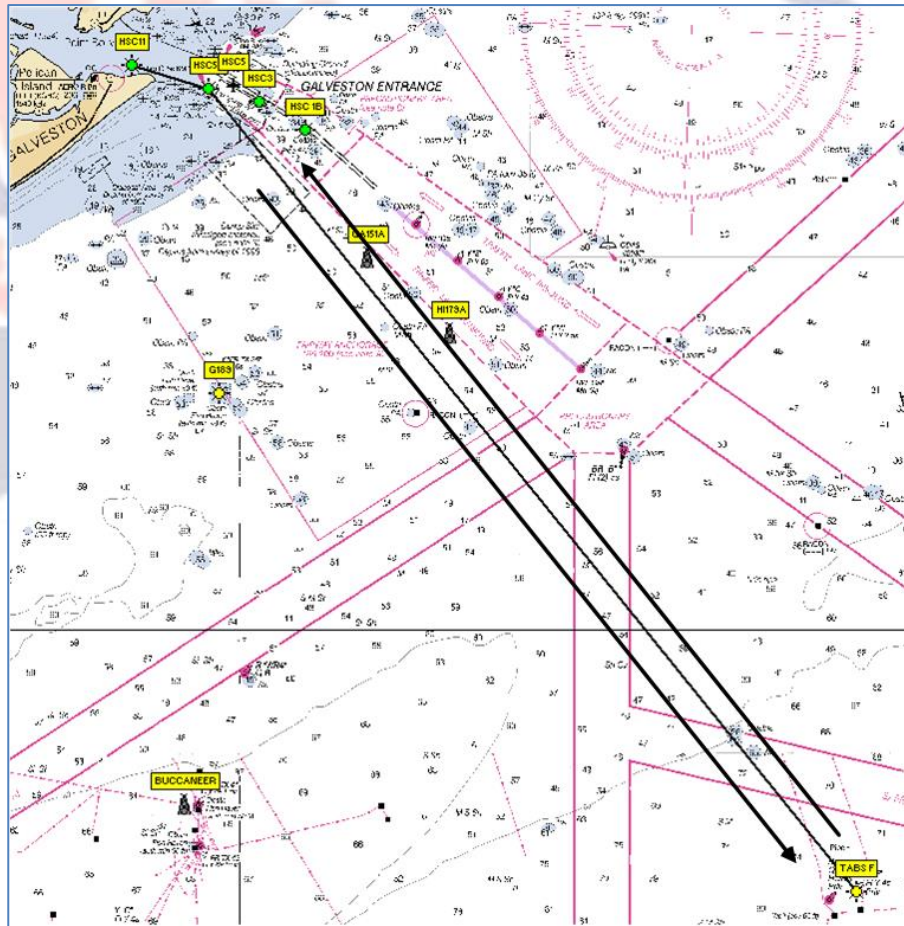
Course	"1 Red"				
	Leave to:	Bearing (Magnetic)	Leg distance(NM)	Accumulated distance(NM)	
Start(HSC 11)	Port				
HSC 5A	Starboard	105	2.93	2.93	
Buccaneer	Port	180	25.92	28.84	
TABS F	Port	95	24.58	53.43	
HSC 5A	Port	319	37.35	90.78	
Finish (HSC 11)	Starboard	285	2.93	93.71	

Course	"1 Green"				
	Leave to:	Bearing (Magnetic)	Leg distance(NM)	Accumulated distance(NM)	
Start(HSC 11)	Port				
HSC 5A	Starboard	105	2.93	2.93	
TABS F	Starboard	139	37.35	40.28	
Buccaneer	Starboard	275	24.58	64.86	
HSC 5A	Port	360	25.92	90.78	
Finish (HSC 11)	Starboard	285	2.93	93.71	

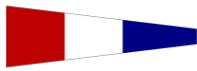





Attachment 2 Offshore Courses

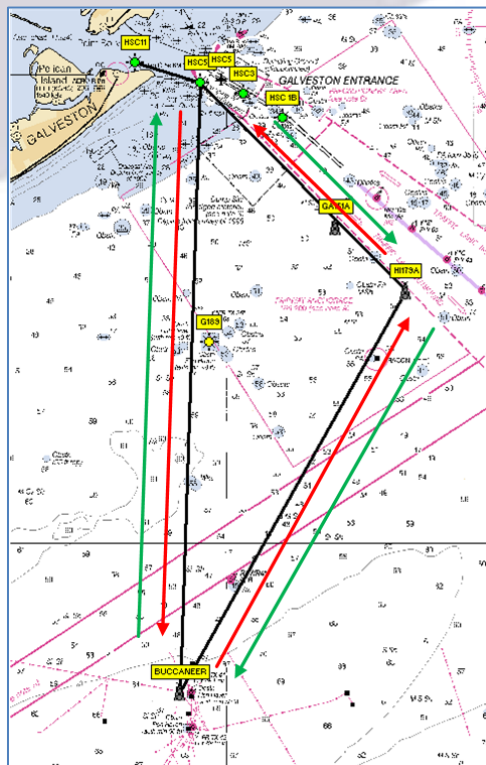
Course	“2 Red”		“2 Green”		Bearing (Magnetic)	Leg Distance(NM)	Total Distance(NM)
			Leave to:	Leave to:			
Start (HSC 11)	Port	Port	--	--	--	--	--
HSC 5A	Starboard	Starboard	105	2.93	2.93		
TABS F	Port	Starboard	139	37.35	40.28		
HSC 5A	Port	Port	319	37.35	77.63		
Finish (HSC 11)	Starboard	Starboard	285	2.93	80.56		




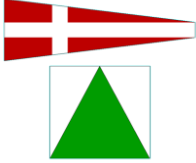
Attachment 2 Offshore Courses

Course	"3 Red"			
	Leave to:	Bearing(Magnetic)	Leg distance(NM)	Accumulated distance(NM)
Start (HSC 11)	Port			
HSC 5A	Starboard	105	2.93	2.93
Buccaneer	Port	180	25.92	28.85
HI 179A	Port	27	19.62	48.47
HSC 5A	Port	313	12.42	60.89
Finish (HSC 11)	Starboard	285	2.93	63.82

Course	"3 Green"			
	Leave to:	Bearing(Magnetic)	Leg distance(NM)	Accumulated distance(NM)
Start (HSC 11)	Port			
HSC 5A	Starboard	105	2.93	2.93
HI 179A	Starboard	139	12.42	15.35
Buccaneer	Starboard	276	19.62	34.97
HSC 5A	Port	360	25.92	60.89
Finish (HSC 11)	Starboard	285	2.93	63.82







Attachment 2 Offshore Courses

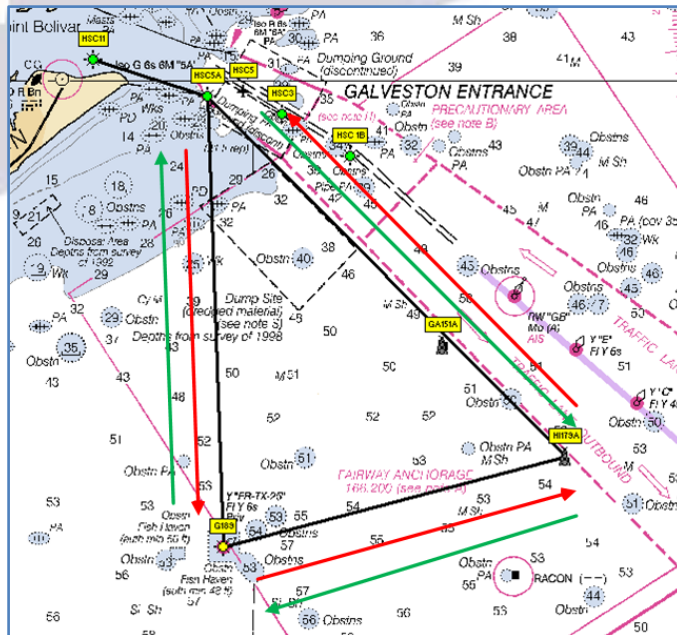
Course	"4 Red"	"4 Green"			
					
	Leave to:	Leave to:	Bearing (Magnetic)	Leg Distance(NM)	Total Distance(NM)
Start (HSC 11)	Port	Port	--	--	--
HSC 5A	Starboard	Starboard	105	2.93	2.93
Buccaneer	Port	Starboard	180	25.92	28.85
HSC 5A	Port	Port	360	25.92	54.77
Finish (HSC 11)	Starboard	Starboard	285	2.93	57.70



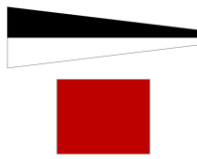
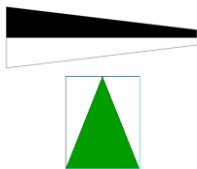
Attachment 2 Offshore Courses

Course	"5 Red"			
	Leave to:	Bearing (Magnetic)	Leg distance(NM)	Accumulated distance(NM)
Start (HSC 11)	Port			
HSC 5A	Starboard	105	2.93	2.93
Mitchell's Reef	Port	176	11.02	13.95
HI179A	Port	73	8.65	22.60
HSC 5A	Port	313	12.42	35.02
Finish (HSC 11)	Starboard	285	2.93	37.95

Course	"5 Green"			
	Leave to:	Bearing (Magnetic)	Leg distance(NM)	Accumulated distance(NM)
Start (HSC 11)	Port			
HSC 5A	Starboard	105	2.93	2.93
HI179A	Starboard	133	12.42	15.35
Mitchell's Reef	Starboard	253	8.65	23.99
HSC 5A	Port	356	11.02	35.02
Finish (HSC 11)	Starboard	285	2.93	37.95


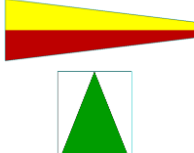


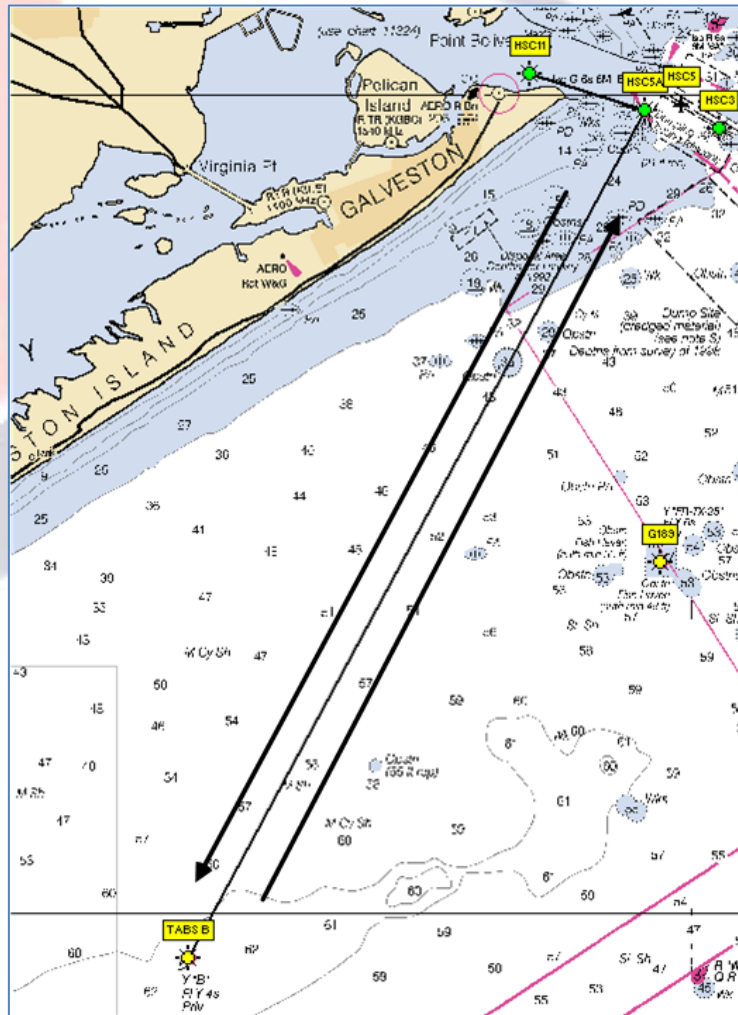
Attachment 2 Offshore Courses

Course	"6 Red"	"6 Green"			
			Leave to:	Bearing (Magnetic)	Leg Distance(NM)
Start (HSC 11)	Port	Port	--	--	--
HSC 5A	Starboard	Starboard	105	2.93	2.93
Mitchell's Reef	Port	Starboard	176	11.02	13.95
HSC 5A	Port	Port	356	11.02	24.97
Finish (HSC 11)	Starboard	Starboard	285	2.93	27.90



Attachment 2 Offshore Courses

Course	"7 Red"		"7 Green"		Bearing (Magnetic)	Leg Distance(NM)	Total Distance(NM)
			Leave to:	Leave to:			
Start (HSC 11)	Port	Port	--	--	--	--	--
HSC 5A	Starboard	Starboard	105	2.93	2.93		
TABS B	Port	Starboard	206	23.46	26.39		
HSC 5A	Port	Port	26	23.46	49.85		
Finish (HSC11)	Starboard	Starboard	285	2.93	52.78		





ATTACHMENT 3 –Photographic Images

Buccaneer Rig
Approx.
28° 53.648' N
094° 42.263' W



ATTACHMENT 3 –Photographic Images

<p style="text-align: center;">TABS B</p> <p style="text-align: center;">https://www.ndbc.noaa.gov/station_page.php?station=42043</p>  <p style="text-align: center;">Flashing Yellow- 4 Second labeled "B"</p>	<p style="text-align: center;">TABS F</p> <p style="text-align: center;">https://www.ndbc.noaa.gov/station_page.php?station=42050</p>  <p style="text-align: center;">Flashing Yellow 4 Second labeled "F"</p> <p style="text-align: center;">Note: There is a Quick Flashing Red light ~1nm to WSW with a horn</p>
<p style="text-align: center;">GA 189 Mitchell's Reef Marker Photo not available Yellow Buoy with sign: "FR-TX-25" Flashing Yellow 6 seconds</p>	<p style="text-align: center;">High Island 179A KXIH Photo not available https://www.ndbc.noaa.gov/station_page.php?station=kxih</p>