



75th JUNIOR LIPTON CHALLENGE

August 1st-2nd, 2020

Organizing Authority: **Gulf Yachting Association (GYA)**

Host Club: **Gulfport Yacht Club (GYC)**



SAILING INSTRUCTIONS

1. Rules

- 1.1. The regatta shall be governed by the rules as defined in the current edition of *The Racing Rules of Sailing* (RRS) and the GYA Regulations for Sanctioned Events.
www.gya.org/documents/GYA2020Directory.pdf
- 1.2. Appendix T and V1 shall be in effect.
- 1.3. The US Sailing Prescriptions to RRS 63.2 and 63.4 are deleted.

2. Notice to Competitors

- 2.1 Notices to competitors shall be posted on the official notice board which is the regatta website;
https://www.regattanetwork.com/clubmgmt/applet_notice_board.php?regatta_id=20957
- 2.2 Any questions regarding the SI's shall be submitted in writing before 0930 on Saturday to info@gulfportyachtclub.org and written answers shall be posted on the official notice board.

3. Changes to Sailing Instructions

Any change to the SIs shall be posted 60 minutes before the scheduled start of the first race of the day it will take effect, except that any change in the schedule of races shall be posted by 1800 on the day before it will take effect.

4. Signals Made Ashore

- 4.1. Signals made ashore shall be displayed online on the [official notice board](#) and on the flag pole on the east side of the GYC clubhouse.
- 4.2. When flag "AP" is displayed ashore, "1 minute" is replaced with "not less than 30 minutes." This changes race signal AP.

5. Schedule

- 5.1 Six (6) races are scheduled.
- 5.2 One (1) race constitutes a regatta.
- 5.3 **Saturday, August 1st**
 - 0830-0955 Check-in via text or phone to the Regatta Chair. (See Section 21)
 - 1000 Competitors' meeting broadcasted over VHF Channel 72
 - 1130 First warning signal of the day, additional races to follow
- Sunday, August 2nd**
 - 0900 Competitors' courtesy update over VHF Channel 72
 - 1000 First warning signal of the day, additional races to follow
 - 1500 No warning signal after this time

6. Crew Changes and Crew Lists

- 6.1. Crew Changes: The Race Committee (RC) asks that teams change crew on the water, in the vicinity of the start/finish area. Teams without support boats, please notify the Regatta Chair or the PRO prior the competitors' meeting so that arrangements may be made. The RC will discourage crews from returning to the harbor to change crew.
- 6.2. Crew List: Per GYA Regulation 17.7, team captains, or their designee, shall file crew lists each day before the end of protest time limit. The crew list shall be completed online at <https://forms.gle/yA85mXNp7kmgqtHh9>

7. Class Flag

The GYA burgee shall be the class flag.

8. Racing Area

The racing areas are shown on Exhibit A and are designated 1 and 2. The Race Committee will display numerical pennant #1 or #2 from the Race Committee Signal Boat along with Flag "L" on departure to the racing area each day. The number displayed will indicate the racing area where the Race Committee plans to set the initial course of the day. In the event racing area #1 (West) is signaled, the Gulfport Ship Channel should not be crossed north of Channel Market #61 in order to avoid possible shoal water. The location of starting area #2 will be (East) of the of the Club and Gulfport Ship Channel. This changes RRS race signals.

9. Check In

Prior to the warning signal for the first start of each day, each boat shall sail past the stern of the RC signal boat and hail her sail number until acknowledged by the RC. Penalty for not complying with this requirement may be a scoring penalty.

10. Courses

- 10.1. The diagrams in Exhibit B show the courses, the order in which marks are to be passed, and the side on which each mark is to be left.
- 10.2. No later than the warning signal, the RC signal boat shall display the course to be sailed, and approximate compass bearing of the first leg.

11. Marks

- 11.1. Mark 1 will be a green tetrahedron.
- 11.2. Offset mark 1a will be an orange sphere.
- 11.3. Marks 2g (leeward gate) will be orange tetrahedrons.
- 11.4. New marks will be yellow tetrahedrons.
- 11.5. The start mark will be a large orange sphere.
- 11.6. The finish mark will be a small orange sphere.

12. The Start

- 12.1. Races shall be started in accordance with RRS 26.
- 12.2. The starting line will be a staff displaying an orange flag on the RC signal boat at the starboard end of the line and the course side of the port-end start mark.
- 12.3. The Signal Boat will have a white buoy attached to the stern by a line. The white buoy and its attachments are parts of the mark.
- 12.4. A boat starting later than 5 minutes after her starting signal shall be scored Did Not Start (DNS) without a hearing. This changes RRS 63.1, A4 and A5.
- 12.5. The RC may hail boats that are OCS by either bow number or sail number. The failure of any boat to hear the hail, an untimely hail of OCS boats, failure to hail any boats, and the order of the boats in the hail shall not be grounds for a request for redress. This changes RRS 62.1(a).

13. Change of Course

To change the next leg of the course, the RC shall set a new mark (or move the finish line) and remove the original mark as soon as practical. When in a subsequent change a new mark is replaced, it shall be replaced by the original mark.

14. The Finish

- 14.1. The finish line will be between a staff displaying an orange flag on a RC boat and the starboard-end finish mark.
- 14.2. Flag "A" displayed, with no sound, by the RC signal boat while boats are finishing means 'No more racing today.'

15. Time Limits

- 15.1. The time limit for the first boat to reach the first weather mark shall be 30 minutes.
- 15.2. The time limit of the first boat to sail the course and finish shall be 90 minutes.
- 15.3. Boats failing to finish within 15 minutes after the first boat sails the course and finishes will be scored Time Limit Expired (TLE) without a hearing. This changes RRS 35, A4 and A5.

16. Protests, Request for Redress, and Post Race Penalties

- 16.1. Protest forms shall be available at the "Protest Box", located next to the front door of GYC. Protests, requests for redress, and request for reopening shall be delivered there within the appropriate time limit.
- 16.2. RRS 61 is changed to add the following requirements for a valid protest: "A boat shall inform the finish line race committee boat of her intent to file a protest and the sail number (or other identification) of the protested boat either at the first reasonable opportunity after finishing, or if the protesting boat does not finish, at the first reasonable opportunity, and she must receive confirmation from the race committee."
- 16.3. The protest time limit shall be 60 minutes after the race committee signal boat docks for the day and fires one sound signal or the RC signals ashore no more racing today, whichever is later. The protest time limit shall be posted on the official notice board.
- 16.4. On the last scheduled day of racing, a request for redress based on a protest committee decision shall be delivered no later than 30 minutes after the decision was posted. This is in addition to the requirements of RRS 62.2.
- 16.5. Notices will be posted as soon as possible, but no later than 20 minutes after the protest time limit, to inform competitors of hearings in which they are parties or named as witnesses.
- 16.6. Hearings will be held at the Gulfport Yacht Club.
- 16.7. A competitor wishing to take a post race penalty in accordance with Appendix T shall complete the "Appendix T Alternative Penalty/ Post Race Penalty Form" and submit to one of the Judges prior to the start of a protest hearing involving the incident. The forms will be available at the "Protest Box". This changes Appendix T1.

17. Scoring

- 17.1. The Low Point Scoring System of RRS A4 will apply, except that no races scored will be excluded. This changes RRS A2.1.
- 17.2. Add, "A score of (TLE) will be two points more than the last boat to finish within the time limit, but not worse than last place. This changes RRS A4 and A11.
- 17.3. Ties will be decided in accordance with GYA Regulation 20.5. This changes RRS A8.

18. Safety Regulations

- 18.1. Each competitor is solely responsible for his and her personal safety. It shall be the sole responsibility of each boat to decide whether or not to start or to continue to race. A boat which retires from a race shall notify the RC before leaving the race area, or if that is not possible, at the first reasonable opportunity.
- 18.2. All competitors shall wear, at all times, a US Coast Guard PFD, dependent 100% on foam for flotation, except for brief periods of time while adding or removing clothing. All requirements of GYA Regulations Section D shall be followed.
- 18.3. In the interest of safety or to avoid unreasonable delays, the RC, at its discretion and with concurrence of the Judges, may order a capsized boat rescued and scored "Did Not Finish".

19. Responsibility

Competitors participate in the regatta at their own risk. See RRS 4, Decision to Race. The organizing authority and host club will not accept any liability for material damage or personal injury or death sustained in conjunction with or prior to, during or after this regatta.

Sailing during the COVID-19 global pandemic presents new challenges to event organizers and competitors alike. The OA, including host clubs, intend to follow all applicable governmental requirements, but it is also up to each individual skipper, crew and guest to act responsibly and within their own comfort range when choosing whether and how to participate in this event. Similar to offshore safety equipment, the OA strongly recommends all appropriate health precautions, but makes no assessment or warranty of each team's preparedness or safety.

EACH COMPETITOR PARTICIPATES IN THIS EVENT AT THEIR OWN RISK.

20. Awards

Awards shall be awarded in accordance with GYA Regulations 20.6 and 20.7. There is no scheduled awards ceremony. Awards will be distributed to the recipients.

21. Contact Information

Regatta Chair: Courtney Collier-Borzik, courtcollier2000@yahoo.com, 228-697-2439

Principal Race Officer: Steve Nolte, noltesteve@aol.com, 504-289-1678

GYA Chief Measurer: Steve Nolte, noltesteve@aol.com, 504-289-1678

Yacht Club Contact Information: Samson Vasquez, info@gulfportyachtclub.org, 228-323-1336

EXHIBIT A

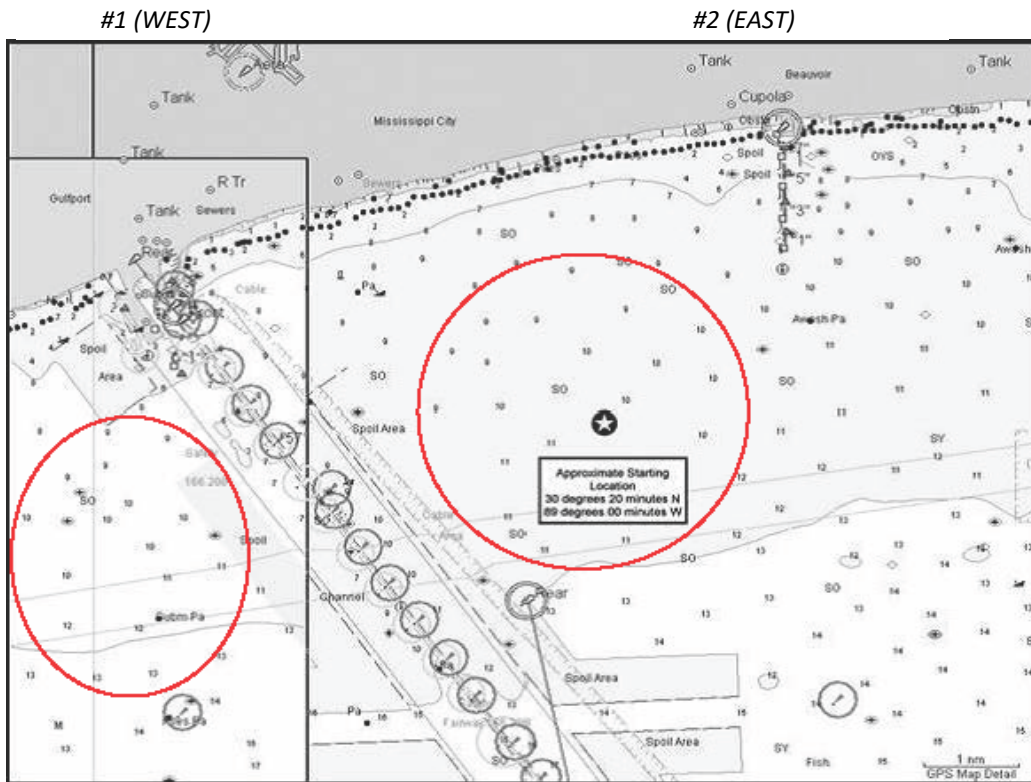
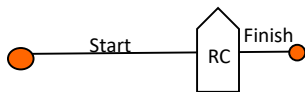
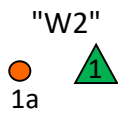


EXHIBIT B:



Course "W2" will be a four (4) leg Windward-Leeward courses with offset marks. All windward marks shall be rounded to port.

Start - 1 - 1a - Gate - 1 - 1a - Finish.