



# COMMONWEALTH OF VIRGINIA CHAMPIONSHIP

July 18-19, 2020

Norfolk Yacht & Country Club

Norfolk, Virginia, U.S.A

## Sailing Instructions

1. **Rules:**

The regattas will be governed by the current RRS, CBYRA, International Optimist Dinghy class rules, International Laser class rules, 420 Class Assoc. rules, except as altered by these sailing instructions.

2. **Notice to Competitors:**

Notice to Competitors will be posted on the Official notice board located on the window of the Waterfront Director's Office

3. **Changes to Sailing Instructions:**

Any changes to these SI's will be posted on the Official notice board before 1000 on the day of the change.

4. **Signals Made Ashore:**

Signals made ashore will be at the club's main flag pole. When the flag AP is hoisted ashore, "1 minute" is replaced by "not less than 60 min" in the race signal AP definition

5. **Schedule:**

**Friday, July 17**

Check in	1700-1900
Skippers' Meeting	1900

**Saturday, July 18**

Check in	0800-0930
Harbor Start	1000
First Warning	1100

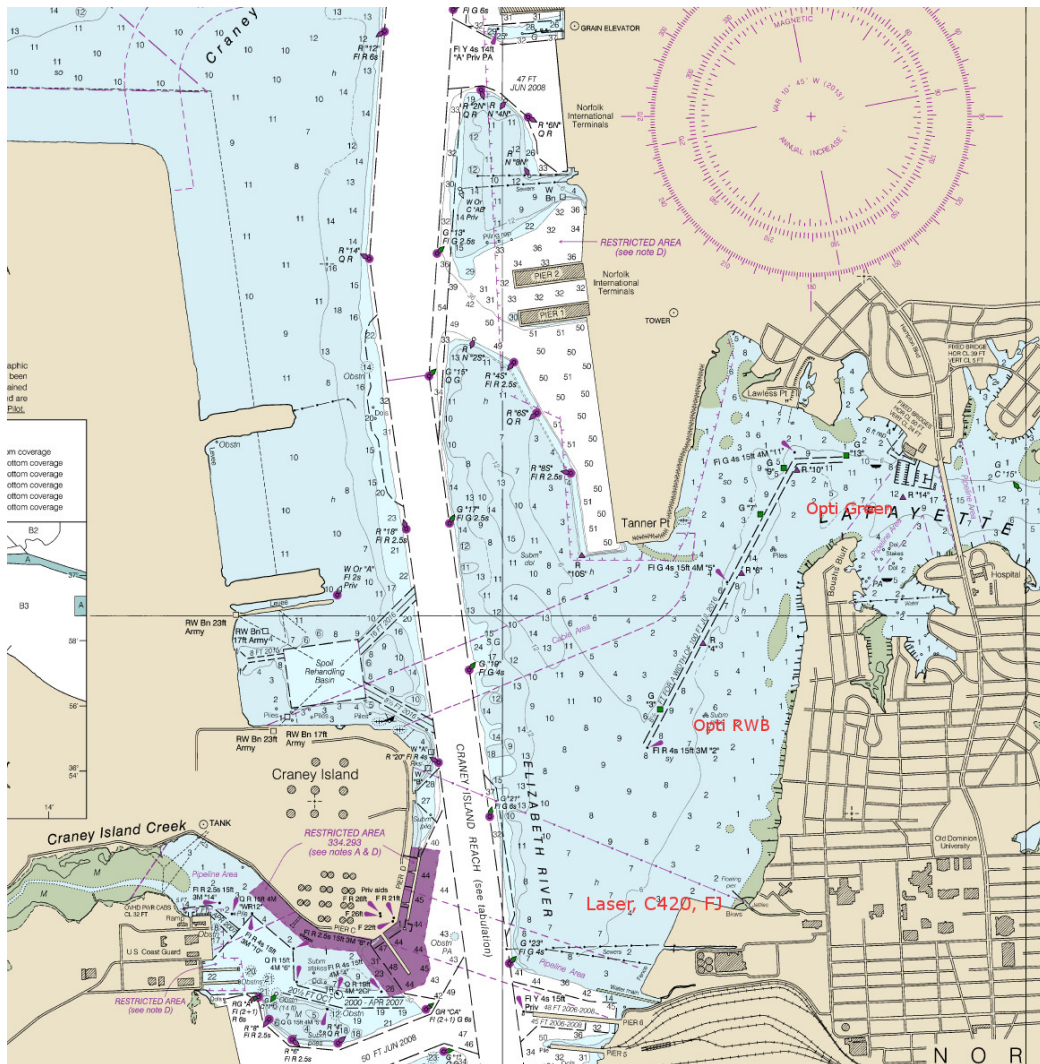
**Sunday July 19**

Harbor Start	1000
First Warning Signal	1100
No warning for any fleet after	1530
Awards	Ceremony TBD (either in person or virtual)

6. **Class Flags:**  
Class flags will be:

<u>Class</u>	<u>Flag</u>
Opti Green	Class Insignia with green background
Opti RWB	Class Insignia with white background
Laser Radial	Class Insignia with green background
420	Class Insignia with white background

7. **Race area**



The race area for the Opti Green Fleet will be just to the west of the NYCC marina.  
Optimist RWB will be south of Tanner Point  
Laser Radial and C420 race area will be west of ODU.

8. **Courses:**  
Course diagrams are attached in Appendix A

9. **Marks:**  
9.1 Marks for the Opti Green Fleet will be orange polyballs. The starting and finishing marks will be orange polyballs.

9.2 Marks for the Optimist RWB will be a combination of large orange and yellow inflatable buoys. Offset mark will be an orange or white pollyball. The starting and finishing marks will be orange or yellow Inflatable buoys.

9.3 Marks for the Laser Radial/420 will be a combination of large orange and yellow inflatable buoys. Offset mark will be an orange or white pollyball. The starting and finishing marks will be orange or yellow Inflatable buoys.

## **10. Obstructions and Hazards**

10.1 All competitors shall avoid the main shipping channel in the Elizabeth River and all commercial traffic.

10.2 All competitors shall avoid large boats in the channel in the Lafayette River.

10.3 There are piles NW of Boush's Bluff and NE of "R6"

## **11. The Start:**

11.1 Opti RWB, Laser Radial and C420 races will be started using RRS 26.

11.2 Opti Green will be started in accordance with RRS Appendix U Audible-Signal Racing System.

11.3 Starting line will be between the staff displaying an orange flag on the RC committee vessel and the starting mark.

11.4 Boats whose warning single has not been made shall avoid the starting area during the starting sequence for other races.

11.5 Recalls will be according to RRS 29. Starting penalties will be according to RRS 30.

## **12. Change of the Next Leg of the Course:**

To change the next leg of the course, the RC will move the original Mark (or the finish line) to a new position.

## **13. The Finish:**

The finish will be between a staff displaying an orange flag on the RC boat and the finishing mark.

## **14. Time Limit:**

14.1 The time limit for the race will be 1.5 hours. Boats failing to finish within 30 minutes after the first boat finishes or within the time limit, will be scored DNF. This changes RRS 35 and A4.1.

## **15. Protests:**

Protest forms are available on the official notice board (*specify*). Time limit will be posted on the Official notice board, no less than 30 minutes after the RC arrives at the dock.

## **16. Scoring:**

Low point scoring system, RRS Appendix A shall apply. One race constitutes a series. 10 races are scheduled for the Opti RWB, Laser Radial and C420 divisions. Opti Green Fleet will sail as many races as practical. If five or more races are completed, the boat's worst score will be excluded.

## **17. Safety:**

17.1 All competitors are required to pass astern of the RC signal boat on Starboard tack, hail their number and receive acknowledgement before the start of the first race of each day.

17.2 All competitors and support personal will be required to wear a USCG approved type III lifejacket at all times afloat. The only exception is for a brief period when changing clothing. Competitors from foreign countries must abide by that country's requirements. Failure to comply will be grounds for team/club DSQ of sailors from all races. **RRS 64.4(b) will be in effect without a hearing. This changes RRS 63.1.**(RRS definition of a support person RRS pg 7).

17.3 Support/parent/coach vessels shall remain outside the course from the time of the Prep flag until all racers have finished the race.

17.4 Any competitor that leaves the racing area prior to the finish of the final race of the day must inform the Race Committee or nearby safety or mark boat.

17.5 Race committees for the 3 courses will use the following VHF channels. All parent/support/coach vessels shall monitor the channel for the course they are on and answer requests from race committee:

Opti Green Fleet – Channel 68

Opti RWB – Channel 69

Laser Radial and C420 – Channel 72

17.6 At all times afloat, all coaches should display in a readable manner, a registered CBYRA coach flag, and should be wearing engine kill-cords. If coach flag is not available the coach shall check in on the water each day with the race committee.

**18. Radio/Electronics:**

The use of GoPro or like recording cameras are acceptable but the use of any type of tracking device, Velocitec, iPhone, Android, etc. is prohibited.

**19. Trash:**

Boats will not put trash (including organic trash i.e. orange peels, apple cores, etc) in the water. All trash aboard the boats will be contained such that in the event of a capsizing; trash will not float away. Trash will be placed in appropriate receptacles ashore. Breach of this rule will be grounds for DSQ without a hearing. This changes RRS 55 and 63.1

**20. Behavior:**

Participants are expected to act in a sportsmanlike manner at all times on and off the water throughout the entire event. Participants include but are not limited to all competitors, support personnel and parents. RRS Basic Principles are expected to be followed.

**21. Trailers, Support Boat Launching and Dockage**

All trailers are required to be stored at the ODU Sailing Center parking lot once unloaded at NYCC. Support powerboat launching will be on ramp A while ramps B and C will be reserved for dinghy launching. Please see the NYCC Harbormaster or Waterfront Director for overnight support boat dock assignments.

**22. Dinghy Launching**

Optis will launch at C ramp while Lasers and 420's will launch on B ramp. Shoes or sandals are required on the NYCC boat ramps (no exceptions!).

**23. Car Parking**

A map of the NYCC event parking and participant staging areas can be viewed [here](#).

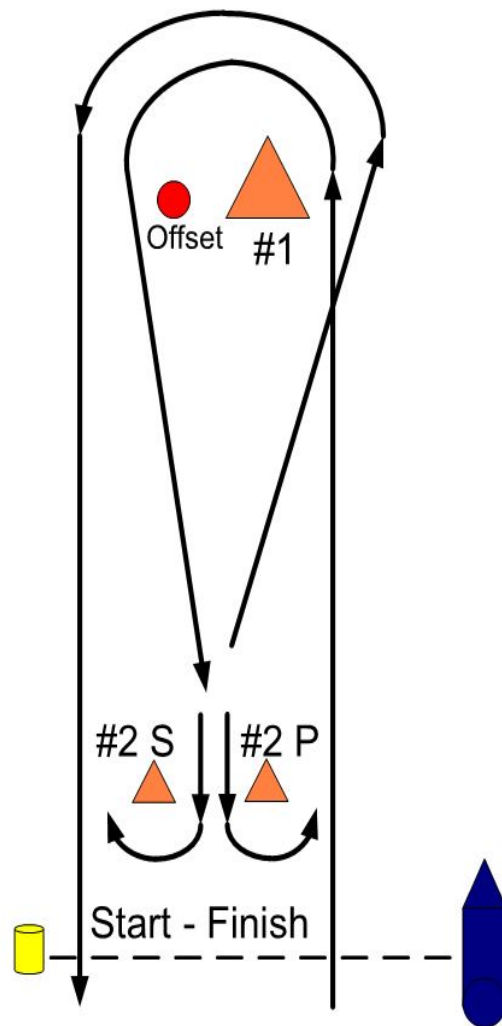
**24. COVID-19 Safety Requirements**

All competitors and support personnel are required to wear face masks or neck gators (often referred to as "Buffs") while ashore and practice safe social distancing at all times.

## APPENDIX A

### COURSES

#### Opti RWB – Laser Radial – C420

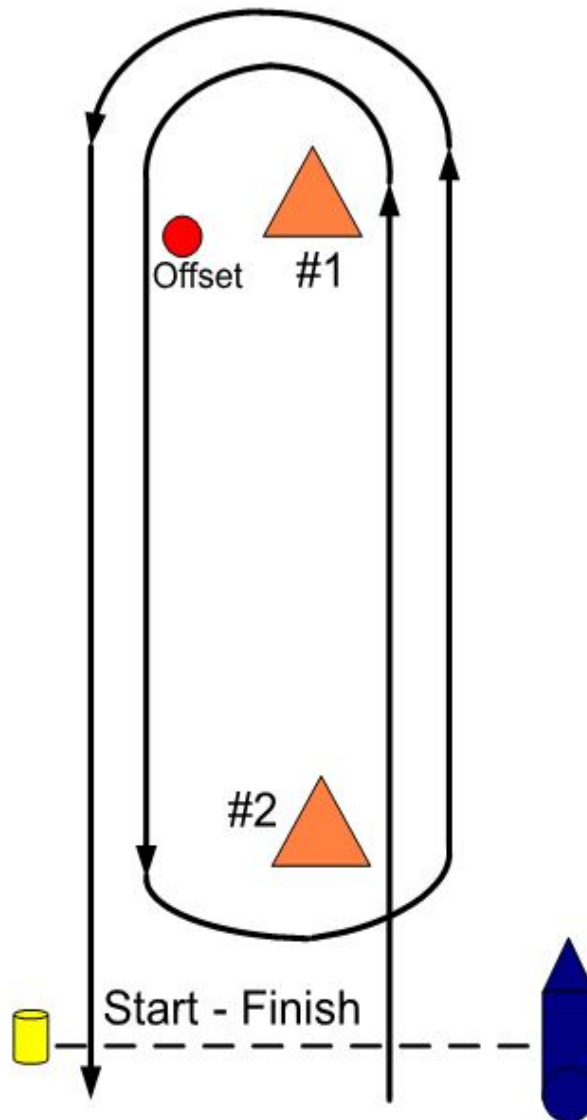


**W2** Start-1-Offset-Finish

**W4** Start-1-Offset-2S/2P-1-Offset-Finish

**W6** Start-1-Offset-2S/2P-1-Offset-2S/2P-1-Offset-Finish

## Opti Green



**W2** Start-1-Offset-Finish

**W4** Start-1-Offset-2-1-Offset-Finish

**W6** Start-1-Offset-2-1-Offset-2-1-Offset-Finish