

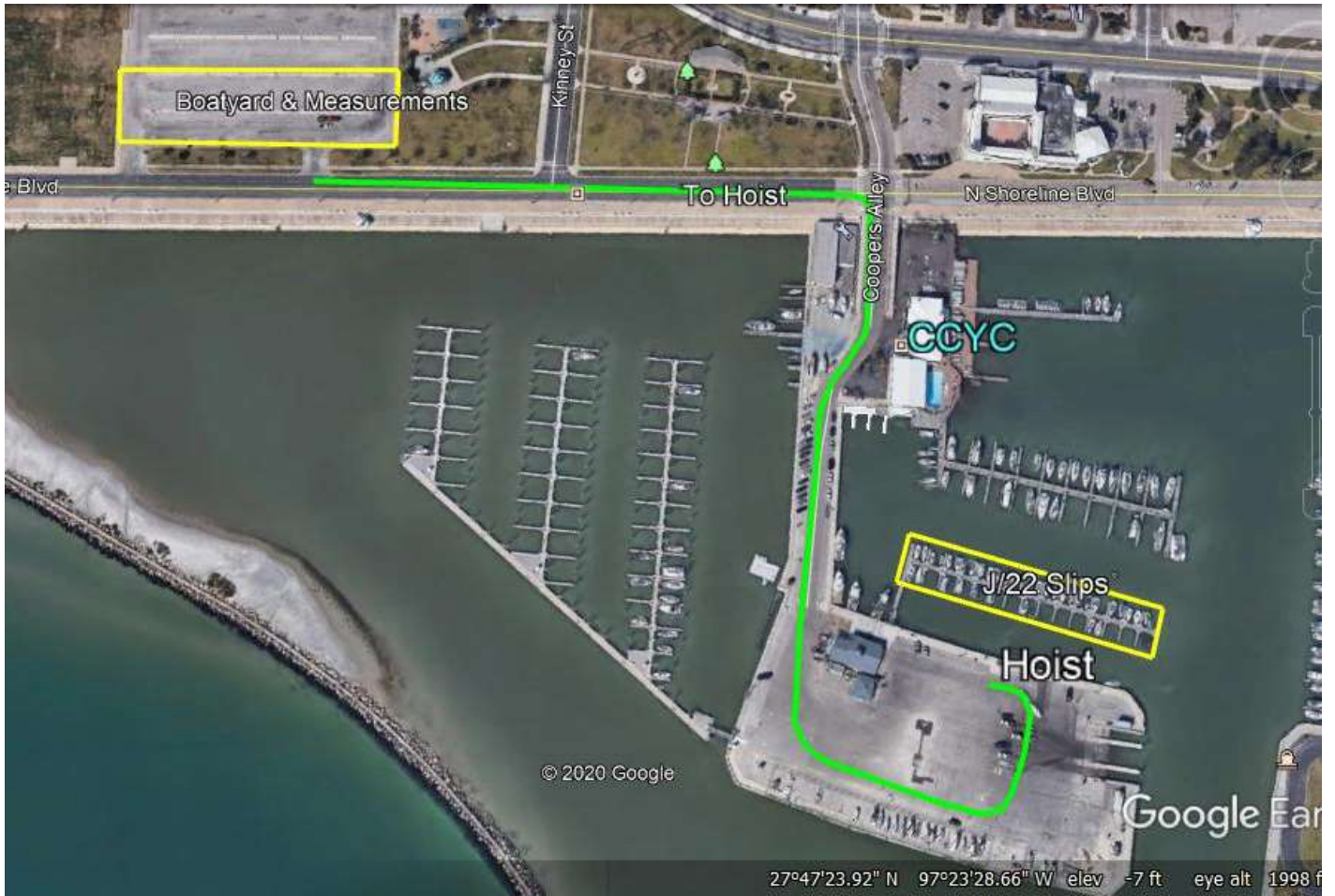


International J/22 Class Association 2021 World Championship Measurement Instructions

1. Before you leave home remove any bow numbers. The Organizing Authority will assign and apply 15" bow numbers at the regatta.
2. When you arrive, park your boat and trailer in the fenced parking lot in the **Boatyard** area. **Raise the mast and attach the boom.** See the attached map of the Corpus Christi Marina facility for details.
3. Check in at the J22 Worlds registration desk in the upstairs library of CCYC (labelled **CCYC** on the map).
 - a. You will receive your measurement package.
 - b. You may deliver your sails to the **sail measurement area** on the upstairs open air deck, adjacent to the registration desk.
 - c. You may weigh-in crew.
4. There are no scheduled boat measurement appointments. When you are ready, drive your boat (mast up) and trailer to the Measurement Area (labeled **Measurements** on map).
5. Once at the Measurement Area, **do not** detach your trailer from your vehicle. You will pull your boat through the measurement stations, when directed.
 - a. Leave at least one person with your boat and trailer – 2 or more would be better – to move your equipment around for measurement.
 - b. Provide your measurement form to the measurer on entering the measurement area.
6. In preparation for measurement:
 - a. Mast up. Remove any mast supports and tie down lines from boat. Attach boom.
 - b. Remove any dock lines from boat.
 - c. Detach tiller and hiking stick from rudder and leave on boat.
 - d. Ensure your rudder can be easily removed from transom but you can leave it on transom.
 - e. Ensure that all your hatches are open, including the forepeak hatch, and that all bins and compartments are completely dry and empty.
 - f. Raise your floorboard and ensure that your bilge is completely dry and empty.
7. Once in the Measurement Area, hand the following equipment off the port side of your boat to the Off-Boat Measurement Area on the left hand side of the measurement area as you enter from the road/parking area: This may happen by a measurement crew in the Boatyard.
 - a. 1 Compass
 - b. 1 Fog Horn
 - c. 1 Water-resistant Flashlight, spare batteries and spare bulb
 - d. Life Jackets for each crew member
 - e. 1 Marine First Aid Kit and Manual
 - f. 1 Paddle, 1200mm minimum length
 - g. 1 Bilge Pump and 10 liter capacity bucket with lanyard
 - h. 1 Anchor, 3kg minimum, maximum chain 4kg; combined 5kg minimum

- i. Anchor Warp, 30m minimum, non-floating, 8mm minimum diameter
 - j. Code Flag B
 - k. Current racing rules of the National Sailing Authority
 - l. 2 Fenders, 152mm minimum diameter, 406mm minimum length or 240mm minimum sphere
 - m. Local or Government mandated safety equipment
 - n. 1 heaving line, 19 m minimum length
8. If you have not done so already, take mainsail, jib and spinnaker, in their bags, to the sail measurement area of CCYC, upstairs deck.
 - a. Ensure that you have your name and sail number on tags on your bags and on your sails. Tags will be provided in your measurement package at the registration desk.
 - b. Have a crew member ready to re-roll sails, put them in bags.
 9. Only these items may be on the boat for weighing, leave the following on the boat:
 - a. Rudder and tiller assembly –
 - b. Mast
 - c. Boom
 - d. Spinnaker pole
 - e. All running and standing rigging
 - f. Compass
 - g. Permanently installed spinnaker launch bag
 - h. Bow and stern pulpits – if permanently installed
 - i. Stanchions and lifelines – if permanently installed
 - j. Running lights – if permanently installed – but no battery
 - k. Outboard motor bracket – if permanently installed
 10. When measurements are complete, load equipment back on your boat and trailer. The boat and trailer will then be moved out of the measurement area, and you must be ready to haul them away immediately with your vehicle, so that traffic isn't blocked.
 11. With all your **completed and signed** measurement sheets, proceed to the registration desk in the **CCYC upstairs library** to get your final package.
 12. Your bow numbers will be applied in the Boatyard by a member of the measurement team. You are ready to launch. **Please do not launch until your bow numbers are installed**
 - a. There will only be the 3-ton **Hoist** to launch boats, but there will be an additional mobile crane (**CRANE Mobile**) for haul-out. There will be a long line-up to launch before the practice race, so try to launch as early as possible.
 13. Upon successful completion of measurements, you may continue to the Coopers Alley L-Head and the hoist for launching, or you may return to the Boatyard. Follow directions to the Hoist (green line) on map. Use the route marked with a green line on the map for departing and returning to the Boatyard/Measurements area. This is the only route that can be taken with a mast-up boat. Other routes may have traffic lights that will obstruct you.
 14. Trailers must be parked in the **Boatyard** area designated on the map.
 15. Boat slips are available on M-Pier (shown on map as "**J/22 Slips**"), directly west of the hoist location. They are on a first-come, first-served basis. As soon as possible, move your boat from the hoist area to any available slip on M-Pier.

Map of Corpus Christi Event Area



Boatyard and Measurement Area

