

C420 / Laser Sailing Instructions

1. RULES

1.1 The regatta will be governed by the rules as defined in The Racing Rules of Sailing

2 NOTICES TO COMPETITORS

2.1 Notices to competitors will be posted on the official notice board located at the VYC registration Area

3 CHANGES TO SAILING INSTRUCTIONS

3.1 Any change to the sailing instructions will be posted before 0900 on the day it will take effect,

4 SIGNALS MADE ASHORE

4.1 Signals made ashore will be displayed ashore from the VYC flagpole.

5 SCHEDULE OF RACES

5.1 To alert boats that a race or sequence of races will begin soon, the orange starting line flag will be displayed with one sound at least **2 minutes** before a warning signal is made.

5.2 As many races as possible are scheduled. One race will constitute a regatta.

5.3 Races are scheduled as follows: No warning will be made after 1530.

Friday April 23rd – 1830 - Skipper's meeting (online link will be sent)

Saturday April 24th;

0800 Check-In – Tent at VYC by Pool / Tiki Bar

1000 First Signal for Optimist Green

1030 First Signal for All Other Classes

1530 No Warnings after this time

Awards to follow racing on lawn beside VYC Tiki Bar

6 CLASS FLAG

6.1 Class flag will be shown on RC boat before each race

7 THE COURSES

7.1 The course diagrams are in Attachment A.

8 MARKS

8.1 Marks will be inflatable tetrahedrons, cylinders or spheres. Each mark shall be a single color. Mark colors will be announced at Skippers Meeting

9 THE START

9.1 Races will be started by using sound signals as stated in Appendix U.

9.2 The starting line will be between a staff displaying an orange flag on the race



committee vessel on one end of the starting line and a designated pin mark.

~~9.3 Race Committee will not hail the sail numbers of the boats OCS or subject to starting penalties.~~

9.4 A boat that does not start within 5 minutes after starting signal will be scored **Did Not Start** without a hearing.

10 CHANGE OF THE NEXT LEG OF THE COURSE

10.1 Marks can will only be adjusted between races.

11 THE FINISH

11.1 The finishing line will be between the race committee vessel and the course side of the start/finishing mark. The finish line is the same as the start line in all courses.

12 TIME LIMITS

12.1 The following time limits will apply: Race Time Limit Is 45 minutes

12.2 Boats failing to finish within the Finishing Window shall be scored DNF without a hearing. This changes RRS 35,63.1 and A5.1

13 PROTESTS AND REQUESTS FOR REDRESS

13.1 Protest forms are available at the race office. Protests and requests for redress or reopening shall be delivered there within the appropriate time limit.

13.2 The protest time limit is **30 minutes after the last race committee boat** has docked.

13.3 Notices will be posted no later than 10 minutes after the protest time limit to inform competitors of hearings in which they are parties or named as witnesses and where the hearings will be held.

13.4 Notices of protests by the race committee, technical committee or protest committee will be posted to inform boats under RRS 61.1(b).

14 SAFETY REGULATIONS

14.1 **Check-In with the Signal Boat before the initial warning signal of the first race of each day by sailing near the Signal Boats stern on a starboard tack and hailing your sail number until acknowledged by the Signal Boat. Failure to check in may result in a penalty.**

14.2 A boat retiring from the race shall notify a Race Committee vessel before leaving the course, or, when that is not possible, notify the Race Office immediately upon arriving ashore.

14.3 All competitors shall always wear personal floatation devices while afloat

15 SUPPORT BOATS

15.1 Support vessels shall monitor **VHF Channel # 68**

15.2 All support boats equipped with an emergency cutoff switch, the operator shall always wear the associated lanyard when in the vicinity of competitors, the sailing area, and VYBA/VYC/Higel docks.

15.3 Team leaders, coaches, and other support persons shall stay outside areas where boats

are racing from the time of the preparatory signal for the first class to start until all boats have finished or retired or the race committee signal postponement or abandonment.

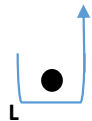
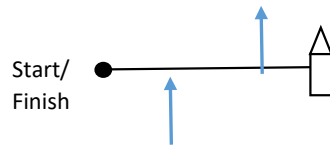
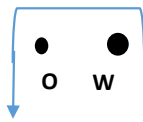
15.4 All coach boats and other support boats shall come to the aid of any competitor in distress or requesting assistance.

15.5 All support boats shall comply with US Coast Guard regulations.

ATTACHMENT A

420s/Lasers

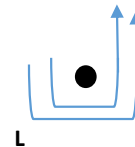
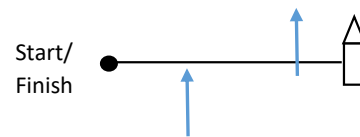
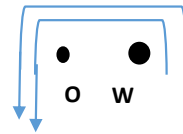
Course A (W2) : Closed Gate



Course A- (W2)

Start – W – O – L – Finish

Course B (W3) : Closed Gate



Course B- (W3)

Start – W – O – L – W – O – L – Finish