



**1. ORGANIZING AUTHORITY & HOST**

The regatta is organized under the authority of Venice Youth Boating Association. The event will be held at the Venice Yacht Club (1330 Tarpon Center Dr).



**2. RULES**

The Venetian Cup Regatta will be governed by the Racing Rules of Sailing (RRS).

**3. ELIGIBILITY & ENTRY**

3.1. The regatta is open to the following classes: Optimist Green, Optimist RWB, C420, Laser Radial, Laser 4.7.

**4. REGISTRATION & FEES**

4.1. Fees:

<u>Class</u>	<u>Registration BEFORE 4/14</u>
<b>All Optimist/Laser</b>	\$55
<b>All 420s</b>	\$100

4.2. Online Registration is available on Regatta Network. If you register after April 14th you are not guaranteed a t-shirt.

4.3. All registrations received from April 15th-April 21st will be charged a \$15 late fee.

4.4. Registrations close on April 21<sup>st</sup>

4.5. Sailors will receive a light breakfast, lunch, t-shirt (refer to 4.2), and regatta bag.

4.6. Dependent on COVID numbers, caps on registration and waitlists may apply. Currently the event is limited to 100 sailors.



## 5. SCHEDULE OF EVENTS

### 5.1. Friday, April 23<sup>rd</sup>

1900 Green Fleet Zoom Meeting (link to be sent to participants)

1930 RWB / C420 / Laser Zoom Meeting (link to be sent)

### 5.2 Saturday, April 24th

0800-0900 Check-In – Tent at VYC by Pool / Tiki Bar

1000 First Signal for Optimist Green

1030 First Signal for All Other Classes

1530 No Warnings after this time

Awards to follow racing on lawn beside VYC Tiki Bar

## 6. SAILING INSTRUCTIONS

Sailing Instructions will be available digitally only on Regatta Network. Sailing Instructions will include designated rigging area for each fleet.

## 7. SAILING AREAS

7.1. All Optis will rig in the VYB/VYBA Parking Lot

7.2. All Lasers and C420s may rig and launch from Higel Park boat ramp – **PLEASE NOTE – we are NOT able to close the park this year to public so there will be some public boat launching and parking in Higel. When rigging please do not block the boat ramp!!**

7.3. Optimist Green Fleet's Sailing Area will be in Roberts Bay due East of the VYC. There will be no lunch break this year – sailors will have lunch on the water!

7.4. All Other Fleets will race in the Gulf of Mexico SOUTH of the Venice Inlet. All regatta participants are urged to exercise caution when entering and exiting the Gulf of Mexico especially while passing through the jetties at Venice Inlet.

7.5. All Sailing Areas are subject to change depending on weather and sea conditions.

## 8. COURSES

Courses will be specified in the Sailing Instructions.

## 9. SCORING

9.1. One race constitutes a regatta.

9.2. If five (5) races or more are sailed, a boat's worst score shall be discarded.

## 10. AWARDS

Trophies will be awarded for 1<sup>st</sup>, 2<sup>nd</sup> and 3<sup>rd</sup> in each fleet. Participation medals will be given to all competitors in the Optimist Green Fleet.

## 11. PHOTOGRAPHER & MEDIA RIGHTS

Competitors give absolute right and permission for any photographs or video footage taken of them or their competing boat to be published in any media whatsoever; for editorial or advertising purposes, or to be used in press information. VYBA reserves the right to fly a drone during the racing events, however NO footage will be available to any coaches until after the full regatta events have ended. No other drones will be allowed in the sailing areas.



## 12. DISCLAIMER OF LIABILITY

Competitors participate in the regatta entirely at their own risk. The organizing authority, *Venice Youth Boating Association, Inc.*, *Venice Yacht Club*, Sarasota County, and the City of Venice will not accept any liability for material damage, personal injury or death sustained in conjunction with, prior to, during, or after the regatta.

## 13. FOOD & BEVERAGE FOR REGATTA ATTENDEES

Food and beverage WILL NOT BE AVAILABLE at the VYC Tiki this year due to COVID restrictions. **Please do not spend time at the Tiki or enter the VYC buildings unless you are a member or reciprocal member.** Masks are required inside of all VYC buildings. Marina restrooms will be available for use by participants. Restrooms are also available at Higel Park in the pavilion.

Please consider visiting any of our Venice Mainstreet restaurants, Jetty Jacks on the South Jetty, Crows Nest Marina restaurant or get snacks at Venice Beach!

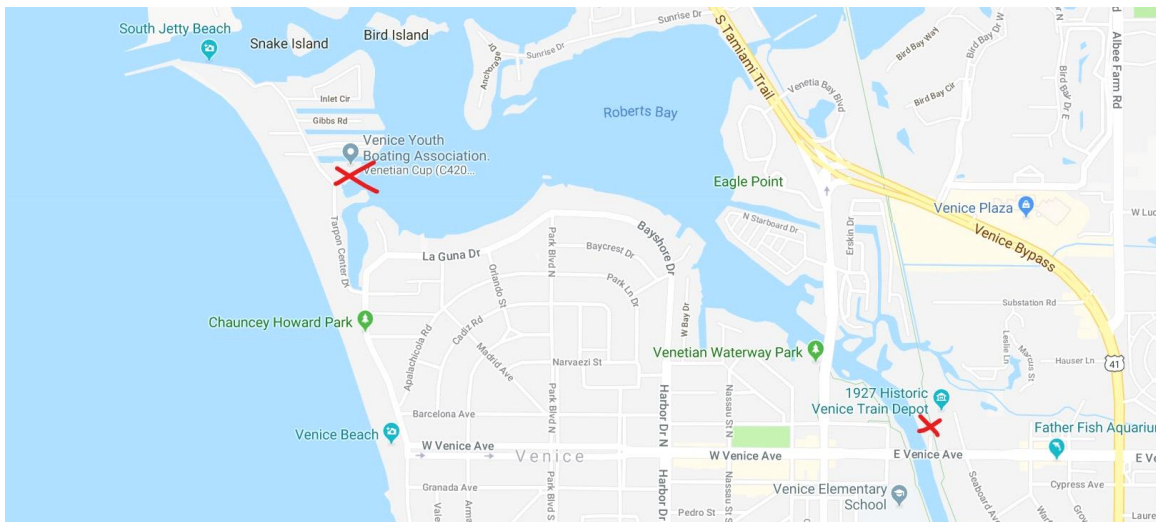
## 14. COACH & SPECTATOR BOATS

14.1. Coach, support, and spectator boats are required to launch from the Venice Train Depot Park.

14.2. To reach the Venice Train Depot Park, when traveling West on Venice Ave towards the Island from the Mainland, do NOT go over the bridge but stay to the right and follow signs for the park.

14.3. To reach the VYC by water from the Venice Train Depot Park, travel North on the ICW for 1.5 miles. VYC is the large white building with the blue roof. Coach boats can dock at the Higel Park docks just to the SW of the VYC.

14.4.



14.5. Opti Staging Area: Rig in the main parking lot of the Venice Yacht Club and launch from the VYBA Floating Dock.

14.6. Lasers and C420s will stage and launch from Higel Park (see above)

14.7. Additional Parking: Parking available at Graser Park located at the intersection of The Esplanade and Barcelona Ave. (746 Barcelona Ave, Venice, FL 34285) and at the South Jetty located at the end of Tarpon Center Dr.

## 15. DIRECTIONS

From the South:

Take I-75N to Exit 193 (Jacaranda Blvd). Turn left at the exit ramp onto Jacaranda Blvd. Proceed to the roundabout



and exit at your first right onto Venice Ave (going West). Follow Venice Ave west over the drawbridge onto the Island and into downtown Venice. At the end of Venice Ave, turn right onto The Esplanade.

At first stop sign, turn left onto Tarpon Center Dr. Higel Park will be on your right followed directly by the Venice Yacht Club and Venice Youth Boating Association parking lot on your right. Volunteers will assist with parking.

#### From the North:

Take I-75 South to Exit 200, Highway 681. Proceed South at US 41. At the fork of US41 and Venice Bypass South, keep right to go over the drawbridge. After the drawbridge, turn right at the second light for Venice Ave. Follow Venice Ave West through downtown Venice. At the end of Venice Ave, turn right onto The Esplanade. At first stop sign, turn left onto Tarpon Center Dr. Higel Park will be on your right followed directly by the Venice Yacht Club and Venice Youth Boating Association parking lot on your right. Volunteers will assist with parking.

### 16. ACCOMMODATIONS

Inn at the Beach -- 725 W Venice Ave, Venice FL 34285 -- 941.484.8471 (on the island)

Hampton Inn & Suites -- 881 Venetia Bay Blvd, Venice FL 34292 -- 941.488.5900 (just off the island)

Island Breeze Inn -- 340 Tamiami Trail S, Venice, FL 34285 -- 941.488.4417 (on the island)

### 17. COVID PREVENTION

**We ask that all participants wear masks/buffs when on land in Higel Park or Venice Yacht Club.** We encourage all spectators and sailors to maintain a 6ft safe social distance when possible. We ask that non-members not enter the Venice Yacht Club, but remain outside. We also ask that spectators not gather in large groups. We encourage spectators to visit the North or South Jetties as well as Venice Beach where there are large outdoor areas.

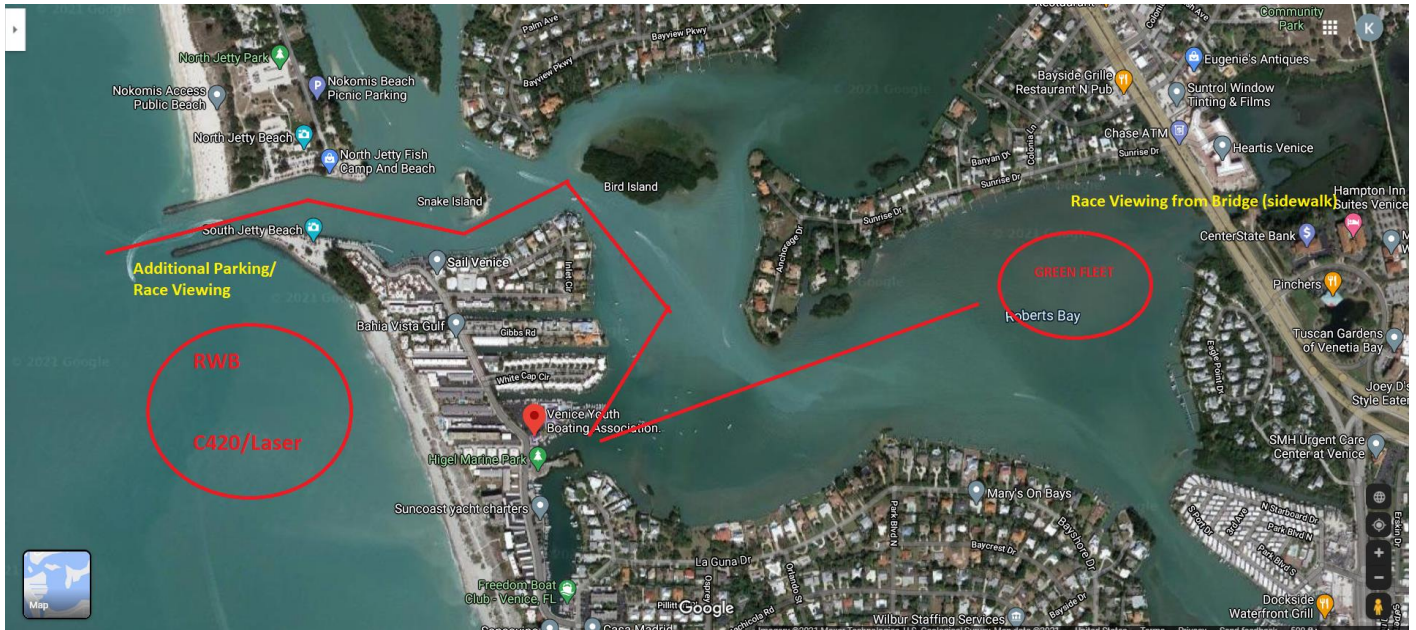
### 18. PARKING / SAILING / RIGGING AREA MAPS

#### 18.1 Parking, Staging, Registration





## 18.2 Sail Areas and Viewing



*For more information, call/text VYBA Executive Director at 941-468-1719*