



TAMPA YACHT & COUNTRY CLUB

Gasparilla Regatta

Tampa Yacht & Country Club

9-10 Jan 2021

1. RULES

The regatta will be governed by the rules as defined in *The Racing Rules of Sailing and the IODA Class Rules*

2. NOTICES TO COMPETITORS

Notices to competitors will be posted on the official notice board located at the Sailing Office.

3. CHANGES TO SAILING INSTRUCTIONS

Any change to the sailing instructions will be posted before 0800 on the day it will take effect, any change to the schedule of races will be posted by 2000 on the day before it will take effect.

4. COVID PRECAUTIONS

1. Masks must be worn at all times while on TYCC property.
2. Each team will have an assigned area of the TYCC Parking Lot to use.
3. The skippers meeting will be at the Sailing office for Coaches only. The Lunches will be distributed at the skippers meeting.
4. Teams will be given a launch order at the skippers meeting.

5. SIGNALS MADE ASHORE

1. Signals made ashore will be displayed at the club flagpole.
2. When flag AP is displayed ashore, '1 minute' is replaced with 'not less than 45 minutes' in the race signal AP.

6. SCHEDULE OF RACES

Day	Time	
Sat	0900	Skippers Meeting
	1000	First Signal
Sun	0900	First signal
	1400	Last warning

8. THE COURSE

1. Appendix A shows the location of the racing areas.
2. The diagrams in Appendix B show the courses for both RWB and Green Fleets, including the approximate angles between legs, the order in which marks are to be passed, and the side on which each mark is to be left.
3. Courses will not be shortened. This changes RRS 32.
4. Legs of the course will not be changed after the preparatory signal. This changes RRS 33.

9. THE START

1. RWB Races will be started by using RRS 26
2. Green Fleet races will be started using US Sailing Prescription U (Audible-Signal racing system).
3. The starting line will be between a staff displaying an orange flag on the committee boat and the course side of the port-end starting mark.
4. A boat may not start more than 4 minutes after her starting signal.

10. THE FINISH

1. On the RWB course the finishing line will be between a staff displaying a Blue flag on the committee boat and the course side of the starboard end finishing mark.
2. On the Green Fleet Course, the Finishing line will be between a staff displaying an Orange Flag and the course side of the port end finishing mark.

11. TIME LIMITS AND TARGET TIMES

1. The target time for RWB races will be 30 minutes
2. The Target time for Green Fleet races will be 25 minutes.
3. Boats failing to finish within 20 minutes after the first boat sails the course and finishes will be scored in place.

12. PROTESTS AND REQUESTS FOR REDRESS

1. Protest forms are available at the sailing office. Protests and requests for redress or reopening shall be delivered there within the appropriate time limit.
2. The protest time limit is 30 minutes after the Race Committee returns to the dock. The protest time limit will be posted at the official notice board.
3. Notices will be posted no later than 30 minutes after the protest time limit to inform competitors of hearings in which they are parties or named as witnesses. Hearings will be held in the protest room, located at the Dockmaster's office.

13. SCORING

1. 1 race shall constitute a series.
2. When fewer than 6 races have been completed, a boat's series score will be the total of her race scores. When from 6 to 11 races have been completed, a boat's series score will be the total of her race scores excluding her worst score. When 12 or more races have been completed, a boat's series score will be the total of her race scores excluding her two worst scores.

14. SAFETY REGULATIONS

1. Designated rigging areas will be assigned.
2. While on land at TYCC competitors and support persons must wear masks.
3. Prior to the first warning signal each day competitors shall sail past the stern of the race committee on starboard tack and hail her sail number.
4. All competitors shall wear a PFD at all times while racing (except while changing clothes or gear).

15. SUPPORT BOATS

1. Coaches shall be permitted to coach the back half of the Green fleet.
2. Boats may be stored on F dock, the southernmost dock in the TYCC Marina.

16. TRASH DISPOSAL

1. Trash may be disposed of aboard any TYCC vessel.
2. Competitors shall not litter in the bay, any sailor caught littering will be disqualified.

17. PRIZES

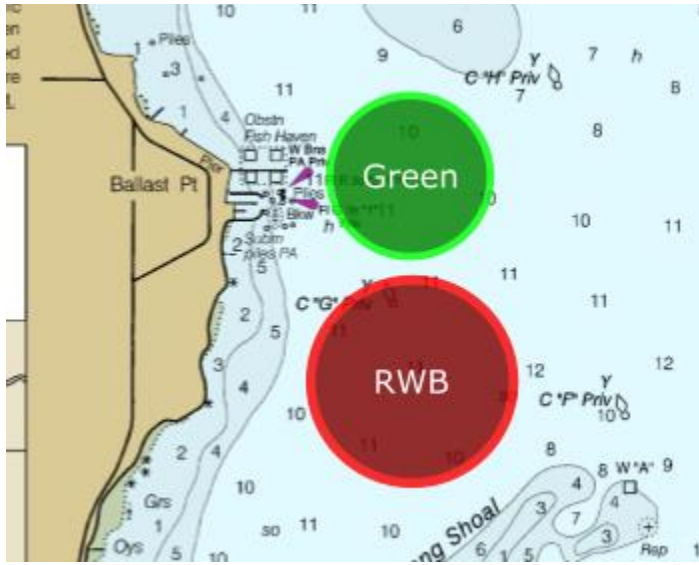
Prizes will be awarded as follows

Overall	1 st , 2 nd , 3 rd
Red, White and Blue	1 st
Green	1 st , 2 nd , 3 rd

18. DISCLAIMER OF LIABILITY

Competitors participate in the regatta entirely at their own risk. See RRS 4, Decision to Race. The organizing authority will not accept any liability for material damage or personal injury or death sustained in conjunction with or prior to, during, or after the regatta.

Appendix A: course Areas



Appendix B: Courses

RWB	Green
<p>Diagram illustrating the RWB course layout. It shows a start line with a boat icon, a 'Finish' line, and three yellow markers labeled 1, 2s, and 2p. Marker 1 is at the top, 2s and 2p are in the middle, and the finish line is at the bottom right.</p>	<p>Diagram illustrating the Green course layout. It shows a start line with a boat icon, a 'Finish' line, and three orange markers labeled 1, 2, and 3. Marker 1 is at the top, 2 is on the left, and 3 is at the bottom. The finish line is in the center.</p>
<p>W1 Start-1-Offset-2p/2s-Finish</p>	<p>T Start-1-2-3-Finish</p>
<p>W2 Start-1-Offset-2p/2s-1-Offset-2p/2s -Finish</p>	