



TAMPA YACHT & COUNTRY CLUB

TYCC Wednesday Night Portsmouth Series

NOR

Series Fall A and Series Fall B

Each Wednesday from September 2nd – October 28th

1 RULES

- 1.1 The regatta will be governed by the rules as defined in *The Racing Rules of Sailing* and the *Portsmouth Yardstick*.

2 ELIGIBILITY AND ENTRY

- 2.1 The regatta is open to all centreboard classes and keel boats 19 feet and under that have registered. There is no entry fee.
- 2.2 Eligible boats may register online at <https://www.regattanetwork.com/event/21162>
- 2.3 The Race Committee may add one design classes in its discretion pending participation.

3 SCHEDULE

- 3.1 Racing will be held each Wednesday this September and October. Two races are scheduled each Wednesday. There will be no race on September 30.
- 3.2 There will be a competitors meeting on August 26.

- 3.3** Fall A
September 2
September 9
September 16
September 23

- Fall B
October 7
October 14
October 21
October 28

- 3.4** First warning signal will sound promptly at 1815. For Fall A and 1800 for Fall B.

4 SAILING INSTRUCTIONS

The sailing instructions will be available online at www.tampayacht.com on the 26th of August.

5 SAILING AREA

- 5.1** Attachment A shows the location of the racing areas.

6 THE COURSES

The diagrams in Attachment B show the courses, including the approximate angles between legs, the order in which marks are to be passed, and the side on which each mark is to be left. The approximate course length will be 25 minutes.

7 SCORING

- 7.1** Each boat's finishing place shall be determined using the North American Portsmouth Yardstick, non-wind adjusted (D-PN).

- 7.2** The Series will use the low points scoring system.

- 7.3** 1 race is required to be completed to constitute a series.

- 7.4** (a) When fewer than 4 races have been completed, a boat's series score will be the total of her race scores.
(b) When from 5 to 6 races have been completed, a boat's series score will be the total of her race scores excluding her worst score.
(c) When 7 or more races have been completed, a boat's series score will be the total of her race scores excluding her two worst scores.

7.5 Competitors undertaking race committee duties may claim average points for 1 race per series.

8 **PRIZES**

Prizes shall be awarded at the discretion of the Race Committee.

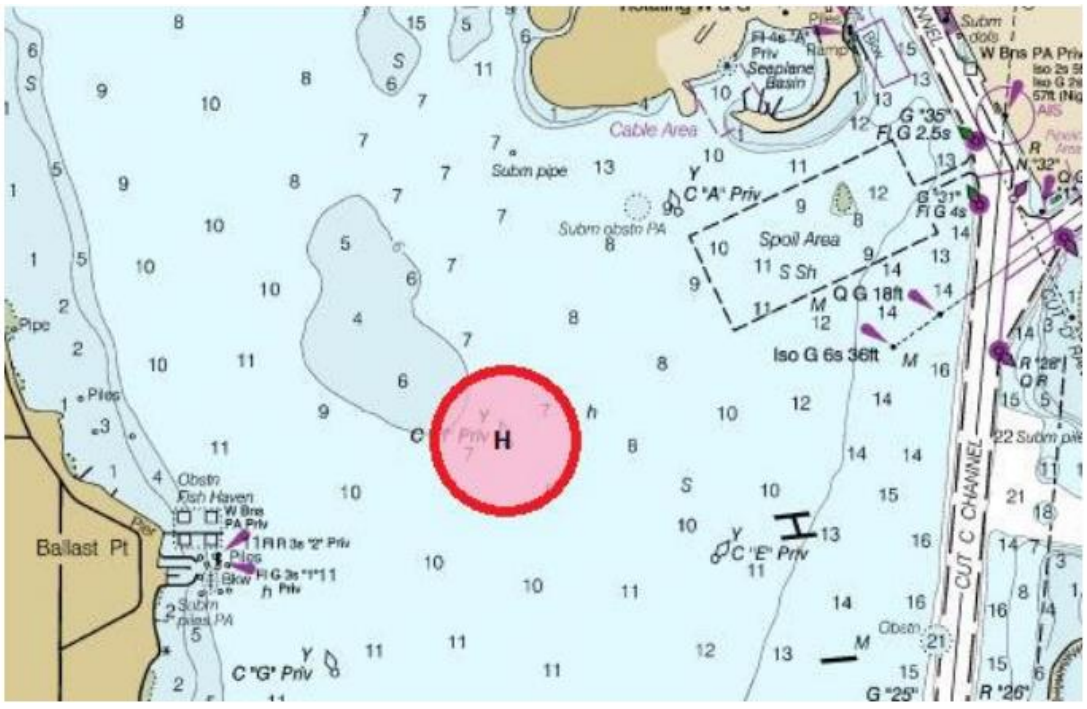
9 **DISCLAIMER OF LIABILITY**

Competitors participate in the regatta entirely at their own risk. See RRS 4, Decision to Race. The organizing authority will not accept any liability for material damage or personal injury or death sustained in conjunction with or prior to, during, or after the regatta. Participants will be required to sign a waiver to register.

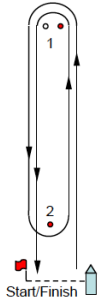
10 **FURTHER INFORMATION**

For further information please contact Kit Fortescue waterfront@tampayacht.com or visit tampayacht.com

A RACING AREA



B COURSE



W1: Start-1-Finish W2: Start-1-2-1-Finish