

**PLUFF MUD Invitational
SEPTEMBER 12-13, 2020**

The Beaufort Yacht & Sailing Club

**SAILING INSTRUCTIONS
FOR THE Laser COURSE**

1. RULES

- 1.1 This regatta will be governed by the rules as defined in *The Racing Rules of Sailing*.
- 1.2 Coaches, parents and competitors are expected to have read and understand the Junior Code of Ethics, which will be enforced.

2. NOTICES TO COMPETITORS

Notices to competitors will be posted on the official notice board located on the screen porch of the clubhouse.

3. CHANGES TO THE SAILING INSTRUCTIONS

- 3.1 On-shore changes to the sailing instructions will be posted within 15 minutes of the close of the competitors' meeting on Saturday and by 9:30 on Sunday.
- 3.2 Changes to the schedule will be posted by 7:00 pm on the day before the change is in effect.
- 3.3 On-the-water changes to the sailing instructions will be made before the warning signal of a race by hoisting code flag "L" with one sound signal and announcing the change verbally.

4. SIGNALS MADE ASHORE

- 4.1 Signals made ashore will be displayed from the club flag pole.
- 4.2 When flag "AP" is displayed ashore, "1 minute" is replaced with "not less than 30 minutes." This changes RRS race signal AP.

5. SCHEDULE:

- 5.1 Saturday 9:30-10:30 check-in
 11:00 competitors' meeting
 12:00 warning signal for first race
- 5.3 Sunday 11:00 warning signal for first race
- 5.4 There is an unlimited number of races scheduled.
- 5.5 On Sunday no warning signal will be given after 3:00.

6. CLASS FLAGS

- 6.1 The flags used for the Laser Radial will be the Laser class flag. The flag for the Laser 4.7 will be a white flag with a black 7 in the center.

7. RACING AREA

The racing area is on the Beaufort River between the McTeer Bridge and the marshes in front of downtown Beaufort.

8. COURSES

- 8.1 The course for the Lasers will be windward/leeward with the Finish being the same as the Start Line. The leeward mark will be a gate located to windward of the start/finish line and is not a mark of the course on the final downwind leg.
- 8.2 The diagram shows the course.

9. MARKS

- 9.1 Marks for the Lasers will be an **Orange Cylinder** at the windward mark and **Yellow Cylinders** as the gate.
- 9.2 The starting mark will be a pin end buoy with staff displaying an orange flag.
- 9.3 The finish mark will be a pin end buoy with staff displaying an orange flag.

10. THE START

- 10.1 Races will be started by using Appendix U (2017-2020 RRS) *Audible-Signal Racing System* with the warning signal made 3 minutes before the starting signal.
- 10.2 The start line will be between the starting mark and an orange flag on the signal boat.
- 10.3 Boats whose warning signal has not been made shall avoid the start area during the start sequence for other classes.
- 10.4 A boat that does not start within 3 minutes after her start signal will be scored Did Not Start (DNS) without a hearing. This changes RRS A4 and A5.
- 10.5 The order of starts for the first race of the day will be 1) Laser Radial 2) Laser 4.7.

11. THE FINISH

- 11.1 The finish line will be between an orange flag on the signal boat and the finish mark.
- 11.2 After finishing a boat shall clear the start/finish area.

12. TIME LIMITS

- 12.1 The time limit for the first boat in a race to sail the course and finish is 50 minutes.
- 12.2 Boats failing to finish within 15 minutes after the first boat in a race sails the course and finishes will be scored Tie Limit Expired (TLE) without a hearing. (See SI 14.5.) This changes RRS 35 and A5.

13. PROTESTS AND REQUESTS FOR REDRESS

- 13.1 A boat intending to protest another boat in the racing area during a race shall notify the other boat immediately of her intent, including the word "protest".
- 13.2 A boat intending to protest another boat shall notify the race committee signal boat as soon as possible after finishing, stating the sail number of the protested boat.
- 13.3 Protest forms are available at the official notice board and shall be submitted there. In this year of Covid-19, protests should be settled on the water.
- 13.4 The protest time limit is 45 minutes after the race committee signal boat docks. The protest time limit (filing deadline) will be posted on the official notice board as soon as practicable.

- 13.5 Protest hearings may be held via conference call if it can't be settled on the water.

14. SCORING

- 14.1 The Low Point Scoring System of RRS Appendix A will apply as revised below.
- 14.2 The number of boats entered in the regatta will be defined as the number of registered boats which subsequently completed competitor Check-In at the regatta venue. This change is added to the first sentence to RRS A2 and A4.2.
- 14.3 One completed race shall constitute a regatta.
- 14.4 When 5 or fewer races have been completed a boat's series score will be the total of her races; when 6 or more races are completed a boat's worst score will be discarded.
- 14.5 Boats scored Time Limit Expired (TLE) shall be awarded points equal to the number of boats sailing the course and finishing within the time limit plus 2.

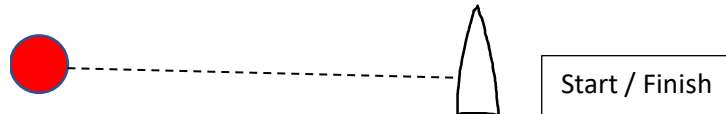
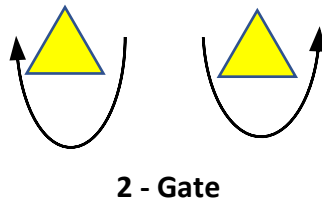
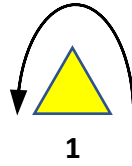
15. SAFETY

- 15.1 A boat that retires from a race or leaves the racing area between races shall notify the race committee as soon as possible.
- 15.2 A personal flotation device shall be worn by all competitors when away from shore.
- 15.3 Closed toe shoes shall be worn while launching and retrieving boats.
- 15.4 The sail number of the boat must be the same as on the entry form.
- 15.5 Competitors shall check in with the race committee upon arriving at the course each day by hailing their sail number and name loudly.
- 15.6 A competitor who will not be racing that day shall notify personnel at the Safety Check Out/In table before the warning signal of the first race of the day.
- 15.7 Immediately upon returning to shore, but not later than the protest time limit, competitors shall sign-in at the Safety Check-Out/In table.
- 15.8 The Race Committee, for breaches of SI 15.1 – 15.7, may assign a penalty which may include Disqualification That Is Not Excludable (DNE) to a boat without a hearing for the first race of the day in which the breach occurred. This changes RRS A5.
- 15.9 Dollies are not to be left on the shore due to tide.

16. EQUIPMENT

- 16.1 Equipment (including sails) may be substituted only with written permission of the race committee.

Laser Course



Laser: W/L 2 (Start, 1, Finish) OR W/L 4 (Start, 1, 2, 1, Finish)

Note: Diagram not to scale. Mark colors and shapes are illustrative only.

Pluff Mud Invitational SEPTEMBER 12-13, 2020

The Beaufort Yacht & Sailing Club

SAILING INSTRUCTIONS FOR THE OPTIMIST COURSE

1. RULES

- 1.1 This regatta will be governed by the rules as defined in *The Racing Rules of Sailing* (RRS).
- 1.2 Coaches, parents and competitors are expected to have read and understand the Junior Code of Ethics, which will be enforced.

2. NOTICES TO COMPETITORS

Notices to competitors will be posted on the official notice board located on the screen porch of the clubhouse.

3. CHANGES TO THE SAILING INSTRUCTIONS

- 3.1 On-shore changes to the sailing instructions will be posted within 15 minutes of the close of the competitors' meeting on Saturday and by 9:30 on Sunday.
- 3.2 Changes to the schedule will be posted by 7:00 pm on the day before the change is in effect.
- 3.3 On-the-water changes to the sailing instructions will be made before the warning signal of a race by hoisting code flag "L" with one sound signal and announcing the change verbally.

4. SIGNALS MADE ASHORE

- 4.1 Signals made ashore will be displayed from the club flag pole.
- 4.2 When flag "AP" is displayed ashore, "1 minute" is replaced with "not less than 30 minutes." This changes RRS race signal AP.

5. SCHEDULE

- 5.1 Saturday 9:30 – 10:30 check-in
 11:00 competitors' meeting
 12:00 warning signal for first race
- 5.2 Sunday 11:00 warning signal for first race
- 5.3 There is an unlimited number of races scheduled.
- 5.4 On Sunday no warning signal will be given after 3:00.

6. CLASS FLAGS

- 6.1 Optimist RWB Square Blue Flag
- 6.2 Optimist Green Green Optimist Class Flag

7. RACING AREA

The racing area is on the Beaufort River within 500 yards of the BYSC dock.

8. COURSE

- 8.1 The course will be a trapezoid with the start/finish line in the windward leg.
- 8.2 The diagram shows the course.
- 8.3 The start/finish line shall not be crossed except to start or finish.
- 8.4 The long weather mark is for the Optimist red, white and blue class. The short weather mark is for the Optimist green class.
- 8.5 The course will not be shortened. This changes RRS 32.

9. MARKS

- 9.1 Marks will be Orange Cylinders.
- 9.2 Mark 1G will be a Green Cylinder.
- 9.4 The start/finish mark will be a pin end buoy with staff displaying an orange flag.

10. THE START

- 10.1 Races will be started by using Appendix U (2017-2020 RRS) *Audible-Signal Racing System* with the warning signal made 3 minutes before the starting signal.
- 10.2 The start line will be between the pin end start/finish mark and an orange flag on the signal boat.
- 10.3 Boats whose warning signal has not been made shall avoid the start area during the start sequence for other classes.
- 10.4 A boat that does not start within 3 minutes after her start signal will be scored Did Not Start (DNS) without a hearing. This changes RRS A4 and A5.
- 10.5 The order of starts for the first race of the day will be 1) Optimist Red, White and Blue; and 2) Optimist Green.

11. THE FINISH

- 11.1 The finish line will be the same as the start line.
- 11.2 After finishing a boat shall keep clear of the start/finish area.

12. TIME LIMITS

- 12.1 The time limit for the first boat in a race to sail the course and finish is 50 minutes.
- 12.2 Boats failing to finish within 15 minutes after the first boat in a race sails the course and finishes will be scored Time Limit Expired (TLE) without a hearing. (See SI 14.5.) This changes RRS 35 and A5.

13. PROTESTS AND REQUESTS FOR REDRESS

- 13.1 A boat intending to protest another boat in the racing area during a race shall notify the other boat immediately of her intent, including the word "protest".
- 13.2 A boat intending to protest another boat shall notify the race committee signal boat as soon as possible after finishing, stating the sail number of the protested boat.
- 13.3 Protest forms are available at the official notice board and shall be submitted there. In this year of Covid-19, protests should be settled on the water.
- 13.4 The protest time limit is 45 minutes after the race committee signal boat docks. The protest time limit (filing deadline) will be posted on the official notice board as soon as practicable.

14. SCORING

- 14.1 The Low Point Scoring System of RRS Appendix A will apply as revised below.
- 14.2 The number of boats entered in the regatta will be defined as the number of registered boats which subsequently completed competitor check-in at the regatta venue. This change is added to the first sentence to RRS A2 and A4.2.
- 14.3 One completed race shall constitute a regatta.
- 14.4 When 5 or fewer races have been completed a boat's series score will be the total of her races; when 6 or more races are completed a boat's worst score will be discarded.
- 14.5 Boats scored Time Limit Expired (TLE) shall be awarded points equal to the number of boats sailing the course and finishing within the time limit plus 2, but not to exceed the number of boats entered in the race.

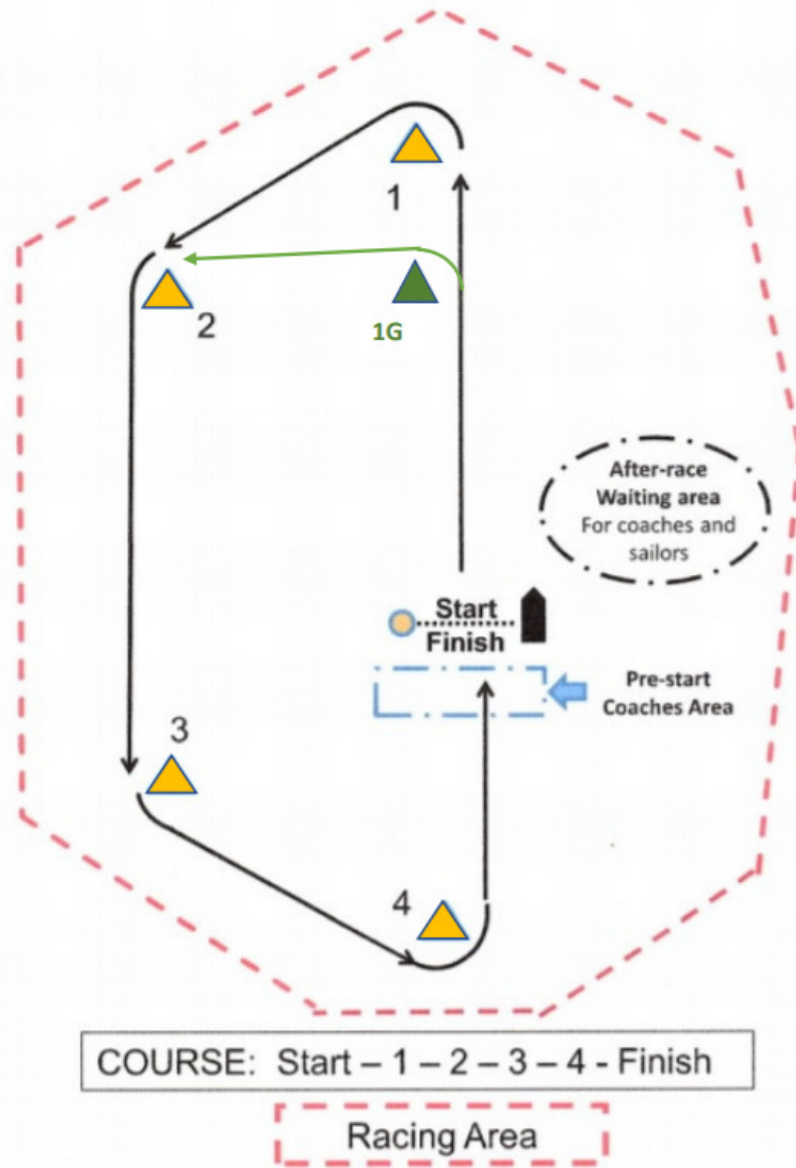
15. SAFETY

- 15.1 A boat that retires from a race or leaves the racing area between races shall notify the race committee as soon as possible.
- 15.2 A personal flotation device shall be worn by all competitors when away from shore.
- 15.3 Closed toe shoes shall be worn while launching and retrieving boats.
- 15.4 The sail number of the boat must be the same as on the entry form.
- 15.5 Competitors shall check in with the race committee upon arriving at the course each day by hailing their sail number and name loudly.
- 15.6 A competitor who will not be racing that day shall notify personnel at the Safety Check Out/In table before the warning signal of the first race of the day.
- 15.7 Immediately upon returning to shore, but not later than the protest time limit, competitors shall sign-in at the Safety Check-Out/In table.
- 15.8 Dollies are not to be left on the shore due to tide.
- 15.9 The Race Committee, for breaches of SI 15.1 – 15.8, may assign a penalty which may be as severe as Disqualification That Is Not Excludable (DNE) to a boat without a hearing for the first race of the day in which the breach occurred. This changes RRS A5.

16. EQUIPMENT

Equipment (including sails) may be substituted only with permission of the Race Committee.

Simple Trapezoid Course



Note: Diagram not to scale. Mark colors and shapes are illustrative only.
