



www.RockHallYachtClub.org

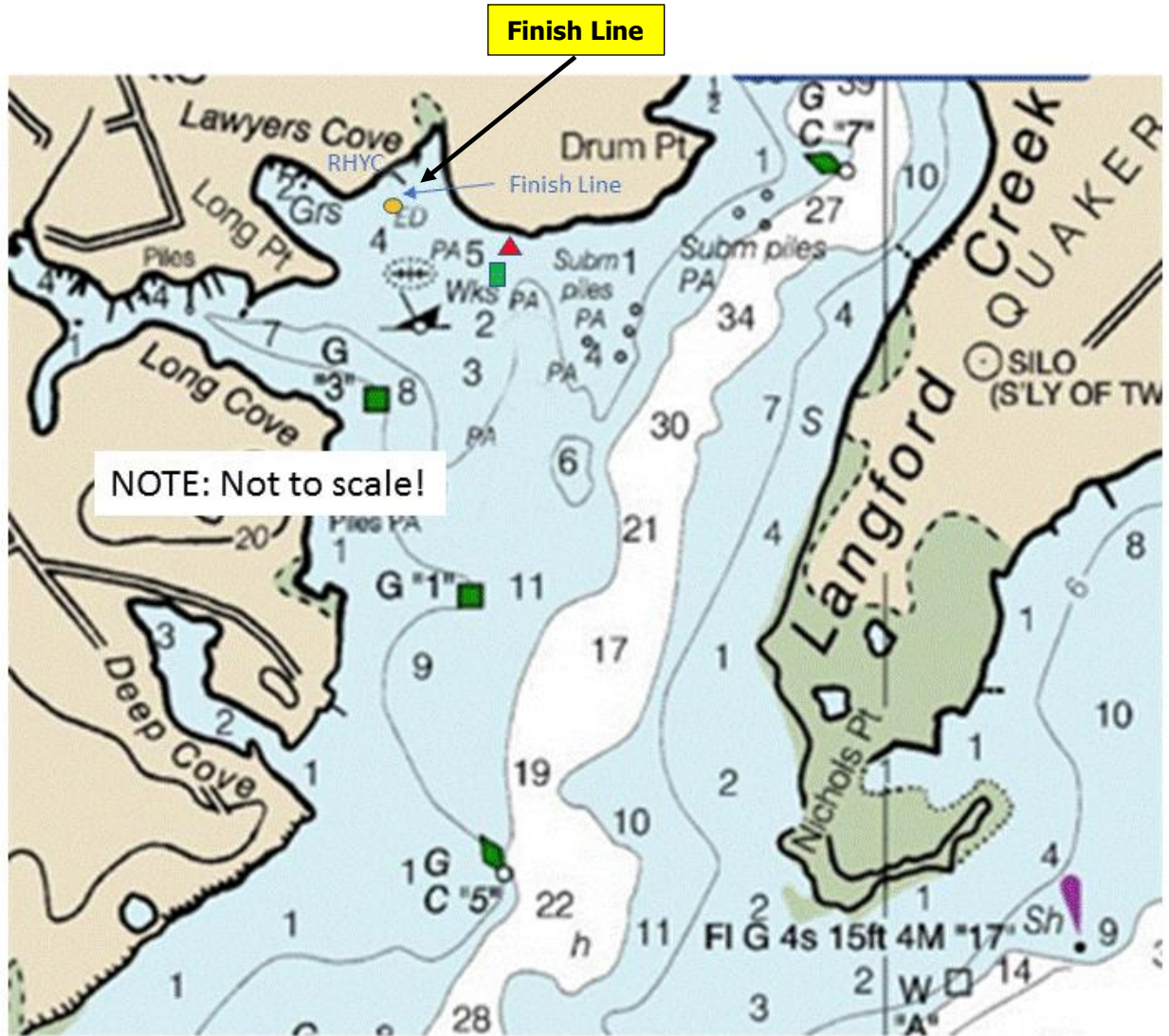
## Down River Race Sailing Instructions September 25, 2020

- Rules:** The race will be governed by the Racing Rules of Sailing except as modified by these sailing instructions. The race will be handicapped using the Portsmouth system as published by US Sailing. It is each skipper's responsibility to determine the safety of participation and continuation of the race.
- Entries:** All competing boats must register and pay online by Thursday, September 24, 2020 at [www.rockhallyachtclub.org](http://www.rockhallyachtclub.org) or [www.regattanetwork.com](http://www.regattanetwork.com). There will be no on-site registration. Please clearly identify the type of boat and rig you are sailing on the registration form.
- Skippers Meeting:** Thursday, September 24<sup>th</sup> at 1900 via ZOOM meeting. Registrants will be sent a Zoom invitation via email on Wednesday, September 23<sup>rd</sup>.
- Boat Identification:** All competitors must have a piece of colored ribbon (given out at CRY&CC launching area) attached to their standing rigging for the duration of the race. All competitors must complete a registration form with sail number and that sail number must be displayed on the sail. If need be, pick a number, put it on your registration form and then use colored tape to put it on your sail. **All boats will check in with the race committee prior to the start by sailing by the dock and hailing sail number.**
- Starting Line:** Between the RED Flag on the CRY&CC dock and the orange mark set opposite near the Queen Anne County shore.
- The Start:** All boats start together. The starting time is 1100 hours. The Start is in accordance with RRS 26, with the following alterations:
  - (about 1 minute before warning). Repeated sound for attention
  - 5 minutes - One sound plus RHYC Burgee flag UP
  - 4 minutes - One sound plus P flag (Preparatory, blue with white center square) UP also
  - 1 minute - One sound and P flag DOWN
  - START - One sound and RHYC Burgee flag DOWN
- Recalls:** Shall be in accordance with Racing Rule 29
- The Course:** Down the Chester River to the Mouth of Langford Bay and through the floating red and green day marks marking the channel entrance to the RHYC. It is not necessary to honor the government marks along the river. Be advised that water depths may be shallow outside the marked channel. The pertinent Chart is NOAA12272. The use of GPS devices is permitted for all classes in this race.
- The Finish:** Between the red flag on the flagpole at the end of the RHYC **fixed pier floating dock** and an orange mark. See Figure 1. If a shortened course is needed the finish will be between a RC boat and dropped mark. The RC at the finish line will indicate course change with sound and visual signal per rule 32.2.
- Time Limit:** If no boat has finished before 1600, the RC may elect to shorten or abandon the race. The RC can shorten the course at their discretion prior to 1600 in order to maintain safety for all competitors. The Race Committee will be in place at the Finish Line until 1600 (4:00 pm) or until the last registered boat crosses the line. If you finish after 1600, please record your finish time and provide to the Race Committee **in the RHYC Clubhouse via email to [todd.steffes@gmail.com](mailto:todd.steffes@gmail.com) and [zephyr.sherman@outlook.com](mailto:zephyr.sherman@outlook.com)**. If you decide to retire from the race, please flag down or call a RHYC chase boat to let the Race Committee know. VHF Channel **69 68**. Cell# 631-495-6593.
- Alternative Penalties:** Rule 44(1)(2) (Two-turns penalty) is modified to require a One-turn. Skipper MUST inform the committee boat of any intended protest at the time of finishing.
- Towing safety:** All vessels shall be equipped with a tow line of 25' or more to allow for safe towing.
- Prizes:** Results will be posted, and awards will be available for pick up at the RHYC Pavilion on Saturday, September 26<sup>th</sup> after 4:00pm.



**Astronomical tide predictions for September 25, 2020:**

Chestertown, MD:	Low 10:13 am	High 03:30 pm
Cliff's Point, MD:	Low 09:35 am	High 02:19 pm



**Figure 1. The Finish off Rock Hall Yacht Club**