



Sailing Instructions

2020 Annual Summer One-Design Regatta

September 26, 2020

Rock Hall Yacht Club
22759 McKinleyville Road
Rock Hall, MD 21661

RockHallYachtClub.org

1. RULES

1.1 The regatta will be governed by rules as defined in the current Racing Rules of Sailing and the rules of the appropriate class, unless changed by these sailing instructions, addendum to these Sailing Instructions, or by notices to competitors.

2. ENTRIES

2.1 Competitors may enter by completing an entry form with the organizing authority by the time and method prescribed in the NOR.

2.2 Eligibility requirement for the helmsperson is current membership in the respective class association unless waived by the class.

3. NOTICES TO COMPETITORS

3.1 Notices to competitors will be posted on the official notice board at the beach

3.2 A skipper's meeting will be held through Zoom at 1900 on Friday, September 25th as designated in the NOR.

4. CHANGES IN SAILING INSTRUCTIONS

4.1 Changes to these sailing instructions made on the first day of a series will be posted by 0900 on the day it will take effect

5. SIGNALS MADE ASHORE

5.1 All visual signals made ashore will be flown on the RHYC flagpole.

5.2 Code flag 'AP' with two sounds means 'The race is postponed'. The first race warning signal will be not less than 30 minutes after 'AP' is lowered (with one sound). This changes RRS Signal AP.

5.3 Code flag 'B' hoisted with one sound means 'Protest time has begun'. Yachts filing a protest must do so within one hour of hoisting of 'B'. When 'B' is lowered, it means 'The time to file protests has ended'. This changes RRS Signals and RRS 61.3.

6. SCHEDULES OF RACES

6.1 Five races are intended for a one-day weekend regatta. Fewer races may be held at the race committee's discretion.

6.2 No warning signal will be made after 1600 on Saturday or 1500 on Sunday if used as a rain date.

7. RACING AREAS

7.1 Racing will take place in the Chester River opposite Langford Creek, see Attachment 2, and as specified during the skipper's meeting.

7.2 The course RCs will ensure that marks are sufficiently separated to minimize interference between mono-hull and multi-hull classes.

8. THE COURSE

8.1 The possible courses are shown in Attachment 1. The course will be designated by the RC by black letter(s) and number(s) on a white board onboard the RC boat.

8.2 When an offset mark to be rounded to port is used in conjunction with mark 1, announcement will be made at the skipper's meeting and notice posted.

8.3 For multiclass events, courses and classes will be divided as shown by Addendum A to this SI.

9. MARKS

9.1 Marks will be green or orange inflated tetrahedrons.

9.2 Start and finish line pin marks will be small or mid-size orange or yellow spherical or cylindrical marks.



Sailing Instructions

Sept 26, 2020

10. THE START

- 10.1 If there are fewer than five boats in a class, the Race Committee may combine that class with another class.
- 10.2 Races will be started using rule RRS US Sailing Prescription Appendix U.
- 10.3 The starting line will be between a staff displaying a red flag on the race committee signal boat and the course side of the pin end mark.
- 10.4 A boat may not start a race later than 5 minutes after her class starting signal and will be scored 'Did Not Start' for that race. This is in addition to the prescriptions of RRS Appendix A.
- 10.5 Recalls and penalties will be signaled per RRS US Sailing Prescription Appendix U. Failure to hear a hail or the order in which hails are made will not be grounds for redress.

11. CHANGE OF THE NEXT LEG OF THE COURSE

- 11.1 There will be no change marks used. This changes RRS 33
- 11.2 The position of the finishing line may be changed providing that the finishing boat is in place before any competitor rounds the previous mark
- 11.3 A single gate mark may be moved or adjusted without a signal.

12. TIME LIMIT

- 12.1 The time limit for each race will be 90 minutes for the first boat to finish. Boats finishing more than 30 minutes after the first yacht finishes or after the time limit, whichever is later will be scored 'Did Not Finish'. When the order of the remaining finishers in a race is not considered to be in doubt by the RC, boats may be scored in their position at the discretion of the RC. Those boats will be notified of that decision and instructed to return to the starting area by a RC auxiliary boat. This changes RRS 35, A4, and A5.

13. THE FINISH

- 13.1 The finishing line will be between a staff displaying a blue flag on a race committee boat and a finishing mark.

14. PROTESTS

- 14.1 A boat intending to file a protest shall notify the Race Committee after finishing the race in question. Protest forms are available in the RHYC Clubhouse and must be presented there within one hour after the race committee has hoisted code flag 'B' on shore. This changes RRS 61.1.
- 14.2 Hearings will be held as soon as possible after racing each day.
- 14.3 Protest notices will be posted as soon as possible after the protest time limit to inform competitors where and when there is a hearing in which they may be involved or named as witnesses.
- 14.4 Breaches of instructions 10.4, 17, 18, 19, 20, 22, 23 and 24 will not be grounds for a protest by a boat. This changes rule 60.1(a).

15. SCORING

- 15.1 Regattas will be scored in accordance with the Low Point System of RRS Appendix A. Exceptions for a specific class may be made by request.
- 15.2 One race constitutes a regatta.
- 15.3 If at least 5 races are completed in a class, each boat's worst score will be excluded from its series score. Exceptions to this are listed below This changes RRS A2.1.
- 15.4 All Catamaran Classes: if four or more races have been completed, a boat's series score will be the total of her race scores excluding her (1) one worst race score.

16. ALTERNATIVE PENALTIES

- 16.1 A boat may take a One-Turn Penalty as the result of having broken one or more rules of Part 2 in an incident while racing. This modifies RRS 44. Yachts touching any mark including the starting/finishing mark will be required to complete one-turn.

17. SAFETY REGULATIONS

- 17.1 A boat shall carry all equipment required by her class rules. At a minimum, she shall carry one USCG approved PFD for each person on board.
- 17.2 All monohull boats shall have available a line at least 25 feet long which can be used for towing.
- 17.3 Appropriate protective clothing shall be worn by competitors at all times that the water temperature is below 60 degrees F. Either wetsuits or dry-suits may be appropriate for this purpose, but skippers are solely responsible for the safety of their crew, their vessel and themselves.
- 17.4 Notwithstanding the above, the race committee may require wearing personal buoyancy equipment by flying flag "Y", and 'DSQ' a yacht whose crew does not comply. This changes RRS A4.1 and A5.



Sailing Instructions

Sept 26, 2020

18. REPLACEMENT OF CREW OR EQUIPMENT

- 18.1 Substitution of competitors will not be allowed without prior written approval of the Race Committee.
- 18.2 Substitution of damaged or lost equipment will not be allowed unless authorized by the Race Committee. Requests for substitution of equipment shall be made to the Race Committee at the first reasonable opportunity.

19. EQUIPMENT AND MEASUREMENT CHECKS

- 19.1 A boat or equipment may be inspected at any time for compliance with the class rules and sailing instructions. On the water, a boat can be instructed by a RC equipment inspector or measurer to proceed immediately to a designated area for inspection.

20. RADIO COMMUNICATION

- 20.1 Except in an emergency, a boat shall neither make radio transmissions while racing nor receive radio communications not available to all boats. This restriction also applies to mobile telephones. This changes RRS 41.

21. AWARDS

- 21.1 Awards will be presented at the Awards Ceremony after the conclusion of racing on the last day of the event. The number of trophies in each class will be based on pre-registrations.

22. INSURANCE

- 22.1 Each participating boat shall be insured with valid third-party liability insurance with a minimum coverage of \$100,000 (USD) per event or the equivalent.

23. SPECIAL NOTES

- 23.1 Any boat receiving 'hands on' assistance from rescue/mark boats will be scored Did Not Finish. This changes RRS rule A5. The RC may decide when a boat or crew needs assistance. This changes RRS 41.
- 23.2 The RC may request redress for competitors who exhibit extraordinary sportsmanship.

24. DISCLAIMER OF LIABILITY

- 24.1 Competitors participate in the regatta entirely at their own risk per RRS 4, Decision to Race. It is the personal responsibility of each competitor to determine their level of safety. If wind, wave or water conditions make you doubtful of your ability to handle the conditions safely, it is your decision and your decision only to continue sailing or to retire. The organizing authority will not accept any liability for material damage or personal injury or death sustained in conjunction with, prior to, during, or after the regatta.



Sailing Instructions

Sept 26, 2020

ADDENDUM A. RHYC One Design Regatta Courses

A-1. Short Course - Mono-hull classes as identified at the Skipper's Meeting and Hobie Waves

A-1.1 MARKS

The weather mark will be a green inflated tetrahedron and is designated as W-Green on the course diagram.
The leeward gate will be orange inflated tetrahedrons.
Start and finish line pin marks will be small or mid-size orange spherical or cylindrical marks.

A-1.2 CLASS FLAGS

Class flags will be used to start each class; these will be displayed at the Skippers Meeting.

A-2. Long Course - Multi-hull classes as identified at the Skipper's Meeting, excluding Hobie Waves

A-2.1 MARKS

The weather mark will be an orange inflated tetrahedron and is designated as W-Orange on the course diagram.
The leeward gate will be orange inflated tetrahedrons.
Start and finish line pin marks will be small orange spherical marks.

A-2.2 CLASS FLAGS

Class flags will be used to start each class; these will be displayed at the Skippers Meeting.



Sailing Instructions

Sept 26, 2020

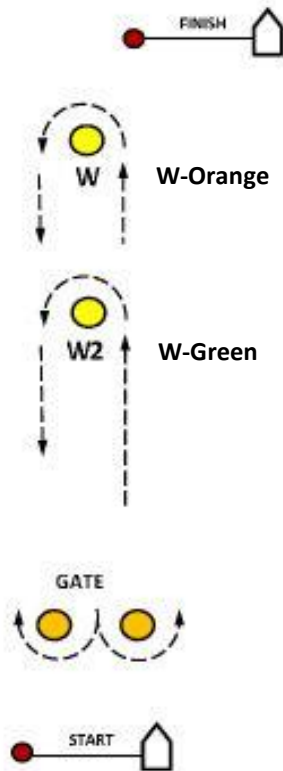
ATTACHMENT 1. Course Diagrams

Course W

(Windward/Leeward/
Windward)

W1 – Will designate one lap.
Multi-hull Course 5G

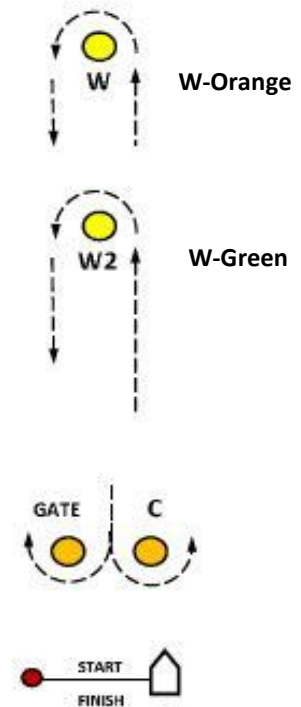
W2 – Will designate two laps.
Multi-hull Course 6G
(Start-W-Gate-W-Gate-Finish)



Course D (Downwind Finish),

D1 – Will designate one lap.
Multi-hull Course 1G

D2 – Will designate two laps
Multi-hull Course 2G
(Start-W-Gate-W-Finish)

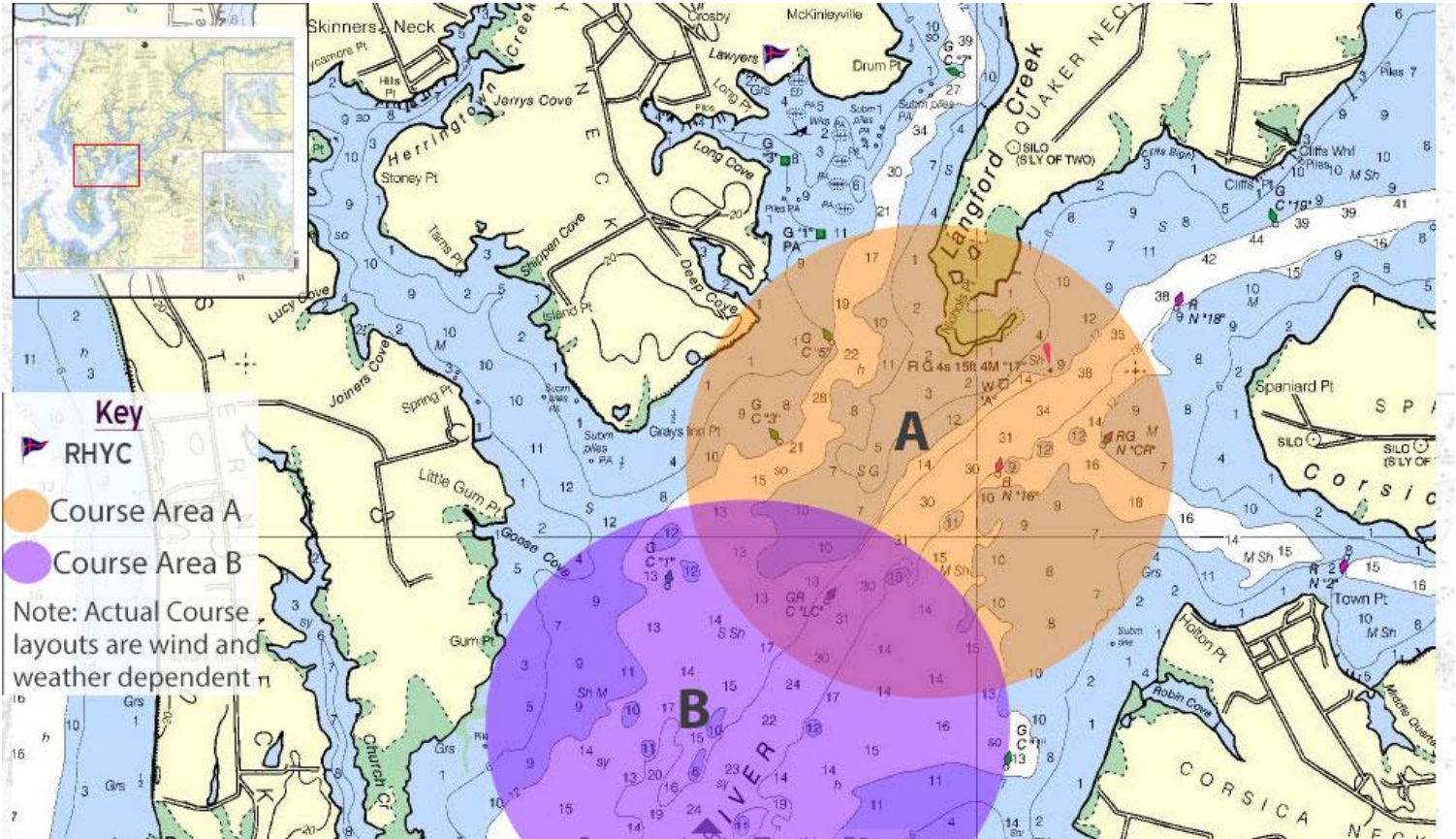




Sailing Instructions

Sept 26, 2020

ATTACHMENT 2. Course Area





APPENDIX U

AUDIBLE-SIGNAL RACING SYSTEM

This appendix is a US Sailing prescription.

US Sailing prescribes that when the sailing instructions so state the Audible-Signal Racing System described below shall be used. It is recommended primarily for small-boat racing or when race committee resources are limited. Rules in this appendix replace rule 26 and permit changes to Race Signals and the corresponding rules in Part 3.

U1 Any Race Signal may be made by hailing, in which case the corresponding visual signal may also be used, but not its designated sound signal.

U2 A series of short sounds may be made at any time to call attention to a hail or a visual signal

U3 The starting sequence shall consist of the following sound signals made at the indicated times. These signals shall be timed from their **commencement and shall govern, even if visual signals are also used.**

U3 Signal	Sound	Time before start
Attention	Series of short sounds	Before the warning
Warning	3 long	3 minutes
Preparatory	2 long	2 minutes
	1 long, 3 short	1 minute, 30 seconds
	1 long	1 minute
	3 short	30 seconds
	2 short	20 seconds
	1 short	10 seconds
	5 short, 1 second apart	5 – 4 – 3 – 2 – 1 seconds
Starting	1 long	0

U4 Individual recalls shall be signalled by hailing the sail number (or other distinguishing feature) of each recalled boat. Flag X need not be displayed.

U5 Failure to hear an adequate hail or sound signal shall not be grounds for redress. This changes rule 62.1.