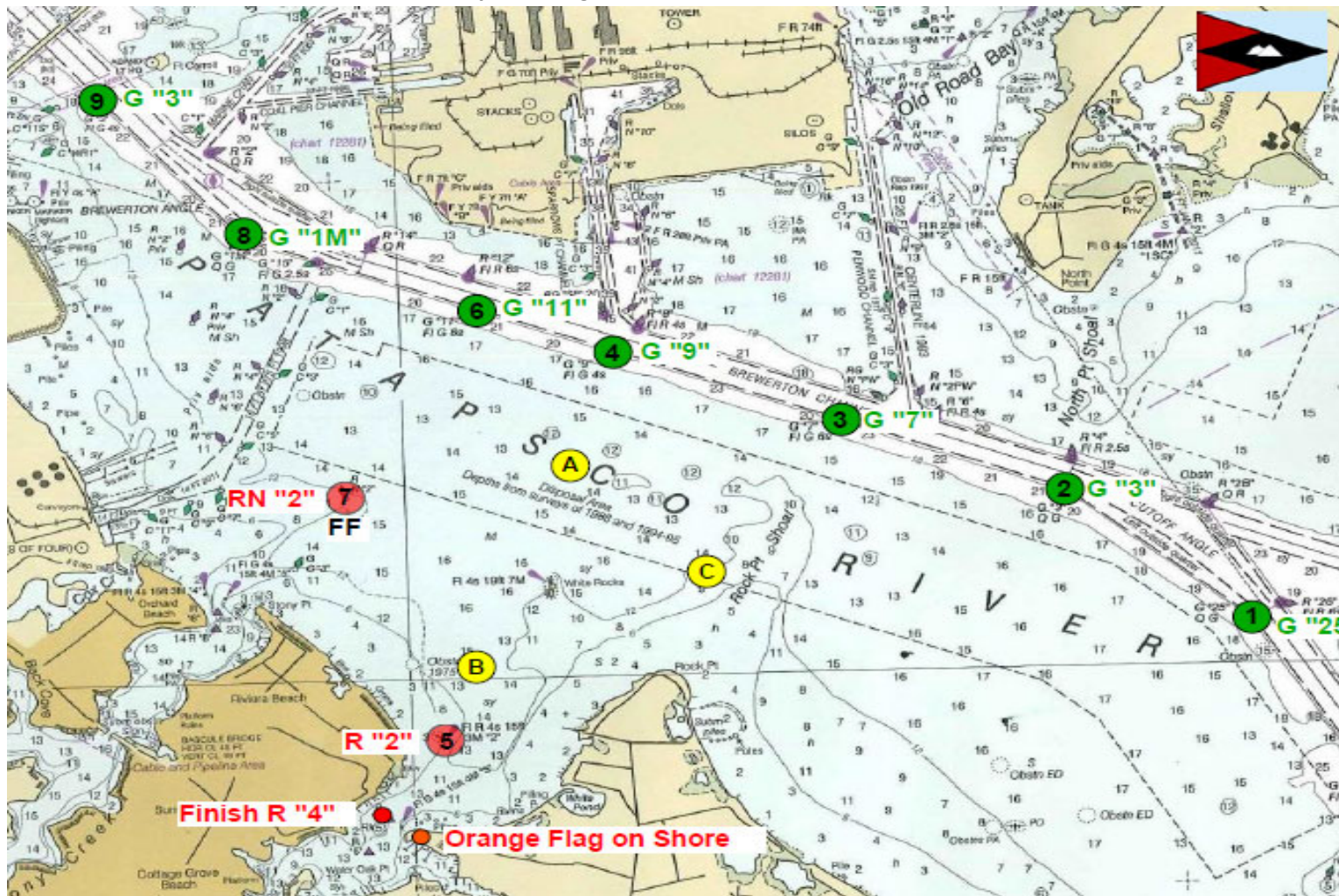


MYC Challenge Race Courses

Course	Start	1st Mark	2nd Mark	Finish*	Length (nm)
1	RCRA "B"	RCRA 8 (G "1M")	RCRA "C"	Rock Creek R "4"	6.17
2	RCRA "B"	RCRA 6 (G "11")	RCRA "C"	Rock Creek R "4"	4.76
3	RCRA "B"	RCRA "A"	RCRA "C"	Rock Creek R "4"	3.30

leave all marks to starboard

*Finish line is between Rock Creek R "4" and yellow flag on MYC shore.



		TO					
		A	B	C	6	8	Finish
		N39 10.902 W076 29.291	N39 10.117 W076 29.706	N39 10.500 W076 28.500	N39 11.690 W076 29.621	N39 12.050 W076 30.777	N39 09.360 W076 30.125
		YC "A"	YC "B"	YC "C"	G "11"	G "1M"	R "4"
FROM	A		214° 0.85	123° 0.74	354° 0.83	303° 1.63	
	B	034° 0.85		067° 1.01	014° 1.58	325° 2.10	
	C	303° 0.74	247° 1.01		323° 1.47	300° 2.36	216° 1.71
	6	174° 0.83	194° 1.58	143° 1.47		280° 0.97	
	8	123° 1.63	145° 2.10	120° 2.36	100° 0.97		
	Finish	123° 1.63	145° 2.10	120° 2.36	100° 1.00		

Course in Magnetic Degrees