



# Fall Opti Scrimmage #1

September 26, 2020

Organizing Authority - Davis Island Youth Sailing Foundation,

Tampa Yacht and Country Club

## SAILING INSTRUCTIONS

### 1. RULES

The regatta will be governed by the rules as defined in the *Racing Rules of Sailing*.

### 2. NOTICES TO COMPETITORS

Notices to competitors will be posted on the official notice board on the west exterior wall of the lower level of the clubhouse.

### 3. CHANGES TO THE SAILING INSTRUCTIONS

Any change to the sailing instructions will be posted before 0830 on Saturday 9/26/20. Team coaches will be notified of any change to the schedule of races before 2000 on 9/25/20.

### 4. SIGNALS MADE ASHORE

4.1 Signals made ashore will be displayed from the flagpole at the west end of the property.

4.2 When flag "AP" is displayed ashore "1 minute" is replaced by "not less than 45 minutes" in the race signal "AP".

### 5. SCHEDULE OF RACES

The first warning signal for the both the RWB and Green Fleet courses will be 1000. No warning signal for additional races will be made after 1600.

### 6. CLASS FLAGS, RACING AREAS, MARKS

The class flags, racing areas, and marks are described in Attachment A.

### 7. THE COURSES

7.1 The diagrams in Attachment B show the courses, including the approximate angles between legs, the order in which marks are to be passed, and the side on which each mark is to be left.

7.2 No later than the warning signal, the race committee signal vessel will display the course designation on a white board.

### 8. THE START

8.1 The starting line will be between a staff displaying an orange flag on the port side of the race committee boat and the course side of the port-end starting mark.

8.2 A boat may not start later than 5 minutes after the starting signal.

8.3 RWB course starts will be in accordance with Rule 26. Five Minute Starting Sequence.

8.4 Green Fleet course starts will be in accordance with Appendix U Audible Signal Racing System. Three Minutes.

### 9. RECALLS

9.1 When an individual recall is signaled the Race Committee will attempt to hail the sail numbers of boats that are OCS. The timing, order or omission of such hails or the failure of a boat to hear a hail shall not be considered an improper action by the race committee under 62.1.

9.2 If any starting penalty flag is displayed, the Race Committee may hail OCS boats at any time during the final minute before the starting signal.

### 10. CHANGE OF THE NEXT LEG OF THE COURSE

To change the next leg of the course, the race committee will move the original mark (or the finishing line) to a new position.

### 11. THE FINISH

The finishing line will be between a staff displaying an orange flag on a race committee vessel and the course side of the finishing mark.

## **12. TIME LIMITS**

- 12.1. The time limit for the first boat in each race to sail the course and finish is 60 minutes.
- 12.2. Boats still racing more than 15 minutes after the first boat sails the course and finishes may be "finished in place" by the race committee.

## **13. PROTESTS AND REQUESTS FOR REDRESS**

- 13.1. Add to RRS 61.1(a) "The protesting boat shall inform the Race Committee of the boat(s) being protested at the finishing line immediately after finishing."
- 13.2. Protest forms are available at the Regatta Room. Protests and requests for redress or reopening shall be delivered there within 60 minutes after the race committee finish vessel docks. The docking time will be posted.
- 13.3. Notices will be posted within 15 minutes after the protest time limit to inform competitors of hearings in which they are parties or named as witnesses. Protests will be heard in the approximate order of receipt in the Regatta Room.
- 13.4. Notices of protests by the race committee or protest committee will be posted to inform boats under RRS 61.1(b).
- 13.5. A request for redress based on a protest committee decision shall be delivered no later than 30 minutes after the decision was posted. This changes RRS 62.2.
- 13.6 Breaches of SI 15.1, 15.2, 15.3, 15.4, 16.1, 16.2 will not be grounds for a protest by a boat. This changes RRS 60.1(a). Penalties for these breaches may be less than disqualification if the protest committee so decides.

## **14. SCORING**

- 14.1. It is the intention of the race committee to conduct as many races as practical each day. One race for a class or fleet must be completed to constitute a regatta for that class or fleet.
- 14.2. When fewer than five races have been complete, a boat's series score will be the total of her race scores. When five or more races have been completed, a boat's series score will be the sum of her race scores excluding her worst score.

## **15. SAFETY REGULATIONS**

- 15.1. Prior to the warning signal for the first race, each boat shall sail on *starboard* tack past the stern of the race committee signal vessel, and hail her sail number until acknowledged by the race committee. Failure to comply with this instruction will result in a 20% penalty for the first race that day.
- 15.2. A boat retiring from a race or leaving the course before racing for the day is completed, shall notify the race committee before leaving the course, or

when that is impossible, an official at DIYC immediately after arrival ashore. Boats failing to do so may be protested by the race committee, and may result in disqualification of a boat from the day's racing.

- 15.3. All competitors shall wear a PFD at all times while on the water (except while effecting a change of clothing or personal gear). Flag Y will not be flown.
- 15.4. The Principal Race Officer and the Safety Officer will monitor VHF channel 73.

## **16. SUPPORT BOATS**

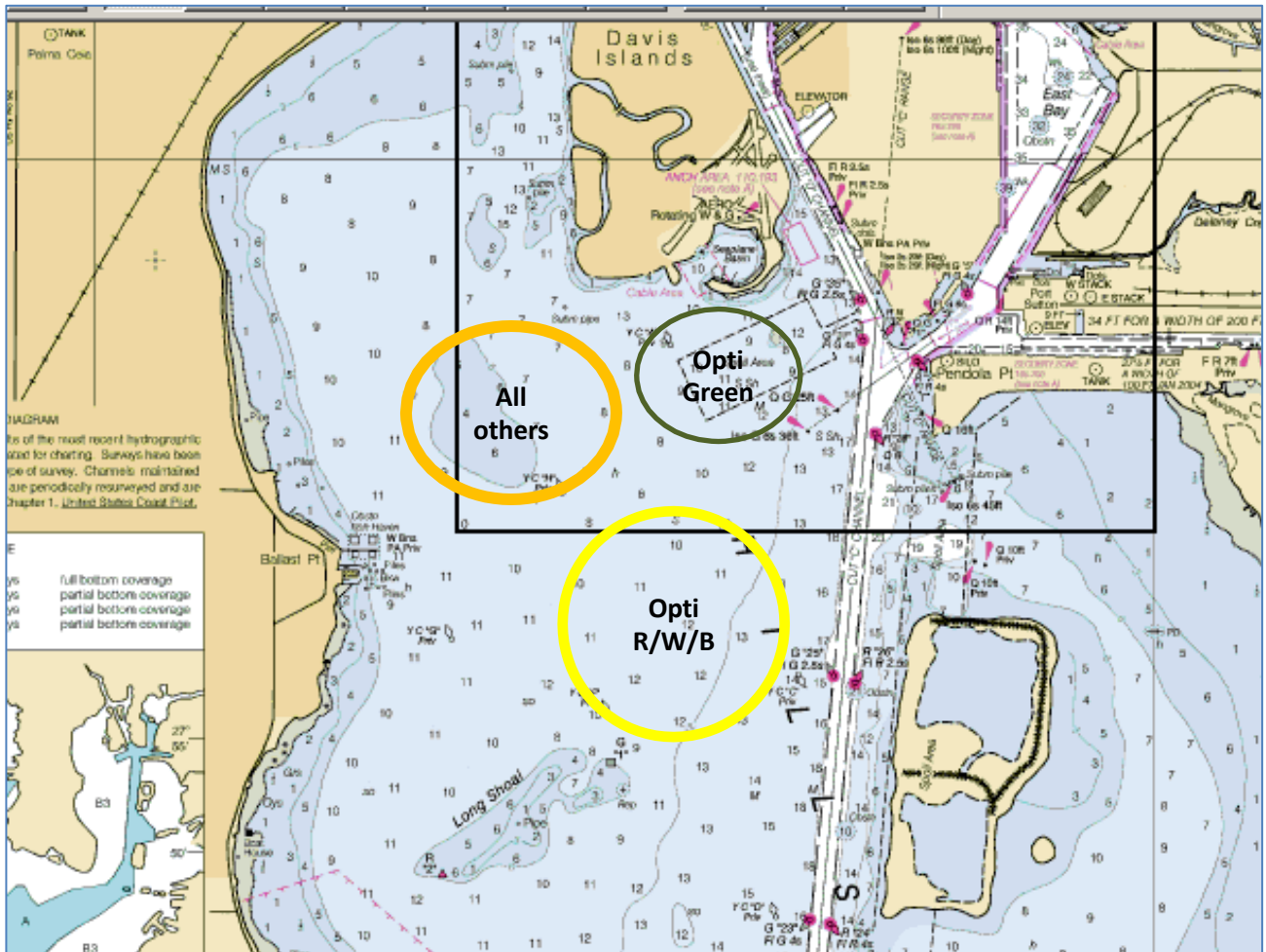
- 16.1. Except for Opti Green, team leaders, coaches and other support personnel shall stay outside areas where boats are racing from the time of the preparatory signal for the first start until all boats have finished or retired or the race committee signals a postponement or abandonment.
- 16.2. Coaching of Opti Green fleet competitors while racing is permitted, however coaching shall be limited to skippers in the bottom half of the fleet in any given race. Coach boats shall neither create wakes nor otherwise interfere with competitors. Coaches shall provide fair and consistent support to all competitors, not just their team or sailor. Violation of this instruction may result in any penalty that the protest committee deems appropriate, up to, and including the disqualification of the coached skipper from the regatta.

## **17. DISCLAIMER OF LIABILITY**

Competitors participate in the regatta entirely at their own risk. See RRS 4, Decision to Race. The organizing authority will not accept any liability for material damage or personal injury or death sustained in conjunction with or prior to, during, or after the regatta.

# Attachment A

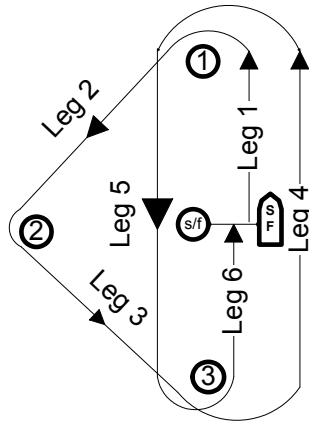
## Racing Areas, Mark Descriptions, Class Flags, Starting Sequence



Course	VHF Channel	Mark Descriptions	Class Flags	Starting Sequence
Opti Green	5	Marks 1,2,3 - Green tetrahedrons Start/finish – Red Tetrahedron	Opti Green - White G on Green background	Appendix U Audible Signal Racing System – 3 minute
Opti R/W/B	69	Marks 1,2,3 – Yellow West Marine Balls Start/Finish – Orange Tetrahedron	Opti R/W/B - Opti symbol on white background	RRS 26 – 5 minute

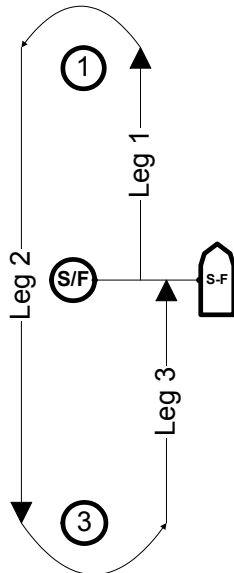
# Attachment B COURSE DIAGRAMS

COURSE "TW"



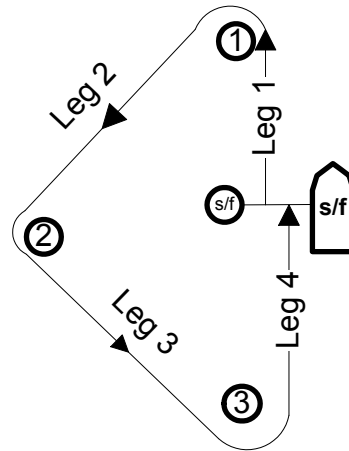
Start, 1,2,3,1,3,Finish All marks left to port.

COURSE 'W'



Start, 1,3, Finish All Marks left to port.

COURSE 'T'



Start, 1,2,3,Finish All Marks Left to port.