



*2020 Laser Masters Atlantic Coast Championship*

*Sailing Instructions*

*Amendments in Red 10/10/20 @1030*

**1. RULES**

1. The regatta will be governed by the Racing Rules of Sailing (RRS) and the rules of the International Laser Class Association (ILCA).
2. The organizing authority is Sail Newport and Laser Fleet 413 in conjunction with the international Laser Class Association (ILCA).
3. Unless a minimum of 12 laser radials entries have been received by October 9<sup>th</sup>, all entrants shall start and finish together.
4. Competitors may choose Standard, Radial or 4.7 rigs at their discretion, and change rigs throughout the regatta, provided that all rig changes are made on shore and all sails have the same number (Rig-Swapping Rule turned on). Providing that a minimum of 12 Standard and 12 Radial entries has been received by October 9<sup>th</sup>, the Radial fleet shall be given a separate start and shall be scored separately from the Standard Rig fleet (Rig-Swapping Rule turned off).
5. Rig Swapping between Radials and 4.7s shall always be in effect. This changes ILCA Class Rule 28(d) by permission of the International Laser Class Association of North America.

**2. NOTICES TO COMPETITORS**

1. Notices to competitors will be posted on the Official Notice Board located online at [Regatta Network Notices](#). COVID-19 restrictions will keep us from having an in person notice board.

**3. CHANGES TO THE SAILING INSTRUCTIONS**

1. Any change to the sailing instructions will be posted before 0900 on the day it will take effect, except that any change to the schedule of races will be posted by 2000 on the day before it will take effect.

**4. SIGNALS MADE ASHORE**

1. Signals made ashore will be displayed at the flagpole on the waterside of the Robin Wallace Youth Building at 60 Fort Adams Drive.

- When AP is displayed ashore, '1 minute' is replaced with "not less than 45 minutes" in the race signal AP.

**5. SCHEDULE OF RACES**

- Racing is scheduled as follows:

*Friday October 9*

All Day

Boats may arrive at Sail Newport

*Saturday October 10*

0930

Skippers Meeting (Deck of 60 Fort Adams)

1000

Harbor Start

1100

First Warning

After Racing

Socially Distanced drinks at 72 Fort Adams Drive (Deck)

*Sunday October 11*

0930

First Warning Signal

1500

No initial warning Signal after this time

After Racing

Awards + Drinks at 72 Fort Adams Drive (Deck)


- 8 races are scheduled for this regatta. The number of races held each day will be at the discretion of the race committee.
- No initial warning will take place after 1500 on Sunday October 11<sup>th</sup>.

**6. RACING AREA**

- The racing area will be between (A) Rose and Goat Island or (B) Potter Cove and Gould Island. Please see attachment 1 for reference.
- All racing will take place in area (A) unless posted on the Notice Board stating otherwise.

**7. CLASS FLAGS**

- Classes and flags will be the following:

Classes	Class Flag
Laser Full Rig and Radial	 Numeral Pennant #1

## 8. COURSES

1. The diagrams in Attachment 2 show the courses, including approximate angles.
2. No later than the warning signal, the race committee signal boat will display the course and the approximate length and bearing to the first mark.
3. The course descriptions below show the order of mark rounding for each course:

Course	Rounding Order
W2	Start-1-1a-2s-Finish
W3	Start-1-1a-Gate-Finish
W4	Start-1-1a-Gate-1-1a-2s-Finish
W5	Start-1-1a-Gate-1-1a-Gate-Finish
0	Start-1-2-3-1-3-Finish

## 9. MARKS

1. Original marks 1, 1a, 2p/s (gate) and 3 will be orange inflatable marks.
2. The starting pin will be a yellow inflatable mark or boat displaying an orange flag.
3. **The finish pin will be a smaller red buoy.**
4. Change marks will be yellow inflatable buoys.
5. If a leeward gate is not in place, round the remaining single mark to port.

## 10. THE START

1. Races will be started by using RRS 26.
2. A boat that does not start within 5 minutes after her starting signal will be scored Did Not Start (DNS) without a hearing. This changes RRS A4 and A5.

## 11. CHANGE OF THE NEXT LEG OF THE COURSE

1. To change the next leg of the course, the race committee will lay a new mark (or move the finish line) and remove the original mark as soon as practicable. When in a subsequent change a new mark is replaced, it will be replaced by an original mark.
2. In the case of a change of course, the offset mark shall be omitted.
3. A leg may be changed up to 005° in bearing or .05nm in length without a signal or change in mark color. This changes RRS 33.

## 12. THE FINISH

1. **For W2 and W4 courses, the finish line will be between a staff displaying a blue flag on the signal boat and the red buoy on the port side of the signal boat looking downwind.**
2. **For W3 and W5 courses, the finish line will be between a staff displaying a blue flag on the signal boat and the red buoy on the port side of the signal boat looking upwind.**
3. **For O course, the finish line will be between a staff displaying a blue flag on the signal boat and the red buoy on the starboard side of the signal boat looking upwind.**

## 13. TIME LIMITS AND TARGET TIMES

1. The time limit for a race for the first boat will be 2 hours.
2. The target time for each race will be 40 minutes.

3. Boats failing to finish within 30 minutes of the first boat to finish will be scored Did Not Finish (DNF) without a hearing. This changes RRS 35, A4, and A5.

#### **14. PENALTY SYSTEM**

1. The first sentence of rule 44.1 is altered so that “One-Turn Penalty” replaces “Two-Turns Penalty.

#### **15. PROTESTS AND REQUESTS FOR REDRESS**

1. Protests will be heard via Zoom.
2. Protest forms can be found in the race documents of the Regatta Network regatta page.
3. Protests must be emailed to [Matt.Duggan@sailnewport.org](mailto:Matt.Duggan@sailnewport.org) by 1800 on the day the incident occurred.

#### **16. SCORING**

1. The Low Point Scoring System, Appendix A2, will apply.
2. A minimum of one race must be completed to constitute a regatta.
3. There will be one (1) throw out when six (6) races have been completed. This changes rule A2.

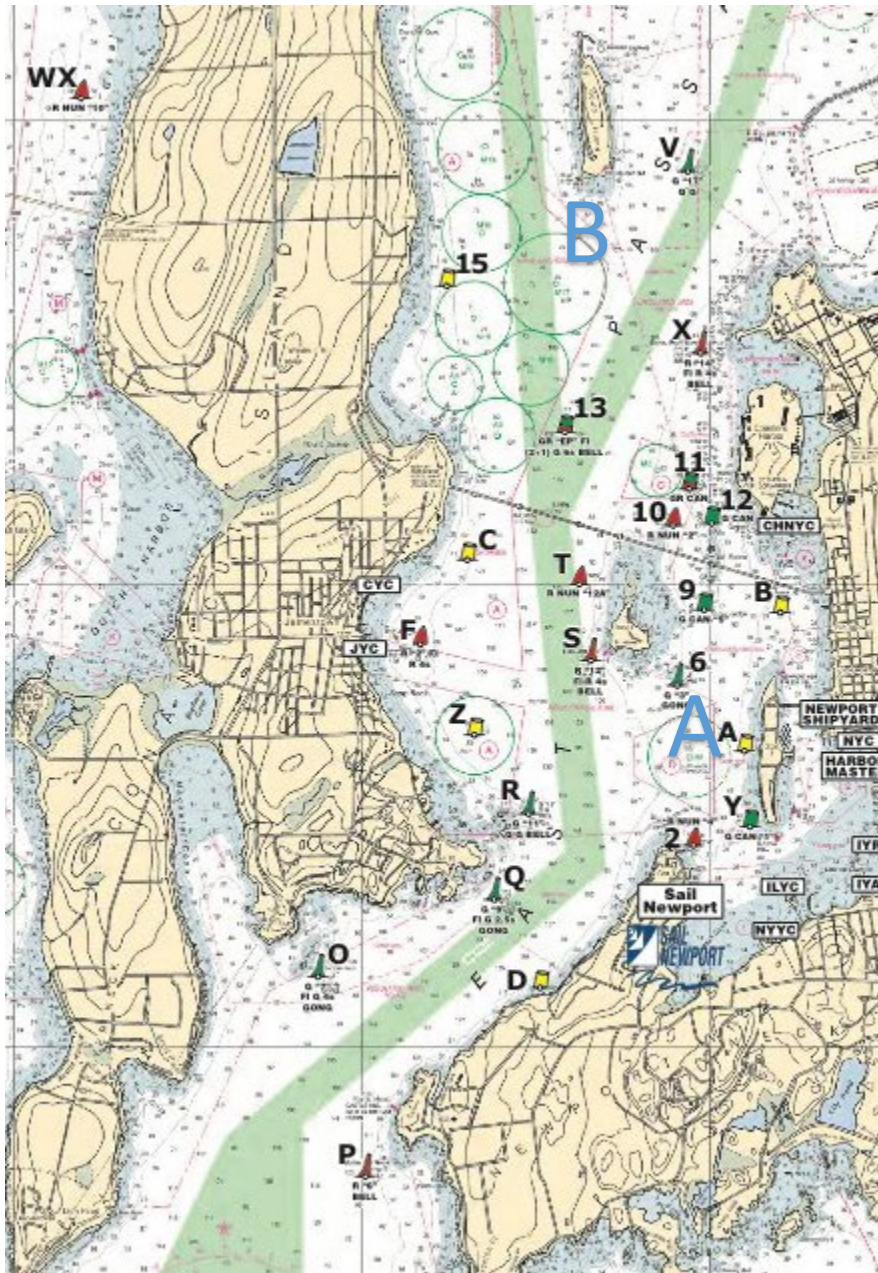
#### **17. SAFETY**

1. All competitors must wear lifejackets at all times except when making brief changes of clothing on-the-water.
2. A competitor that withdraws from a race or intends to not start a race shall inform the nearest mark boat or the signal boat as soon as possible.

#### **18. DISCLAIMER OF LIABILITY**

1. Competitors participate in the regatta entirely at their own risk. See RRS 4, decision to race. The organizing authority, Sail Newport, will not accept any liability for material damage or personal injury or death sustained in conjunction with, prior to, during or after the regatta.

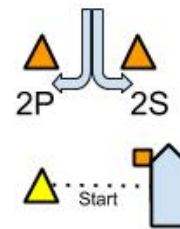
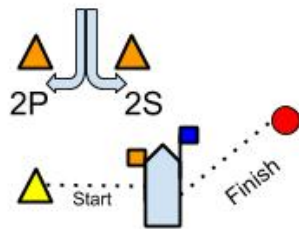
# Attachment 1- Racing Area



## Attachment 2- Courses

'W2' and 'W4' (Finish to leeward)

'W3' and 'W5' (Finish to Windward)



*'O' Course*

