

2020 CLUB SERIES

07 June 2020 **Race 1**

03 October 2020 **Race 2**

Organizing Authority: The Houston Yacht Club
Shoreacres, Texas

SAILING INSTRUCTIONS Race 2

1. RULES

1.1 The regatta will be governed by the rules as defined in *The Racing Rules of Sailing*.

1.2 Protests:

1.2.1 Due to COVID-19 restrictions nationally, and in Harris County, there will be no after racing protest filings permitted or hearings held for any rule violations or requests for redress. Competitors are encouraged to handle all on-the-water rules violation incidents in a Corinthian manner by taking on the water penalties under RRS 44.

1.2.2 Appendix V will apply.

1.2.3 The last two sentences of RRS 2 shall not apply. RRS 60.1 (b), 60.2, 60.3, 60.4, 61.1(b), 61.1(c), 61.2, 61.3, 61.4, 62, 63, 64, 65, 66, and Appendix M, shall all be deleted.

1.2.4 By sailing and participating in the regatta, all boats, their owners, competitors shall agree that they waive their rights to after race protests and hearings.

1.3 **Discretionary Penalty [DP]:** Competitors and support persons shall comply with any reasonable request from event officials. Failure to comply may be considered misconduct.

1.4 Reasonable actions by event officials to implement COVID-19 guidance, protocols or legislation, even if they later prove to have been unnecessary, are not improper actions or omissions.

2. NOTICES TO COMPETITORS

2.1 Notices to Competitors will be posted on the official "HYC Race Information" notice board located in the breezeway adjacent to the offices of The Houston Yacht Club.

3. CHANGES TO SAILING INSTRUCTIONS

3.1 Any change to these Sailing Instructions will be posted before 0800 on the day it will take effect, except that any change to the schedule of races will be posted by 2000 on the day before it will take effect.

4. SIGNALS MADE ASHORE

4.1 Signals made ashore shall be displayed from the signal staff on the lawn of The Houston Yacht Club.

4.2 When flag AP is displayed ashore, "1 minute" is replaced with "not less than 60 minutes" in the race signal AP. This changes RRS Race Signals.

4.3 Signal flags may be flown either alone or over one or more numeral pennants. Individual lines will be designated by following pennants:

4.3.1 When flag AP over "1" pennant is displayed, the signal applies to the Windward/Leeward Line.

4.3.2 When flag AP over "2" pennant is displayed, the signal applies to the Pursuit Line.

4.3.3 If no Numeral Pennant is displayed, the signal pertains to all lines. This changes RRS Race Signals.

5. SCHEDULE OF RACES

- 5.1 Races will be sailed according to the schedule in the Notice of Race. All times are GPS times.
- 5.2 Flag A displayed, with no sound, while boats are finishing means "No more racing today".

6. CLASS FLAGS

- 6.1 Ensign Ensign Class Flag
- J/22 J22 Class Flag
- Laser Yellow Flag
- Opti Opti Class Flag
- Spin Sport Boat Blue Flag

7. RACING AREA

- 7.1 All classes will sail around designated marks in the area bounded by Morgan’s Point on the north, the Bayport Ship Channel on the south, the Houston Ship Channel on the east and the La Porte/Shoreacres shoreline on the west. The racing area is shown in Attachment A.
- 7.2 Boats shall not enter any Ship Channel while racing. Ship Channels are designated as obstructions.

8. CHECK IN

- 8.1 Prior to the warning for the first race of the day, each boat shall check-in with, and be recognized by, the Race Committee (R/C) Signal Boat displaying the code Flag "L," by passing close astern, on starboard tack and hailing her sail number.

9. THE COURSES

- 9.1 The Windward/Leeward Line
No later than the warning signal, the Race Committee Signal boat will display a numeral pennant indicating the number of legs to be sailed. All marks shall be rounded leaving the mark to port. See Attachment C.
- 9.2 The Pursuit Line
 - 9.2.1 Attachment B shows the courses and the order in which the marks are rounded.
 - 9.2.2 No later than the warning/preparatory signal, the Race Committee Signal Boat will display a numeral pennant indicating the course to be sailed (See Attachment B).
 - 9.2.3 The Start/Finish Line shall be considered an *obstruction* to and by yachts sailing the course, but not in the act of *starting* or *finishing*.

10. MARKS

- 10.1 The Windward/Leeward Line
 - 10.1.1 The windward mark will be an orange tetrahedron. The windward mark for the dinghies will be a green circular ball.
 - 10.1.2 The leeward mark will be an orange tetrahedron.
- 10.2 The Pursuit Line
The Pursuit Line mark layout is shown in Attachment B.
 - Mark #1, is the “The Judges Stand” located at approximately: **29° 37.367’N, 94° 59.726’W**
 - Mark #2, is the “High Range” located at approximately: **29° 37.790’N, 94° 58.214’W**

- Mark #3, a large YELLOW tetrahedron located at approximately:
29° 39.833'N, 94° 58.919'W
- Mark #4, a large YELLOW tetrahedron located at approximately:
29° 38.839'N, 95° 00.114'W

11. THE START

11.1 The Windward/Leeward Line

11.1.1 Races will be started by using RRS 26.

11.1.2 The starting line will be between a staff displaying an orange flag on the starboard end of the line, and a mark or floating shape at the port end of the line. All starts will be off the port side of the signal boat.

11.1.3 First start will be all dinghies. Second start will be all of the keelboats racing on the windward/leeward line.

11.2 The Pursuit Line

11.2.1 The starting line will be between a staff displaying an orange flag on the starboard end of the line, and a mark or floating shape at the port end of the line. All starts will be off the port side of the signal boat.

11.2.2 The Pursuit Line start times are staggered, based on the boat PHRF handicap. Start times for all competitors are provided in Attachment D.

11.2.3 The Warning/Preparatory signal is the display of the orange line flag.

11.3 Any boat whose preparatory signal has not been made shall keep clear of the starting area and of any boat whose preparatory signal has been made.

11.4 A boat shall start no later than 10 minutes after her assigned starting time.

11.5 The Race Committee may elect to trail a line (not to exceed 30') attached to a floating object, behind the Signal boat or elect to attach a buoy to the boat's anchor marking the anchor and the anchor rode (of up to approximately 50'). The floating object and its line shall be considered to be part of the Signal boat and hitting the floating object or running over the line shall be treated as hitting the Signal boat.

12. RECALLS

12.1 Recalls will be signaled in accordance with RRS 29.

12.2 As a courtesy, the Race Committee will attempt to hail boats "On Course Side" (OCS) as soon as possible after the start. The Race Committee may use VHF radios or loud hailer.

12.3 The failure of electronic equipment, failure to hear a hail, order of hail, or delay in hailing will not be grounds for redress. This modifies RRS 62.1(a).

12.4 The Pursuit Line

12.4.1 Code flag X will be displayed for a short period of time and such length of time shall be at the discretion of the Race Committee, for the Pursuit Line. This changes RRS 29. The length of time that Code Flag X is displayed will not be grounds for redress. This changes RRS 62.1(a).

- 12.4.1 Pursuit Line start times are GPS time, which governs. All boats will be responsible for determining their exact start time. The Race Committee will monitor start times of each boat. OCS boats have the option of returning to the start line and restarting or shall take the penalty as shown in the table below. The penalty will be assessed at scoring. This changes RRS 29.1 and Appendix A.

0 to 10 sec early	penalty of 30 seconds
10 to 30 sec early	penalty of 1 minute
30 to 1 min early	penalty of 3 minutes
1 min to 2 min	penalty of 10 minutes
More than 2 min	DNS or DNC as appropriate

13. CHANGE OF THE POSITION OF THE NEXT MARK

13.1 The Windward/Leeward Line

The Race Committee will move marks as appropriate (described in Section 10.1) between races.

14. SHORTENED COURSE

14.1 The Windward/Leeward Line

Rule 32 is in effect. If the course is shortened, the Race Committee Signal Boat will be in the original starting position and will not relocate to the opposite side of the finish mark.

14.2 The Pursuit Line

The Race Committee will not shorten the course.

15. THE FINISH

15.1 The Windward/Leeward

The Finish Line will be between a staff displaying orange flag on a race committee boat on the port end and a mark or floating shape on the starboard end.

15.2 The Pursuit Line

The Finish Line will be between a staff displaying orange flag on a race committee boat on the port end and a mark or floating shape on the starboard end. The Race Committee will record the order of finish.

16. TIME LIMITS

16.1 Unless posted on the HYC Race Information Board, the Windward/Leeward time limit is **120 minutes** and the Pursuit Line time limit is **210 minutes**, and the Dinghy time limit is **60 minutes**.

16.2 Boats failing to finish within 30 minutes (the finishing window) after the first boat in its class sails the course and finishes will be scored Time Limit Expired (TLE) equal to the number of finishing boats plus 2. This changes RRS 35, A4, A5 and A11.

17. PENALTIES

17.1 Appendix V is in effect.

18. PROTESTS, SCORING INQUIRIES, AND REQUESTS FOR REDRESS

18.1 See SI 1.2.

19. SCORING

- 19.1 The Low-Point Scoring system of Appendix A shall apply.
- 19.2 One race shall be completed to constitute a series.
- 19.3 No scores will be excluded. This changes RRS A2.

20. SAFETY

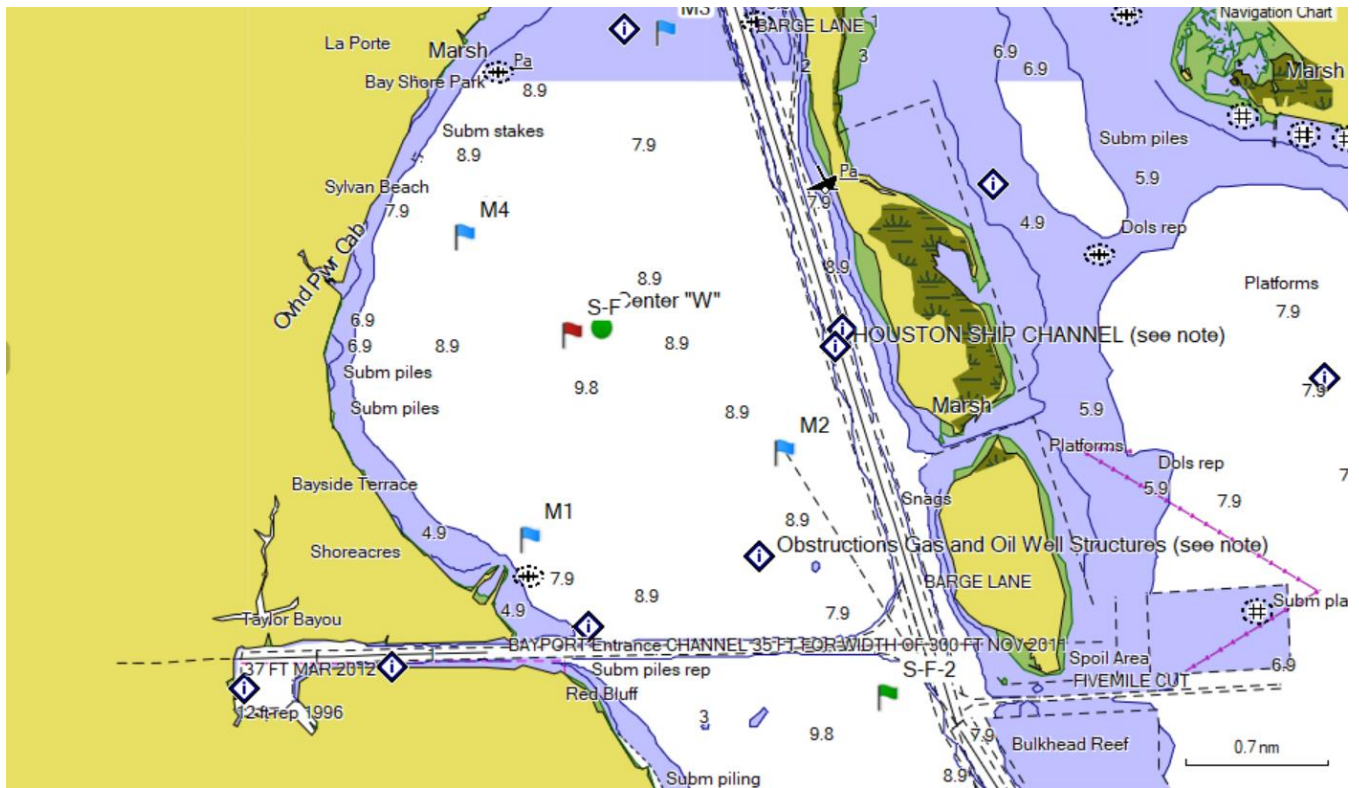
- 20.1 Any boat that has checked in, and then withdraws before finishing the race, shall notify the Race Committee on the water, or, if that is not possible, The Houston Yacht Club office by telephone: **281-471-1255**. Failure to comply with this requirement may result in disqualification from this regatta.
- 20.2 Boats shall not discharge trash into the water. The penalty for violating RRS 55 will be a 20% Scoring Penalty. This changes RRS 55.
- 20.3 **DISCLAIMER OF LIABILITY:** Competitors participate in this regatta entirely at their own risk. See RRS 4, Decision to Race.

21. RADIO COMMUNICATIONS

- 21.1 Except in an emergency that threatens the safety or life and/or property, a boat that is racing shall not make voice or data transmissions and shall not receive voice or data communication that is not available to all boats.
- 21.2 The Race Committee will attempt to monitor **VHF Channel 68** and may use VHF radio to hail premature starters and the abandonment of races.
- 21.3 The Race Committee may attempt to report visual signals displayed, and other pertinent information over VHF for the races. This information is provided as a courtesy to the competitors and does not in any way alter their responsibility to observe the RC's visual signals which govern the conduct of the race. Errors or omission involving such courtesy broadcasts shall not be grounds for redress.

ATTACHMENT A

RACING AREA



ATTACHMENT B

PURSUIT LINE COURSES

Course #1

Start to Mark 1 Leave on Port
Mark 1 to Mark 2 Leave on Port
Mark 2 to Mark 3 Leave on Port
Mark 3 to Mark 4 Leave on Port
Mark 4 to Mark 1 Leave on Port
Mark 1 to Finish Total of 8.4 miles

Course #2

Start to Mark 2 Leave on Port
Mark 2 to Mark 3 Leave on Port
Mark 3 to Mark 4 Leave on Port
Mark 4 to Mark 1 Leave on Port
Mark 1 to Mark 2 Leave on Port
Mark 2 to Finish Total of 8.4 miles

Course #3

Start to Mark 3 Leave on Port
Mark 3 to Mark 4 Leave on Port
Mark 4 to Mark 1 Leave on Port
Mark 1 to Mark 2 Leave on Port
Mark 2 to Mark 3 Leave on Port
Mark 3 to Finish Total of 8.4 miles

Course #4

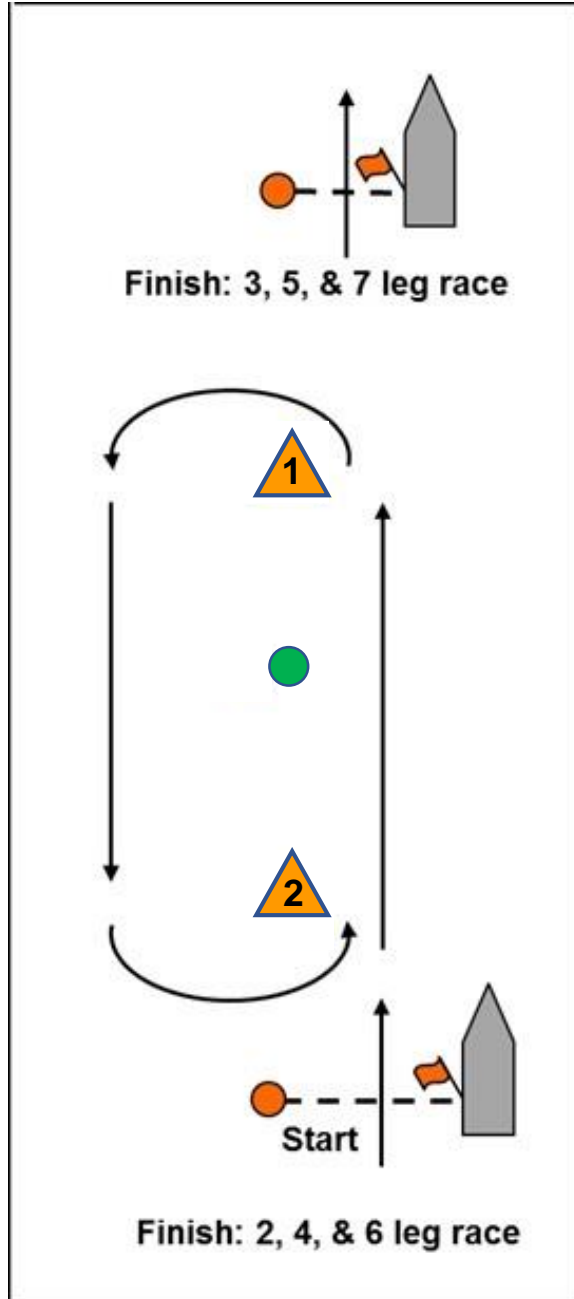
Start to Mark 4 Leave on Port
Mark 4 to Mark 1 Leave on Port
Mark 1 to Mark 2 Leave on Port
Mark 2 to Mark 3 Leave on Port
Mark 3 to Mark 4 Leave on Port
Mark 4 to Finish Total of 8.4 miles

Course #5

Start to Mark 1 Leave on Port
Mark 1 to Mark 3 Leave on Port
Mark 3 to Mark 4 Leave on Port
Mark 4 to Mark 2 Leave on Port
Mark 2 to Mark 3 Leave on Port
Mark 3 to Mark 1 Leave on Port
Mark 1 to Finish Total of 12.5 miles

ATTACHMENT C

WINDWARD/LEEWARD LINE



ATTACHMENT D

PURSUIT LINE START TIMES

PHRF	Course #1 8.40 NM	Course #2 8.40 NM	Course #3 8.40 NM	Course #4 8.40 NM	Course #5 12.50 NM
180	30:00	30:00	30:00	30:00	30:00
179	30:08	30:08	30:08	30:08	30:12
178	30:17	30:17	30:17	30:17	30:25
177	30:25	30:25	30:25	30:25	30:38
176	30:34	30:34	30:34	30:34	30:50
175	30:42	30:42	30:42	30:42	31:03
174	30:50	30:50	30:50	30:50	31:15
173	30:59	30:59	30:59	30:59	31:27
172	31:07	31:07	31:07	31:07	31:40
171	31:16	31:16	31:16	31:16	31:53
170	31:24	31:24	31:24	31:24	32:05
169	31:32	31:32	31:32	31:32	32:17
168	31:41	31:41	31:41	31:41	32:30
167	31:49	31:49	31:49	31:49	32:43
166	31:58	31:58	31:58	31:58	32:55
165	32:06	32:06	32:06	32:06	33:08
164	32:14	32:14	32:14	32:14	33:20
163	32:23	32:23	32:23	32:23	33:32
162	32:31	32:31	32:31	32:31	33:45
161	32:40	32:40	32:40	32:40	33:58
160	32:48	32:48	32:48	32:48	34:10
159	32:56	32:56	32:56	32:56	34:23
158	33:05	33:05	33:05	33:05	34:35
157	33:13	33:13	33:13	33:13	34:47
156	33:22	33:22	33:22	33:22	35:00
155	33:30	33:30	33:30	33:30	35:13
154	33:38	33:38	33:38	33:38	35:25
153	33:47	33:47	33:47	33:47	35:38
152	33:55	33:55	33:55	33:55	35:50
151	34:04	34:04	34:04	34:04	36:02
150	34:12	34:12	34:12	34:12	36:15
149	34:20	34:20	34:20	34:20	36:28
148	34:29	34:29	34:29	34:29	36:40
147	34:37	34:37	34:37	34:37	36:53
146	34:46	34:46	34:46	34:46	37:05
145	34:54	34:54	34:54	34:54	37:17
144	35:02	35:02	35:02	35:02	37:30
143	35:11	35:11	35:11	35:11	37:43

142	35:19	35:19	35:19	35:19	37:55
141	35:28	35:28	35:28	35:28	38:08
140	35:36	35:36	35:36	35:36	38:20
139	35:44	35:44	35:44	35:44	38:32
138	35:53	35:53	35:53	35:53	38:45
137	36:01	36:01	36:01	36:01	38:58
136	36:10	36:10	36:10	36:10	39:10
135	36:18	36:18	36:18	36:18	39:23
134	36:26	36:26	36:26	36:26	39:35
133	36:35	36:35	36:35	36:35	39:47
132	36:43	36:43	36:43	36:43	40:00
131	36:52	36:52	36:52	36:52	40:13
130	37:00	37:00	37:00	37:00	40:25
129	37:08	37:08	37:08	37:08	40:38
128	37:17	37:17	37:17	37:17	40:50
127	37:25	37:25	37:25	37:25	41:02
126	37:34	37:34	37:34	37:34	41:15
125	37:42	37:42	37:42	37:42	41:28
124	37:50	37:50	37:50	37:50	41:40
123	37:59	37:59	37:59	37:59	41:53
122	38:07	38:07	38:07	38:07	42:05
121	38:16	38:16	38:16	38:16	42:17
120	38:24	38:24	38:24	38:24	42:30
119	38:32	38:32	38:32	38:32	42:43
118	38:41	38:41	38:41	38:41	42:55
117	38:49	38:49	38:49	38:49	43:08
116	38:58	38:58	38:58	38:58	43:20
115	39:06	39:06	39:06	39:06	43:32
114	39:14	39:14	39:14	39:14	43:45
113	39:23	39:23	39:23	39:23	43:58
112	39:31	39:31	39:31	39:31	44:10
111	39:40	39:40	39:40	39:40	44:23
110	39:48	39:48	39:48	39:48	44:35
109	39:56	39:56	39:56	39:56	44:47
108	40:05	40:05	40:05	40:05	45:00
107	40:13	40:13	40:13	40:13	45:13
106	40:22	40:22	40:22	40:22	45:25
105	40:30	40:30	40:30	40:30	45:38
104	40:38	40:38	40:38	40:38	45:50
103	40:47	40:47	40:47	40:47	46:03
102	40:55	40:55	40:55	40:55	46:15
101	41:04	41:04	41:04	41:04	46:27
100	41:12	41:12	41:12	41:12	46:40
99	41:20	41:20	41:20	41:20	46:53
98	41:29	41:29	41:29	41:29	47:05
97	41:37	41:37	41:37	41:37	47:18
96	41:46	41:46	41:46	41:46	47:30

95	41:54	41:54	41:54	41:54	47:42
94	42:02	42:02	42:02	42:02	47:55
93	42:11	42:11	42:11	42:11	48:08
92	42:19	42:19	42:19	42:19	48:20
91	42:28	42:28	42:28	42:28	48:33
90	42:36	42:36	42:36	42:36	48:45
89	42:44	42:44	42:44	42:44	48:57
88	42:53	42:53	42:53	42:53	49:10
87	43:01	43:01	43:01	43:01	49:23
86	43:10	43:10	43:10	43:10	49:35
85	43:18	43:18	43:18	43:18	49:48
84	43:26	43:26	43:26	43:26	50:00
83	43:35	43:35	43:35	43:35	50:12
82	43:43	43:43	43:43	43:43	50:25
81	43:52	43:52	43:52	43:52	50:38
80	44:00	44:00	44:00	44:00	50:50
79	44:08	44:08	44:08	44:08	51:03
78	44:17	44:17	44:17	44:17	51:15
77	44:25	44:25	44:25	44:25	51:27
76	44:34	44:34	44:34	44:34	51:40
75	44:42	44:42	44:42	44:42	51:53
74	44:50	44:50	44:50	44:50	52:05
73	44:59	44:59	44:59	44:59	52:18
72	45:07	45:07	45:07	45:07	52:30
71	45:16	45:16	45:16	45:16	52:42
70	45:24	45:24	45:24	45:24	52:55
69	45:32	45:32	45:32	45:32	53:08
68	45:41	45:41	45:41	45:41	53:20
67	45:49	45:49	45:49	45:49	53:33
66	45:58	45:58	45:58	45:58	53:45
65	46:06	46:06	46:06	46:06	53:57
64	46:14	46:14	46:14	46:14	54:10
63	46:23	46:23	46:23	46:23	54:23
62	46:31	46:31	46:31	46:31	54:35
61	46:40	46:40	46:40	46:40	54:48
60	46:48	46:48	46:48	46:48	55:00
59	46:56	46:56	46:56	46:56	55:12
58	47:05	47:05	47:05	47:05	55:25
57	47:13	47:13	47:13	47:13	55:38
56	47:22	47:22	47:22	47:22	55:50
55	47:30	47:30	47:30	47:30	56:03
54	47:38	47:38	47:38	47:38	56:15
53	47:47	47:47	47:47	47:47	56:27
52	47:55	47:55	47:55	47:55	56:40
51	48:04	48:04	48:04	48:04	56:53
50	48:12	48:12	48:12	48:12	57:05