



Sailing Instructions

A-Class Worlds Training Regatta #1 *October 19 - 21, 2020*

Hosted by: Davis Island Yacht Club (DIYC), 1315 Severn Avenue, Tampa, FL 33606

1. RULES

The regatta will be governed by the rules as defined in *The Racing Rules of Sailing*.

2. NOTICES TO COMPETITORS

Notices to competitors will be posted on the official notice board located on the west exterior wall on the lower level of the Clubhouse.

3. CHANGES TO SAILING INSTRUCTIONS

Any change to the sailing instructions will be posted before 0900 on the day it will take effect, except that any change to the schedule of races will be posted by 2000 on the day before it will take effect.

4. SIGNALS MADE ASHORE

- 4.1 Signals made ashore will be displayed from the flagpole at the west end of the property.
- 4.2 When flag AP is displayed ashore, '1 minute' is replaced by 'not less than 45 minutes' in the race signal.

5. RACING AREA

The racing area will be on Hillsborough Bay approximately 1-2 miles south of the Clubhouse, as shown in Attachment A.

6. SCHEDULE OF RACES

Monday	0930	Competitors meeting
Monday, Tuesday	1100	First warning signal
Wednesday	1000	First warning signal

No initial warning signal after 1500 on Wednesday.
Nine races are scheduled.

7. CLASS FLAG

The class flag will be the A-Class flag.

8. THE COURSES

- 8.1 The diagrams in Attachment B show the courses, including the approximate angles between legs and the order in which marks are to be passed.
- 8.2 If only one leeward mark is present it shall be rounded to port.
- 8.3 The course identifier, approximate magnetic bearing and distance in nautical miles to the first mark will be displayed from the race committee signal vessel prior to the warning signal for each race. An example is shown below:

5	Five legs, finishing to weather
270	Approx magnetic bearing to weather mark
1.2	1.2 nm to weather mark

9. MARKS

- 9.1 Windward and leeward marks will be yellow inflatables. The offset mark will be small orange ball. The start/finish marks will be a green inflatable and an RC vessel.
- 9.2 New marks, as provided in SI 12, will be orange inflatables.

10. THE START

The starting line will be between a staff displaying an orange flag on the race committee signal vessel at the starboard end and the course side of a port end starting mark.

11. RECALLS

- 11.1 The race committee will hail the sail numbers of OCS boats after the starting signal.
- 11.2 Lack of hail, the failure of any boat to hear the hail, the timeliness or the order of such hails shall not be considered an improper act or omission of the race committee.

12. CHANGE OF THE NEXT LEG OF THE COURSE

To change the next leg, the race committee will lay a new mark (or move the finishing line) and remove the old mark as soon as practicable. When in a subsequent change a new mark is replaced, it will be replaced by an original mark.

13. THE FINISH

The finishing line will be between a staff displaying an orange flag on a race committee vessel and the course side of the finishing mark.

14. PENALTY SYSTEM

Rule 44.1 is changed so that the Two-Turns Penalty is replaced by the One-Turn Penalty.

15. TIME LIMITS

- 15.1 The time limit for the first boat to sail the course and finish is 2 hours.
- 15.2 Boats still racing more than 30 minutes after the first boat sails the course and finishes will be scored DNF. This changes rules 35, A4, and A5.

16. PROTESTS AND REQUESTS FOR REDRESS

- 16.1 Protest forms are available at the Regatta Room. Protests shall be delivered there within 60 minutes after the race committee finish vessel docks. The docking time will be posted on the Official Notice Board.
- 16.2 Notices will be posted within 15 minutes after the protest time limit to inform competitors of hearings in which they are parties or named as witnesses. Protests will be heard in the approximate order of receipt in the Regatta Room.

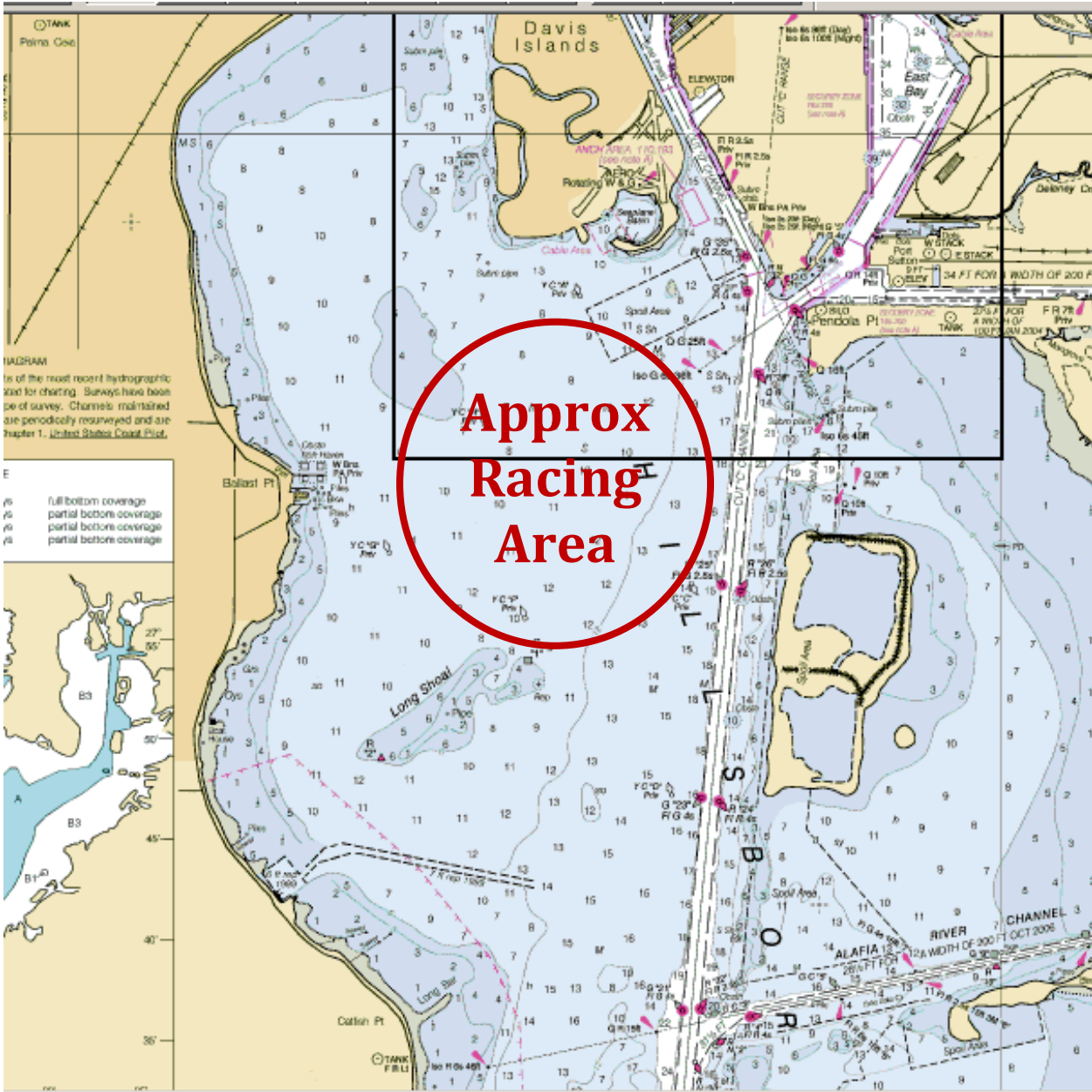
17. SCORING

- 17.1 When fewer than four races have been completed, a boat's regatta score will be the total of her race scores.
- 17.2 One completed race is required to constitute a regatta.

18. SAFETY

- 18.1 Prior to the warning signal for the first race of each day in which it intends to compete, each boat is requested to sail by the race committee signal vessel and hail its sail number.
- 18.2 A boat retiring from a race or leaving the racing area early shall promptly notify the race committee either by hail, or by telephone to the Clubhouse at (813) 251-1158.

Attachment A – Approximate Racing Area



Attachment B – Course Diagrams

Course 4	Course 5
<p>Start, 1 (port), 1a (port), between 2S and 2P, 1(port), 1a (port), finish</p>	<p>Start, 1 (port), 1a (port), between 2S and 2P, 1(port), 1a (port), between 2S and 2P, finish</p>

Other possible courses:

Course 3: Start - 1 - 1a - Gate – Finish (Upwind)

Course 6: Start - 1 - 1a - Gate - 1 - 1a - Gate- 1 - 1a – Finish (Downwind)

Course 7: Start – 1 – 1a – Gate – 1 – 1a – Gate- 1 – 1a – Gate – Finish (Upwind)