



OPTI GREEN
Sailing Instructions
V01.27.2022

BUCCANEER BLAST REGATTA 2022
February 5-6, 2022

Rowell's Waterfront Park, Key Largo, FL

ORGANIZING AUTHORITY (OA)

Mark Sorensen Youth Sailing Program

www.msyp.org

The notation "[DP]" in a rule in these Sailing Instructions means that the penalty for a breach of that rule may, at the discretion of the Protest Committee, be less than disqualification. The notation "[NP]" in a rule in these Sailing Instructions means that a boat may not protest another boat for breaking that rule. This changes RRS 60.1(a).

1. RULES

- 1.1. The regatta will be governed by the *rules* as defined in *The Racing Rules of Sailing 2021-2024* (RRS) and the prescriptions, except US Sailing Prescription to RRS 63.2 which is deleted, the Notice of Race and these Sailing Instructions.
- 1.2. **[DP]** Participants shall abide by all local, state, and federal health and safety guidelines in effect during the days of the event.
- 1.3. In case of a discrepancy between these Sailing Instructions and the NOR, these Sailing Instructions shall govern.

2. NOTICES TO COMPETITORS

- 2.1. Notices to the competitors will be posted on the Official Notice Board located electronically on Regatta Network: https://www.regattanetwork.com/event/23523#_newsroom
- 2.2. Notices of hearings will be posted to the hearing schedule section of the Official Notice Board in the same location.

3. CHANGE IN SAILING INSTRUCTIONS (SIs)

Changes in the SIs will be posted on the Official Notice Board before 0900 on Saturday and before 0730 on Sunday except that any change in the schedule of races will be posted by 2000 on the day before the schedule change will take effect.

4. SIGNALS MADE ASHORE

- 4.1. Signals made ashore will be displayed on the Official Notice Board located electronically on Regatta Network: https://www.regattanetwork.com/event/23523#_newsroom
- 4.2. If a postponement is signaled ashore (Code Flag AP and two sounds), the warning signal will be made not less than 30 minutes after Code Flag AP is lowered with one sound. This changes RRS Signals.

5. SCHEDULE

5.1. Saturday, February 5

- 0800 – 0900: Onsite check-in available at the park
- 0915: Coaches, Meeting, beach area facing basin
- 0930: Competitors' Meeting, beach area facing basin
- 1100: Scheduled Harbor Start. No boat shall leave the beach area prior to signal from Beach Master and without being cleared by safety personnel.
- 1130: Scheduled warning signal for first race of the day
- 1630: No first warning signal will be made after this time.

5.2. Sunday, February 6

- 0900: Scheduled Harbor Start. No boat shall leave the beach area prior to signal from Beach Master and without being cleared by safety personnel.
- 0930: Intended warning signal for first race of the day.
- 1345: No first warning signal will be made after this time
- Lunch on land following races
- Award presentations shortly after the races following availability of scores.

6. RACING AREA

Race Area will be on the Blackwater Sound (see Addendum A – Intended Racing Area).

7. NUMBER OF RACES:

- 7.1. Contingent on conditions, it is the intention of the organizing authority and race committee to run as many races as possible but no more than ten.
- 7.2. Flag A displayed with no sound, while boats are finishing, means “No more racing today”.
- 7.3. One (1) scored race will constitute a series.

8. COURSES

Opti Green course will be as shown and described in Addendum B – Opti Green Course.

9. DESCRIPTIONS of MARKS, START LINE, FINISH LINE for Opti Green

Marks will be as follows;

- 9.1. Start Mark Orange Ball
- 9.2. Mark 1 Yellow Cylinder
- 9.3. Mark 2 Yellow Cylinder
- 9.4. Mark 3 Yellow Cylinder
- 9.5. Finish Mark Orange Ball

10. THE START

- 10.1. [DP] During the starting sequence, boats whose warning signal has not been made shall stay clear of the starting area.
- 10.2. Starts will be signaled in accordance with RRS 26.
- 10.3. The class flag will be a green Opti flag.
- 10.4. Multiple horns will be used to alert boats that a race or sequence of races will begin soon.
- 10.5. The start line will be between a staff flying an orange flag on the RC signal vessel at the starboard end and a buoy at the port end.

- 10.6. A boat starting more than four minutes after her starting signal will be scored DNS (Did Not Start) without a hearing. This changes A4 and A5.
- 10.7. The race committee may broadcast starting penalties on the course VHF after all boats have started.

11. CHANGE OF THE NEXT LEG OF THE COURSE

There will be no change of course made or signaled.

12. THE FINISH

The finish line will be between a staff flying a blue flag on the RC signal vessel at the starboard end and a buoy at the port end.

13. [DP]SAFETY

- 13.1. Prior to leaving shore, each competitor shall check out with safety personnel located at the launch ramps. It is the responsibility of the sailor to visibly confirm their sail number and name when checking out with the safety personnel. Sailors must check in immediately upon returning to shore.
- 13.2. A boat retiring from a race or leaving the course before racing for the day is completed shall notify the race committee before leaving the course or, when that is impossible, shore side staff immediately after arrival ashore. Boats failing to do so may be protested by the race committee, which may result in disqualification of a boat from the day's racing.
- 13.3. Substitution of damaged or lost equipment will not be allowed without written approval of the race committee. The race committee should be informed of any equipment changes by completing the equipment change form at https://docs.google.com/forms/d/e/1FAIpQLSegT6twp5IK9ImzueVni4J8v_yk6bLlrsI8-g_5i6U6ULgF0A/viewform.

14. RACE TIME LIMITS

- 14.1. If no boat, which started correctly, passes Mark One within 15 minutes of starting, the race will be abandoned.
- 14.2. If no boat, which started correctly, sails the course and finishes within 60 minutes of the start, the race will be abandoned.
- 14.3. Boats still racing ten (10) minutes after the first boat finishes, and not thereafter retiring, being penalized or given redress, will be scored TLE (Time Limit Expired) by the race committee without a hearing and will be scored points equal to the number of boats that did finish within the race time limit and complied with RRS 28 plus two points, but will not be scored more than the score for DNF. This changes RRS 35, A4, A5 and A10.

15. [DP]RACE AREA RESTRICTED ZONE

Upon finishing, boats shall immediately sail clear of the finishing area, stay clear of boats that have not finished and remain a minimum of 50 feet from the finishing line and its extensions and any boat still racing.

16. [DP]COACH, SUPPORT PERSONS and other BOATS

- 16.1. Coaches must display their ID flag provided by the OA at all times while in the race area and once a warning flag has been displayed remain at least 50 yards from the race course and any racing sailor until after the start. After the start, coaching is permitted and encouraged for those sailors in the lower half of the fleet, changing rule 41.
- 16.2. Support Persons must display their ID flag provided by the OA and once a warning flag has been displayed remain at least 50 yards from the race course and any racing sailor.
- 16.3. Any boat not displaying an ID flag must remain at least 200 yards from the race course and any racing sailor.
- 16.4. No coach or support boats are allowed at either end of the starting line during a sequence.
- 16.5. Support persons and coaches must assist if requested by the Race Committee if at all possible.

16.6. All coach and support boats shall be equipped with a functioning engine safety cut off switch which shall remain attached to the support person at all times while the engine is running.

17. RADIO COMMUNICATION

- 17.1. No competitors shall carry onboard any communication devices including, but not limited to, VHF radios and cell phones.
- 17.2. Coach and support boats shall carry and make use of functional VHF radios and cell phones for communications with the RC and OA.
- 17.3. VHF radio channel for Opti Green area is VHF CH 73.
- 17.4. VHF radio channel for emergencies is 23A.

18. REPORTS OF RACE COMMITTEE

The RC will report their actions related to boats scored DNC, OCS, ZFP, BFD, DNE, DNF, NSC and TLE. This report will be posted on Regatta Network Official Notice Board no later than 15 minutes after the RC signal vessel's dock time.

19. SCORING INQUIRIES, PROTESTS/REQUEST FOR REDRESS:

- 19.1. There will be no protests in Opti Green.
- 19.2. Scoring Inquiry and Redress forms will be available on the Regatta Network event site at https://www.regattanetwork.com/event/23523#_newsroom
- 19.3. Any competitor desiring clarification regarding scores as stated on "Actions by the Race Committee" shall submit a Scoring Inquiry Form within 30 minutes of the RC signal vessel's dock time.
- 19.4. Any competitor desiring clarification regarding scores OTHER THAN as stated on "Actions by the Race Committee" shall submit a Scoring Inquiry Form as soon as practicable.
- 19.5. Time Limit is thirty (30) minutes from the time the RC signal vessel has docked and will be posted on the Regatta Network Official Notice Board.
- 19.6. Requests for redress regarding incidents on the race course shall be delivered to the Jury Secretary located at the Judges tent or submitted via email to ussailing.raceofficer@gmail.com.

20. SCORING

- 20.1. The low point scoring system as described in RRS A4 will apply.
- 20.2. Each boat's series score shall, subject to rule 90.3(b), be the total of her races scores excluding her worst discardable score when six (6) or more scored races have been completed. This changes RRS A2.1.

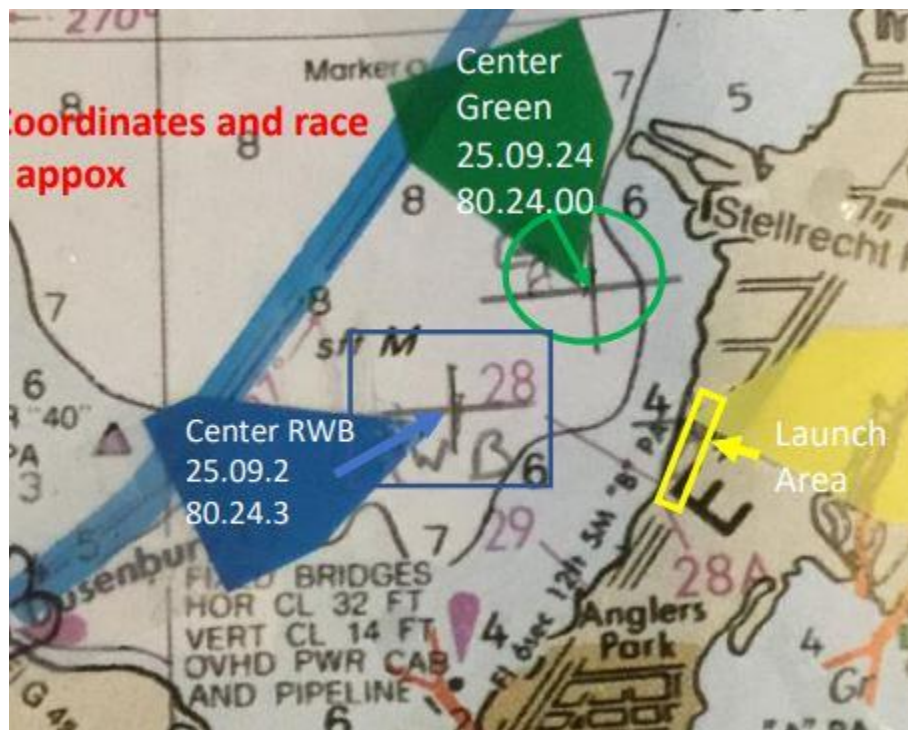
21. [DP]TRASH DISPOSAL

Competitors and support persons shall not intentionally put trash in the water and shall dispose of all refuse in appropriate containers ashore.

22. PRIZES

Awards will be presented to first through tenth place.

Addendum A – Intended Racing Area



Addendum B – Opti Green Course

