



2021 Clearwater 420 Open  
 Clearwater Community Sailing Center  
 February 27-28

# Sailing Instructions



## 1. RULES

- 1.1 The regatta will be governed by the rules as defined in *The Racing Rules of Sailing*
- 1.2 If there is a conflict between languages, the English text will take precedence.

## 2. NOTICES TO COMPETITORS

- 2.1 Notices to competitors will be posted on the official notice board located in between the shop and the bathrooms.

## 3. CHANGES TO SAILING INSTRUCTIONS

- 3.1 Any change to the sailing instructions will be posted before 0900 on the day it will take effect, except to the extent that any change to the schedule of races will be posted by 1800 on the day before it will take effect.

## 4. SCHEDULE OF RACES

Date	Day	Time	Event
February 27	Saturday	1000	Harbor Start
		1045	First possible warning
February 28	Sunday	930	Harbor Start
		1015	First possible warning
		1430	Last possible warning

## 5. SIGNALS MADE ASHORE

- 5.1 Signals made ashore will be made on the flag pole in the center of the yard.

## 6. The Finish

- 6.1 The finishing line will be between a committee boat flying an Orange Flag and the finishing mark.

## 7. Protests

- 7.1 Protest need to be reported to the signal boat as soon as possible after racing.
- 7.2 The protest time limit is 45 minutes after the race committee signal boat docks. The protest time limit (filing deadline) will be posted on the official notice board as soon as practical.
- 7.3 Protests hearings will be held upstairs at the sailing center.

## 8. Scoring and excluded races

- 8.1 When fewer than 5 races have been scored, a boat's series score will be the total of her race scores.
- 8.2 When 5 races or more have been scored a boat's series score will be the total of her race scores excluding her worst score.

**9. Minimum number of races; time limits**

9.1. A minimum of 1 race shall be completed to constitute a regatta.

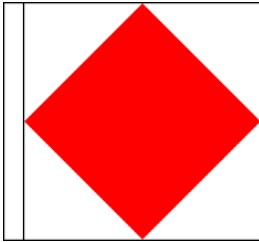
9.2 The time limit for the first boat to sail the course and finish is 40 minutes. Boats finishing 15 minutes after the leader of the division will be scored TLE or finished in place

**10. The Start**

10.1 Starting Sequence will be 5 minutes as described in RRS rule 26

10.2 The class flag for the club 420 division will be code flag "f".

Club 420: code flag F



**11. Racing area**

11.1 The racing area will be in the Gulf of Mexico South west of Clearwater Pass about ¾ of a mile offshore.

11.2 In the event of rough weather a second racing circle ran by coaches will be set up in Clearwater Harbor. Sailors racing on this circle will be scored separately and will not eligible for awards described in the NOR.

**12. Courses**

12.1 Courses are described in Appendix A.

12.2 Mark 1 and Gate marks will be a green tetrahedron, Mark 2 will be a red cylinder, Mark 3 will be medium orange cylinders, the starting pin will be a skinny yellow cylinder, the finish pin will be a red sphere.

12.3 If a mark is shown as gate, the gate may be replaced by single marks. If a gate is replaced by a single mark it is to be left to port.

**13. Safety**

13.1 Support boats shall monitor VHF Channel 68

13.2 All support boats shall wear a kill cord at all times while operating their vessel. Failure to do so may result in expulsion from the regatta.

13.3 A condition of entry and participation in this regatta is the wearing of a U.S. Coast Guard approved personal flotation device. All PFDs shall be properly secured at all times while on the water, except for brief periods while removing or adding clothing. Failure to wear a proper PFD will result in a penalty up to and including disqualification at the discretion of the protest committee.

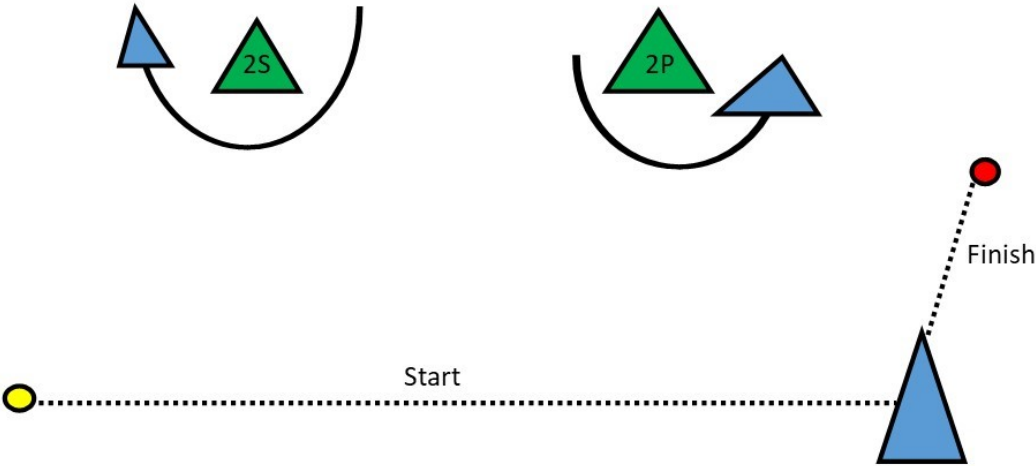
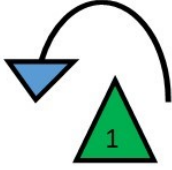
13.4 Competitors shall have a whistle attached to their PFD at all times while on the water.

13.5 Each boat shall have a bowline with a secure loop at the end.

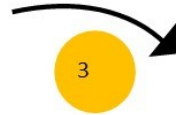
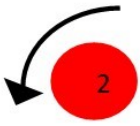
**14. Disclaimer of Liability**

14.1 Competitors participate in the regatta entirely at their own risk. See RRS 4 Decision To race. The Organizing Authority will not accept any liability for material damage or personal injury or death sustained in conjunction with or prior to, during, or after the regatta.

Appendix A



Course	Rounding Order
W2	Start- 1 -2s/p -Finish
W4	Start- 1 - 2s/p - 1 - 2s/p - Finish



Course	Rounding order
WR 2	Start - 1-2-3-4 s/p- Finish
WR 4	Start 1-2-3-4- s/p -1-2-3-4 s/p- Finish

