



Bittersweet Chocolate Regatta

Double-Handed J/105

January 10, 2021

SAILING INSTRUCTIONS

(Note: per the RRS 2021-24 the SAILING INSTRUCTIONS (SIs) should not repeat what's in the NOR.
Please refer to the NOR and SIs for information on this event.)

1 NOTICE TO COMPETITORS:

- 1.1 The Online Official Notice Board is located at: <https://www.regattanetwork.com/event/21659>
- 1.2 Race Committee will use VHF 72 for all communications on the water including changes to the SIs and courses to be raced.

2 CHANGES TO SAILING INSTRUCTIONS:

Any change to the sailing instructions prior to the day of racing will be posted on the Online Official Notice Board and sent via text before 8:00 hrs the day of racing.

3 SIGNALS MADE ASHORE:

All signals will be made from the shore breakwater adjacent to Golden Gate YC.

4 FLAGS:

Course flags will not be used. VHF 72 will announce courses before the 1st warning signal.

5 RESTRICTED AREAS:

For safety reasons boats shall not cross the following lines bounded by the points below and the closest points ashore:

- Anita Rock and Buoy "AR" (if in position NW of Anita Rock).
- The "H" Beam (located approximately 200 yards W of StFYC).
- The Bell Buoy off the W end of Alcatraz Island.
- The buoy S of Point Blunt on Angel Island.
- The South tower of the Golden Gate Bridge.
- Buoy R "2CR" FI R 4s marking Castro Rocks and the Richmond shore.

6 STARTING:

The starting line will be between a staff displaying an orange flag on the breakwater in the vicinity of Golden Gate YC and "X" buoy in front of GGYC.

7 FINISH

- 7.1 The finish line will be between the flagpole at GGYC and the X Buoy.
- 7.2 Boats shall note their finish time and the name of the boat ahead and behind them. Text or call this information to the PRO.
- 7.3 Boats retiring before finishing shall notify the PRO via text or cell and announce via VHF 72.

8 TIME LIMIT:

The time limit for the race is 16:30 hrs. Boats finishing after the time limit will be scored DNF. This changes RRS 35 and A5.

9 PROTESTS:

Protests shall be texted or emailed to the PRO by midnight the day of the race. Protest hearings will be scheduled via ZOOM asap. A list of protests, hearing dates, times and decisions will be posted on the Online Official Notice Board.

10 INTERFERENCE WITH OTHER VESSELS:

Boats shall not impede the passage of a vessel that can safely navigate only within a narrow channel, fairway or large-vessel traffic lane.

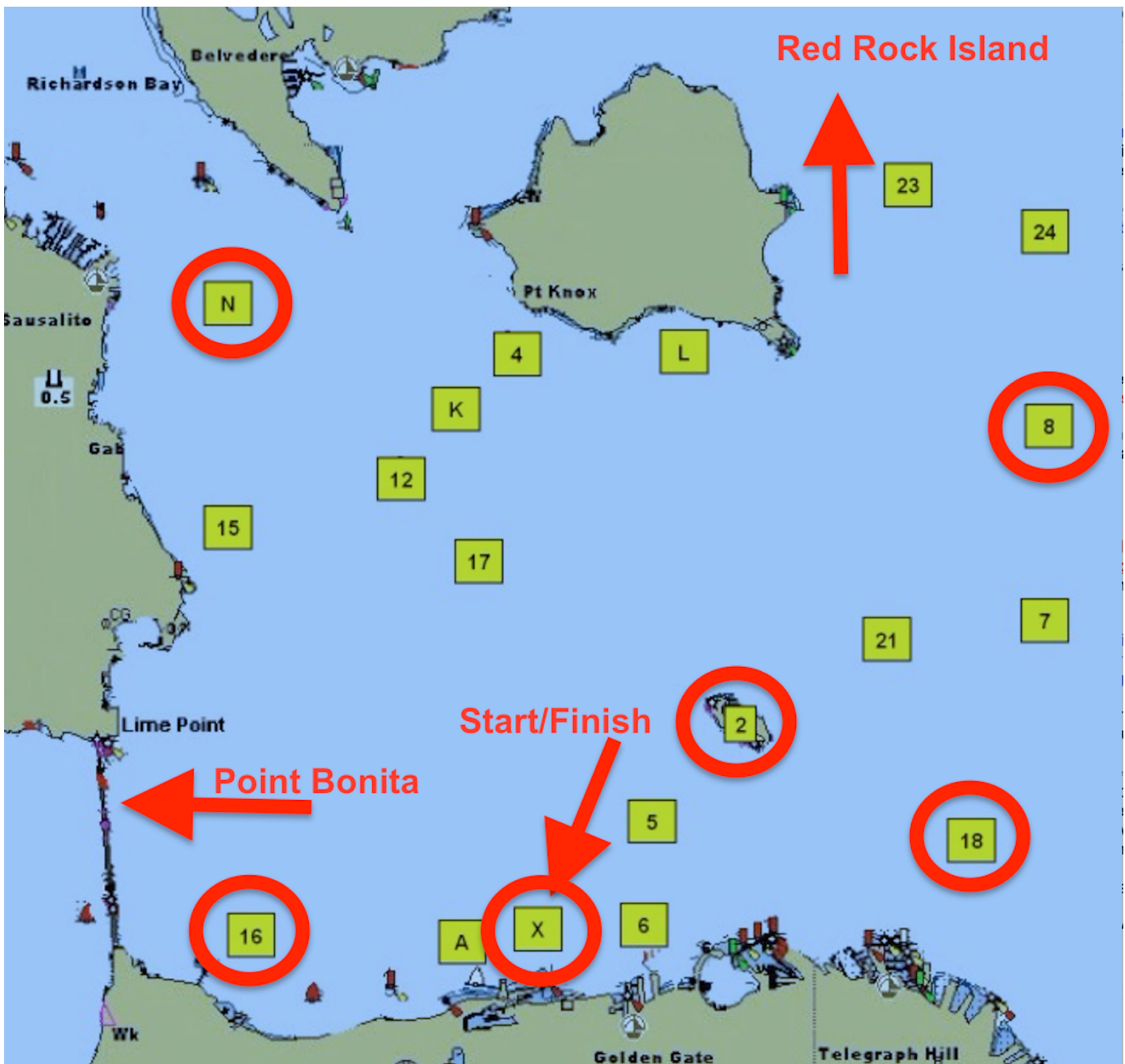
11 COURSES AND MARKS:

Course	All marks rounded to Port unless noted with S for Starboard					
1	S	16	18		F	6 nm
2	S	PB			F	8.5 nm
3	S	PB	8 S	18 S	F	15 nm
4	S	1			F	15 nm
5	S	1	18 S		F	16 nm
6	S	8	16		F	10 nm
7	S	2 S	18 S		F	4.5 nm
8	S	N	16		F	8 nm
9	S	N	16	18	F	11 nm

12/29/20 4:00 PM

PRO: Donald Wieneke dkwieneke@gmail.com 415-332-0186
Regatta Chair: Bruce Stone bruce@brucestone.com (917) 822-4060

DESCRIPTION of ROUNDING MARKS	
8	YRA Mark "8", R "4" FI 4s Horn 1 nm east of Pt. Blunt
16	YRA Mark "16", Yellow Column "C" 0.2 nm east of Fort Point "Blackaller"
18	RG "BR" FI (2+1) G6s Bell - Blossom Rock
PB	Point Bonita RG FI (2+1) R6s Bell
1	Red Rock Island
2	Alcatraz Island
X	Yellow mark approx 100 yards due north of Golden Gate YC
N	Daymark "2" FL R on channel East of Sausalito



12/29/20 4:00 PM