



THE WOMEN ON WATER REGATTA

Saturday, November 13, 2021

The Rudder Club of Jacksonville, Inc.

8533 Malaga Avenue, Jacksonville, FL 32244 (904) 264-4094

SAILING INSTRUCTIONS

1. RULES

1.1 The regatta will be governed by *The Racing Rules of Sailing* (RRS) except as modified by the rules of the First Coast Sailing Association (FCSA) and Notice of Race Articles 2 and 3.

1.2 Racing Rules 35, A4, and A5 of the RRS are changed by SI 14.1 as follows: "A boat failing to finish within 60 minutes in corrected time after the first boat in her class will be scored 'Did Not Finish' without a hearing".

2. ENTRIES

2.1 Eligible boats are those who have officially entered by completing a registration form with the Rudder Club in advance or during the registration period as set forth in the Notice of Race.

2.2 Additional eligibility requirements and class definitions are defined in the Notice of Race Articles 2 and 3.

3. SAFETY

3.1 All competitors are required to conform to the U.S. Coast Guard regulations and the RRS concerning personal floatation devices and other required equipment.

3.2 Boats shall not impede the passage of a vessel that can safely navigate only within a narrow channel or commercial fishing vessels while fishing or vessels with restricted ability to maneuver. Racing boats interfering with other vessels may be subject to protest by the Race Committee or contestants and possible disqualification.

3.3 Race Committee will monitor VHF Channel 78.

3.4 Boats shall attempt to check in with the Race Committee by sailing past on the non-course side prior to their class Warning Signal.

3.5 Boats withdrawing from a race prior to finishing shall make every effort to ensure that Race Committee is notified that they have withdrawn.

4. NOTICES TO COMPETITORS

4.1 Notices to competitors will be posted on the official notice board located on the north wall of The Rudder Club.

5. CHANGES IN THE SAILING INSTRUCTIONS

5.1 Any change in the Sailing Instructions will be posted in accordance with SI 4.1 before 12:00 on the day of the race.

5.2 Oral changes to the Sailing Instructions may be communicated to each boat while on the water and prior to her warning signal.

6. SIGNALS MADE ASHORE

6.1 Signals made ashore will be displayed on the porch of the Rudder Club.

6.2 Code Flag "AP", Answering Pennant, displayed ashore with two sound signals (one when lowered) means "The race is postponed: do not leave the dock." The warning signal will be made not less than 45 minutes after AP is lowered.

7. RACE SCHEDULE

7.1 Saturday, November 13, one race

7.2 Schedule of Events:



Registration: 10:00-11:45 am

Competitors' Meeting: 12:00 noon

Warning Signal: 12:55 pm

8. CLASS FLAGS

8.1 Class flags will be the International Numeral Pennants as depicted in the RRS.

| Class | Pennant | |
|--|---------|---|
| All Female Spinnaker & Non-Spinnaker | P1 |  |
| Cruiser Class | P2 |  |

9. RACING AREA

9.1 The racing area will be in the St. Johns River between the Buckman Bridge to the south and the Fuller Warren Bridge to the north as depicted on NOAA Chart 11492.

10. THE COURSE

10.1 Race course will be displayed from a course board on the Race Committee boat.

10.2 A single race using river navigation marks will be displayed using the designation of the River Marks as depicted in Attachment A, and the letter designation for Mark "W" and Mark "E" as described in SI 11.1 and 11.2.

11. MARKS

11.1 Marks may be government navigation marks as depicted on NOAA Chart 11492 (as corrected by Notices to Mariners), yellow inflatable Mark "E" as shown in Attachment A or orange inflatable Mark "W" described in SI 11.2. Government marks will be designated by their number as appearing on the chart. Marks "E" and "W" will be designated by their alphabetic designator. Approximate positions for the government navigation marks and Mark "E" are shown in Attachment A.

11.2 An orange inflatable mark set to windward of the starting line as a windward mark will be designated "W", WHISKEY.

11.3 A limiting mark may be set to protect the committee boat close to her and on the same end of the starting line. No boat shall pass between the limiting mark and the committee boat. (This limiting mark is not a mark of the course.)

12. START

12.1 The Starting Line will be a line between an orange flag flown on the Race Committee

Boat and a red inflated sphere set toward the left side of the course from the Committee Boat.

12.2 Boats whose warning signal has not been made shall keep clear of the starting area.

13. THE FINISH

13.1 The Finish Line will be between an orange flag flown on the Race Committee Boat and a red inflated sphere set to the right side relative to the final leg of the course.

14. TIME LIMIT

14.1 The time limit shall be 3 hours for each class. Boats failing to finish within 60 minutes elapsed time after the first boat of their class finishes will be scored "Did Not Finish" (DNF). This changes RRS Rule 35 and Rule A4.1.

15. PROTESTS

15.1 Protests shall be written on forms available at The Rudder Club. They shall be filed with the Regatta Chairman. Protest time will end one hour after the Race Committee boat docks, signaled by a horn. Protests will be heard in the approximate order received.

15.2 Protest notices will be posted on the Official Bulletin Board within 20 minutes following the protest time limit.

16. SCORING

16.1 Classes will be scored using PHRF Time on Time.

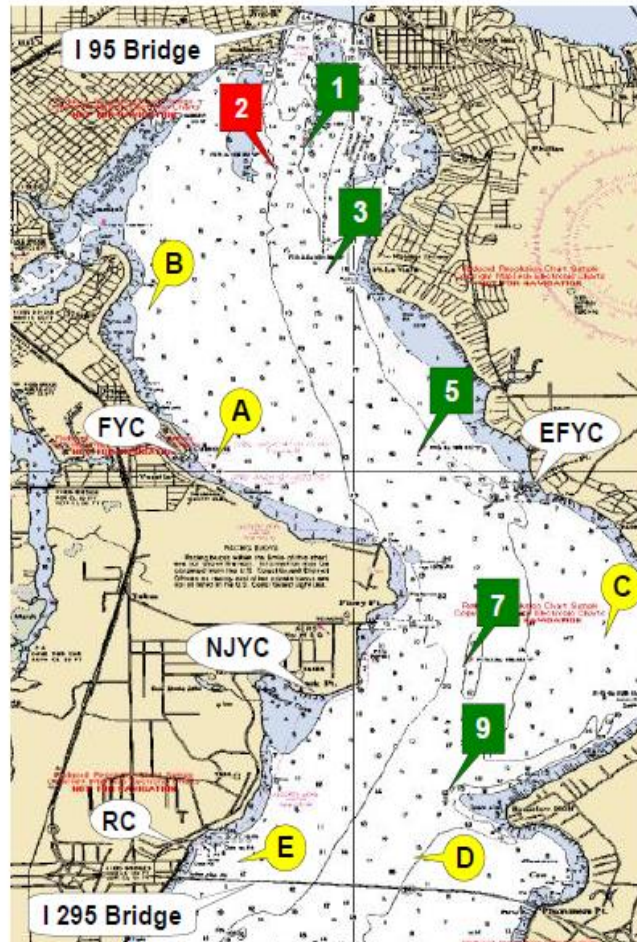
16.2 The Low Point scoring system of Appendix A will apply.

17. PRIZES

17.1 Results will be announced at The Rudder Club following the race. First, Second, and Third place prizes will be awarded in each class.

ATTACHMENT A

| Distance | nm |
|----------|-------|
| 1 to 3 | 1.039 |
| 1 to 5 | 2.787 |
| 1 to 7 | 4.643 |
| 1 to A | 2.793 |
| 1 to B | 1.570 |
| 3 to 5 | 1.773 |
| 3 to 7 | 3.615 |
| 3 to 9 | 4.638 |
| 3 to A | 1.829 |
| 3 to B | 1.126 |
| 3 to C | 3.763 |
| 5 to 7 | 1.863 |
| 5 to 9 | 2.926 |
| 5 to A | 1.468 |
| 5 to B | 2.299 |
| 5 to C | 2.029 |
| 5 to D | 3.486 |
| 7 to 9 | 1.095 |
| 7 to C | 0.977 |
| 7 to D | 1.697 |
| 7 to E | 2.240 |



*From 2011
USCG Light List*

Green 1
N 30° 17.813
W 81° 40.411

Red 2
N 30° 17.628
W 81° 40.635

Green 3
N 30° 16.780
W 81° 40.259

Green 5
N 30° 15.142
W 81° 39.466

Green 7
N 30° 13.305
W 81° 39.077

Green 9
N 30° 12.216
W 81° 39.237

Red 10
N 30° 09.513
W 81° 41.399

Green 11
N 30° 09.305
W 81° 40.794

*Also From 2011
USCG Light List*

Race Can "A"
N 30° 15.090
W 81° 41.160

Race Can "B"
N 30° 16.581
W 81° 41.539

Race Can "C"
N 30° 13.564
W 81° 37.989

Race Can "D"
N 30° 11.648
W 81° 39.522

Race Can "E"
N 30° 11.648
W 81° 40.822