



2021 LCYC STANDARD SAILING INSTRUCTIONS

1 RULES

The regatta will be governed by the rules as defined in *The Racing Rules of Sailing (RRS) 2021 - 2024*

2 NOTICES TO COMPETITORS

Notices to competitors will be posted on Regatta Network website.

3 SIGNALS MADE ASHORE

Signals made ashore will be displayed from the "Super Dock". If a postponement is signaled ashore, the warning signal will be made not less than thirty (30) minutes after flag AP is lowered.

4 SCHEDULE

The Long Distance Race will be sailed as described in the Notice of Race (NOR) for this regatta.

5 CLASS FLAG

Pennant number 1 will be used to start all races.

6 RACING AREA

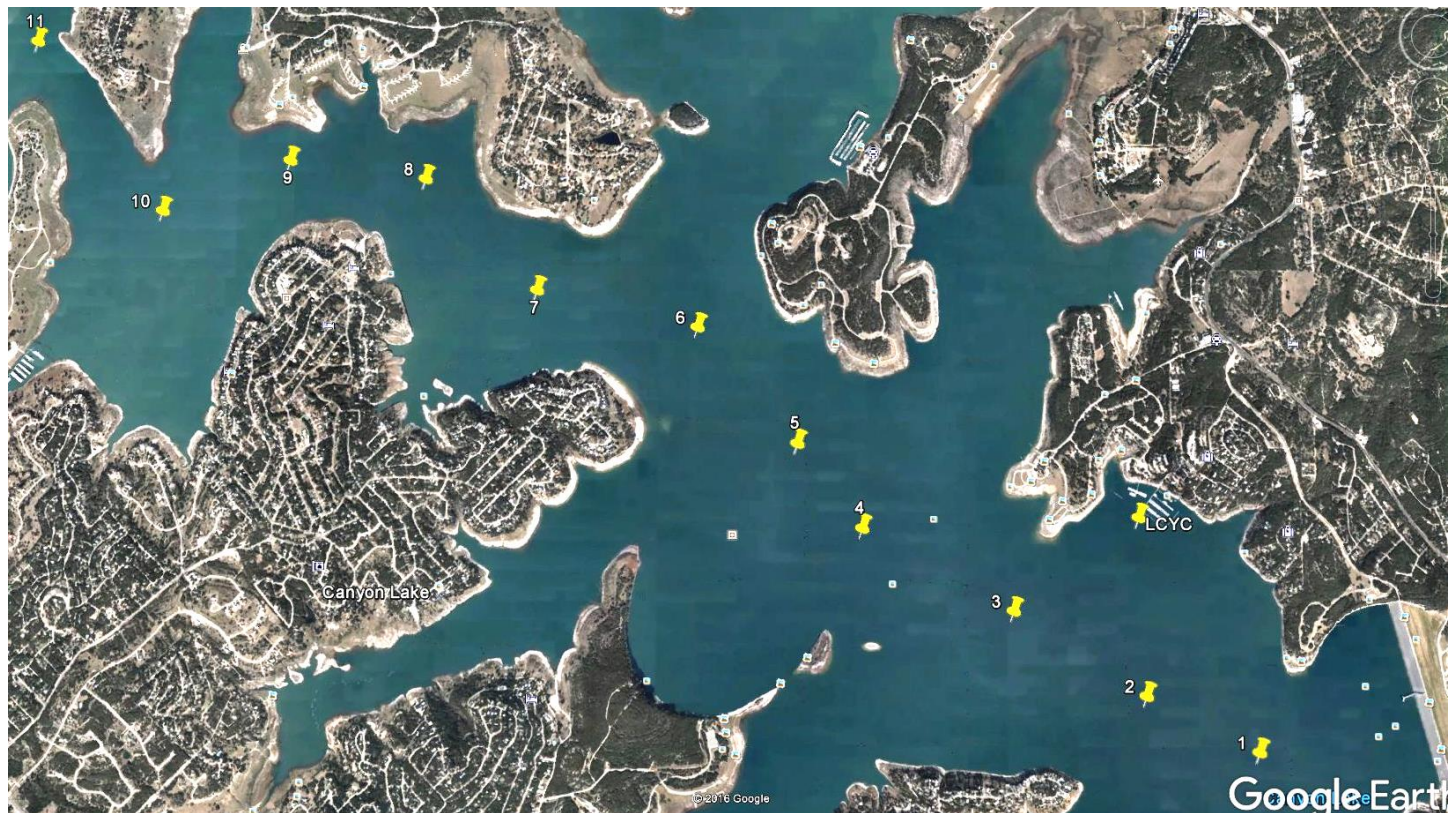
The racing area will be in the main basin of Canyon Lake.

7 COURSE[S]

Prior to the start of the race, all competitors must check-in on starboard tack with RC, stating sail number & last name, as registered in RegattaNetwork. Race Committee will acknowledge skipper's check-in once confirmation with registration is made, (**Note: Sail Numbers must match registration, unless RC is notified prior to start of races for that day**).

The following image shows the WORD White Cylinders to be used in sailing course.

Course to be sailed: (see image)



Course 1 (4.27 nm): Home – 1 – 5 – 3 – Home

Leave 1 to starboard, as well as Home Pin at start.
Leave 5 and 3 to port, as well as Home Pin at finish.

Course 2 (6.37 nm): Home – 1 – 7 – 3 – Home

Leave 1 to starboard, as well as Home Pin at start.
Leave 7 and 3 to port, as well as Home Pin at finish.

Course 3 (8.08 nm): Home – 1 – 8 – 2 – Home

Leave 1 to starboard, as well as Home Pin at start.
Leave 8 and 2 to port, as well as Home Pin at finish.

Course 4 (9.66 nm): Home – 1 – 9 – 1 – Home

Leave 1 to starboard outbound, as well as Home Pin at start.
Leave 9 and 1 returning to port, as well as Home Pin at finish.

8 STARTING LINE [STARTING SYSTEM]

The starting line will be between the RC boat and a Pin (Yellow or Orange or Red Ball mark). A **Pursuit Start** format will be used with starting times handed out on the Super Dock one hour prior to start of race. The first starting Flag will be raised at 12:00. The boat with the highest PHRF will start first at 12:00, followed by the next lowest PHRF, etc.

8a FINISH LINE

The Finish Line will be between The RC boat and a Pin (Yellow or Orange or Red Ball mark), **OR** the Orange Flag located at end of dock and White No Wake Cylinder or Red Ball mark.

9 TIME LIMITS

Any boat not finished by 17:00 will be scored DNF.

10 COMMUNICATIONS:

Racers are requested, but not required to monitor VHF Channel 68.

11 RETIREMENT:

Racers are strongly requested to report retirements to the PRO or a designated scorer in person, on VHF channel 68, or (210.289.4704).

12 PHRF EQUIPMENT

Any boat racing under the PHRF Handicap system must comply with PHRF requirements. If a boat desires to compete in the PHRF classes, she must either have the necessary equipment, or make declaration of deviations from the required equipment. Equipment deviations from PHRF requirements may result in changes to the PHRF Handicap rating assigned to that boat. Failure to declare a deviation from PHRF requirements shall, when discovered, result in being scored DISQUALIFIED NOT DISCARDABLE (DND) for the race, with the race counting toward the standings of the race, regatta, or series in accordance with RRS 2, Fair Sailing.

Race Director

Canyon Lake: Distance and headings between Fixed Marks: nm@heading

TO	FROM →	Home	1	2	3	4	5	6	7	8	9	10	11
↓	Home		0.89 @ 328	0.61 @ 353	0.54 @ 048	0.96 @ 082	1.21 @ 097	1.66 @ 108	2.23 @ 105	2.75 @ 110	3.22 @ 107	3.57 @ 102	4.21 @ 108
	1	0.89 @ 148		0.43 @ 111	0.96 @ 114	1.55 @ 114	1.90 @ 118	2.42 @ 122	2.95 @ 117	3.50 @ 119	3.94 @ 116	4.24 @ 111	4.93 @ 114
	2	0.61 @ 173	0.43 @ 291		0.54 @ 117	1.13 @ 115	1.48 @ 120	2.00 @ 124	2.53 @ 118	3.08 @ 120	3.51 @ 116	3.81 @ 110	4.51 @ 115
	3	0.54 @ 228	0.96 @ 294	0.54 @ 297		0.59 @ 113	0.94 @ 122	1.47 @ 126	1.99 @ 118	2.54 @ 121	2.98 @ 116	3.28 @ 109	3.97 @ 115
	4	0.96 @ 262	1.55 @ 294	1.13 @ 295	0.59 @ 293		0.37 @ 137	0.90 @ 135	1.40 @ 121	1.96 @ 123	2.38 @ 117	2.69 @ 109	3.38 @ 115
	5	1.21 @ 277	1.90 @ 298	1.48 @ 300	0.94 @ 302	0.37 @ 317		0.54 @ 134	1.05 @ 115	1.60 @ 120	2.04 @ 113	2.37 @ 104	3.04 @ 112
	6	1.66 @ 288	2.42 @ 302	2.00 @ 304	1.47 @ 306	0.90 @ 315	0.54 @ 314		0.58 @ 097	1.09 @ 113	1.55 @ 107	1.92 @ 097	2.55 @ 108
	7	2.23 @ 285	2.95 @ 297	2.53 @ 298	1.99 @ 298	1.40 @ 301	1.05 @ 295	0.58 @ 277		0.56 @ 129	0.99 @ 112	1.35 @ 096	1.99 @ 291
	8	2.75 @ 290	3.50 @ 299	3.08 @ 300	2.54 @ 301	1.96 @ 303	1.60 @ 300	1.09 @ 293	0.56 @ 309		0.48 @ 092	0.93 @ 077	1.47 @ 104
	9	3.22 @ 287	3.94 @ 296	3.51 @ 296	2.98 @ 296	2.38 @ 297	2.04 @ 293	1.55 @ 287	0.99 @ 292	0.48 @ 272		0.48 @ 062	1.00 @ 110
	10	3.57 @ 282	4.24 @ 291	3.81 @ 291	3.28 @ 289	2.69 @ 289	2.37 @ 284	1.92 @ 277	1.35 @ 276	0.93 @ 257	0.48 @ 242		0.76 @ 137
	11	4.21 @ 288	4.93 @ 295	4.51 @ 295	3.97 @ 295	3.38 @ 295	3.04 @ 292	2.55 @ 288	1.99 @ 291	1.47 @ 284	1.00 @ 290	0.76 @ 317	

Core of Engineers Marking	Latitude	Longitude
1	N 29 51' 54.7"	W 098 12' 31.7"
2	N 29 52' 06.1"	W 098 12' 58.1"
3	N 29 52' 23.4"	W 098 13' 29.3"
4	N 29 52' 40.4"	W 098 14' 05.2"
5	N 29 52' 58.0"	W 098 14' 20.6"
6	N 29 53' 22.3"	W 098 14' 44.6"
7	N 29 53' 30.1"	W 098 15' 23.4"
8	N 29 53' 53.7"	W 098 15' 50.7"
9	N 29 53' 57.6"	W 098 16' 23.7"
10	N 29 53' 46.9"	W 098 16' 54.4"
11	N 29 54' 23.2"	W 098 17' 26.1"
Home Mark - Just outside LCYC	N 29 52' 42.6"	W 098 12' 59.2"