



## **2021 Sarasota Bay Multihull Regatta**

### **Weta Course**

**March 5 – 7, 2021**

**Organizing Authority: Sarasota Sailing Squadron (SSS),  
Sarasota, Florida**

### **SAILING INSTRUCTIONS (SIs)**

*The notation '[NP]' in a rule of the sailing instructions (SIs) means that a boat may not protest another boat for breaking that rule. This changes RRS 60.1(a).*

#### **1 RULES**

- 1.1 The event is governed by the rules as defined in *The Racing Rules of Sailing*.

#### **2 CHANGES TO SAILING INSTRUCTIONS**

- 2.1 Any change to the sailing instructions will be posted before 0900 on the day it will take effect, except that any change to the schedule of races will be posted by 2000 on the day before it will take effect.

#### **3 COMMUNICATIONS WITH COMPETITORS**

- 3.1 Notices to competitors will be posted on the official notice board located by the Race Office or on-line at <http://www.regattanetwork.com>.
- 3.2 On shore and on the water, the race committee intends to monitor and communicate with competitors on VHF radio channel 72 and will be the primary means used by the race committee for the Competitors' Meeting.

#### **4 CODE OF CONDUCT**

- 4.1 [DP] Competitors and support persons shall comply with reasonable requests from race officials.

#### **5 SIGNALS MADE ASHORE**

- 5.1 Signals made ashore will be displayed at the flagpole in front of the clubhouse.
- 5.2 When flag AP is displayed ashore, '1 minute' is replaced with 'not less than 60 minutes' in Race Signals AP.

#### **6 SCHEDULE**

- 6.1

Date	Time	
Thursday, March 4	1800 – 2000	Pick up event materials.
Friday, March 5	0800 - 0930	Pick up event materials.
	1000	Competitors' meeting via VHF
	1130	Warning Signal – 1 <sup>st</sup> race
Saturday, March 6	1000	Warning Signal – 1 <sup>st</sup> race
Sunday, March 7	1000	Warning Signal – 1 <sup>st</sup> race

	1400	No Warning Signal after this time
--	------	-----------------------------------

- 6.2 To alert boats that a race or sequence of races will begin soon, the orange starting line flag will be displayed with one sound at least five minutes before a warning signal is made.

## **7 CLASS FLAGS**

- 7.1 The class flags are described in Attachment A.

## **8 RACING AREA**

- 8.1 Attachment A shows the location of the racing area.

## **9 COURSES**

- 9.1 The diagrams in Attachment B shows the courses, including the approximate angles between legs, the order in which marks are to be passed, and the side on which each mark is to be left.

## **10 MARKS**

- 10.1 Marks are described in Attachment A.

## **11 THE START**

- 11.1 The starting line is between a staff displaying an orange flag on the signal vessel at the starboard end and the course side of the port-end starting mark.
- 11.2 [DP] [NP] Boats whose warning signal has not been made shall avoid the starting area during the starting sequence for other races.
- 11.3 A boat that does not start within 4 minutes after her starting signal will be scored Did Not Start without a hearing. This changes RRS A5.1 and A5.2.

## **12 CHANGE OF THE NEXT LEG OF THE COURSE**

- 12.1 To change the next leg of the course, the race committee will lay a new mark (or move the finishing line) and remove the original mark as soon as practicable.

## **13 THE FINISH**

- 13.1 The finishing line is between a staff displaying a blue flag on the signal boat at the starboard end and the course side of the port end finishing mark.

## **14 PENALTY SYSTEM**

- 14.1 RRS 44.1 is changed so that the Two-Turns Penalty is replaced by the One-Turn Penalty.

## **15 TIME LIMITS**

- 15.1 Boats failing to finish within 40 minutes after the first boat in their class sails the course and finishes will be scored Did Not Finish without a hearing. This changes RRS 35, A4 and A5.1 and A5.2.

## **16 HEARING REQUESTS**

- 16.1 The protest time limit is 60 minutes after the signal boat docks. The time will be posted on the official notice board.
- 16.2 Hearing request forms are available outside the Race Office.
- 16.3 Notices will be posted no later than 30 minutes after the protest time limit to inform competitors of hearings in which they are parties or named as witnesses. Hearings will be held in the club office, beginning at the time posted.
- 16.4 Protest hearings are expected to be heard in person but may be changed to online. Instructions for online hearings will be provided by the protest committee.

## 17 SCORING

17.1 One race is required to be completed to constitute a series.

17.2 (a) When fewer than 5 races have been completed, a boat's series score is the total of her race scores.

(b) When from 5 to 11 races have been completed, a boat's series score is the total of her race scores excluding her worst score.

(c) When 12 or more races have been completed, a boat's series score is the total of her race scores excluding her two worst scores.

## 18 TRASH DISPOSAL

18.1 Trash may be placed aboard official vessels.

## 19 PRIZES

19.1 Prizes will be given to each crew placing first, second and third in each class.

19.2 Other prizes may be awarded.

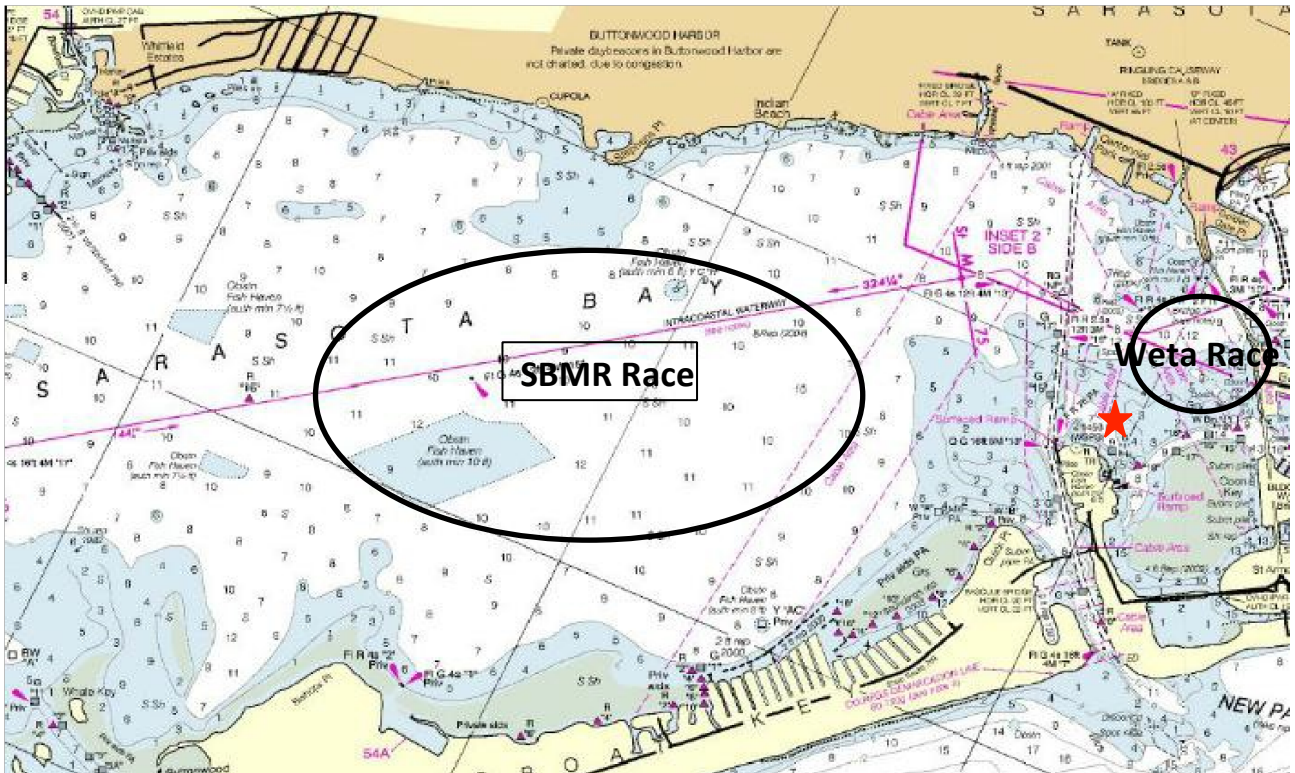
## 20 RISK STATEMENT

20.1 RRS 3 states: ‘The responsibility for a boat’s decision to participate in a race or to continue to race is hers alone.’ By participating in this event each competitor agrees and acknowledges that sailing is a potentially dangerous activity with inherent risks. These risks include strong winds and rough seas, sudden changes in weather, failure of equipment, boat handling errors, poor seamanship by other boats, loss of balance on an unstable platform and fatigue resulting in increased risk of injury.

## 21 INSURANCE

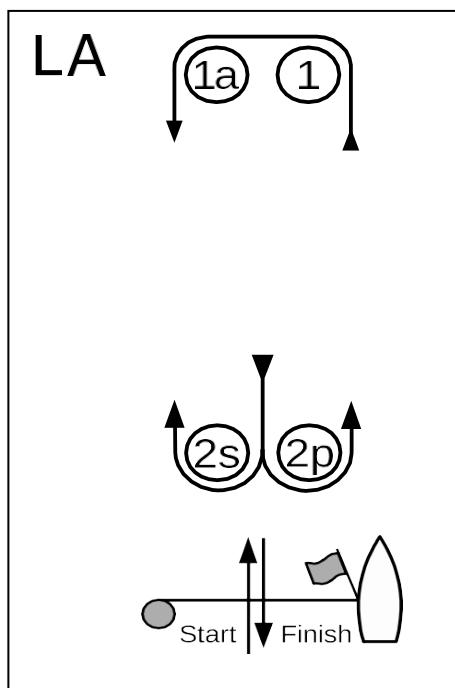
21.1 Each participating boat shall be insured with valid third-party liability insurance.

## Attachment A – Sailing Areas, Mark Description, ClassFlags

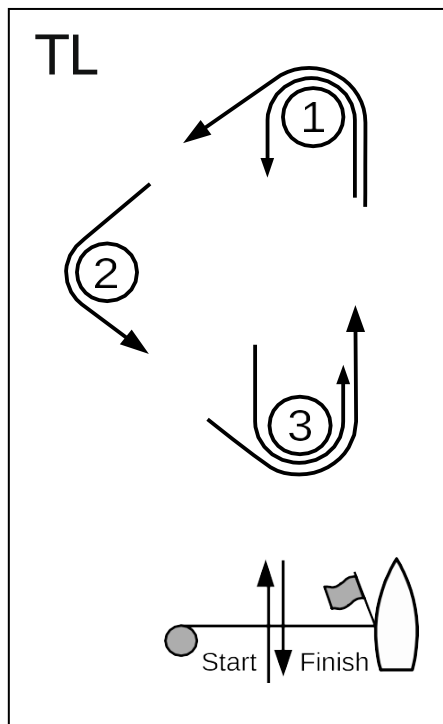


Course	VHF Channel	Mark Descriptions	Class Flags
Weta	72	Mark 1 – Orange inflatable Mark 1a - Offset mark – Red ball Change Mark 1 – Green inflatable Start, finish marks – Yellow cylinders Gate Mark 2s/2p – Orange inflatables Mark 2, Mark 3 – Orange inflatables	Weta – To be described at the competitors meeting.

## Attachment B – Course Illustrations



Course LA – Windward/Leeward with Offset Mark, Leeward Finish	
Signal	Mark Rounding Order
LA2	Start – 1 – 1a – 2s/2p – 1 – 1a – Finish
LA3	Start – 1 – 1a – 2s/2p – 1 – 1a – 2s/2p – 1 – 1a – Finish
LA4	Start – 1 – 1a – 2s/2p – 1 – 1a – 2s/2p – 1 – 1a – 2s/2p – 1 – 1a – Finish



Course TL – Triangle, Leeward Finish	
Signal	Mark Rounding Order
TL2	Start – 1 – 2 – 3 – 1 – Finish
TL3	Start – 1 – 2 – 3 – 1 – 3 – 1 – Finish
TL4	Start – 1 – 2 – 3 – 1 – 3 – 1 – 3 – 1 – Finish