



2021 GBCA Texas Race Week

June 3-5, 2021

Organizing Authority: Galveston Bay Cruising Association
Galveston, TX USA

SAILING INSTRUCTIONS

1 RULES

- 1.1 The event is governed by the *rules* as defined in *The Racing Rules of Sailing (RRS)*.
- 1.2 The current PHRF Regulations as administered by PHRF Galveston Bay.
- 1.3 The current IMS Rule (measurement) and ORC Rating System (ratings) rules and regulations. (www.orc.org/rules)
- 1.4 Each boat shall carry an operating VHF radio capable of transmitting and receiving on Channels 13, 14, 16, 69, and a cell phone, the number of which will be on file with the Race Committee (via registration).
- 1.5 The notation “[DP]” in a rule in these Sailing Instructions means that the penalty for a breach of a rule may, at the discretion of the protest committee, be less than disqualification.

2 CHANGES TO SAILING INSTRUCTIONS

- 2.1 Any change to the sailing instructions will be posted before 0800 on the day it will take effect, except that any change to the schedule of races will be posted by 2000 on the day before it will take effect.
- 2.2 Changes to a sailing instruction may be made on the water by contacting the specific class(s) affected by VHF notifying of the change.

3 COMMUNICATIONS WITH COMPETITORS

- 3.1 Notices to competitors will be posted on the official notice board located at the official regatta website located at <https://www.regattanetwork.com/event/21758> .
- 3.2 On the water, the race committee intends to monitor and communicate with competitors on VHF radio channel **69**.
- 3.3 The following communications ***may*** be made by the race committee

on VHF.

- General Race Committee intentions

- 3.4 [DP] While racing, except in an emergency, a boat shall not make voice or data transmissions and shall not receive voice or data communication that is not available to all boats.
- 3.5 If so equipped, each boat shall power on and transmit using their Automatic Identification System (AIS) continuously while racing.
- 3.6 The use of a tracking program (like RaceQs or Yellowbrick) may be used for post-race evaluation only.

4 CODE OF CONDUCT

- 4.1 [DP] Competitors and support persons shall comply with reasonable requests from race officials.
- 4.2 [DP] Competitors and support persons shall handle any equipment provided by the organizing authority with care, seamanship, in accordance with any instructions for its use and without interfering with its functionality.

5 SIGNALS MADE ASHORE

- 5.1 Signals made ashore will be displayed on the official notice board located at the official regatta website located at https://www.regattanetwork.com/event/21758#_newsroom .
- 5.2 When flag AP is displayed ashore, '1 minute' is replaced with 'not less than 60 minutes' in Race Signals AP.
- 5.3 In the event of signals made ashore, the Race Committee **may** also notify participants via SMS text message to the number provided at registration.

6 SCHEDULE OF RACES

- 6.1 Schedule

Date	Time	Event
Friday, May 28	19:00	Competitors briefing, in-person at the GBCA clubhouse and virtual (link to be forwarded prior to event).
Thursday, June 3	11:00	First warning signal.
Thursday, June 3	17:00	Immediately following racing, open-air social at Float Bar (2828 Seawall Blvd.)

Friday, June 4	10:00	First warning signal.
Friday, June 4	17:00	Immediately following racing, open-air social at Yaga's Café (2314 Strand)
Saturday, June 5	10:00	First warning signal.
Saturday, June 5	18:00	Post racing awards ceremony, the Elissa/Texas Seaport Museum (2200 Harborside Drive).

- 6.2 To alert boats that a race or sequence of races will begin soon, the orange starting line flag will be displayed with one sound at least five minutes before a warning signal is made.

7 CLASS FLAGS

- 7.1 The class flags are as follows:

	<u>Class</u>	<u>Class Flag</u>
	ORC Spin	Red
	PHRF Spin	Purple
	PHRF Non-Spin	Green
	Cruising Club-Spin	Pink

8 RACING AREA

- 8.1 The race area will be the Bolivar Roads, Galveston Jetties, and the waters of the Gulf of Mexico.
- 8.2 SI Addendum #1 shows the location of the racing area.

9 COURSES

- 9.1 The chart in SI Addendum #2 shows the potential marks of the course, including the approximate latitude/longitude.
- 9.2 No later than 09:00 on each race day, the Race Committee will post the course(s) for the day via the official notice board. This information shall include: 1) order marks are to be rounded, approximate bearing, approximate distance, and rounding direction.

10 MARKS

- 10.1 Mark(s) are fixed marks, channel markers, offshore platforms, artificial reef buoys, and/or 8' orange tetrahedrons.
- 10.2 In the event a mark is missing, a boat shall round the GPS

coordinates as provided in Addendum #2.

11 OBSTRUCTIONS

- 11.1 Special attention is called to the shoal area that exists along the south side of the Galveston jetties. Skippers should have the most recent charts of the racing area and all Notice to Mariners.
- 11.2 Yachts MUST obey all maritime RULES OF THE ROAD when encountering vessels not racing. This is especially important when dealing with ship and other commercial traffic. Special attention is given to the Preamble of Part 3 of the RRS. Serious violation of applicable regulations shall be cause for disqualification by the Race Committee without hearing.

12 THE START

- 12.1 Races will be started using RRS 26 with the warning signal made 5 minutes before the starting signal.
- 12.2 The starting line is between a staff displaying an orange flag on the adjacent location on the beach, or signal vessel if on station, and the course side of HSC marker #11.
- 12.3 Boats whose warning signal has not been made shall avoid the starting area during the starting sequence for other races.
- 12.4 If any part of a boat's hull is on the course side of the starting line at her starting signal and she is identified, the race committee may attempt to hail her sail number. Failure to hail her number, failure of her to hear such a hail, or the order in which boats are hailed will not be grounds for a request for redress. This changes RRS 62.1(a).
- 12.5 A boat that does not start within 10 minutes after her starting signal will be scored Did Not Start without a hearing. This changes RRS A5.1 and A5.2.

13 THE FINISH

- 13.1 The finishing line is between a staff displaying an orange flag on the adjacent beach, or an RC signal vessel if on station, and the course side of HSC Marker #11.
- 13.2 If the race committee is absent when a boat finishes, she shall report her finishing time, and her position in relation to nearby boats, to the race committee at the first reasonable opportunity.

14 PENALTY SYSTEM

- 14.1 The first two sentences of RRS 44.1 are changed to:

A boat may take a One-Turn Penalty when she may have broken one or more rules of Part 2 or Rule 31 in an incident while racing. However, when she may have broken one or more rules of Part 2 while in the zone around a mark other than a starting mark, her penalty shall be a Two-Turns Penalty.

- 14.2 Alternatively, a boat may accept a Scoring Penalty as described in RRS 44.3. The Scoring Penalty shall be 20% of the boats entered unless the incident occurred within the zone of any mark, in which case the scoring penalty shall be 40% of the boats entered.

15 TIME LIMITS

- 15.1 The time limit for each race shall be 17:00. Yachts which have not finished at the expiration of the time limit will be scored TLE without a hearing. This changes rules 35, A4, and A5.

16 HEARING REQUESTS

- 16.1 The protest time limit is within 60 minutes after the Time Limit for the particular race being protested has expired.
- 16.2 The protesting party shall notify the Race Committee of the intent to file a protest via VHF channel 69, or by cell phone, at the first reasonable opportunity prior to leaving the finishing area.
- 16.2 Paper hearing request forms are available online at www.ussailing.org , however electronic filings using the US Sailing app are preferred by the protest committee. Please forward all filings to may.chris.w@gmail.com.
- 16.3 The protest committee will endeavour to post the notice of protests and the hearing schedule within 30 minutes after the close of the deadline for filing protests. Notices and schedules will be posted using the Regatta Network official notice board at: <https://www.regattanetwork.com/event/21758>
- 16.4 Notices of protests by the race committee, or protest committee will be posted to inform boats under RRS 61.1(b).
- 16.5 Breaches of Sailing Instructions 6.2, 11.2, or 18.6 will not be grounds for a request for redress by a boat. This changes RRS 60.1(a)
- 16.6 RRS 62.2(a) and 66.2(a) do not apply.
- 16.7 The US Sailing prescription to RRS 63.2 does not apply.

17 SCORING

- 17.1 One race is required to be completed to constitute a regatta.
- 17.2 A boat's regatta score is the total of her race scores without exclusion. This changes RRS A2.1.
- 17.3 PHRF and Club Handicap classes will be scored using Time on Time with the following conversion formula: $TCF=650/(550+x)$, where x equals PHRF Handicap or Club Handicap.
- 17.4 Multihulls shall use their TOMA handicap rating. A boat without a published rating will be given one calculated by Race Committee using the SCHRS "Ratings Calculator".
- 17.5 ORC boats will be scored Time on Time using the All Purpose Triple Number data per each boat's certificate.
- 17.6 No later than the warning signal for each race, the Race Committee will announce the planned appropriate "Low", "Medium", or "High" rating number to be used for that race. The race committee reserves the right to later change the rating number used based on the average conditions observed by the Race Committee on the Race Committee vessel, shore site, or buoy data within the race course, over the course of the race. Failure to announce via VHF, or changing the rating number announcement, shall not be grounds for redress. This changes RRS 60.1(b), 60.3(b), and 62.1(a).

ORC Stated Triple Number Wind Ranges

Low		Less than 9 kts
Medium	More than 9 kts	Less than or Eq. to 14ts
High		Greater than 14 kts

18 SAFETY REGULATIONS

- 18.1 Prior to the first warning signal each day, each boat is required to check in by VHF, or by passing the stern of the respective race committee vessel (if on station) on starboard tack.
- 18.2 [DP] A boat that retires from a race shall notify the race committee at the first reasonable opportunity by VHF or cell phone.
- 18.3 Contacts for the Race Committee: Chris May 713-591-8115, may.chris.w@gmail.com

19 EQUIPMENT AND MEASUREMENT CHECKS

- 19.1 A boat or equipment may be inspected at any time for compliance with the class rules, notice of race and sailing instructions.

20 OFFICIAL VESSELS

- 20.1 Official vessels will be identified with either the traditional race committee flag (red, fouled anchor on a blue field with red letters "R" and "C"), or GBCA burgee.

21 TRASH DISPOSAL

- 21.1 Trash shall be properly disposed after the conclusion of each race.

22 PRIZES

- 22.1 Prizes will be given for 1st through 3rd places in each class based on number of entries as detailed in the Notice of Race.
- 22.2 The Texas Race Week Regatta is the second of three events of the Texas Offshore Circuit (TORC). (The LYC Heald Bank Offshore Race and the HYC Reach Down the Beach constitute the other events). Texas Race Week results will count twice towards the Texas Navy Trophy if they have entered all three eligible races in the same class.
- 22.3 Boats sailing in the ORC Spinnaker Class shall be eligible to compete for the Marion Hayes Memorial perpetual trophy.
- 22.4 Boats sailing in the PHRF Non-Spinnaker class will be eligible for S. Rhoads Fisher perpetual trophy if they have sailed in all three eligible TORC events in the same class.

23 RISK STATEMENT

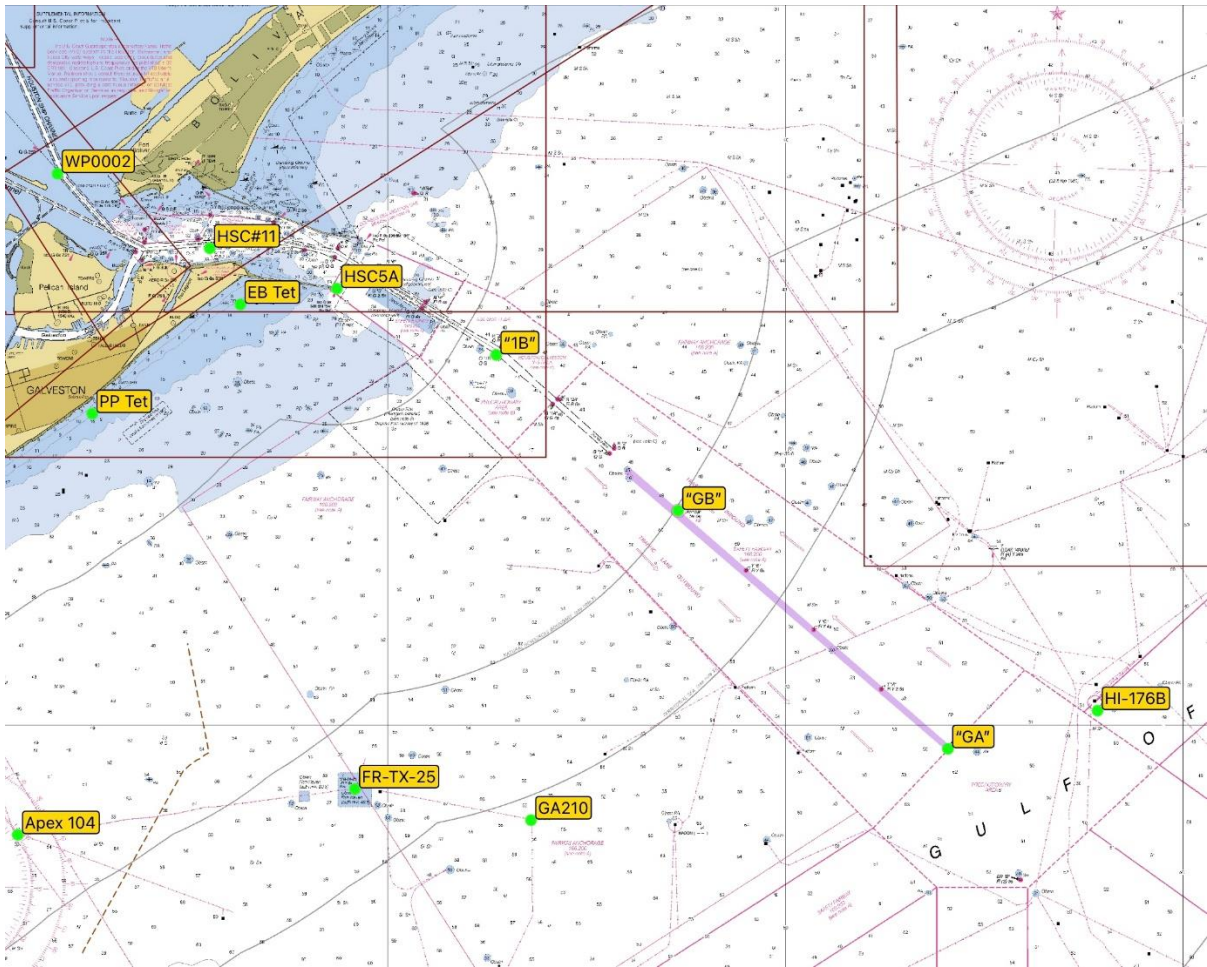
- 23.1 RRS 3 states: 'The responsibility for a boat's decision to participate in a race or to continue to race is hers alone.' By participating in this event each competitor agrees and acknowledges that sailing is a potentially dangerous activity with inherent risks. These risks include strong winds and rough seas, sudden changes in weather, failure of equipment, boat handling errors, poor seamanship by other boats, loss of balance on an unstable platform and fatigue resulting in increased risk of injury. **Inherent in the sport of sailing is the risk of permanent, catastrophic injury or death by drowning, trauma, hypothermia or other causes.**

24 INSURANCE

- 24.1 Each participating boat shall be insured with valid third-party liability insurance with a minimum cover of \$300,000 per incident or the equivalent.

SI ADDENDUM #1

Race Area



SI Addendum #2
Potential Marks of the Course

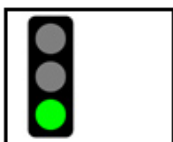
Mark	Latitude (approx.)	Long. (approx.)
Galveston Jetty HSC 11	N 29° 20.53'	W 094° 44.47'
Galveston Jetty HSC 5A	N 29° 19.67'	W 094° 41.34'
Galveston Entrance "1B"	N 29° 18.17'	W 94° 37.26'
Galveston Entrance "GB"	N 29° 14.44'	W 94° 32.41'
Galveston Entrance "GA"	N 29° 09.28'	W 94° 25.54'
Platform - "HI-176B"	N 29° 10.19'	W 94° 22.08'
Platform - "GA-210"	N 29° 07.54'	W 94° 36.23'
TPWD Buoy - "FR-TX-25"	N 29° 08.35'	W 94° 40.49'
Platform - "Apex 104-1"	N 29° 07.34'	W 94° 49.17'
Orange Tet. - "EB Tet"	N 29° 19.29'(approx.)	W 094° 43.70'(approx.)
Orange Tet. - "PP Tet"	N 29° 16.93'(approx.)	W 094° 47.31'(approx.)

EXAMPLE morning posting of course for the day.

Notices To Competitors

Texas Race Week Regatta
 June 3 - 5, 2021

Current Information



TEST - Courses for Thursday, December 31, 2236

Posted on May 24, 2021 21:52 EST

ORC Spinnaker, PHRF - Spinnaker

Mark	Distance (nm)	Bearing (°)	Rounding
1Start @ HSC 11	-		Port
2HSC 5A	2.93	108	Starboard
3FR-TX-25	11.06	178	Port
4Gal. Ent. - "GB"	9.39	049	Port
5HSC 5A	8.94	303	Port
6Finish @ HSC 11	2.93	288	Starboard
Total Dist	35.25		

Thank you to our 2021 Sponsors!

GBCA 2021 SPONSORS



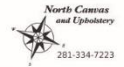
CRUZAN RUM



GOLD SPONSORS



G&C SAILMAKERS



LYNK REMOTE TECHNOLOGIES

