

2021 PBYC SPRING SERIES

SAILING INSTRUCTIONS

ORGANIZING AUTHORITY: Pierpont Bay Yacht Club, Ventura, California.

Due to the ongoing COVID-19 pandemic, racers are strongly encouraged to follow state and local guidelines for preventing its spread; such as frequent hand washing, maintaining 6 feet between non-household persons, and wearing face coverings. PBYC's clubhouse is closed at this time. There will be no after-race social events.

1. **RULES:** This series will be governed by the *rules* as defined in the *Racing Rules of Sailing* (RRS). The U.S. Safety Equipment Requirements (SERs) apply. RRS 27.1 will be changed per paragraph 7.3; RRS 32.2 per paragraph 9.1; RRS 63.1 and A5 per paragraph 9.3; SERs per paragraph 13. ORCA entries shall carry safety equipment per ORCA Bylaws Section 6.
2. **ENTRIES:** Eligible boats may be entered by completing registration via Regatta Network. Entries close at 1700 on the Friday preceding each race day. The Regatta Network link is https://www.regattanetwork.com/clubmgmt/applet_club_events_combined.php?CLUB_ID=6297. PHRF area A Random Leg Course handicaps will be used. Regardless of class, PHRF-handicapped boats are required to have a current PHRF rating by February 27, 2021 to be eligible for series trophies.
3. **NOTICES TO COMPETITORS:** Notices to competitors will be posted on Regatta Network's Official Notice Board.
4. **CHANGES TO SAILING INSTRUCTIONS:** Any change to the Sailing Instructions will be posted Regatta Network's Official Notice Board before 9:00 am on the day it will take effect.
5. **SCHEDULE OF RACES:** The scheduled time of the warning signal for the first class is 10:55 am on each race day. Races are scheduled as follows:
 - Race #1: Saturday, February 6, 2021
 - Race #2: Saturday, February 27, 2021
 - Race #3: Saturday, March 13, 2021

6. CLASSES:

6.1 Class assignments will be posted on the Regatta Network Official Notice Board after 1700 on the Friday preceding each race day. There will be no in-person skippers meeting. There will be one or more PHRF handicapped Spinnaker classes, one or more Non-Spinnaker classes, and an ORCA-handicapped class.

6.2 Class Flags: Class flags will be solid color as described below:

Class	Flag
A	Red
B	White
C	Green
D	Yellow
E	Blue
F	Orange

6.3 All boats shall check in with the Race Committee by radio on VHF Ch 69 prior to their start.

7. THE COURSES:

- 7.1 The courses will be chosen from the 2021 PBYC Spring Series Course Chart, which is hereby made part of these Sailing Instructions. The MARKS are described in this Course Chart.
- 7.2 The approximate compass bearing from the starting line to the first mark is indicated on the Course Chart.
- 7.3 Designation of the course to be sailed will be signaled from the race committee boat before or with the warning signal for the first starting class. For succeeding classes, the course signal will be displayed with or as soon as practicable following the warning signal for that class. This changes RRS Rule 27.1. Course numbers are black on white placards displayed on the committee boat in such a location that provides greatest visibility to the racers.
- 7.4 When an oil platform is a mark of the course, its associated mooring buoy(s) are also marks of the course. Such buoys are to be passed on the same side as the oil platform is to be passed.

8. THE START:

- 8.1 The RC will attempt to start the classes with no delay between the starting signal of one class and the warning signal of the next class (rolling sequence).
- 8.2 The starting line will be located between the course side of a permanent mark offshore from the Mandalay Power Plant as the port-end mark and an orange flag or shape mounted on the Committee Boat as the starboard-end mark.
- 8.3 Boats whose warning signal has not been made shall keep clear of the starting area and of boats whose warning signal has been made.

9. THE FINISH:

- 9.1 The finish shall be in the Ventura Harbor entrance channel on a line between the seaward-most palm tree on the starboard (south) shore, and a statue on the port shore. If conditions in the Ventura Harbor entrance warrant, the RC may instruct racers to record their finish times when crossing a line between the whistle buoy (R2) and the green flashing light on the detached breakwater. This line may be crossed in either direction, but must be crossed within 3 boat-lengths of the whistle buoy. This alternate finish will be signaled before the start by code flag "S" displayed on the Committee Boat. This changes RRS Rule 32.2.
- 9.2 The first finisher is requested to notify the RC by VHF (Ch 69) or by phone (PBYC's phone number is (805) 644-6672; the PRO's cell number is (805) 444-0223) when approximately 30 minutes from the finish to allow the RC time to man the finish line. The RC will monitor VHF Channel 69 throughout the race. The Race Committee will remain on station until 6 pm. Boats finishing after that time shall record their finish time by GPS reference and report it to the Race Committee at the first reasonable opportunity.
- 9.3 Spinnakers shall be struck at the elbow of the detached breakwater. Any boat sailing beyond this point with a spinnaker set will be scored DSQ by the RC without a hearing. This changes RRS Rules 63.1 and A5.
- 9.4 Boats finishing after dark are advised to illuminate the sail number and hail the RC for acknowledgement.

10. RETIREMENT: A boat that has started and subsequently retires shall notify the RC as soon as possible. The RC will monitor VHF Channel 69 throughout the race. PBYC's phone number is (805) 644-6672; the PRO's cell number is (805) 444-0223.

11. PROTESTS: Protests shall be prepared on forms available online,

<https://cdn.ussailing.org/wp-content/uploads/2018/01/US-Sailing-2017-2020-Protest-Form.pdf> or via the RRS app and emailed to the PRO at rcountess@aol.com within 2 hours of the finish of the protesting boat or within 2 hours of her return to harbor if she retires. The protest committee will hear protests via Zoom teleconference. The Zoom link will be communicated to protestor and protestee.

12. SCORING: The Low-Point Scoring System (Appendix A of the Racing Rules) applies. The finishing positions of boats not entered in the series will be disregarded for series scoring; however, they are eligible for daily trophies. This is a 3-race series with no throw-outs.

13. SAFETY EQUIPMENT: All PHRF classes shall carry the safety equipment specified by the U.S. Safety Equipment Requirements for U.S. Nearshore Races (Definition 1.0.3). Refer to: https://www.ussailing.org/wp-content/uploads/2020/01/US_SER_2019.0_Categories.pdf In addition, lifeline requirements 2.4.1 – 2.4.8 apply with the exception that coated lifelines are permitted. All ORCA class entries shall carry the safety equipment specified by ORCA Bylaws Section 6. All boats regardless of class shall carry a VHF radio capable of transmitting and receiving on channels 16 and 69.

14. NON-SPINNAKER DEFINITIONS for PHRF Boats:

14.1 No spinnakers or spinnaker-like sails such as flashers, cruising ‘chutes, MPSs, gennakers, etc. are allowed. All headsails must meet the measurements of RRS 50.4.

14.2 Only one spinnaker pole or whisker pole may be used at a time and, when in use, shall be attached to the foremost mast.

14.3 The use of headsails larger than 155% LP carries a 6 second per mile penalty unless the boat is already rated for such larger sail.

14.4 More than one headsail may be carried set, and the headsails need not be attached to the forestay.

15. TROPHIES:

15.1 Series trophies will be awarded at a time when we are allowed to gather in groups. The number of series trophies awarded will be as follows:

<u>Number of Boats in the Class</u>	<u>Trophies</u>
2-3	1 st Place
4-6	1 st & 2 nd Place
7-or more	1 st , 2 nd & 3 rd Place

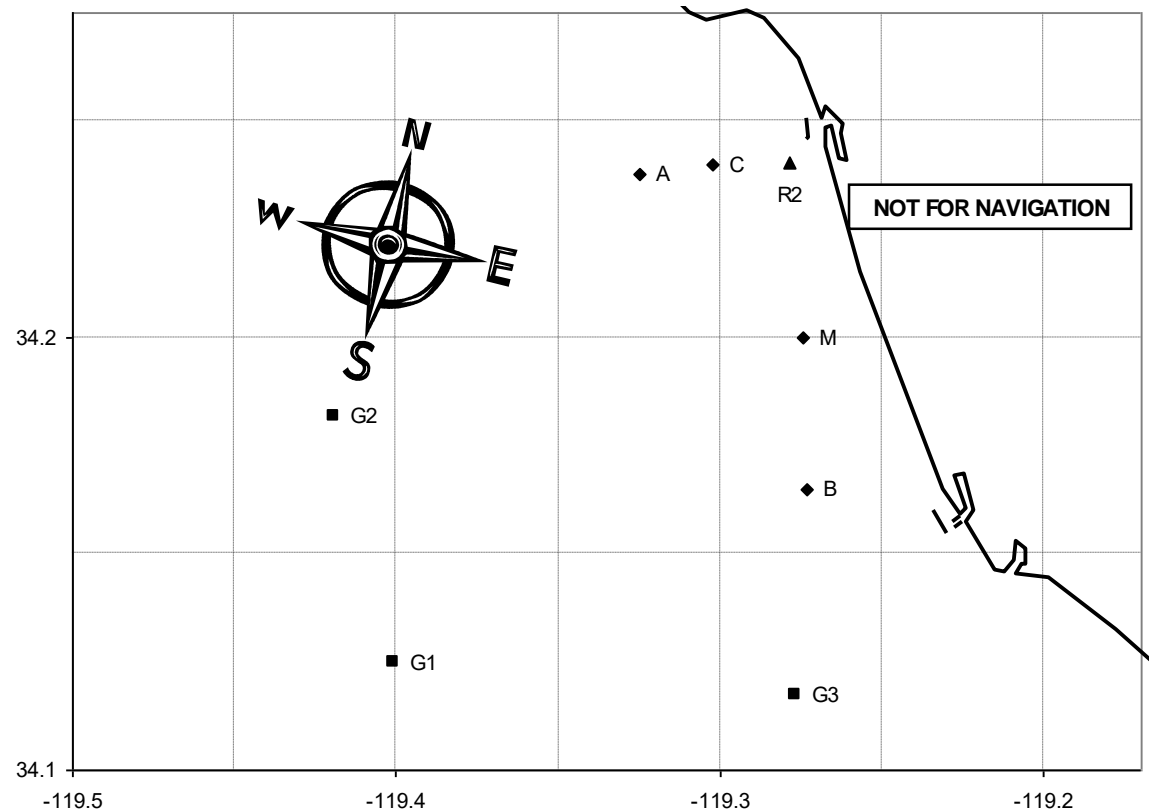
16. DISCLAIMER OF LIABILITY: Competitors participate in this event entirely at their own risk. See RRS Rule 3, Decision to Race. The organizing authority will not accept any liability for material damage or personal injury or death sustained in conjunction with or prior to, during, or after the event. Racers release PBYC, its officers, agents, committee persons, and sponsors from any and all liability for any injury to crew or damage to vessel arising out of participating in this event to the extent that such release does not discharge the racer’s insurance carrier under the provisions of the insurance policies on the vessel.

17. INSURANCE

Each participating boat shall be insured with valid third-party liability insurance with a minimum cover of \$300,000 per incident or the equivalent.

2021 PBYC SPRING SERIES COURSE CHART

#	Course	Approx. Heading to 1st Mark, °M	Approx. Length
1	S Bs R2s F	158	7.3
2	S Bs Cp Ap F	158	12.2
3	S Bs As F	158	11.4
4	S Bs G2s F	158	18.7
5	S Bs G1s R2s F	158	19.4
6	S G3s R2s F	165	13.1
7	S G3s As F	165	16.1
8	S G3s R2p Ap F	165	18.2
9	S G3s G1s R2s F	165	21.3
10	S G1s R2s F	220	18.0
11	S G1s As F	220	19.0
12	S G1s G2s F	220	20.2
13	S G1s R2p Ap F	220	23.0
14	S G2s R2s F	250	16.2
15	S G2s Mp R2s F	250	18.2
16	S G2p Mp Cs F	250	19.4
17	S G2s R2p Ap F	250	21.3
18	S As F	300	7.0
19	S As Cs As F	300	9.9
20	S As Mp R2s F	300	10.7
21	S Ap Mp Cs F	300	11.9
22	S Ap Bp R2s F	300	15.0
23	S R2p Ap F	340	8.3
24	S R2p Bp R2s F	340	12.1
25	S R2p G2p F	340	19.2
26	S Cs F	320	4.4



MARKS

- A Fish Sticks spar buoy
- B Wes spar buoy
- C Chips spar buoy
- M Mandalay spar buoy
- R2 Whistle buoy R"2V"
- G1 Platform Gail
- G2 Platform Gilda
- G3 Platform Gina
- S Start in vicinity of Mark M; see Sailing Instructions
- F Finish at Ventura Harbor; see Sailing Instructions

APPROXIMATE LOCATION

- | | |
|----------------|------------------|
| L: 34° 14.5' N | Lo: 119° 19.8' W |
| L: 34° 9.9' N | Lo: 119° 16.4' W |
| L: 34° 14.4' N | Lo: 119° 18.2' W |
| L: 34° 12.0' N | Lo: 119° 16.5' W |
| L: 34° 14.4' N | Lo: 119° 16.7' W |
| L: 34° 7.5' N | Lo: 119° 24.0' W |
| L: 34° 10.9' N | Lo: 119° 25.1' W |
| L: 34° 7.0' N | Lo: 119° 16.6' W |