

## HYC Midwinter Regatta February 20-21, 2021

Organizing Authority: The Houston Yacht Club, Shoreacres, Texas

### SAILING INSTRUCTIONS

#### 1. RULES

- 1.1 The regatta will be governed by the rules as defined in *The Racing Rules of Sailing (2021-2024)* (RRS).
- 1.2 If there is a conflict between the Sailing Instruction and the Notice of Race, the Sailing Instructions will prevail.

#### 2. ELIGIBILITY AND ENTRY

- 2.1 Reference is made to the eligibility and entry requirements provided in the Notice of Race.

#### 3. NOTICES TO COMPETITORS

- 3.1 Notices to Competitors will be posted on the official “HYC Race Information” notice board located in the breezeway adjacent to the offices of The Houston Yacht Club.
- 3.2 Notices will also be uploaded to Race Documents section of the Regatta Network event page.

#### 4. CHANGES TO SAILING INSTRUCTIONS

- 4.1 Any change to these Sailing Instructions will be posted before 0800 on the day it will take effect, except that any change to the schedule of races will be posted by 2000 on the day before it will take effect.
- 4.2 For the PHRF line, the race committee may, at its discretion, change the Sailing Instructions on the water, as follows:
  - 4.2.1 Changes will be communicated after code flag “L” is raised before the warning signal for which the first race to which the changes apply.
  - 4.2.2 The change will be communicated via VHF and orally at the stern of the Race Committee signal boat.

#### 5. SIGNALS MADE ASHORE

- 5.1 Signals made ashore shall be displayed from the signal staff on the lawn of The Houston Yacht Club.
- 5.2 When the Answering Pennant (AP) is displayed ashore, “1 minute” is replaced with “not less than 60 minutes” in Race Signals.

#### 6. SCHEDULE OF RACES

- 6.1 Races will be sailed according to the schedule shown in the Notice of Race.
- 6.2 For the PHRF line:
  - 6.2.1 All times are GPS times.
  - 6.2.2 AP over A may be displayed with no sound while boats are finishing. This means “No more racing today”.

## **7. CLASS FLAGS**

- |     |              |             |
|-----|--------------|-------------|
| 7.1 | PHRF Pursuit | Maroon Flag |
| 7.2 | J/24         | J/24 Flag   |
|     | J/105        | J/105 Flag  |
|     | Ensign       | Ensign Flag |

## **8. RACING AREA**

- 8.1 All classes shall sail around designated marks in the area bounded by Morgan's Point to the North, the Bayport Ship Channel to the South, the Houston Ship Channel to the East and the La Porte/Shoreacres shoreline on the West. The racing area is shown in attachment A.
- 8.2 Boats shall not enter any ship channel while racing. Ship channels are designated as obstructions.

## **9. CHECK IN**

- 9.1 Prior to the warning for the first race of each day, each boat shall check-in with, and be recognized by, the Race Committee Signal Boat.
- 9.2 A boat shall check-in by passing close astern, on starboard tack and shall hail her sail number
- 9.2.1 In addition, PHRF sailors shall also hail their PHRF rating and whether she is racing spinnaker or non-spinnaker.
- 9.3 A boat properly checked in shall receive confirmation from the Race Committee.
- 9.4 A boat which fails to check-in properly may be scored DNC for the first race of the day.

## **10. THE COURSE**

- 10.1 For the WL line:
- 10.1.1 Courses can be found in RRS Appendix S.
- 10.1.2 Mark 2s is deleted. This means no leeward gates.
- 10.1.3 WL Race Committee Boat will display the course code on a white board near the stern
- 10.2 For the PHRF line:
- 10.2.1 Courses can be found in attachment B.
- 10.2.2 PHRF Race Committee Boat will display a numeral pennant indicating the course to be sailed.

## **11. MARKS**

- 11.1 The WL line will consist of yellow tetrahedrons for course marks and an orange ball for the pin end of the starting line.
- 11.2 The PHRF line marks are visualized in attachment A. The coordinates of these marks are as follows:
- Mark #1 "The Judges Stand" **29° 37.367' N, 94° 59.726' W**
  - Mark #2 "The High Range" **29° 37.790' N, 94° 58.214' W**
  - Mark #3 A large yellow tetrahedron **29° 39.833' N, 94° 58.919' W**
  - Mark #4 A large yellow tetrahedron **29° 38.839' N, 95° 00.114' W**

## **12. THE START**

- 12.1 The WL line:
- 12.1.1 The starting line will be between a staff displaying an orange flag on the race committee boat on the starboard end and an orange buoy on the port end.
- 12.1.2 The starting sequence will be signaled according to RRS 26.
- 12.2 The PHRF line:

- 12.2.1 The starting line will be between a staff displaying an orange flag on the race committee signal boat at the starboard end and the course side of a mark or floating shape at the port end.
- 12.2.2 RRS 26 does not apply to the PHRF line. The starting sequence will be signaled according to attachment C of these Sl's.

### 13. RECALLS

#### 13.1 For the WL line:

- 13.1.1 Recalls will be signaled in accordance with RRS 29.

#### 13.2 For the PHRF line:

- 13.2.1 The Race Committee will attempt to hail boats over early as soon as possible after their designated start but is not required to do so. This is a courtesy.
- 13.2.2 Code flag "X" will be displayed for a short period of time, and such length of time shall be at the discretion of the Race Committee, for the PHRF. The length of time that code flag X is displayed will not be grounds for redress. This changes RRS 29.1.

### 14. THE FINISH

#### 14.1 For the WL line:

- 14.1.1 The finish line will be between a staff displaying an orange flag on a Race Committee boat and an orange ball.

#### 14.2 For the PHRF line:

- 14.2.1 The finish line will be between a staff displaying an orange flag on the race committee signal boat at the starboard end and the course side of a mark or floating shape at the port end.

### 15. TIME LIMITS

- 15.1 Both lines: Boats failing to finish within 30 minutes (the finishing window) after the first boat finishes for all lines shall be scored Time Limit Expired (TLE) which is equal to the number of finishing boats plus 2. This changes RRS 35, A4, A5 and A11.

#### 15.2 For the PHRF line:

- 15.2.1 Unless posted on the HYC Race Information Board, **the pursuit time limit is 210 minutes from the preparatory signal.**
- 15.2.2 A boat that starts later than 10 minutes after her assigned starting time shall be scored DNS (Did not Start).

### 16. PENALTIES

- 16.1 Appendix T will apply. Arbitration will be held in person and the arbitrator may be part of the panel if the arbitration fails and it proceeds to a protest hearing.
- 16.2 The penalty for RRS 47, "Trash Disposal", shall be disqualification (DSQ) from that race.
- 16.3 For the PHRF line:
  - 16.3.1 The first two sentences of RRS 44.1 are changed to: "A boat may take a One-Turn Penalty when she may have broken a rule of Part 2 or rule 31 while *racing*. However, when she may have broken a rule of Part 2 while in the zone around a mark other than a starting mark, her penalty shall be a Two-Turns Penalty."

## **17. PROTESTS AND REQUESTS FOR REDRESS**

- 17.1 Intent to protest shall be signaled in accordance with RRS 61.1. The protesting boat shall also notify the Race Committee at the first reasonable opportunity and be acknowledged before leaving the finish area.
- 17.2 Protests shall be written on forms available at the office of the Houston Yacht Club and delivered there within thirty (30) minutes following the arrival of the corresponding Race Committee Boat into the harbor. These arrival times shall be posted on the "HYC Race Information" official notice board. This changes RRS Appendix S 13.2.
- 17.3 The times and locations of the protest hearings, along with the names of the boats involved will be posted on the "HYC Race Information" official notice board no later than thirty (30) minutes after the protest time.
- 17.4 Protests may be held via zoom. If so, a link will be sent no later than (30) minutes after the protest time limits. Each boat must have an electronic device capable of being able to participate in a zoom hearing.
- 17.5 To meet obligations under US Sailing prescriptions concerning redress, notification of a redress hearing shall be by posting on the official notice board for thirty (30) minutes. The requirement for written requests for attendance of the hearing will be satisfied by a signup sheet at the official protest table. No more than one person per boat may attend. No request for reopening a hearing will be accepted after 6 p.m. Saturday February 21, 2021. This changes RRS Appendix S 13.5 and RRS 62.2.

## **18. SCORING**

- 18.1 The "Low Point" scoring system shall be used as described in RRS appendix A.
- 18.2 One race shall be completed to constitute a regatta.
- 18.3 For the PHRF line, No scores shall be excluded. This changes RRS A2.
- 18.4 RRS A5.3 will apply.

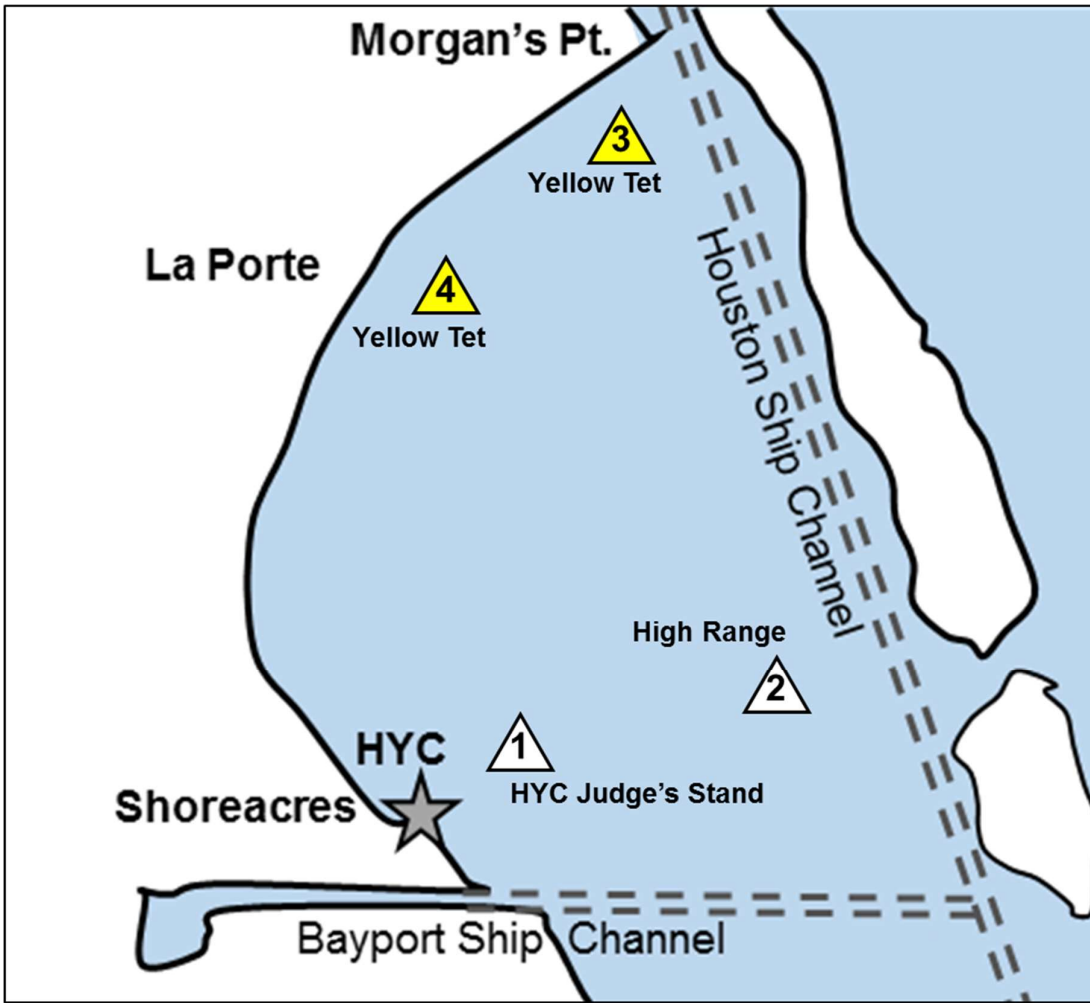
## **19. SAFETY**

- 19.1 Any boat that has checked in, and then withdraws before finishing the race, shall notify the Race Committee on the water or, if that is not possible, The Houston Yacht Club Office by telephone: **281-471-1255**, or **VHF Channel 68**. Failure to comply with this requirement may result in disqualification from the regatta.
- 19.2 **DISCLAIMER OF LIABILITY:** Competitors are reminded that they participate in this regatta at their own risk and that the decision to race is solely theirs, per RRS 3.

## **20. RADIO COMMUNICATIONS**

- 20.1 Except in an emergency that threatens the safety or life and/or property, a boat that is racing shall not make voice or data transmissions and shall not receive voice or data communication that is not available to all competitors.
- 20.2 For the WL line, Race Committee will attempt to monitor **VHF channel 68** and may use this channel to hail premature starts and abandoned races.
- 20.3 For the PHRF line, Race Committee will attempt to monitor **VHF channel 72** and may use this channel to hail premature starts and abandoned races.
- 20.4 For the PHRF line, The Race Committee will attempt to report visual signals displayed and other pertinent information over VHF channel 72. This information is provided as a courtesy to the competitors and does not in any way alter competitor's responsibility to observe the Race Committees visual signals which govern the conduct of race. Errors or omission involving such courtesy broadcasts shall not be grounds for redress.

Attachment A: Racing Area



## Attachment B: PHRF Courses

### Course #1

Mark 1 to Mark 4      Leave on Port  
Mark 4 to Mark 1      Leave on Port  
Mark 1 to Mark 2      Leave on Port  
Mark 2 to Mark 1      Leave on Starboard  
Mark 1 to Mark 4      Leave on Port  
Mark 4 to Mark 1      Finish for a total of 8.8 miles

### Course #2

Mark 1 to Mark 2      Leave on Port  
Mark 2 to Mark 1      Leave on Starboard  
Mark 1 to Mark 4      Leave on Starboard  
Mark 4 to Mark 3      Leave on Port  
Mark 3 to Mark 4      Leave on Port  
Mark 4 to Mark 1      Finish for a total of 8.6 miles

### Course #3

Mark 1 to Mark 2      Leave on Port  
Mark 2 to Mark 3      Leave on Port  
Mark 3 to Mark 4      Leave on Port  
Mark 4 to Mark 1      Finish for a total of 6.4 miles

### Course #4

Mark 1 to Mark 3      Leave on Port  
Mark 3 to Mark 4      Leave on Port  
Mark 4 to Mark 2      Leave on Port  
Mark 2 to Mark 3      Leave on Port  
Mark 3 to Mark 1      Finish for a total of 10.5 miles

**Attachment C: PHRF Start Sequence**

Races shall be started by using the following signals. Times shall be taken from the visual signals; the absence of a sound signal shall be discarded.

<i>Minutes after warning signal</i>	<i>Visual signal</i>	<i>Sound signal</i>	<i>Means</i>
0	Class flag	One	Warning signal
1	P flag	One	Preparatory signal
Based upon start time table in Appendix C	None	None	Starting signal
Upon race committee's discretion	P flag and class flag removed	None	Any boats which have not started shall be scored DNS

**START TIME OFFSETS FOR COURSE: 1 - 8.8 NM**

FLEET	BOATNAME	SAIL_NUMBER	MODEL	HANDICAP OFFSET IN HH:MM:SS			
				Spin rating	Offset	Non-Spin rating	Offset
Pursuit Spin	Potential entrant	NA	J/22	174	0:07:20	182	0:06:09
Pursuit Spin	Potential entrant	NA	J/24	171	0:07:46	183	0:06:00
Pursuit Spin	Endless Summer	37447	Ranger 33	162	0:09:05	177	0:06:53
Pursuit Spin	Funky	23	J27	126	0:14:22	133	0:13:20
Pursuit Spin	Water Nymph III	US 51	Melges 24	96	0:18:46	97	0:18:37
Pursuit Spin	Picante	25527	Beneteau First 36.7	81	0:20:58	98	0:18:28
Pursuit Spin	Outrageous 2	12039	J/120	48	0:25:48	57	0:24:29
Multihulls	Team America 142	28	Pulse 600	27	0:28:53	NA	
Multihulls	Try Me	148	F-31R	-24	0:36:22	NA	

**START TIME OFFSETS FOR COURSE: 2 - 8.6 NM**

FLEET	BOATNAME	SAIL_NUMBER	MODEL	HANDICAP OFFSET IN HH:MM:SS			
				Spin rating	Offset	Non-Spin rating	Offset
Pursuit Spin	Potential entrant	NA	J/22	174	0:07:10	182	0:06:01
Pursuit Spin	Potential entrant	NA	J/24	171	0:07:35	183	0:05:52
Pursuit Spin	Endless Summer	37447	Ranger 33	162	0:08:53	177	0:06:44
Pursuit Spin	Funky	23	J27	126	0:14:02	133	0:13:02
Pursuit Spin	Water Nymph III	US 51	Melges 24	96	0:18:20	97	0:18:12
Pursuit Spin	Picante	25527	Beneteau First 36.7	81	0:20:29	98	0:18:03
Pursuit Spin	Outrageous 2	12039	J/120	48	0:25:13	57	0:23:56
Multihulls	Team America 142	28	Pulse 600	27	0:28:14	NA	
Multihulls	Try Me	148	F-31R	-24	0:35:32	NA	

**START TIME OFFSETS FOR COURSE: 3 - 6.4 NM**

FLEET	BOATNAME	SAIL_NUMBER	MODEL	HANDICAP OFFSET IN HH:MM:SS			
				Spin rating	Offset	Non-Spin rating	Offset
Pursuit Spin	Potential entrant	NA	J/22	174	0:05:20	182	0:04:28
Pursuit Spin	Potential entrant	NA	J/24	171	0:05:39	183	0:04:22
Pursuit Spin	Endless Summer	37447	Ranger 33	162	0:06:36	177	0:05:00
Pursuit Spin	Funky	23	J27	126	0:10:27	133	0:09:42
Pursuit Spin	Water Nymph III	US 51	Melges 24	96	0:13:39	97	0:13:32
Pursuit Spin	Picante	25527	Beneteau First 36.7	81	0:15:15	98	0:13:26
Pursuit Spin	Outrageous 2	12039	J/120	48	0:18:46	57	0:17:48
Multihulls	Team America 142	28	Pulse 600	27	0:21:00	NA	
Multihulls	Try Me	148	F-31R	-24	0:26:27	NA	

**START TIME OFFSETS FOR COURSE: 4 - 10.5 NM**

FLEET	BOATNAME	SAIL_NUMBER	MODEL	HANDICAP OFFSET IN HH:MM:SS			
				Spin rating	Offset	Non-Spin rating	Offset
Pursuit Spin	Potential entrant	NA	J/22	174	0:08:45	182	0:07:21
Pursuit Spin	Potential entrant	NA	J/24	171	0:09:16	183	0:07:10
Pursuit Spin	Endless Summer	37447	Ranger 33	162	0:10:51	177	0:08:13
Pursuit Spin	Funky	23	J27	126	0:17:09	133	0:15:55
Pursuit Spin	Water Nymph III	US 51	Melges 24	96	0:22:24	97	0:22:13
Pursuit Spin	Picante	25527	Beneteau First 36.7	81	0:25:01	98	0:22:03
Pursuit Spin	Outrageous 2	12039	J/120	48	0:30:48	57	0:29:13
Multihulls	Team America 142	28	Pulse 600	27	0:34:28	NA	
Multihulls	Try Me	148	F-31R	-24	0:43:24	NA	