



Lakewood Yacht Club &
Bay Access Sailing Foundation
Present the Bay Cup Series & the

Saturday,
March 6, 2021

Introducing
Boqueron
CARIBBEAN RUM



Virtual Skippers' Meeting
Friday, March 5, 2021, 7:30 PM

Live Music with *Kelly McGuire*
and Home-style Buffet on Saturday Evening
Skippers: One meal and 2 drink tickets
included with registration

Register at www.lakewoodyachtclub.com
Registration Fee: \$75

Sailing Instructions Published March 3, 2021 at 2100

The notation '[NP]' in a rule of the sailing instructions (SIs) means that a boat may not protest another boat for breaking that rule. This changes RRS 60.1(a).

1 RULES

- 1.1 The event is governed by the rules as defined in *The Racing Rules of Sailing*.
- 1.2 In addition to rules changes in the Notice of Race, RRS 43, 61.1, 62.2, 64.2, A4 and A5 will be changed as follows:
 - 1.2.1 The penalty for violating RRS 31 by touching an anchored race committee vessel shall be to retire, and no exoneration is available. Touching a float and its line trailing from an anchored race committee vessel is not touching an anchored race committee vessel. This changes RRS 43 and 64.2.
 - 1.2.2 The penalty for violating a rule of Part 2 with the result that another boat touches an anchored race committee vessel shall be for the offending boat to retire. Touching a float and its line trailing from an anchored race committee vessel is not touching an anchored race committee vessel. This changes RRS 43 and 64.2.



- 1.2.3 If the race committee posts a list of boats scored OCS, ZFP, UFD or BFD on the official notice board before the protest time limit, a request for redress based on such a posted score shall be made no later than 30 minutes after the protest time limit. This changes RRS 62.2.
- 1.2.4 In addition to the requirements of RRS 61.1(a), a boat intending to protest another boat or to request redress shall notify the race committee as soon as possible either a) by radio using the appropriate VHF channel; or b) by sailing past the race committee signal vessel and hailing their intent. The protesting boat shall identify the other boat and receive acknowledgment from the race committee. This changes RRS 61.1.

1.3 Additional Rules

- 1.3.1. Boats in the Classic Canvas Class may only use sails made of woven polyester such as Dacron.
- 1.3.2. Two headsails shall not be carried at the same time, except while changing headsails, the replacing sail may be set and trimmed before the replaced sail is lowered.
- 1.3.3. A pole may be used to wing out a headsail, the luff of which shall be attached to a headstay. A whisker pole or spinnaker pole shall not be used to wing out an asymmetrical spinnaker.

2 CHANGES TO SAILING INSTRUCTIONS

- 2.1 Any change to the sailing instructions will be posted before 0900 on the day it will take effect, except that any change to the schedule of races will be posted by 2100 on the day before it will take effect.
- 2.2 Changes to a sailing instruction may be made on the water by hail on the appropriate VHF channel in accordance with RRS 90.2(c).

3 COMMUNICATIONS WITH COMPETITORS

- 3.1 Notices to competitors will be posted on or near the main clubhouse glass foyer entry door facing South located near the pool at Lakewood Yacht Club.
- 3.2 n/a.
- 3.3 On the water, the race committee intends to monitor and communicate with competitors via VHF radio on channel 69.



3.5 [DP] While racing, except in an emergency, a boat shall not make voice or data transmissions and shall not receive voice or data communication that is not available to all boats.

4 CODE OF CONDUCT

4.1 [DP] Competitors and support persons shall comply with reasonable requests from race officials.

4.2 n/a

5 SIGNALS MADE ASHORE

5.1 Signals made ashore will be displayed on the yardarm at Lakewood Yacht Club near the main clubhouse.

5.2 When flag AP is displayed ashore, '1 minute' is replaced with 'not less than 60 minutes' in Race Signals AP.

5.3 n/a

6 SCHEDULE OF RACES

6.1 Date of racing: March 6, 2021.

6.2 Number of races: One or two races will be held.

6.3 The scheduled time of the warning signal for the first race is 1030.

6.4 n/a

6.5 No warning signal will be made after 1500.

7 CLASS FLAGS

7.1 Class flags will be:

<u>Class</u>	<u>Flag</u>
Cruising Classic Canvas Non-Spin	Green
PHRF Non-Spin	Yellow
Cruising Classic Canvas Spin	Pink
J/105	J/105
ORC	Purple



8 RACING AREA

8.1. Attachment A shows the location of the racing areas.

8.2. Boats shall not enter or cross the Houston Ship Channel while racing.

8.3. If the designated course crosses the Bayport Channel, then boats shall not at any time interfere with commercial vessels operating in the Bayport Channel. Otherwise, boats shall not enter or cross the Bayport Ship Channel while racing.

9 COURSES

9.1 The diagrams in SI Attachment A show the courses, including the approximate angles between legs, the order in which marks are to be passed, and the side on which each mark is to be left.

9.2 No later than the warning signal, the race committee signal vessel will display a numeral pennant for the course to be sailed for that start. The Race Committee may, at its discretion, set different courses for different classes.

9.3 n/a.

9.4 n/a.

10 MARKS

10.1 Marks for Courses will be fixed and dropped marks on Galveston Bay in the following approximate positions:

Mark	Approximate Coordinate	Description
SF (Start/Finish)	N 29° 32.7' W 094° 59.1'	RC Signal boat and a nearby orange mark (buoy or tetrahedron) NOTE: For Courses 5 and 6, an orange mark nearby is the turning mark "SF" except when starting or finishing.
E	N 29° 35.8' W 094° 56.9'	The Low Range Marker (Upper Range "A") in Galveston Bay. The mark is an orange and white structure near Houston Ship
G	N 29° 34.6' W 094° 56.5'	Morgan's Point Approach Outer Range Rear Light
H	N 29° 33.3' W 094° 56.5'	A platform located in Galveston bay, approximately 1.3 nm WSW of
South Boaters	N 29° 32.4'	A channel marker in Galveston bay, near the Houston Ship Channel
Todville Rd beach Tet	N 29° 34.5' W 094° 59.3'	An anchored 8' Orange Tetrahedron



San Leon beach Tet	N 29° 30.6 W 094° 56.1'	<i>An anchored 8' Orange Tetrahedron</i>
Upper Galveston Bay Tet	N 29° 39.2' W 094° 59.8'	<i>An anchored 8' Orange Tetrahedron</i>

10.2 n/a.

10.3 The starting and finishing marks will be the race committee signal vessel (including its trailing float and line) and an orange mark.

11 OBSTRUCTIONS

11.1 None. However, See SI 8.2 and 8.3.

12 THE START

12.1 n/a.

12.2 n/a.

12.3 The starting line is between a staff displaying an orange flag on the signal vessel at the starboard end and the course side of the port-end starting mark.

12.4 Boats whose warning signal has not been made shall avoid the starting area during the starting sequence for other races. [DP]

12.5 n/a.

12.6 If any part of a boat's hull is on the course side of the starting line at her starting signal and she is identified, the race committee will attempt to broadcast her sail number on the appropriate VHF channel. Failure to hail her number, failure of her to hear such a hail, or the order in which boats are hailed will not be grounds for a request for redress. This changes RRS 62.1(a).

12.7 A boat that does not start within 10 minutes after her starting signal will be scored Did Not Start without a hearing. This changes RRS A5.1 and A5.2. [DP]

13 CHANGE OF THE NEXT LEG OF THE COURSE

13.1 n/a

14 THE FINISH

14.1 The finishing line is between a staff displaying a blue flag on the finishing mark at the starboard end and the course side of the port end finishing mark.

14.2 If the race committee is absent when a boat finishes, she should report her finishing time, and her position in relation to nearby boats, to the race committee at the first reasonable opportunity.



15 PENALTY SYSTEM

15.1 Appendix V2 will apply.

16 TIME LIMITS

16.1 See NOR 1.2.

17 HEARING REQUESTS

17.1 For each class, the protest time limit is 60 minutes after the race committee signal vessel enters the Lakewood Inner Harbor. The time will be posted on the official notice board.

17.2 Hearing request forms are available from the LYC Clubhouse Office. Protests and requests for redress or reopening shall be delivered there within the appropriate time limit. Protestors and Protestees are requested to promptly go to the LYC Clubhouse Office to either wait for resolution or leave a reliable contact number.

17.3 Notices will be posted no later than 30 minutes after the protest time limit to inform competitors of hearings in which they are parties or named as witnesses. Hearings will be held in the protest room, the location of which will be identified on the official notice board, beginning at the time posted.

17.4 In the event of a Protest or Redress hearing, one or more members of the protest panel may be on a remote connection such as phone or videoconference.

17.5 n/a

17.6 n/a

18 SCORING

18.1 See NOR 1.2.

18.2 One race is required to be completed to constitute a series for Bay Cup I and for the Bay Cup series trophy.

18.3 A boat's series score is the total of her race scores. For the Bay Cup series trophy, a boat's score is the total of her race scores in both the 2021 Bay Cup I and Bay Cup II regattas.

18.4 All handicap classes will be scored using Time on Time (TOT) scoring.

18.5 ORC Class(es) will be scored using Triple Number All Purpose. The Race Committee intends to announce its selection after the first ORC boat has finished, based on prevailing conditions as measured at the signal vessel during the course of the race. The Race Committee's selection shall not be subject to redress. This changes RRS 62.1(a).



18.5 To qualify for the Bay Cup series trophy, a boat must compete in the same class during both the 2021 Bay Cup I and Bay Cup II regattas and must be sailed by the same skipper.

19 SAFETY REGULATIONS

19.1 Before the first warning signal of the first race, a boat shall check in with the race committee on the water by sailing past the stern of the anchored race committee signal vessel on starboard tack and hailing the boat's name or sail number, until acknowledged by the race committee. Boats shall not check in by VHF radio. At each boat's check-in, every person on board shall be visible on deck wearing or holding a personal floatation device (PFD). [DP][NP]

19.2 [DP] A boat that retires from a race shall notify the race committee at the first reasonable opportunity by one of the following means: a) by radio using the appropriate VHF channel; b) by sailing pas a race committee vessel and announcing retirement and receiving acknowledgment; c) by calling the PRO (832) 993-5933.

20 REPLACEMENT OF CREW OR EQUIPMENT

n/a.

21 EQUIPMENT AND MEASUREMENT CHECKS

n/a

22 SUPPLIED BOATS

n/a

23 OFFICIAL VESSELS

23.1 Official vessels may be identified by displaying a blue race committee flag with a fouled anchor.

24 SUPPORT TEAMS

n/a

25 TRASH DISPOSAL

n/a

26 BERTHING

n/a



27 HAUL-OUT RESTRICTIONS

n/a

28 DIVING EQUIPMENT AND PLASTIC POOLS

n/a

29 PRIZES

Prizes will be given as follows:

29.1. See NOR 19.

29.2. Prizes will be awarded during the post-race party Saturday evening.

30 RISK STATEMENT

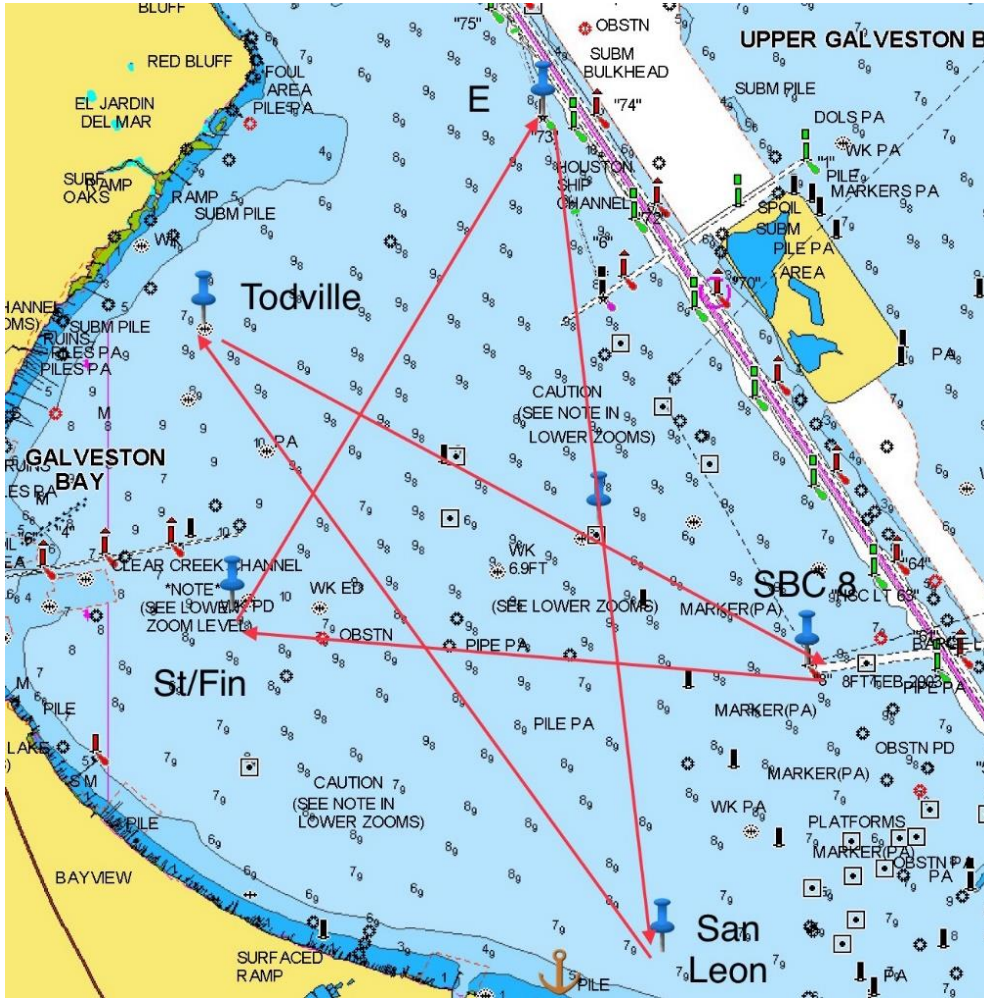
30.1 RRS 3 states: 'The responsibility for a boat's decision to participate in a race or to continue to race is hers alone.' By participating in this event each competitor agrees and acknowledges that sailing is a potentially dangerous activity with inherent risks. These risks include strong winds and rough seas, sudden changes in weather, failure of equipment, boat handling errors, poor seamanship by other boats, loss of balance on an unstable platform and fatigue resulting in increased risk of injury. **Inherent in the sport of sailing is the risk of permanent, catastrophic injury or death by drowning, trauma, hypothermia or other causes.**

31 INSURANCE

31.1 See NOR 21.



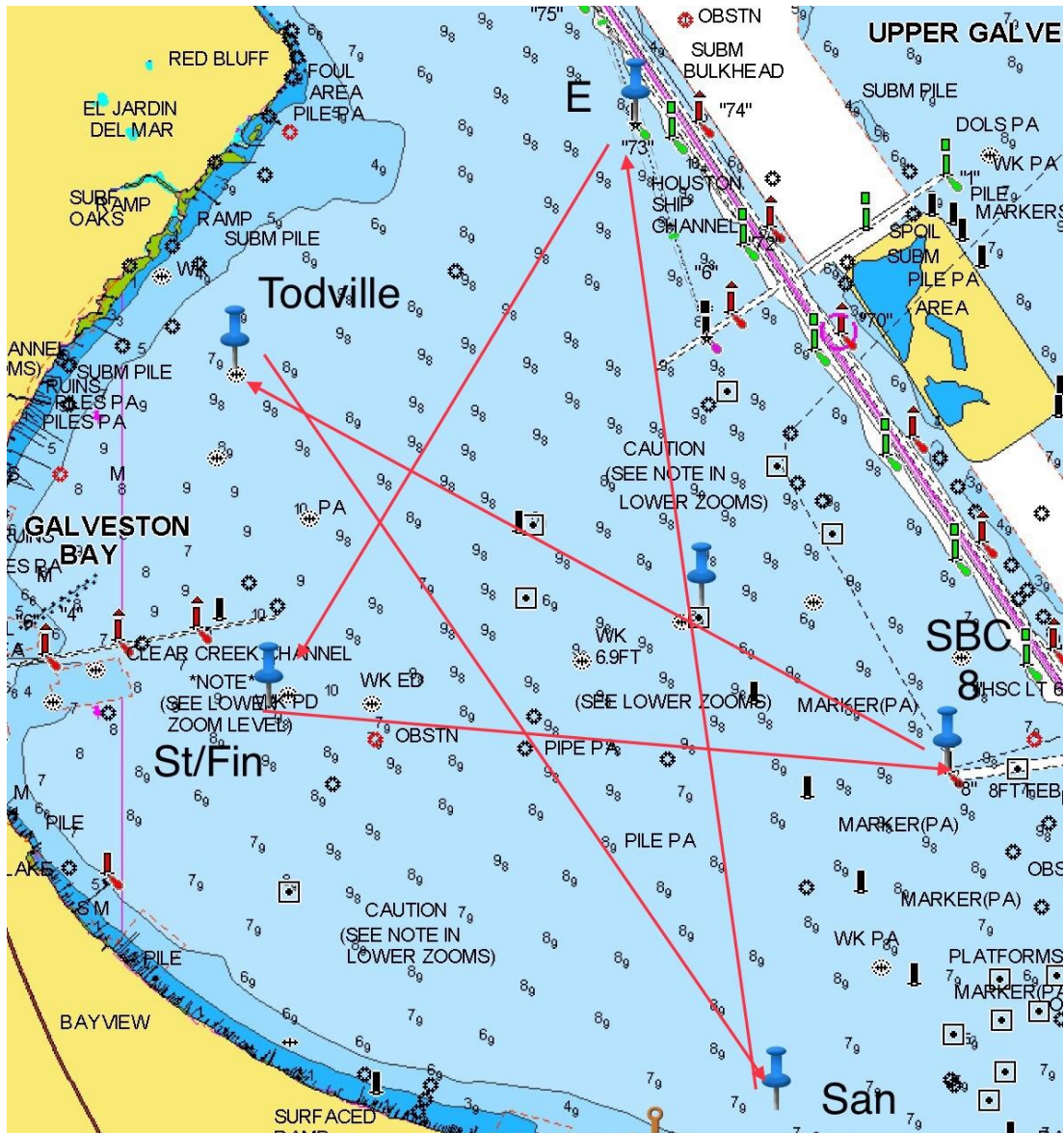
2021 Bay Cup I Sailing Instructions ATTACHMENT A: COURSES Course 1



	Mark	Approx. Brg.	Leave to:
Start	Start		
1	E	32*	Stbd
2	San Leon	172*	Stbd
3	Todville	324*	Stbd
4	SBC 8	119*	Stbd
Finish	Finish	275*	



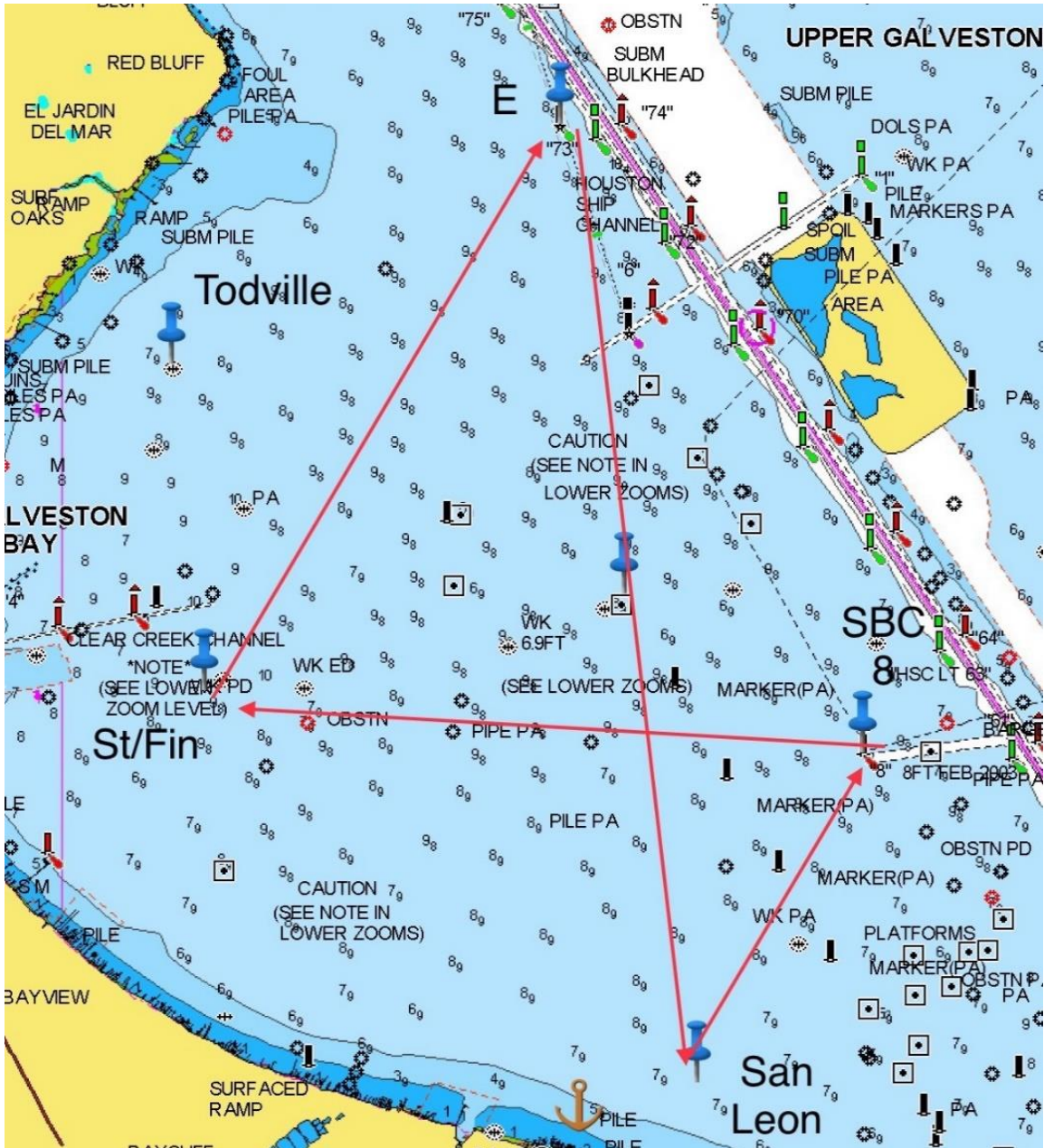
Course 2



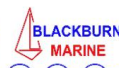
	Mark	Approx. Brg.	Leave to:
Start	Start		
1	SBC 8	95*	Port
2	Todville	299*	Port
3	San Leon	144*	Port
4	E	352*	Port
Finish	Finish	212*	



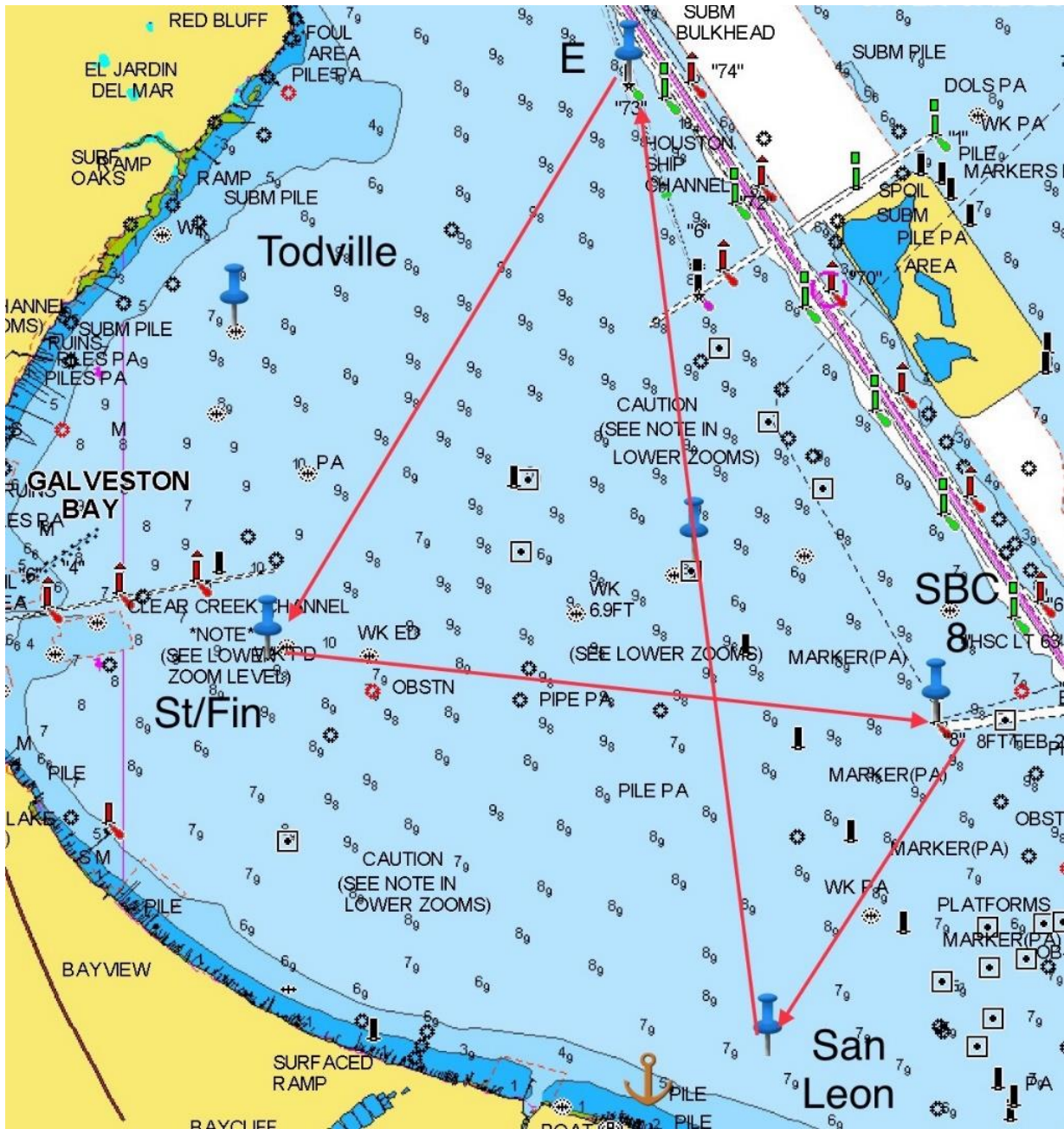
Course 3



	Mark	Approx. Brg.	Leave to:
Start	Start		
1	E	32*	Stbd
2	San Leon	172*	Port
3	SBC 8	26*	Port
Finish	Finish	275*	



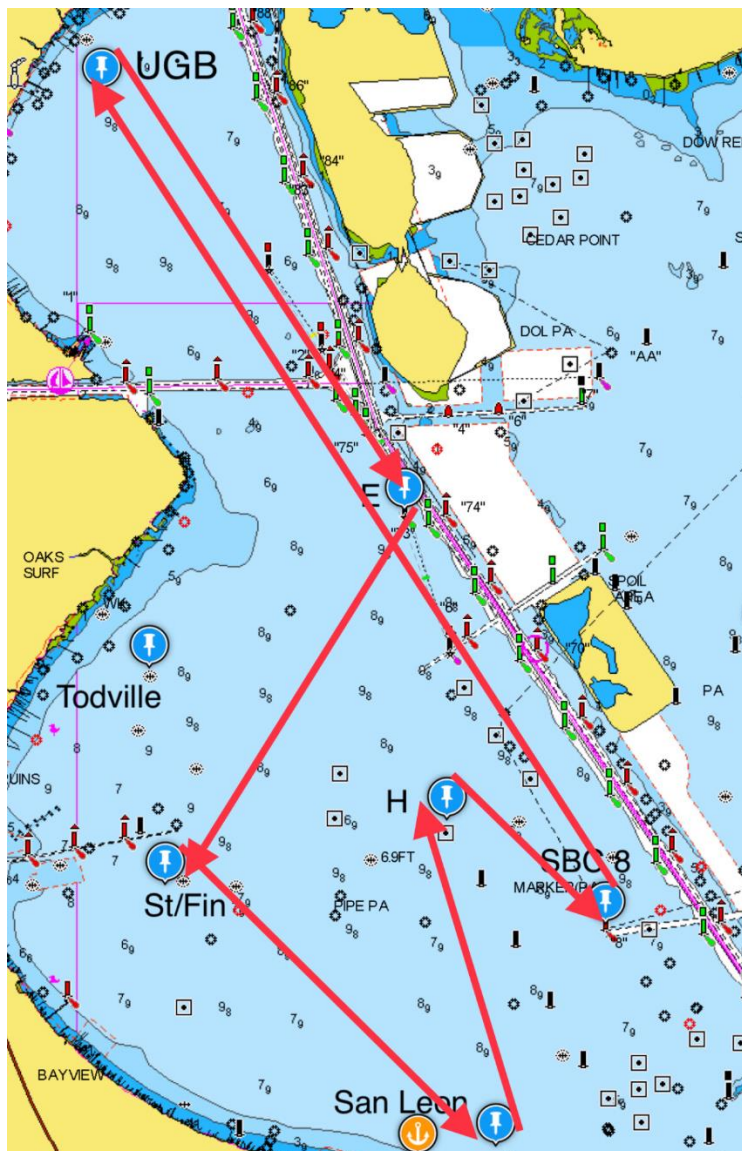
Course 4



	Mark	Approx. Brg.	Leave to:
Start	Start		
1	SBC 8	95*	Stbd
2	San Leon	208*	Stbd
3	E	352*	Port
Finish	Finish	212*	

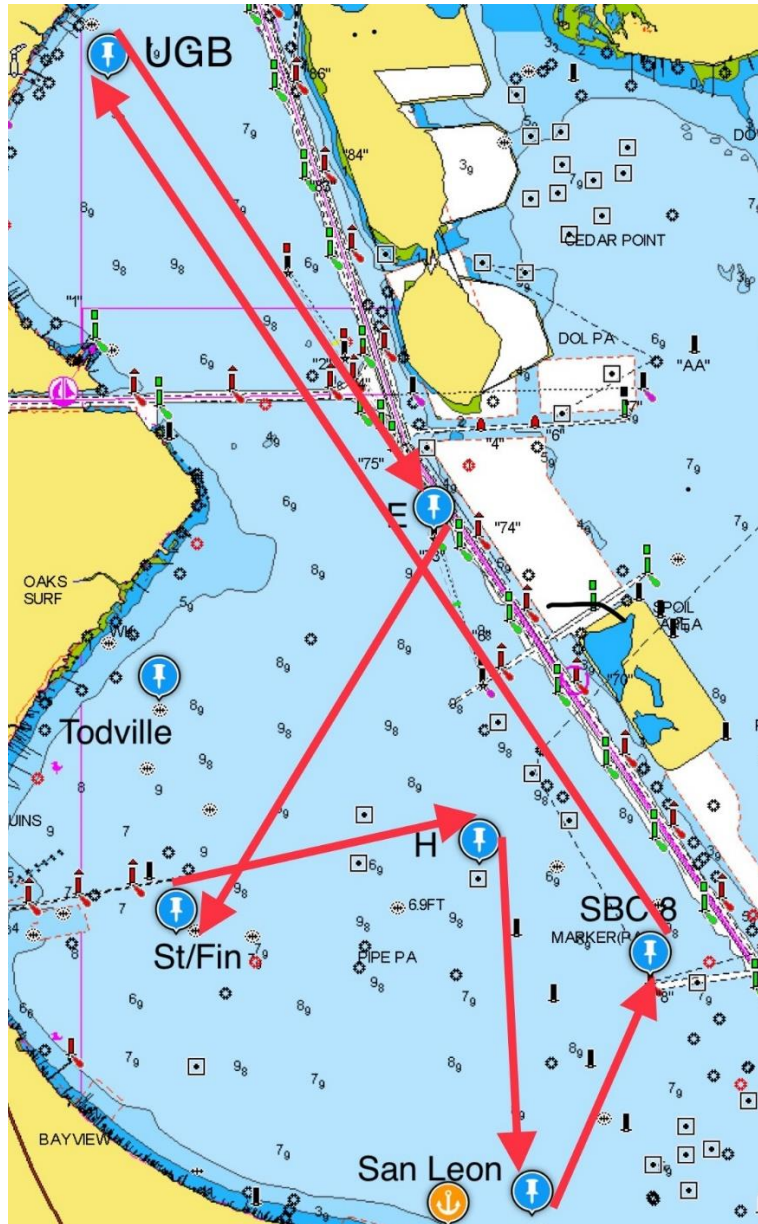


Course 5



	Mark	Approx. Brg.	Leave to:
Start	Start		
1	San Leon	129*	Port
2	H	352*	Stbd
3	SBC 8	123*	Port
4	UGB	329*	Stbd
5	E	144*	Stbd
Finish	Finish	213*	

Course 6



	Mark	Approx. Brg.	Leave to:
Start	Start		
1	H	77*	Stbd
2	San Leon	172*	Port
3	SBC 8	26*	Port
4	UGB	329*	Stbd
5	E	144*	Stbd
Finish	Finish	213*	

