



RS Aero Intensity Sail Distance Challenge



February 2, 2021

US SAILING Center • Martin County
Jensen Beach, Florida

SAILING INSTRUCTIONS

1. Rules:

- 1.1. The regatta will be governed by the rules as defined in The Racing Rules of Sailing including Appendix T and the rules of the RS Aero Class Association.
- 1.2. By participating in this regatta, a competitor grants to the Organizing Authority and its sponsors the right in perpetuity to make, use and show, from time to time at their discretion, any photographs, motion pictures and live, taped, or filmed television and other reproductions of him or her during the period of the competition without compensation.
- 1.3. RRS 42.3 is changed by adding: "Where stipulated in the SI, if the average wind speed is clearly over 10 knots across the course the race committee may signal in accordance with RRS Appendix P5 that pumping, rocking and ooching are permitted except prior to the start" This changes RRS 42.2 a, b and c.

2. Entry and Eligibility:

- 2.1. The regatta is open to all boats of the RS Aero class.
- 2.2. Eligible crews may be entered by completing entry form, registering with the organizing authority and paying the entry fee.

3. Notices to Competitors:

- 3.1. All notices to competitors will be posted on the Official Notice Board will be online through Regatta Network <https://www.regattanetwork.com/event/21818> . Each competitor has the responsibility to check this Board for information pertaining to the race.

4. Changes In Sailing Instructions

- 4.1. Any change in the Sailing Instructions made on Tuesday, 2 February will be posted no later than at the end of the Competitor's Meeting.
- 4.2. Changes to the schedule of races will be posted by 1800 on the day before the change is to take effect.

5. Signals Made Ashore:

- 5.1. Signals made ashore shall be displayed on a pole on the end of the Center dock. When AP is displayed ashore, "1 minute" is replaced by "not less than 30 minutes" in Race Signals AP.

6. Sailing Area

- 6.1. Racing will take place on the Indian River east of the Sailing Center.

7. Competitors' Meeting

- 7.1. The competitors' meeting will be held at 1130 on Tuesday, 2 February 2021 from PA system with all in the yard.

8. Schedule of Events

8.1	Tuesday 2 February	1130	Competitors' Meeting (this schedule changes the time in the NOR)
		1200	First Warning Signal

9. Courses:

- 9.1. The course to be sailed will be determined by weather conditions at the time of a race. A laminated course diagram will be provided to each competitor at the competitors' meeting.

10. Marks:

All marks shall be as described on the course diagram.

11. The Start:

- 11.1. Races will be started using Appendix U. The starting line shall be between the staff from which an orange flag is displayed on the Race Committee signal boat at the starboard end and the course side of the starting mark at the port end.

12. The Finish:

- 12.1. The finish line shall be between the staff from which an orange flag is displayed on a Race Committee boat or the Sailing Center Floating Dock and a finishing mark.
- 12.2. The finishing boat will sound a horn for first boat finishing. No sound signals will be made for subsequent finishes.

13. Time Limits:

- 13.1. There will be no time limits for this race.

14. Protests:

- 14.1. Any boat intending to protest must inform the Race Committee signal boat immediately following the race in which the infraction occurred.
- 14.2. Appendix T will apply to all protests by a boat involving one or more rules of Part 2 or Rule 31.

15. Scoring:

- 15.1. The Low Point Scoring System (Appendix A) shall be used.
- 15.2. All boats will be started together regardless of their rig sizes (5, 7, and 9). US Sailing Portsmouth Handicap scoring will be in effect.
- 15.3. The number of races scheduled is ONE.

16. Safety and other Items.

- 16.1. All competitors shall wear U.S. Coast Guard approved life jackets, or a life jacket approved by the country of their citizenship or residence, at all times while on the water. Failure to do so is protestable only by the Race Committee and may result in disqualification.
- 16.2. Before the first warning signal of the day, each boat shall sail past the stern of the race committee signal boat and hail her sail number, which will be acknowledged.
- 16.3. A competitor who withdraws from the race or intends not to start shall inform the nearest safety or race committee boat as soon as possible.
- 16.4. Boats may touch a mark other than a starting or finishing mark. A boat shall not manhandle a mark when it results in an advantage. This changes RRS 31.

17. Prizes:

- 17.1. Recognition will be given to the top three boats overall.

18. Coach and support Boats:

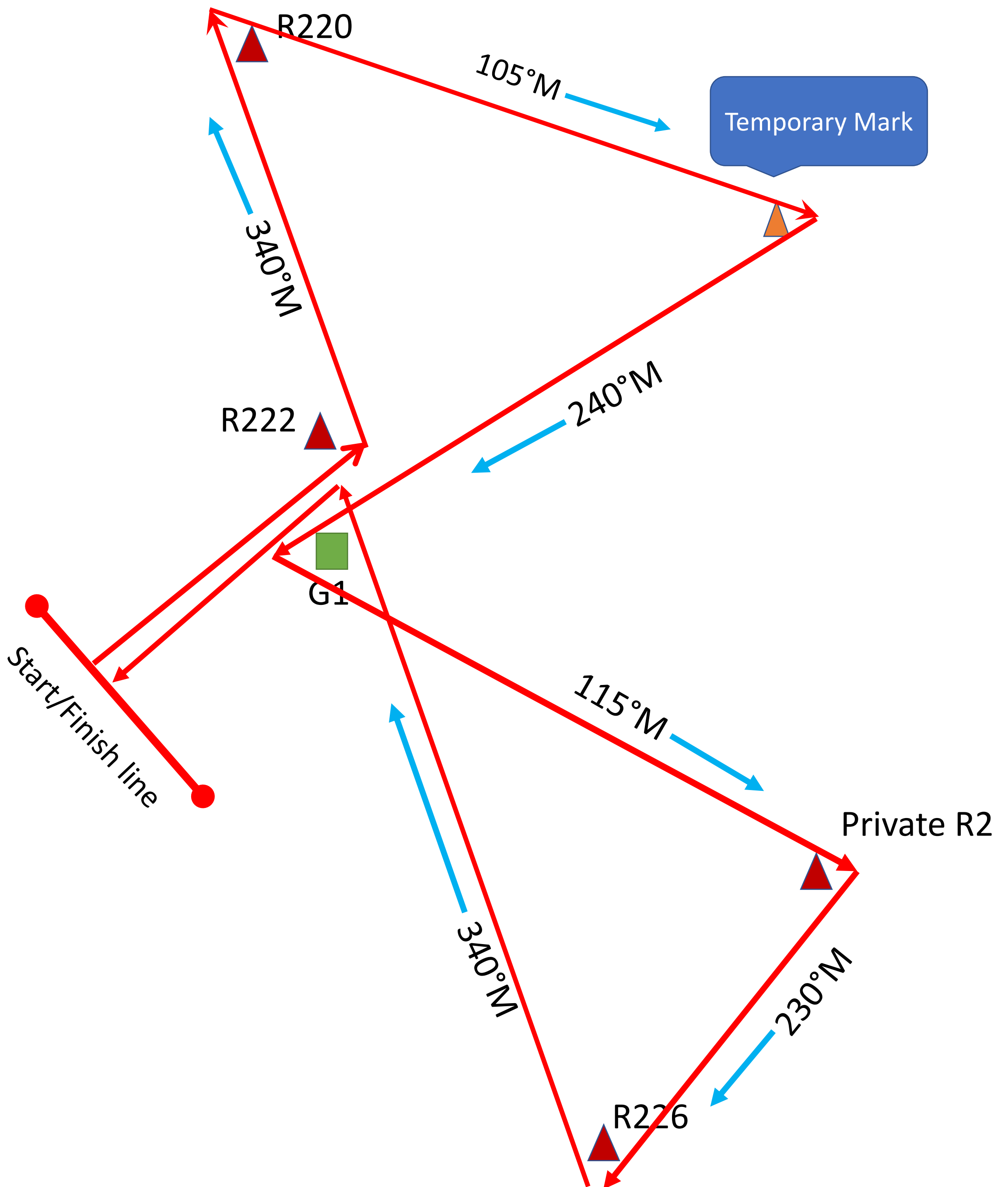
- 18.1. All coach and support boats shall register and prominently fly a designated flag from a staff at all times while on the water.
- 18.2. Flags will be available at the south end of the check-in room. A security deposit will be required and returned to you at the end of the event with the return of your flag.

19. Disclaimer of Liability:

- 19.1. Competitors participate in the regatta entirely at their own risk. See RRS 4, Decision to Race. The organizing authority will not accept any liability for material damage or personal injury or death sustained in conjunction with or prior to, during or after the regatta.

RS Aero Midwinter distance racecourse

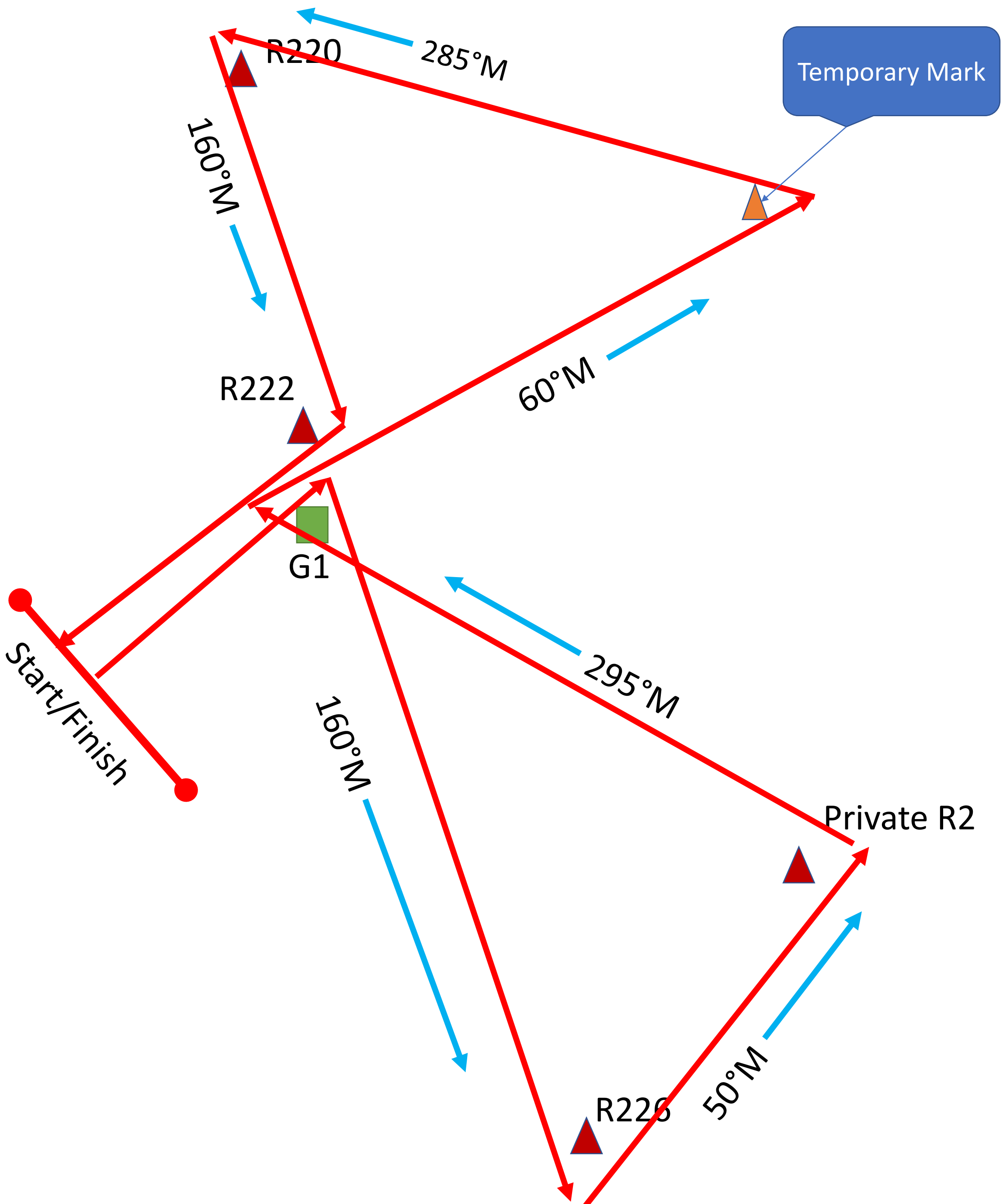
Clockwise



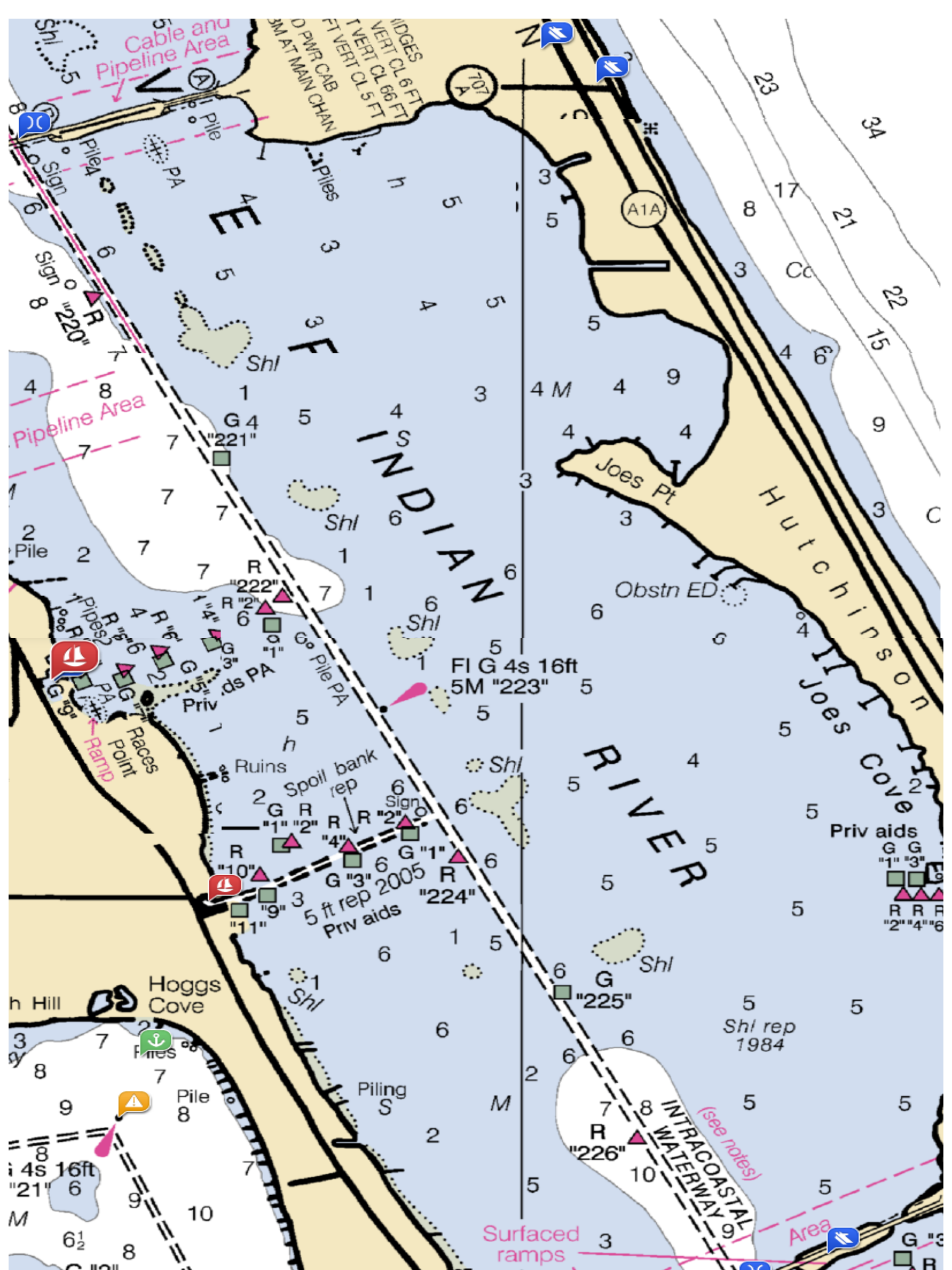
Course Start- R222-R220-T-G1-private R2-R226-G1-Finish

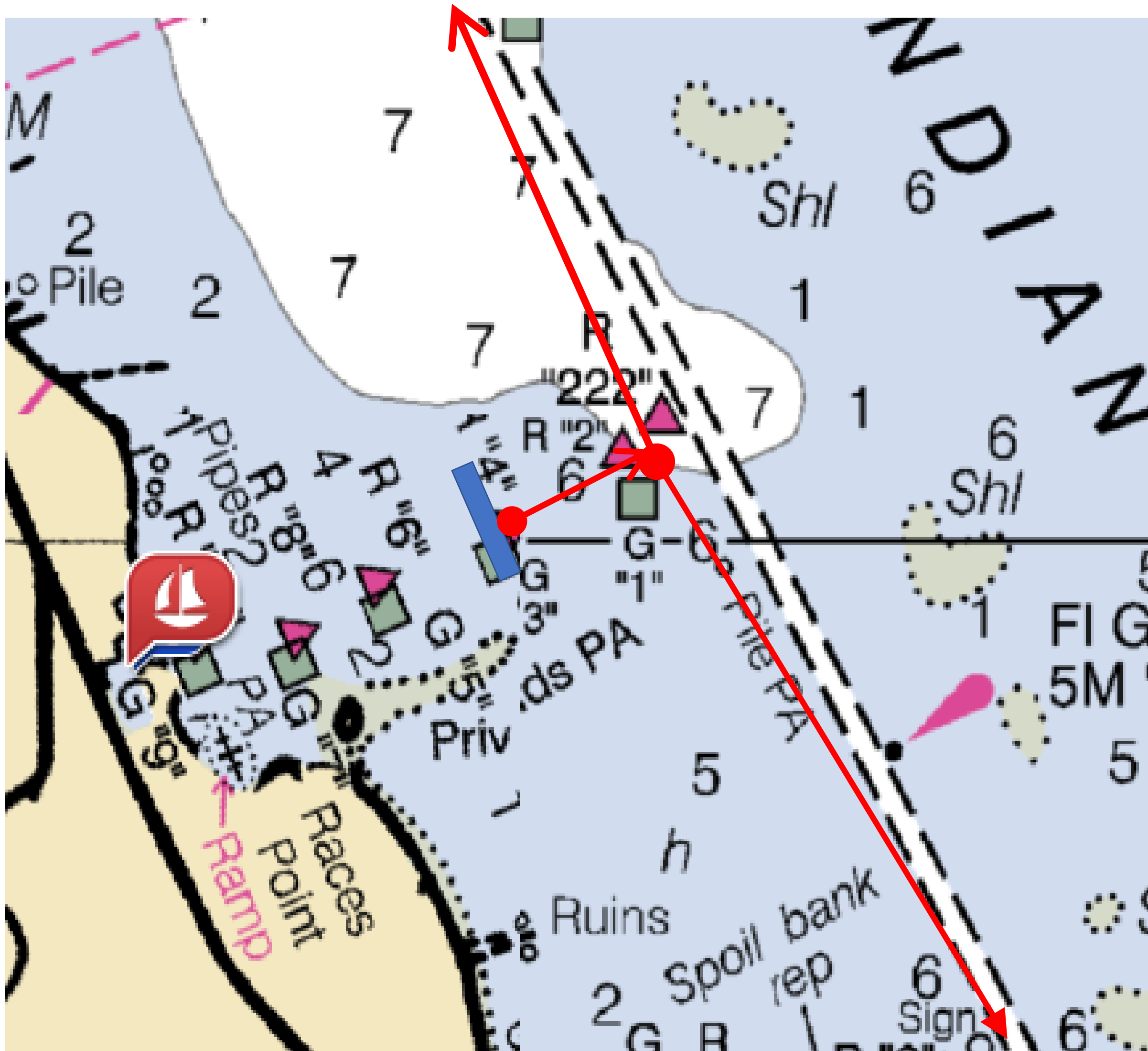
RS Aero Midwinter distance racecourse

Counterclockwise



Counterclockwise course S-G1-R226-Private R2-G1-T-R220-R2-F





- Clockwise course First, R222 & last marks to Port all other marks to Starboard.
- Clockwise course S- R2-R220-T-R222-private R2-R226-G1-F
- Counterclockwise course First, R222 and last marks to Starboard other marks to port
- Counterclockwise course S-G1-R226-Private R2-R222-T-R220-R2-F