



2021 BUZZARDS BAY REGATTA SAILING INSTRUCTIONS

Racing: August 6, 7 & 8, 2021

Organizing Authority (OA): New Bedford Yacht Club Regatta Association

Regatta Headquarters & Hosts: New Bedford Yacht Club (NBYC), South Dartmouth, MA

Racing Venue: Buzzards Bay

The notation [NP] in a rule of the sailing instructions (SIs) means that a boat may not protest another boat for breaking that rule. This changes RRS 60.1(a).

1.0 Rules

1.1 The regatta will be governed by the *rules* as defined in the current *Racing Rules of Sailing (RRS)*.

1.2 The PHRF and NEMA Multihull classes will be required to comply with the current *US Sailing Safety Equipment Requirements for Near Shore Racing* except lifelines as described in US SER for Coastal Racing paragraphs 2.4.1 to 2.7.2 are required.

1.3 No weight limit will be enforced for PHRF classes. All PHRF boats will be required to comply with the following Reference Crew Numbers.

LOA (up to)	Crew Number		LOA (up to)	Crew Number
22.5	4		42.5	12
25	5		45	13
27.5	6		50	14
30	7		55	15
32.5	8		60	16
35	9		65	17
37.5	10		70	18

1.4 The following documents also govern the regatta: Supplement A to the Laser Sailing Instructions; Supplement B to the 505 Sailing Instructions; Supplement C to the PHRF and NEMA Multihull Sailing Instructions; Supplement D for the Dick Fontaine Memorial Distance Race; and Attachments 1-4.

1.5 RRS 52 is changed as follows: Powered winches will be allowed on all PHRF boats.

1.6 Boats that race before completing the entry procedures described in the Notice of Race will be scored "Did Not Compete" without a hearing for such races. This changes RRS 63.1, A4.1 and A5.

1.7 A boat racing with any sail number different from the number on her entry form (or sail number change form) will be scored "Did Not Compete" without a hearing. This changes RRS 63.1, A4.1, A5 and G4.

1.8 [DP]All boats except Lasers, and 505's are required to carry a VHF radio for use in emergencies.

1.9 [NP] The regatta will be run in accordance with Massachusetts COVID-19 Guidance

2.0 Notices to Competitors

2.1 The official notice board for all competitors will be posted at the tent located in front of the NBYC clubhouse

3.0 Changes to the Sailing Instructions

3.1 Any changes to the Sailing Instructions will be posted before 0830 on the day they will take effect, except that during a postponement ashore a change may be posted before the removal of the AP flag. Any change in the schedule of races will be posted by 1900 on the day before it takes effect.

4.0 Signals Made Ashore

4.1 Signals made ashore will be displayed from the NBYC flagpole.

4.2 When flag AP is displayed ashore, “1 minute” is replaced with “not less than 60 minutes” in Race Signal AP. This changes Race Signals.

5.0 Schedule of Races (Amends NOR 5)

Friday, August	0800 - 1000	On-site check-in at NBYC.
	1100	Warning Signal for the Dick Fontaine Memorial Race at NBYC
	1700 – 1900	Registration Open
Saturday, August 8	0730-0930	On-site check-in at NBYC
	1100	First Warning signal for PHRF and Multihull
	1100	Skippers Meeting Lasers
	1200	First Warning signal for Lasers and 505s
	1700 – 1900	Music and grilled food on the lawn.
Sunday, August 9	1100	First Warning signal for all classes
	1400	No Warning signal after this time.
	After Racing	Awards.

6.0 Racing Areas

6.1 Classes are assigned to racing areas defined below. See Attachment 1 for a chart illustrating the approximate locations for the NBYC fleets.

CIRCLE (VHF Channel)	CLASSES	APPROXIMATE CENTER OF CIRCLE	APPROXIMATE DISTANCE FROM BREAKWATER	APPROXIMATE BEARING FROM BREAKWATER
YELLOW (VHF 72)	PHRF RACE PHRF CRUISE NEMA MULTIHULL	41° 31.3118' N 070° 53.0427' W	4.0 nm	195°
ORANGE (VHF 69)	Laser Masters, 505s	41° 34.6612' N 070° 54.5334' W	2 nm	145°

7.0 Courses

7.1 For drop mark courses, no later than the warning signal, the race committee signal vessel will display the course designation, the approximate distance of the first leg and the approximate compass bearing of the first mark.

For example:

W4		CC3
1.2	or	1.2
235		235

7.2 The diagrams in Attachment 3 show the drop mark course configurations, including the approximate angles between legs, the order of rounding and the side on which they are to be rounded. Note that the diagrams illustrate starting and finishing lines that are separate from the rounding marks and include an offset mark at the windward mark.

- 7.3 The drop mark courses will be:
- W Windward/Leeward, posted with the number of full legs, e.g.,
 W4: Start – 1– 3– 1 – Finish (downwind)
 or W3: Start – 1– 3 – Finish (upwind)

 - WO Windward/Leeward with and offset, posted with the number of full legs, e.g.,
 WO4: Start – 1– offset - 3– 1 – offset - Finish (downwind)
 or WO3: Start – 1– offset - 3 – Finish (upwind)

 - WOG Windward/Leeward with an offset mark and a gate, posted with the number of full legs, e.g.
 W4: Start- 1 – offset - 3A/3B – 1 – offset - Finish (downwind)

 - CC Port Triangle and port triangle with windward/leeward option (leeward mark set to windward of signal boat),
 posted with full number of legs e.g.,
 CC3: Start – 1– 2 – Finish (at signal boat)
 CC5: Start – 1– 2 – 3 – 1 – Finish (at signal boat)

 - WMG Windward/Leeward, start and finish in the middle, posted with the number of full legs, e.g.,
 WMG5: Start – 1 – offset – 3A/3B– 1 – offset – 3A/3B – Finish (upwind in the middle)

- 7.4 If only one leeward mark is set, it shall be rounded to port.
- 7.5 **For NEMA multihulls, the W and WO courses with more than 2 legs will have the leeward mark placed approximately .5 miles downwind of the starting line. They shall not cross the starting line while sailing toward their leeward mark. For example, in a W4 course, they shall round the windward mark, then the farthest leeward mark, then the windward mark and finish at the finish line.**
- 7.6 PHRF and NEMA multihulls may also sail courses using permanent marks. In that case, the race committee will post the marks of the course in order and the side on which each is to be left [P(ort) or S(tarboard)] on a white board on the signal boat. The descriptions and locations of the permanent marks are in Attachment 4.

8.0 Marks

- 8.1 The drop marks for each racing area are described in Attachment 3.

9.0 The Start

- 9.1 [NP] Before racing each day, each boat shall check in by passing behind the signal boat and hailing her sail number until acknowledged by the race committee. PHRF boats and NEMA multihulls may also check in by hailing their race committee on VHF channel 72 and being acknowledged. A boat that fails to check in will receive a 20% scoring penalty as calculated in RRS 44.3 for each race in which a breach occurs, without a hearing. This changes RRS 63.1 and A5
- 9.2 For all Classes except 505s, the starting line will be between a staff displaying an orange flag on the RC boat and the course side of the starting mark. For the 505 Class the default starting line configuration will be a gate start. The alternate starting configuration will be a fixed line start. If the alternate starting configuration is to be used, the RC will display Code Flag “F” with one sound at least five minutes prior to the warning for that race. See Supplement “B” for more information.
- 9.3 [DP] Boats whose warning signal has not been made shall avoid the starting area during the starting sequence for other races.
- 9.4 A boat that does not start within 4 minutes after her starting signal will be scored "Did Not Start" without a hearing. This changes RRS 63.1, A4.1 and A5.
- 9.5 Class flags, time limits, and finishing windows (see SI 14) are defined below:

Circle	Class	Class Flag	Time Limit	Finishing Window
Yellow	PHRF Race 1	Numeral Pennant 1	120 minutes	45 minutes
	PHRF Race 2	Numeral Pennant 2	120 minutes	45 minutes
	PHRF Cruise 1	Numeral Pennant 3	120 minutes	45 minutes
	NEMA Multihull	Numeral Pennant 4	120 minutes	45 minutes
Orange	Laser Master	Class Insignia	90 minutes	20 minutes
	505	Class Insignia	90 minutes	20 minutes

Time limit and finishing window do not apply for the distance race. (See Attachment D Dick Fontaine Memorial Distance Race)

- 9.6 It is intended that classes will start the first race each day in the order shown above. For subsequent races, Class start sequences will start when their Class flag is raised.

10.0 Recalls

- 10.1 On the **Orange** racing areas, the race committee will attempt to hail OCS boats and boats subject to rule 29.1 after the starting signal.
- 10.2 On the Yellow racing area, the race committee will attempt to hail the sail numbers of OCS boats and boats subject to rule 29.1 after the starting signal. Such hails will be made on racing area's VHF channel. See 6.1.
- 10.3 The failure of a boat to hear the hail, the hail of some but not all OCS boats, and the untimely hail of some or all OCS boats shall not be grounds for granting redress. This changes RRS 62.1(a).

11.0 Change Of The Next Leg Of The Course

- 11.1 To change the position of the next mark, the race committee will lay a new mark as described in Attachment 3 (or move the finishing line) and remove the original mark as soon as practicable. When the windward mark is changed, there will not be an offset mark. When in a subsequent change a new mark is replaced, it will be replaced by an original mark. The race committee may make minor adjustments to the gate without signaling a change.

12.0 THE FINISH

- 12.1 The finish line will be between a staff displaying a blue flag on a race committee boat and the course side of the nearby mark. For drop mark courses, the finish mark will be located as described in the diagram in Attachment 2.

13.0 Penalties

- 13.1 For all classes, Appendix V of the RRS applies.
- 13.2 For all PHRF and NEMA Multihull classes: The Scoring Penalty, RRS 44.3, will apply for penalties taken at the time of the incident. The penalty will be 20%. However, when a boat has broken a rule of Part 2 while in the zone around a mark other than a starting mark, her penalty will be 30%. (Amends NOR 8)

14.0 Time Limits

- 14.1. The time limits are shown in 9.5.
- 14.2. The "finishing window" will open when the first boat that sails the course finishes. Boats still racing when the finishing window closes (see SI 9.5) will be scored "Time Limit Expired" without a hearing. See SI 16.3. This changes RRS 35, 63.1, A 4.2 and A5.
- 14.3. If one-design boats at the end of the fleet are delaying the start of another race, the race committee may terminate the race and score those boats in the places they would have finished if the finish order is clear.

15.0. Protests, Redress and Arbitration

- 15.1. Protests shall be delivered to the Protest Desk within 60 minutes after the circle's race committee finish boat docks. Protest time limits will be posted on the official notice board.
- 15.2. Protest forms will be available at the protest desks on the porch of the NBYC clubhouse
- 15.3. Notices will be posted no later than 20 minutes after the protest time limit for each circle to inform competitors of hearings in which they are parties or named as witnesses. Parties and witnesses should report to the protest desk.
- 15.4. Notices of protests by the race committee or protest committee will be posted to inform boats under RRS 61.1(b).
- 15.5. For all classes, Appendix T of the RRS applies.
- 15.6 If the race committee posts a list of boats scored NSC., OCS, ZFD, UFD, or BFD on the official notice board before the protest time limit for that circle, a request for redress based on such a posted score shall be made no later than one hour after the protest time limit. This changes RRS 62.2.

16.0 Scoring

- 16.1 One race shall be completed to constitute a series.
- 16.2 When fewer than five races have been completed, a boat's series score will be the total of her race scores. When five or more races have been completed, a boat's series score will be the total of her race scores excluding her worst score.
- 16.3 Time Limit Expired is defined as two places more than the number of boats who properly sailed the course and finished in the finishing window.
- 16.4 If the Dick Fontaine Memorial Distance Race for PHRF and NEMA Multihull classes is held, the scores will **NOT** be included in the overall scores for the Regatta.
- 16.5 For Laser Masters, the North American Masters Age Handicap system will be used to determine the overall winner as follows: GGM (65+) add 0 points per race, GM (55-64) add 1 point per race, M (45-54) add 2 points per race, and APP (35-44) add 3 points per race to their score. The age of the competitor on the first day of the Regatta determines the age division in which the competitor will be

placed for applying the Laser Master Handicap Points. Ties will be broken as follows: (a) within age divisions: according to RRS A8 and (b) across age divisions: in favor of the sailor from the older division.

17.0 Safety

17.1 [NP][DP] **If there is a medical emergency, contact any RC vessel, or call the Harbormaster (VHF channel 9 or 16).**

17.2 [NP][DP] Competitors racing in the Laser, and 505 classes shall wear a US Coast Guard approved personal floatation device (PFD) while on the water, except for brief periods while adding, adjusting or removing clothing. The PFD shall depend 100% on foam for floatation. No modifications of the PFD are permitted and the PFD shall be the appropriate size for the sailor. The PFD must be worn outside of all clothing except that a thin shirt may be worn over the PFD.

17.3 [NP][DP] A boat retiring from a race shall notify a race committee vessel before leaving the racing area, or, when that is impossible, the NBYC Office immediately after arriving ashore.

18.0 Disposal of Trash

18.1 [DP] Boats shall not intentionally discharge trash into the water. The penalty for breaking this rule will be at the discretion of the protest committee. This changes RRS 47.

19.0 Haul-Out Restrictions

19.1 Keelboats shall not be hauled out during the regatta except with and according to the terms of the prior written permission of the Protest Committee.

20.0 Courtesy Broadcasts

20.1 Yellow Race Committees will make courtesy broadcasts to inform competitors of the order of starting, postponements, general recalls, and other race-related information on their racing area channel. See 6.1

20.2 The absence, inaccuracy or untimeliness of such broadcasts shall not be grounds for granting redress. This changes RRS 62.1.

21.0 Prizes

21.1 All classes will be awarded first through third place.

21.2 Prizes for the Dick Fontaine Memorial Distance Race will be awarded for first through third place if the race is held. **The award ceremony for the Distance Race will take place after racing on Sunday.**

21.3 The Buzzards Bay Bowl will be awarded to a boat with the best all-around performance, as determined by the Race Committee.

Supplement A to the Laser Sailing Instructions

A 1.0 SCHEDULE: There will be a Skippers' Meeting on Friday at 1100 at the Knowles property on the west side of Padanaram Harbor on Smith Neck Road.

A 2.0 EQUIPMENT: Rig swapping will be allowed

SUPPLEMENT B TO THE 505 SAILING INSTRUCTIONS GATE START PROCEDURE

B 1.0 The Race Committee will appoint the pathfinder. The pathfinder will normally be the boat that placed third or greater in the previous race that is able to race and has not yet served as pathfinder.

B 2.0 The sail number for the pathfinder will be posted on the official notice board for the first scheduled race of the day. For subsequent races each day, the sail number of the pathfinder will be posted on the RC signal boat as soon as possible after the completion of the previous race.

B 3.0 Prior to the preparatory signal, the pathfinder shall report to the gate boat and follow the race committee's instructions.

B 4.0 The starting line will be between the port end starting mark and the orange flag on the gate boat.

B 5.0 Prior to the warning signal, the RC will display on a white board the time in minutes between the starting signal and the time at which the gate boat will stop at the starboard end of the starting line.

B 6.0 After the starting signal a boat shall not interfere with the pathfinder or gate boat, pass between the pathfinder or gate boat, nor cause another boat to interfere in these ways. If a boat breaks this rule and is identified, she shall be disqualified without a hearing, even if the race is re-started or re-sailed. If the race is re-started, the race committee shall display her sail number for no less than three minutes before the warning signal of the next race, and if the race is re-started or re-sailed, she shall not sail in it. If she does so her disqualification shall not be excluded in calculating her series score. This changes RRS 36, 63.1 and A5.

- B 7.0** No later than ten seconds after the starting signal, the pathfinder shall sail a close-hauled port tack course from the port limit mark. The gate boat will maintain position close astern and slightly to leeward of the pathfinder. The pathfinder shall continue to sail this course until she is released with one whistle from the gate boat. She may then sail her proper course.
- B 8.0** All boats, except for the pathfinder, shall start on starboard tack and pass astern of the gate boat before the gate closes.
- B 9.0** After the release of the pathfinder, the gate boat will maintain her course and speed until the gate has been open for the period signaled (see 5.0). She will then stop, make one long signal, drift for one minute and signal the close of the gate by lowering the orange flag with one short signal.
- B 10.0** A boat shall not start after the close of the gate.

Supplement C
to the PHRF AND NEMA MULTIHULL Sailing Instructions

C 1.0 CLASS IDENTIFICATION:

Each PHRF boat shall display the numeral pennant corresponding to her class flag (see SI 9.5) while racing. The pennant shall be attached to the boat's backstay (or starboard shroud if there is no backstay).

C 2.0 EQUIPMENT:

On boats with retractable bowsprits, the bowsprit shall be retracted when not in the process of setting, flying, or taking down the spinnaker. When approaching a windward mark without the spinnaker set, the bowsprit shall not be extended until the bow of the boat passes the mark. The Scoring Penalty, RRS 44.3, will apply. The penalty will be 30%.

C 3.0 COURSES: For NEMA multihulls, the W and WO courses with more than 2 legs will have the leeward mark placed approximately .5 miles downwind of the starting line. They shall not cross the starting line while sailing toward their leeward mark. For example, in a W4 course, they shall round the windward mark, then the farthest leeward mark, then the windward mark and finish at the finish line.

SUPPLEMENT D

TO THE SAILING INSTRUCTIONS FOR
THE DICK FONTAINE MEMORIAL DISTANCE RACE
FOR ALL PHRF AND MULTIHULL BOATS

- D 1.0** A distance race for PHRF Race, PHRF Cruise and NEMA multihull classes is scheduled for Friday, August 6. If it is impractical to sail a distance race in the expected weather conditions the Race Committee will signal a course from Attachment 4 of the Sailing Instructions.
- D 2.0** This race will NOT count in the overall results for the regatta if it is held.
- D 3.0** The start for all classes, including PHRF Cruising will be on the Yellow racing area. The starting line will be between the course side of a portable mark (designated as "U") or a permanent mark (also designated "U") at the port end and the staff from which an orange flag is displayed on the race committee signal boat.
- D 4.0** Unless the course is shortened, the finish line will be between the course side of the final mark of the course and the staff from which a blue flag is displayed on the race committee signal boat.
- D 5.0** The race committee will post the marks of the course in order and the side on which each is to be left P(ort) or S(tarboard) on a white board on the signal boat.
- D 6.0** Mark W will be a portable mark. The distance and bearing to this mark, if used, will be posted on the signal boat. Mark W will be used at the discretion of the race committee.
- D 7.0** A chart will be posted on the official notice board at NBYC, showing the locations of each rounding mark. Possible marks of the course, with their approximate location and description are in Attachment 4 below.
- D 8.0** [DP]Competitors shall monitor VHF channel 72 while racing. The failure of a boat to hear the changes shall not be grounds for granting redress. This changes RRS 62.1(a).

Attachments:

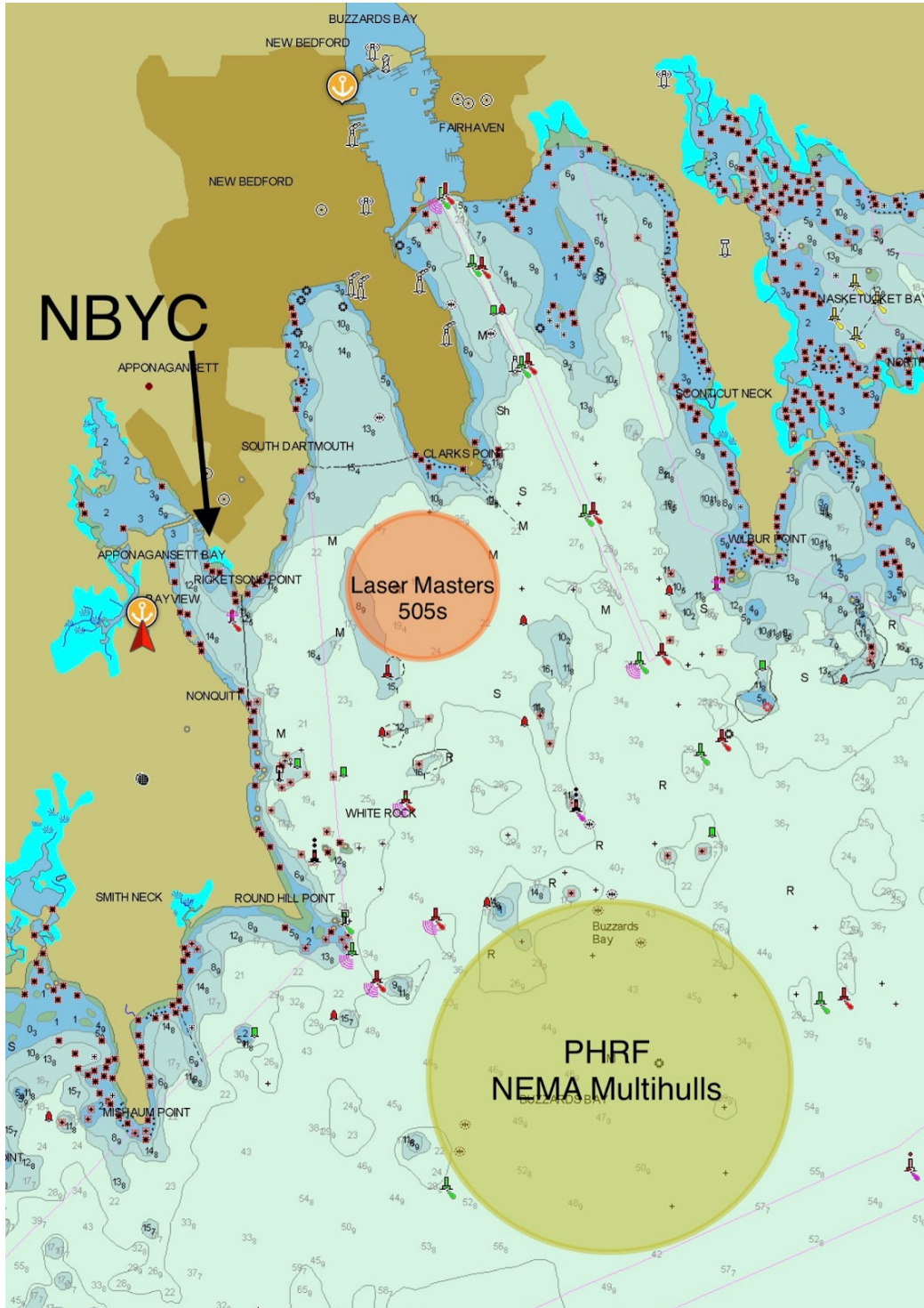
1: Racing Area locations, 2 pages

2: Course diagrams, 2 pages

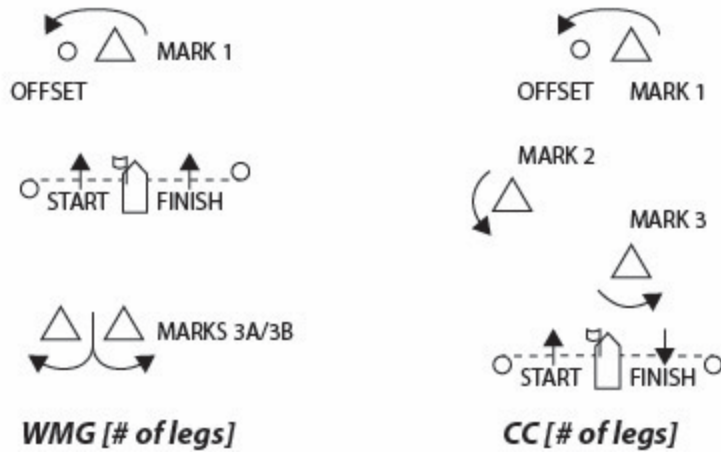
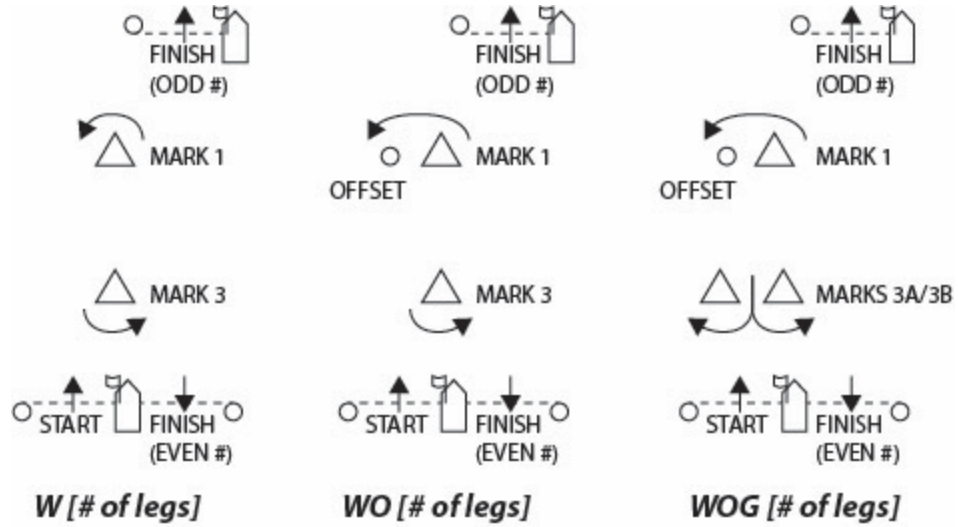
3: Mark descriptions, 1 page

4: Permanent mark locations for PHRF and multihull classes, 1 page

**Buzzards Bay Regatta 2021
ATTACHMENT 1 – CIRCLE LOCATIONS**



Buzzards Bay Regatta 2021
Sailing Instructions
Attachment 2 – Course Diagrams



Buzzards Bay Regatta 2021
Attachment 3 – Mark Descriptions

Racing Area	Yellow	Orange
Classes	PHRF RACE PHRF CRUISE NEMA MULTIHULL	Laser Masters/ 505s
Start	Yellow Cylinder	Yellow Cylinder
Original 1,2,3 and Gates	Orange Tet	Orange Cyl.
Offset	Red Ball	Red Ball
Change	Yellow Tet	Yellow Tet
Finish	Yellow cylinder	Red Ball

ATTACHMENT 4 - BUOY NAMES AND LOCATIONS FOR THE DICK FONTAINE MEMORIAL RACE FOR ALL PHRF AND MULTIHULL BOATS

MARK	DESCRIPTION	POSITION
A	G" 1"	41° 25' 84" N 71° 02' 26" W
B	R "2"	41° 26' 14" N 71° 00' 65" W
C	R" 4"	41° 27' 03" N 70° 59' 23" W
D	G" 5"	41° 28' 97" N 70° 57' 37" W
E	R" 6"	41° 28' 05" N 70° 56' 68" W
F	R" 8"	41° 28' 95" N 70° 53' 84" W
G	RW" CH"	41° 26' 56" N 70° 53' 37" W
H	G" 1"	41° 31' 73" N 70° 50' 77" W
I	G" 9"	41° 32' 86" N 70° 46' 45" W
J	R" 10"	41° 34' 39" N 70° 43' 20" W
K	RW" BB"	41° 30' 55" N 70° 49' 90" W
L	G" 7"	41° 30' 42" N 70° 54' 31" W
M	Buzzards Tower	41° 23' 82" N 71° 02' 07" W
U	START/FINISH MARK	AS NOTED BY THE RACE COMMITTEE
W	PORTABLE MARK	AS NOTED BY THE RACE COMMITTEE
X	NBYC "A"	41° 34' 39" N 70° 56' 26" W