

Red Gear Racing Championships

May 21 – 23, 2021

SAILING INSTRUCTIONS

1. RULES

The regatta will be governed by the rules as defined in the current Racing Rules of Sailing, including F16, F18 and Nacra 15 Class Rules and Hobie 16 Rules. Where there is a conflict between the NOR and SIs, the SIs shall take precedence.

2. NOTICES TO COMPETITORS

Notices to competitors will be posted on the official regatta notice board located at the Regatta Headquarters Recreational Vehicle adjacent to the Beach Pen at CCSC on Sand Key.

3. CHANGES TO SAILING INSTRUCTIONS

Any change to the sailing instructions will be posted before 0930 on the day it will take effect, except that any change to the schedule will be posted by 2000 on the day before it will take effect.

4. SIGNALS MADE ASHORE

4.1. Signals made ashore will be displayed at the Regatta Headquarters designated flagpole at CCSC on Sand Key.

4.2. When flag AP is displayed ashore, "1 minute" is replaced with "not less than thirty (30) minutes" in the race signal AP.

5. SCHEDULE

5.1 The schedule is as follows:

Dates of Racing and First Warning Signal			
21 May	Friday	10:00	Competitor's meeting
21 May	Friday	12:30	Warning signal first race of Day 1
22 May	Saturday	12:30	Warning signal first race of Day 2
23 May	Sunday	12:30	Warning signal first race of Day 3

5.2 A maximum of 12 races are scheduled.

5.3 A maximum of five (5) races per day are scheduled.

5.4 There shall be no race started after 1400 hours on Sunday, May 23.

5.5 The Classes starts will be announced at the competitors meeting.

5.6 One race shall constitute a regatta.

6. CLASS FLAGS

The F18, F16, N15 and H16 Class flags shall be International Code Flag Numbers 1 to 4 as follows:

1 Unaone [u..ne wAn]		F 18
2 Bissotwo [bis.ou 'tu.]		F 16
3 Terrathree [ter.æ trɪ]		Nacra 15
4 Kartefour [ka:.te 'fo:.we]		Hobie 16

7. RACING AREA AND COURSES

- 7.1. The racing areas are located both offshore in the Gulf west of Clearwater Beach, either to the North or the South of the channel dependent on wind and inside east of Clearwater Community Sailing Center in the Bay.
- 7.2. Racing areas are as shown in Appendix B.
- 7.2. The Racing Area shall be posted at Regatta Headquarters and announced at the morning briefings by 10:00AM Thursday, Friday, Saturday, and Sunday.
- 7.3. The Courses are as shown in Appendix A and will be signaled by a card with the alpha-numeric designation posted on the Signal Boat.

8. MARKS

- 8.1. The Windward Mark will be an Inflatable shape. The Offset Mark will be a shape. The New Windward Mark, as provided for in instruction 10.1, will be an inflatable shape of a different color.
- 8.2. Mark colors and shapes shall be defined and presented at the morning competitors' meetings.
- 8.3. Except for gate marks (Marks 2p/s & 4p/s), marks shall be rounded to port. If one of the gate marks is missing, boats shall round the remaining mark to port.

9. THE START

- 9.1. The starting line shall be between an inflatable shape at one end and an ORANGE flag on the race committee signal boat at the other end. Both ends may be located on a race committee boat instead of being in the water.
- 9.2. The race committee will not hail the sail numbers of OCS boats. This changes rule 62.1.
- 9.3. A boat starting later than five (5) minutes after her starting signal will be scored Did Not Start (DNS) without a hearing. This changes rules A4 and A5.
- 9.4. A boat touching the Signal Boat is required to complete a two-turn penalty as soon as possible. This changes rule 44.1. A boat not completing this two-turn penalty may be protested.

10. CHANGE OF THE NEXT LEG OF THE COURSE

- 10.1. To change the next leg of the course, the race committee will lay a new mark (or move the finishing line) and remove the original mark as soon as practicable. When in a subsequent change a new mark is replaced, it will be replaced by an original mark.
- 10.2. Gates (Marks 3s/p & 4p/s) may be adjusted without further signaling to maintain the appropriate configuration. This changes rule 33.

11. THE FINISH

- 11.1. The finishing line will be between an inflatable shape at one end and a BLUE flag on a race committee boat at the other end. Both ends may be located on a race committee boat instead of being in the water.

12. PENALTY SYSTEM

Rule 44.1 is changed for touching the Signal or Finish boats so that the One-Turn Penalty is replaced by a Two-Turn Penalty. A boat not completing this two-turn penalty may be protested.

13. TIME LIMITS

- 13.1 Mark 1 time limit is fifteen (15) minutes.
- 13.2 If no boat has passed Mark 1 within the Mark 1 time limit the race will be abandoned. This changes rule 62.1(a).
- 13.3 Time limit for the first boat to finish is sixty (60) minutes.
- 13.4 Boats failing to finish within ten (10) minutes after the first boat sails the course and finishes or the time limit, whichever is shorter, will be scored Did Not Finish (DNF) without a hearing. This changes rules 35, A4 and A5.

14. PROTESTS AND REQUESTS FOR REDRESS

- 14.1. A boat intending to protest shall notify the RC Finish boat as soon as reasonably possible after finishing.
- 14.2. Protest forms are available at the Regatta RV Office adjacent to the Beach.
- 14.3. The protest time limit is 60 minutes after the Race Committee Signal Boat Docking Time. Written protests shall be delivered to the Regatta Office at CCSC on Sand Key within 60 minutes of the posted Signal Boat Docking Time.
- 14.4. Notices will be posted on the Official Regatta Notice Board no later than 30 minutes after the protest time limit to inform competitors of hearings in which they are parties or named as witnesses. Hearing will be held in the protest room at a location to be announced and posted on the official notice board and may be via online.
- 14.5. On the last day of the event, requests to reopen a hearing or requests for redress from a protest committee decision shall be made before the protest time limit or within fifteen (15) minutes of being informed of the decision, whichever is later. This changes rules 62.2 and 66.
- 14.6. The score for a boat violating Rules 9.4 or 11.2 above, and disqualified by the Protest Committee, shall not be excluded. This changes rule A2.1.

15. SCORING

- 15.1. The Low Point Scoring System of Appendix A of the Racing Rules of Sailing will apply.
- 15.2. Race Exclusion Schedule - Shall not apply to exclusions defined in SI 15.5. This changes Rule A2.1.
 - 16.2.1. After 6 races, a competitor's lowest score shall be excluded.
 - 16.2.2. After 12 races, a competitor's lowest two (2) scores shall be excluded.
- 15.3. One completed race shall constitute a regatta.

16. SAFETY

- 16.1. All boats shall sign out prior to leaving the beach each day and shall sign in each day after racing.
- 16.2. A boat that retires from a race shall notify a race committee boat before leaving the racing area, or, if that is not possible, notify a regatta official or the yacht club office immediately upon arrival on shore. A boat shall accept assistance from a race committee boat when so directed by the race committee.
- 16.3. Competitors shall wear a personal floatation device (PFD) while on the water, other than for brief periods while adding or removing clothing. Violation of this rule shall not be grounds for a protest. This changes rule 61.1.
- 16.4. All support boats must monitor the regatta VHF channel to be announced at the competitors meeting.
- 16.5. All support boats must render assistance if requested by the race committee.

17. REPLACEMENT OF CREW

Substitution of competitors shall not be allowed without approval of the Organizing Authority.

19. PROHIBITED SUBSTANCES

19.1. For adult US SAILING championship events, no competitor shall use, either on or off the water: marijuana or any other controlled substance (as defined in 21 U.S. Code 802) the possession of which is unlawful under 21 U.S. Code 841.

19.2. For Junior and Youth events or for junior or youth competitors in any regatta, no participant or competitor shall use, either on or off the water: marijuana or any other controlled substance (as defined in 21 U.S. Code 802) the possession of which is unlawful under 21 U.S. Code 841, or alcoholic beverages (distilled spirits, wine, and beer, each as defined in chapter 51 of the U.S. Internal Revenue Code and intended for beverage use).

19.3. An alleged breach of one of these regulations shall not be grounds for a protest. However, when the protest committee believes that a competitor may have breached one of these regulations, it shall follow the process described in racing rule 69.1, and a competitor found to have breached one of these regulations shall be excluded from the remaining races of the series and, where practicable, removed from the regatta venue and sent home. The competitor's boat shall be disqualified from all races of the series.

20. RADIO/CELL PHONE COMMUNICATIONS

Competitors are prohibited from having any electronic communication device including cell phones and radios on board while racing. Coach boats must only monitor radio channels for emergency purposes and/or RC directives.

21. PRIZES

21.1. Prizes may be awarded to the first, second and third place boats in the F18, F16, N15 and Hobie 16 classes. Cash awards may be awarded to the F18, F16 and Hobie 16 Fleets.

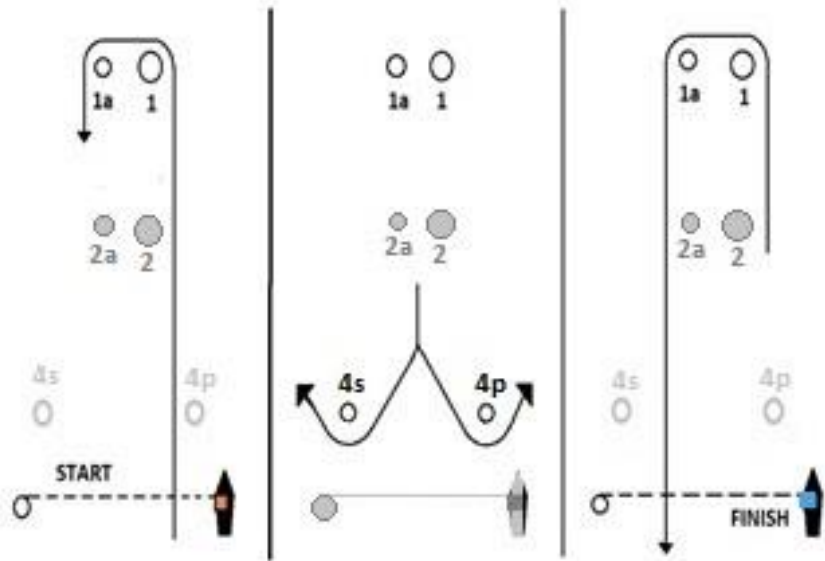
22. DISCLAIMER OF LIABILITY

22.1. Competitors participate in the regatta entirely at their own risk. See rule 4, Decision to Race. The organizing authority will not accept any liability for material damage or personal injury or death sustained in conjunction with or prior to, during, or after the regatta.

22.2. Competitors who participate in the regatta agree to have their images used in any promotion of the sponsors of this event.

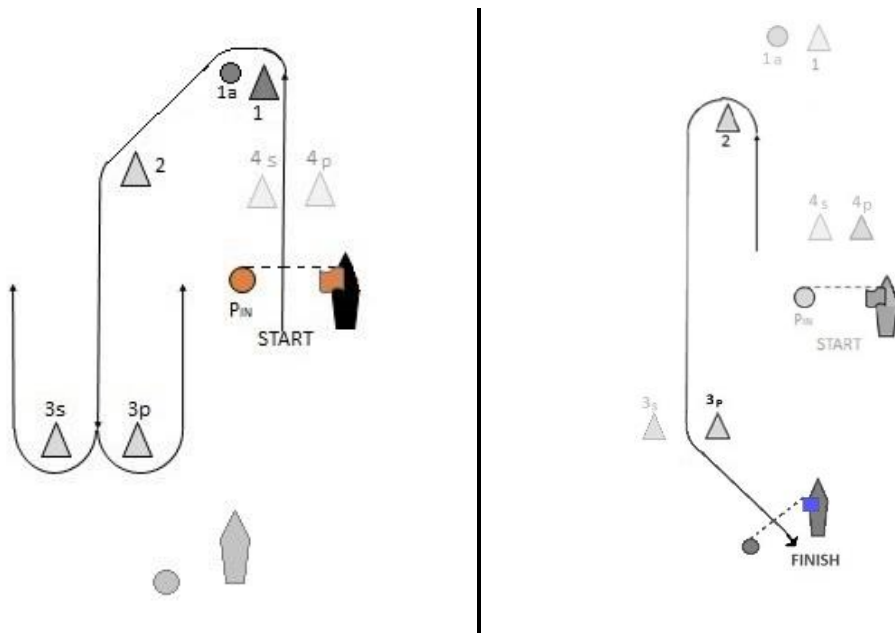
APPENDIX A — COURSE DIAGRAM

F18 & F16 Course L4 — Start — 1 — 1a — 2(p/s) — 1 — 1a — Finish (Hobie 16 Course L4 not Illustrated — Start — 2 — 2a — 4p/s — 2 — 2a — Finish)



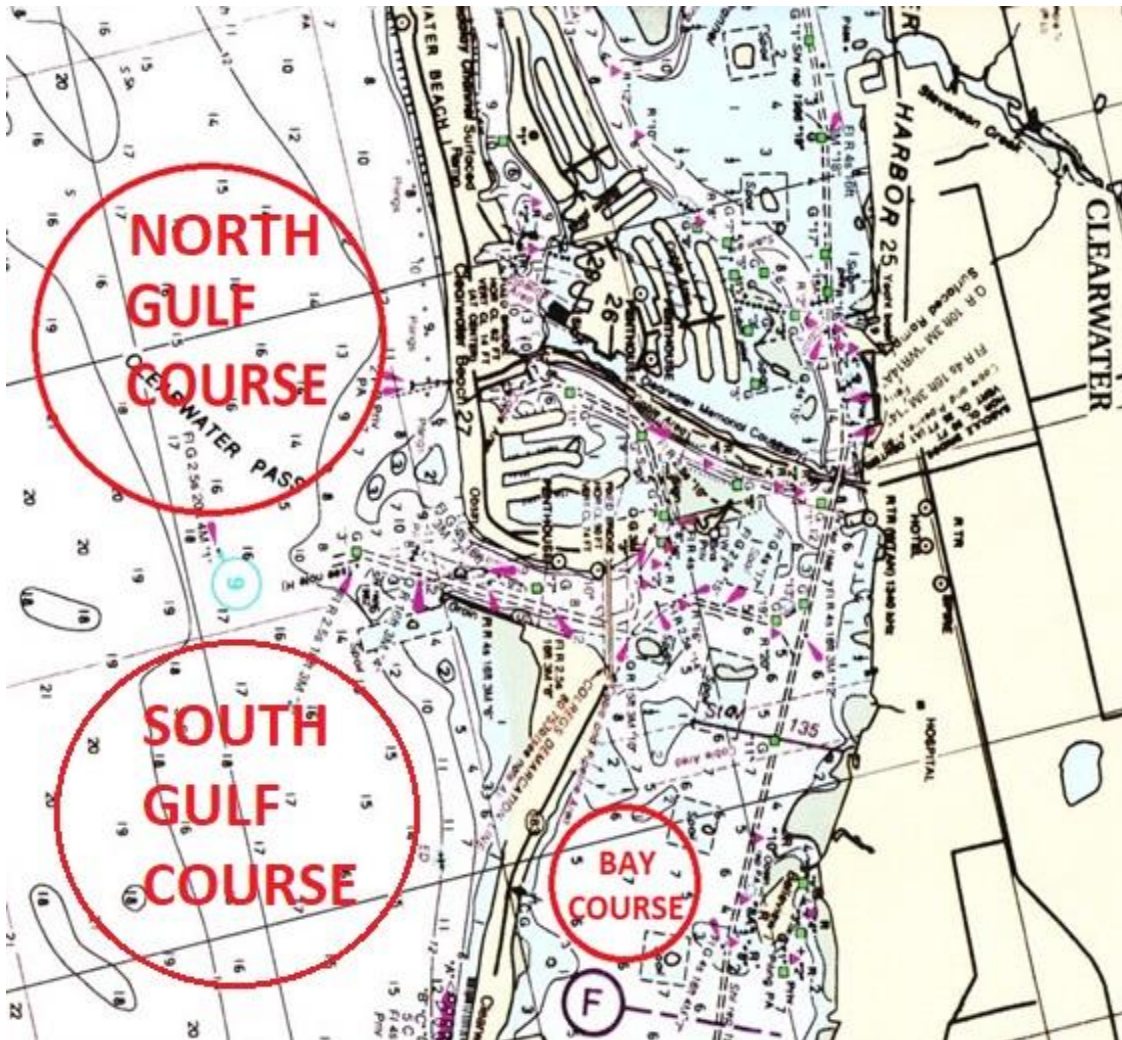
(Friday Racing F18 & F16 Course Illustrated)

Course T5 Trap — Start — 1/1a — 2 — 3(p/s) — 2 — 3p — Finish (Nacra 15 & Hobie 16 Course L4 not Illustrated — Start — 1 — 1a — 4p/s — 1 — 1a — Finish)



(Saturday & Sunday F18 & F16 Course Illustrated)

APPENDIX B – RACING AREAS



NOTE: Coaches must remain 150 feet outside the starting line and lay lines of the course. The Race Committee shall presume any Coach violating this notice is providing outside assistance to his/her registered Team and may protest the Team (Rule 41). Coaches violating this notice may be directed to leave the Racecourse area defined in SI Attachment B for the day. The Race Committee observing a Coach failing to comply shall presume outside assistance is provide to the registered Team and may file a protest under Rule 41.