



FORMULA 18 AMERICAS CHAMPIONSHIP

September 8-12, 2021



Alamitos Bay Yacht Club
Long Beach, California, USA

SAILING INSTRUCTIONS

The organizing authority for the Formula 18 Americas Championship Regatta is the Alamitos Bay Yacht Club 7201 E Ocean Blvd, Long Beach CA 90803 on behalf of the United States Formula 18 Association.

1. RULES

1.1. The regatta will be governed by the rules as defined in *The Racing Rules of Sailing*.

2. CHANGES TO SAILING INSTRUCTIONS

Any change to the sailing instructions will be posted before 1000 on the day it will take effect, except that any change to the schedule of races will be posted by 2000 on the day before it is to take place.

3. NOTICES TO COMPETITORS

3.1. Notices to competitors will be posted on the official notice on Regatta Network. Except for notices of protests, all official regatta notices will be posted here.

3.2. Notices of protest and notices from the jury will be posted on the protest notice board located outside the protest office across from the galley.

4. SIGNALS MADE ASHORE

4.1. Signals made ashore will be displayed from the flagpole of Alamitos Bay Yacht Club.

4.2. When flag AP is displayed ashore. '1 minute' is replaced with 'not less than 60 minutes' in the race signal AP. This changes RRS Race Signals, AP.

5. SCHEDULE OF RACES

5.1.

Dates of Racing		
Wednesday, Sept 8, 2021	1100	Practice Race Competitors Briefing
	1355	Distance Practice Race first warning
Thursday, Sept 9, 2021	0930	Competitors meeting followed by coaches meeting
	1155	Racing first warning, 4 races scheduled
Friday, Sept 10, 2021	1155	Racing first warning, 4 races scheduled
Saturday, Sept 11, 2021	1155	Racing first warning, 4 races scheduled
	1155	Racing first warning, 3 races scheduled
Sunday, Sept 12, 2021	1500	No warning after 1500
	After racing	Awards Presentation

5.2. A maximum of 15 races are scheduled.



FORMULA 18 AMERICAS CHAMPIONSHIP

ALAMITOS BAY YACHT CLUB



- 5.3. To alert boats that a race or sequence of races will begin soon, the orange starting flag will be displayed with one sound at least five minutes before a warning signal is made.

6. CLASS FLAGS

The class flag will be a white flag with an F-18 logo

7. RACING AREAS

Location of racing areas will be as shown below. Racing areas will be posted by 1000 on the day they will take effect.

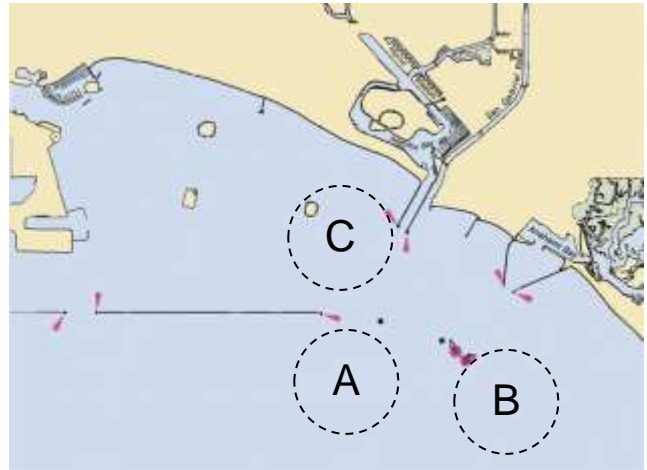
8. THE COURSES

- 8.1. The diagrams in Addendum A show the courses, including the approximate angles between legs, the order in which marks are to be passed, and the side on which each mark is to be left.

- 8.2. The Courses in Addendum B show the courses for the Distance Practice Race.

- 8.3. The course shall be signaled by placards displayed on the race committee signal vessel.

- 8.4. No later than the warning signal, the race committee signal vessel will display the approximate compass bearing of the first leg.



9. MARKS

- 9.1. Marks 1, 2P, 2S, will be yellow inflatable shapes. Mark 1A will be an orange inflatable shape.

- 9.2. Marks shall be rounded to port. When there is a gate, boats shall sail between the gate marks from the direction of the previous mark and round either gate mark. If one of the gate marks is missing, boats shall round the remaining mark to port.

- 9.3. New marks, as provided in instruction 11.1, will be a different color from the original.

- 9.4. The starting marks will be staffs displaying orange flags.

- 9.5. The finishing marks will be staffs displaying blue flags.

10. THE START

- 10.1. The starting line will be between staffs displaying orange flags. One end shall and both ends may be on race committee vessels.

- 10.2. The race committee may attempt to hail OCS boats. Failure of the committee to make the attempt or for the competitor to hear the hail will not be grounds for redress. This changes rule 62.1.

11. CHANGE OF THE NEXT LEG OF THE COURSE

- 11.1. To change the next leg of the course, the race committee will lay a new mark (or move the finishing line) and remove the original mark as soon as practicable. When in a subsequent change a new mark is replaced, it will be replaced by an original mark.

12. THE FINISH

- 12.1. The finishing line will be between staffs displaying blue flags. One end shall and both ends may be located on a race committee boat.



FORMULA 18 AMERICAS CHAMPIONSHIP

ALAMITOS BAY YACHT CLUB



- 12.2. In the interest of starting another race in a timely fashion, the race committee may assign a finish position to the last finisher(s) in a class provided that the position(s) can be determined in a reasonable manner.

13. PENALTY SYSTEM

- 13.1. RRS 44.1 is changed so that the Two-Turns Penalty is replaced by the One-Turn Penalty.
- 13.2. A penalty for an incident that occurs within zone of the windward mark or on the offset leg shall be delayed and taken promptly when on the downwind leg. This changes RRS 44.2.

14. RACE TIME LIMITS AND TARGET TIMES

- 14.1. Time limits and target times are as follows:

<u>Race Time Limit</u>	<u>Mark 1 Time Limit</u>	<u>Target Time</u>
75	20	40

If no boat has passed Mark 1 within the Mark 1 time limit the race will be abandoned. Failure to meet the target time will not be grounds for redress. This changes rule 62.1(a).

- 14.2. Boats failing to finish within twenty (20) minutes after the first boat sails the course and finishes will be scored Time Limit Expired without a hearing. This changes rules 35, A4 and A5.

15. PROTESTS AND REQUESTS FOR REDRESS

- 15.1. Protest forms are available at the protest desk located in the Quarterdeck across from the Galley. Protests and requests for redress or reopening shall be delivered there within the appropriate time limit.
- 15.2. The protest time limit is 30 minutes after the race committee signal boat arrives at the dock or the race committee signals “no more racing today” whichever is later.
- 15.3. Notices will be posted no later than 30 minutes after the protest time limit to inform competitors of hearings in which they are parties or named as witnesses. This will constitute notification required by rule 63.2. Hearings will be held in the protest room, located within the protest office, in the approximate order as received.
- 15.4. Notices of protests by the race committee or protest committee will be posted to inform boats under rule 61.1(b).
- 15.5. On the last scheduled day of racing a request for reopening a hearing shall be delivered
 - a) within the protest time limit if the requesting party was informed of the decision on the previous day;
 - b) no later than 30 minutes after the requesting party was informed of the decision on that day.

This changes rule 66.

- 15.6. On the last scheduled day of racing a request for redress from a protest committee decision shall be delivered no later than 30 minutes after the decision was posted. This changes rule 62.2.

16. SAFETY REGULATIONS

- 16.1. Check-Out and Check-In Procedures: Before the warning signal on the first race each day, all boats shall sail by the stern of the race committee signal boat, hail her sail number and obtain the acknowledgment of the race committee. [DP]
- 16.2. A boat that retires from a race shall notify the race committee as soon as possible. [DP]
- 16.3. A boat shall accept assistance from a race committee boat when so directed by the race committee. [DP]



FORMULA 18 AMERICAS CHAMPIONSHIP

ALAMITOS BAY YACHT CLUB



17. REPLACEMENT OF CREW OR EQUIPMENT

- 17.1. Substitution of competitors will not be allowed unless authorized by the race committee in advance for cases of injury or sickness. In cases of substitution new crew weight measurements shall be made as soon as practical.
- 17.2. Substitution of damaged or lost equipment will not be allowed unless authorized by the race committee. Requests for substitution shall be made to the committee at the first reasonable opportunity, which may be after the substitution.

18. EQUIPMENT AND MEASUREMENT CHECKS

A boat or equipment may be inspected at any time for compliance with the class rules and sailing instructions. On the water, a boat can be instructed by a race committee equipment inspector or measurer to proceed immediately to a designated area for inspection.

19. OFFICIAL VESSELS

Official vessels will be marked as follows:

Race Committee		Blue flag marked with white 'RC' and red anchor
Judges		White flag marked with black letters 'JUDGE'
Press		White flag marked with black letters 'PRESS'

20. COACH AND SUPPORT BOATS

- 20.1. Coach/Support boats are allowed for this regatta. The skipper of each coach/support boat must register with the organizing authority and pay the applicable fee.
- 20.2. All coaches and support personnel are required to attend a meeting which will be held immediately following the competitors' briefing. [DP]
- 20.3. All coach/support boats shall display an identification flag while on the water as directed by the race committee and return the flag at the conclusion of the regatta. No flag, banner, pennant, signal or shape other than that supplied by the organizing authority shall be displayed. [DP]
- 20.4. Coach/ support boats must be prepared to render assistance to any boat in need and perform any other function requested of them by the race committee. [DP]
- 20.5. Unless otherwise directed by the race committee, no coach/support boat may be within one hundred (100) yards of the course boundaries nor have any communication with a competitor between the first warning signal for a race and the time that race is abandoned or the competitor has finished and is 100 yards outside the finishing line and course boundaries. This changes Rule 41. [DP]
- 20.6. All coach/support boats must be equipped with their own VHF radios and monitor a designated VHF channel if requested to do so by the race committee. [DP]
- 20.7. The penalty for failing to comply with these requirements will be applied to the appropriate competitors' boats associated with the coach/support vessels personnel at the discretion of the



FORMULA 18 AMERICAS CHAMPIONSHIP

ALAMITOS BAY YACHT CLUB



protest committee. Additionally, upon receiving a report, the organizing authority may take other disciplinary action against the registered coach and/or support personnel.

21. TRASH DISPOSAL

Trash may be placed aboard support and race committee vessels. [DP]

22. BERTHING

Boats shall be stored overnight on a public beach in Alamitos Bay adjacent to Alamitos Bay Yacht Club. Security will be provided during the regatta.[DP]

23. RADIO COMMUNICATIONS

23.1. The Race Committee will use the VHF radios to make competitors aware of its intentions, the course to be sailed, starting times, course changes, On Course Side (OCS), postponements, and other information regarding the racing. Failure of the Race Committee to make a broadcast, the timing of a broadcast, or the failure of a boat to hear a broadcast shall not be grounds for redress under RRS 62.1(a).

23.2. Except in an emergency, a boat shall neither make radio transmissions while racing nor receive radio communications not available to all boats. This restriction also applies to mobile telephones.

24. PRIZES

Prizes will be awarded in accordance with the Notice of Race.

25. DISCLAIMER OF LIABILITY

Competitors participate in the regatta entirely at their own risk. See rule 3, Decision to Race. The organizing authority will not accept any liability for material damage or personal injury or death sustained in conjunction with or prior to, during, or after the regatta.

26. FURTHER INFORMATION

Additional useful information is available at www.abyc.org or contact the ABYC office abyc@abyc.org or +1 562 434 9955.

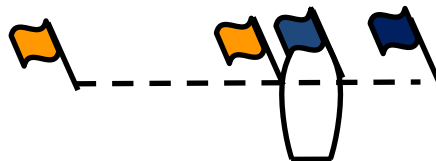
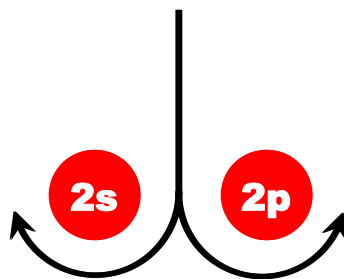
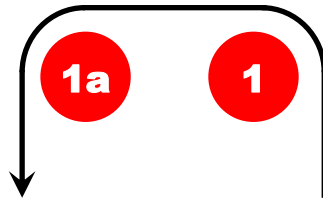
For further information please contact:

Event Chair: Eileen Hauble 949-309-7013 ehauble@aol.com
PRO: Steve Kuritz RRO 562-301-9445
Chief Judge: Kim Kymlicka NJ mkymlicka@sbcglobal.net



ADDENDUM A – COURSE DIAGRAMS

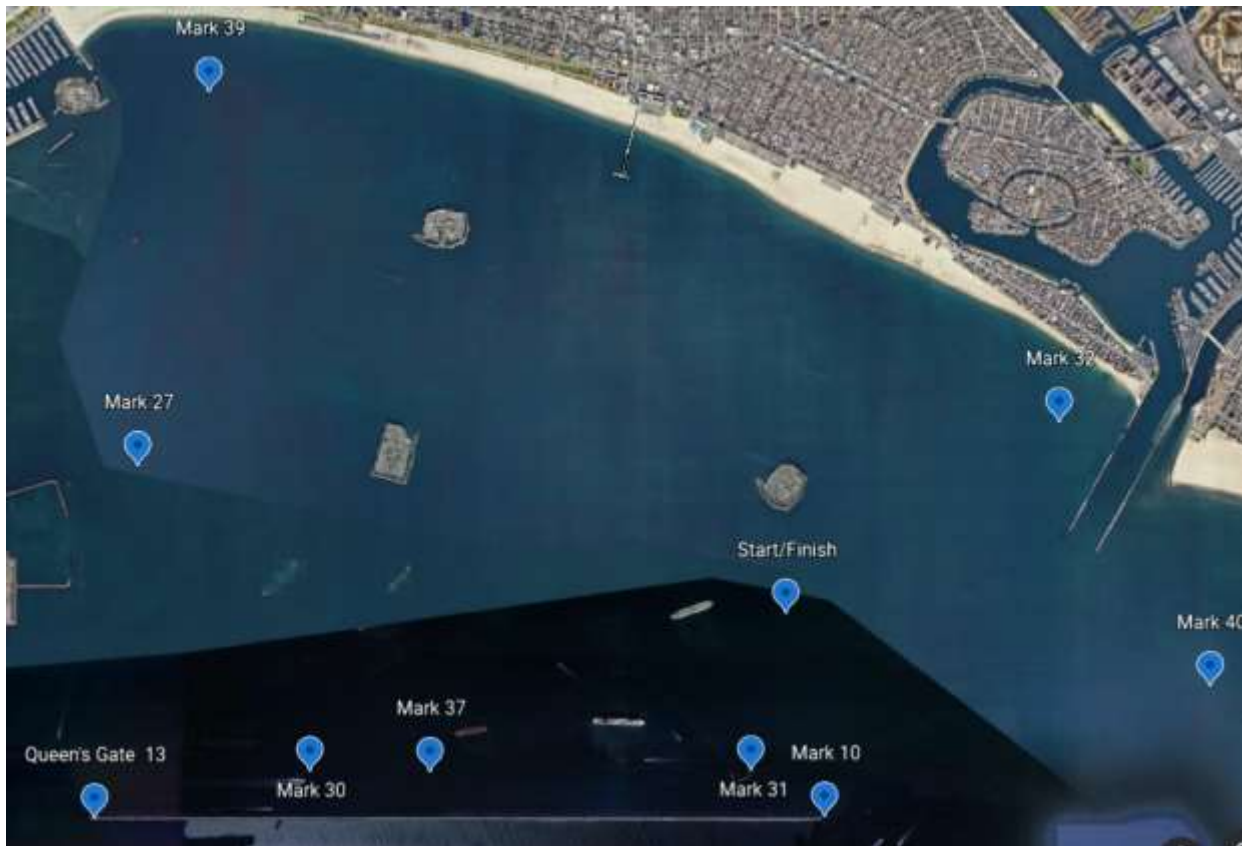
<i>LA</i>	Course LA – Windward/Leeward with Offset Mark, Leeward Finish
<i>Signal</i>	<i>Mark Rounding Order</i>
2	Start – 1 – 1a – 2s/2p – 1 – 1a – Finish
3	Start – 1 – 1a – 2s/2p – 1 – 1a – 2s/2p – 1 – 1a – Finish





Addendum B Random Leg Courses

Inner Harbor



CHARLIE COURSE START & FINISH

Course #	Distance	Mark Rounding Order
1	13.0	Start – 30s – 39– 13 – 40 – 32 – Finish
2	11.2	Start – 30s – 39 – 27 – 31 – 32 – Finish
3	12.0	Start – 10 – 13 – 39 – 37 - 32 – Finish

All Marks Rounded to Port unless indicated by s.



FORMULA 18 AMERICAS CHAMPIONSHIP

ALAMITOS BAY YACHT CLUB



Schedule of Permanent Marks

MARK	Mark Description	Latitude	Longitude
Start Finish	Start Finish (Approximate)	33° 44.107'N	118° 08.185'W
10	East End of Long Beach Breakwater	33°43'22.56"N	118° 8'8.56"W
13	West End of Long Beach Breakwater "Queen's Gate"	33°43'22.90"N	118°11'8.90"W
27	Red R "2" Navigation Buoy near Pier J	33°44'26.56"N	118°10'38.00"W

Schedule of Semi-Permanent Marks

MARK	Mark Description	Latitude	Longitude
30	Yellow Cylinder Buoy 100 yards north of West Measured Mile Marker	33° 43.490'N	118° 09.900'W
31	Yellow Cylinder Buoy 100 yards north of East Measured Mile Marker	33° 43.490'N	118° 08.690'W
32	Yellow Cylinder Buoy 1/2 mile NW from the West End of the Alamitos Bay Jetty.	33° 44.473'N	118° 07.425'W
36	Yellow Cylinder Buoy 1/2 mile west of the West Measured Mile Marker, and 100 yards north of the Breakwater	33° 43.470'N	118° 10.450'W
37	Yellow Cylinder Buoy 100 yards north of the « mile Measured Mile Marker, midway between Mark 31 and Mark 30.	33° 43.480'N	118° 09.310'W
38	Yellow Cylinder Buoy 400 yards SE from the south Marker Horn on Island Chaffee.	33° 44.107'N	118° 08.185'W
39	Yellow Spar Buoy 1/2 mile ENE of Island Grissom	33° 45.560'N	118° 10.311'W
40	Yellow Cylinder Buoy, 3/4 mile SW of Seal Beach Pier.	33° 43.383'N	118° 07.058'W

1. Mark locations vary slightly due to tide changes which affects swing.
2. Marks may not be on station for various reasons.
3. The Spar Buoys are Yellow.
4. Locations and distances, when given are approximate
5. Chart references: No's, 18746 & 18749