



# NOTICE TO COMPETITORS



**Notice Number: #2**

**Posted: June 17, 2021**

**Subject: SI Amendment #2**

---

**SI 9.1 is changed to read**

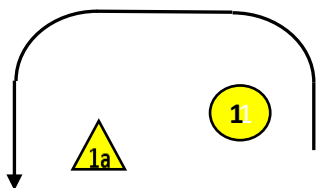
9.1 Mark 1 (windward mark) for monohull boats, except Thistles, is an orange cylinder. Mark 1 (windward mark) for multihull boats and Thistles is a yellow cylinder.

**Attachment A – WDR – Windward Start, Downwind Reach Finish is changed as shown on the next page.**

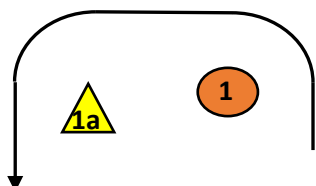
# ATTACHMENT A

## WDR

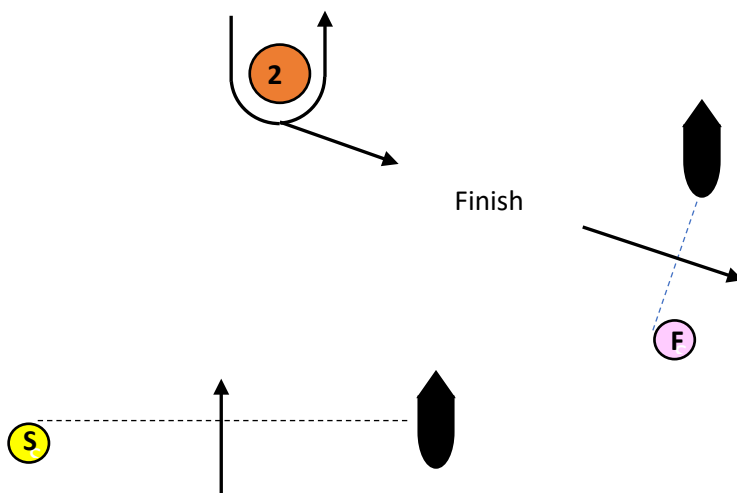
Windward Start  
Downwind Reach Finish



Multihull and Thistle Windward Mark (yellow)



Monohull (except Thistle) Windward Mark (orange)



Course	Mark Rounding Order
WDR	S - 1 - 1a - 2 - F
WDR2	S - 1 - 1a - 2 - 1 - 1a - 2 - F