

2021 Salty 100

SAILING INSTRUCTIONS (SIs)

Amended August 26, 2021

Amendments are in red below

The notation '[NP]' in a rule of the sailing instructions (SIs) means that a boat may not protest another boat for breaking that rule. This changes RRS 60.1(a). The notation [DP] in a rule of the sailing instructions means that the protest committee can decide an appropriate penalty, after taking evidence, up to and including disqualification

1 RULES

- 1.1 The event is governed by the rules as defined in *The Racing Rules of Sailing*.

2 CHANGES TO SAILING INSTRUCTIONS

- 2.1 Any change to the sailing instructions will be posted before 0900 on the day it will take effect, except that any change to the schedule of the race will be posted by 2000 on the day before it will take effect.
- 2.2 Changes to a sailing instruction may be made on the water by hoisting code flag L and making an announcement on VHF CH 72.

3 COMMUNICATIONS WITH COMPETITORS

- 3.1 Notices to competitors will be posted on the official notice board located on the [Salty 100 webpage](#) on Regatta Network.
- 3.2 On the water, the race committee intends to monitor and communicate with competitors on VHF CH72.
- 3.3 [DP] While racing, except in an emergency, a boat shall not make voice or data transmissions and shall not receive voice or data communication that is not available to all boats.

4 CODE OF CONDUCT

- 4.1 [DP] Competitors and support persons shall comply with reasonable requests from race officials.

5 SIGNALS MADE ASHORE

- 5.1 Signals made ashore will be displayed at the flagpole at BYC.

5.2 When flag AP is displayed ashore, '1 minute' is replaced with 'not less than 60 minutes' in Race Signals AP.

6 SCHEDULE OF RACE

6.1

Class	Class Flag	Start
Doublehanded	Numeral 1	1300
ORR	Numeral 2	1315
PHRF	Numeral 3	1330

6.2 To alert boats that a race or sequence of races will begin soon, the orange starting line flag will be displayed with multiple sounds at least two minutes before a warning signal is made.

7 RACING AREA

7.1 SI Addendum A and B show the location of the racing area(s).

8 COURSES AND MARKS

8.1 The course has 4 buoys and is 88.3 nm.

- (1) R 36 FI R 4s (Sow and Pigs) southwest of Cuttyhunk at approximately 41° 23.8 N, 070° 59.1 W shall be left to port outbound.
- (2) R 32 FI R 2.5s Whistle Vineyard Sound Entrance Buoy at approximately 41°22.1 N, 070°57.4W shall be left to starboard.
- (3) R2 Whistle FL R 4s southeast of Point Judith at approximately 41°20.9 N, 071°30.4 W shall be left to starboard
- (4) R10 FI R 4s at approximately 41°34.4 N, 070°43.2W shall be left to port.

8.2 In the event of an unfavorable forecast, a decision might be made to use a shorter course. The short course has three buoys and is 43.2 nm.

- 1) R36 FI R 4s (Sow and Pigs) southwest of Cuttyhunk at approximately 41° 23.8 N, 070° 59.1 W shall be left to starboard.
- 2) [R FI 2.5s Bell] Red lateral buoy (shape: pillar) "Buzzards Bay Lighted Bell Buoy 2 FI R 2.5" at approximately 41° 26.1N 071° 00.7W shall be left to starboard.
- (5) 3) R10 FI R 4s at approximately 41°34.4 N, 070°43.2W shall be left to port.

8.3 **No later than the warning signal, the race committee signal vessel will display the letter of the course to be sailed – "L" for the longer course or "S" for the shorter course.**

8.4 Courses will not be shortened. This changes RRS 32.

9 THE START

- 9.1 Races will be started using RRS 26 with the warning signal made 5 minutes before the starting signal.
- 9.2 The starting line is between a staff displaying an orange flag on the signal vessel at the starboard end and the course side of Sippican Harbor Lighted Red Buoy "2" (F1 R) at Centerboard Shoal (BYC mark "G").
- 9.3 Boats whose warning signal has not been made shall avoid the starting area during the starting sequence for other races.
- 9.4 If any part of a boat's hull is on the course side of the starting line at her starting signal and she is identified, the race committee will attempt to hail her sail number. Failure to hail her number, failure of her to hear such a hail, or the order in which boats are hailed will not be grounds for a redress for request. This changes RRS 62.1(a).
- 9.5 A boat that does not start within 5 minutes after her starting signal will be scored Did Not Start without a hearing. This changes RRS A5.1 and A5.2.

10 THE FINISH

- 10.1 The finishing line is between a staff displaying a blue flag on the finishing boat at the port end and the course side of Sippican Harbor Lighted Red Buoy "2" (F1 R) at Centerboard Shoal (BYC mark "G").
- 10.2 If the race committee is absent when a boat finishes, the navigator of the finishing boat shall record her finishing time (GPS time) when her mast is abeam of and within 25 feet of Sippican Harbor Lighted Red Buoy "2" (F1 R) at Centerboard Shoal (BYC mark "G"). This time shall be **sent via text message** to the scorer/registrar as soon as possible. (The Scorer's contact information will be provided via the registrant's email after registration.)

11 TIME LIMITS

- 11.1 The Mark 1 Time Limit is 8 hours.
- 11.2 If no boat has passed the first mark within the Mark 1 Time Limit, the race will be abandoned.

12 HEARING REQUESTS

- 12.1 Requests for hearings and requests for redress shall be written on forms available online on the [BYC Racing webpage](#) or in an envelope on the bulletin board on the BYC porch. Completed forms must be emailed to protest@beverlyyachtclub.org within 90 minutes from the time of the

protesting boat's recorded finish.

- 12.2 Notices will be posted no later than 90 minutes after the protest time limit for the last boat to finish to inform competitors of hearings in which they are parties or named as witnesses. Hearings will be held in the BYC clubhouse.

13 SCORING

- 13.1 Each boat's finish position will be calculated using their PHRF rating and Time on Distance (TOD) scoring or ORR WL5050 TOT rating.
- 13.2 The course distance will be compiled using the USCG Light List GPS coordinates of the marks. The length of each leg of the course will be determined by the race committee to the nearest tenth of a nautical mile.

14 SAFETY REGULATIONS

- 14.1 [DP] A boat that retires from racing shall notify the race committee at 508-353-2824 or by calling the BYC (508-748-0540), at the first reasonable opportunity
- 14.2 All competitors shall wear properly fastened, USCG approved personal flotation devices at all times while on deck.

15 PRIZES

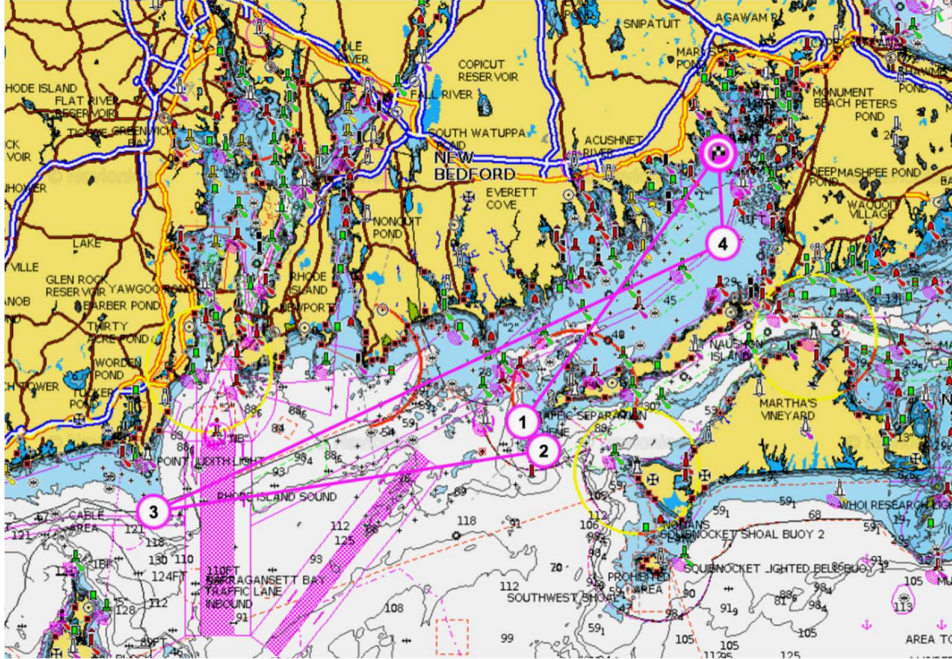
- 15.1 Prizes will be awarded for boats finishing first and second on corrected time in their class and one for fastest elapsed time. More prizes may be awarded at the discretion of the organizers.

16 RISK STATEMENT

- 16.1 RRS 3 states: 'The responsibility for a boat's decision to participate in a race or to continue to race is hers alone.' By participating in this event each competitor agrees and acknowledges that sailing is a potentially dangerous activity with inherent risks. These risks include strong winds and rough seas, sudden changes in weather, failure of equipment, boat handling errors, poor seamanship by other boats, loss of balance on an unstable platform and fatigue resulting in increased risk of injury.
Inherent in the sport of sailing is the risk of permanent, catastrophic injury or death by drowning, trauma, hypothermia or other causes.

SI ADDENDUM A

Salty 100 Course diagram



Salty 100 Short Course Option

