



## **2021 Sunfish Championships**

**International Masters – Mar 7-10, 2021**

**US Nationals at Midwinters – Mar 12-14, 2021**

## **Sailing Instructions**

**Organizing Authority: Davis Island Yacht Club, Tampa, FL 33606**

**Endorsed by International Sunfish™ Class Association (ISCA)**

**Endorsed by US Sunfish™ Class Association (USSCA)**

### **1 RULES**

- 1.1 The regatta will be governed by the rules as defined in the Racing Rules of Sailing (RRS).
- 1.2 The US SAILING Prescriptions to RRS 60.3, 61.4, 67, 70.5(a), 76.1 and Appendix R will apply. In addition, Appendix U and Appendix V will apply, amending NoR 1.2. US Sailing Prescriptions are contained in their entirety at: <https://cdn.ussailing.org/wp-content/uploads/2020/11/2021-2024-US-Prescriptions-Final.pdf>

### **2 NOTICES TO COMPETITORS**

Notices to competitors will be posted on the official notice board located on the West exterior wall on the lower level of the Clubhouse AND on the RegattaNetwork event sites –

Masters - <https://www.regattanetwork.com/event/21633>

Midwinters - <https://www.regattanetwork.com/event/21635>

### **3 CHANGES TO THE SAILING INSTRUCTIONS**

Any change to the sailing instructions will be posted before 0900 on the day it will take effect, except that any change to the schedule of races will be posted by 2000 on the day before it will take effect.

### **4 SIGNALS MADE ASHORE**

- 4.1 The signals made ashore will be displayed from the flagpole at the West end of the property.
- 4.2 When flag AP is displayed ashore '1 minute' is replaced with 'not less than 45 minutes' in the race signal AP.

## 5 SCHEDULE OF RACES for Masters and Midwinters

Masters Date	Midwinters Date	Time	Activity	Comment
Sun, Mar 7	<b>Thu, Mar 11</b>	1400 <b>1930</b>	Practice racing (Masters only) <b>Zoom Competitor Meeting</b>	NO practice race for Mids NOTE time - changes NoR 5
Mon, Mar 8	Fri, Mar 12	1000	First Scheduled Warning	Four races are scheduled
Tue, Mar 9	Sat, Mar 13	1000	First Scheduled Warning	Four races are scheduled
Wed, Mar 10	Sun, Mar 14	1000 1400	First Scheduled Warning No Warning after this time	Three races are scheduled

- 5.1 One extra race per day may be sailed provided that racing does not get more than one race ahead of schedule.
- 5.2 To alert boats that a race or sequence will begin soon, the orange start line flag will be displayed with multiple sounds approximately five (5) minutes before a warning signal is made.

## 6 CLASS FLAG

No Class Flag will be used.

## 7 THE COURSE

- 7.1 The diagrams in Attachment 2 show the courses, including the approximate angle between legs, the order in which marks are to be passed, and the side on which each mark is to be left.
- 7.2 If a gate mark (4s or 4p) is missing the remaining mark shall be left to port.

## 8 MARKS

- 8.1 Marks 1, 2, 3, 4S and 4P will be orange tetrahedrons.
- 8.2 Mark 1a (offset) will be a small orange ball.
- 8.3 The new mark, as provided in SI 10, will be a green tetrahedron.
- 8.4 The starting marks will be race committee vessels displaying orange flags.
- 8.5 The finishing marks (Fs and Fp) will be a race committee vessel displaying a blue flag and a yellow tetrahedron.

## 9 THE START

- 9.1 Races will be started by using Appendix U – Audible-Signal Racing System.
- 9.2 The start line will be between staffs displaying orange flags on the starting marks.
- 9.3 At or before the warning, the start penalty flag (if other than a P flag) will be displayed with no sound. If the start is under flag P, no flag will be displayed.
- 9.4 A boat starting later than five (5) minutes after her starting signal will be scored Did Not Start without a hearing. This changes RRS A5.1 and A5.2.

## 10 CHANGE OF THE NEXT LEG OF THE COURSE

To change the next leg of the course, the race committee will lay a new mark (or move the gate or move the finishing line) and remove the original mark as soon as practicable. When in subsequent change, a new mark is replaced, it will be replaced by an original mark.

## 11 THE FINISH

The finishing line will be between a staff displaying a blue flag on the race committee vessel and the course side of a yellow tetrahedron.

## 12 PENALTY SYSTEM

12.1 Appendix V will apply.

12.2 Penalties for breaking a rule other than those of Part 2, RRS 31 or RRS 42 will be determined by the protest committee. Penalties may be less than disqualification. The scoring abbreviation for a discretionary penalty imposed under this instruction will be DPI.

## 13 TIME LIMITS AND TARGET TIMES

13.1 Time limits and target times are as follows:

Race Time Limit	Mark 1 Time Limit	Target Time
90 minutes	30 minutes	50 minutes

13.2 If no boat has passed Mark 1 within the Mark 1 time limit the race will be abandoned. Failure to meet the target time will not be grounds for redress. This changes RRS 62.1(a).

13.3 Boats still racing 30 minutes after the first boat sails the course and finishes will be scored Time Limit Expired (TLE), without a hearing. The score will be equal to the number of boats which sail the course and finish plus two (2) points. This changes RRS 35, A4.1, A5.1, A5.2, and A10.

## 14 PROTESTS AND REQUESTS FOR REDRESS

14.1 Protest forms are available from the Jury Secretary, located in or in the vicinity of the Regatta Room on the lower level of DIYC. Cell phone pictures of completed forms shall be emailed to [bjryan@tampabay.rr.com](mailto:bjryan@tampabay.rr.com) within the appropriate time limit and must include the name of the skipper of the boat, that person's email address, and phone numbers. This supplements RRS 61.2.

14.2 The protest time limit is **45** minutes after the RC signal boat docks after the last race of the day or when RC signals no more racing today, whichever is later.

14.3 Notices will be posted on the online Official Notice Board (see SI 2) no later than 30 minutes after the protest time limit to inform competitors of hearings in which they are parties or named as witnesses.

14.4 Hearings will be held in the Regatta Room (lower level of DIYC) or outside the Regatta Room on the lower level of the club house.

14.5 Breaches of NoR 1.5, 11, and 12 will not be grounds for a protest by a boat, changing RRS 60.1(a).

14.6 Breaches of SI 15 and 16 will not be grounds for a protest by a boat, changing RRS 60.1(a).

14.7 Scoring Inquiries should be submitted online at the Regatta Network Notice Board (far right tab):

Masters - [https://www.regattanetwork.com/event/21633#\\_newsroom](https://www.regattanetwork.com/event/21633#_newsroom)

Midwinters - [https://www.regattanetwork.com/event/21635#\\_newsroom](https://www.regattanetwork.com/event/21635#_newsroom)

**15 SAFETY REGULATIONS**

- 15.1 Check-in Procedures: Prior to the warning signal for the first race of each day in which it intends to compete, each boat shall check in by sailing past the stern of the race committee signal boat on starboard tack, hail her sail number and obtain acknowledgement of the race committee. Boats that fail to check-in may be scored DNS. This changes RRS A5.1.
- 15.2 A boat that retires from a race shall notify the race committee as soon as practicable. Failure by any competitor to inform the race committee either by hail, or by telephone to the Clubhouse at (813) 251-1158 that they have retired from racing may result in a 20% penalty in the competitor’s last completed race. This also changes RRS A5.1.

**16 OFFICIAL VESSELS**

- 16.1 Official vessels will be marked as follows:
  - Race Committee Vessels: Blue flag with RC
  - Judge Vessels: Flag “J” or blue flag with letter J
  - Safety Vessels: Numeral 4 pennant
- 16.2 Failure of an official vessel to display the designated flag shall not be grounds for redress. This changes RRS 62.1(a).

**17 SUPPORT VESSELS**

No competitor shall be towed to the race area. Boats shall not be towed from the race area unless flag W is displayed on a race committee vessel. When flag W is displayed a tow shall not exceed 5 knots.

**18 TRASH DISPOSAL**

Trash may be placed aboard support or official vessels.

**19 RADIO COMMUNICATION**

Except in emergency, a boat shall neither make radio transmissions while racing nor receive radio communications not available to all boats. This restriction also applies to mobile telephones.

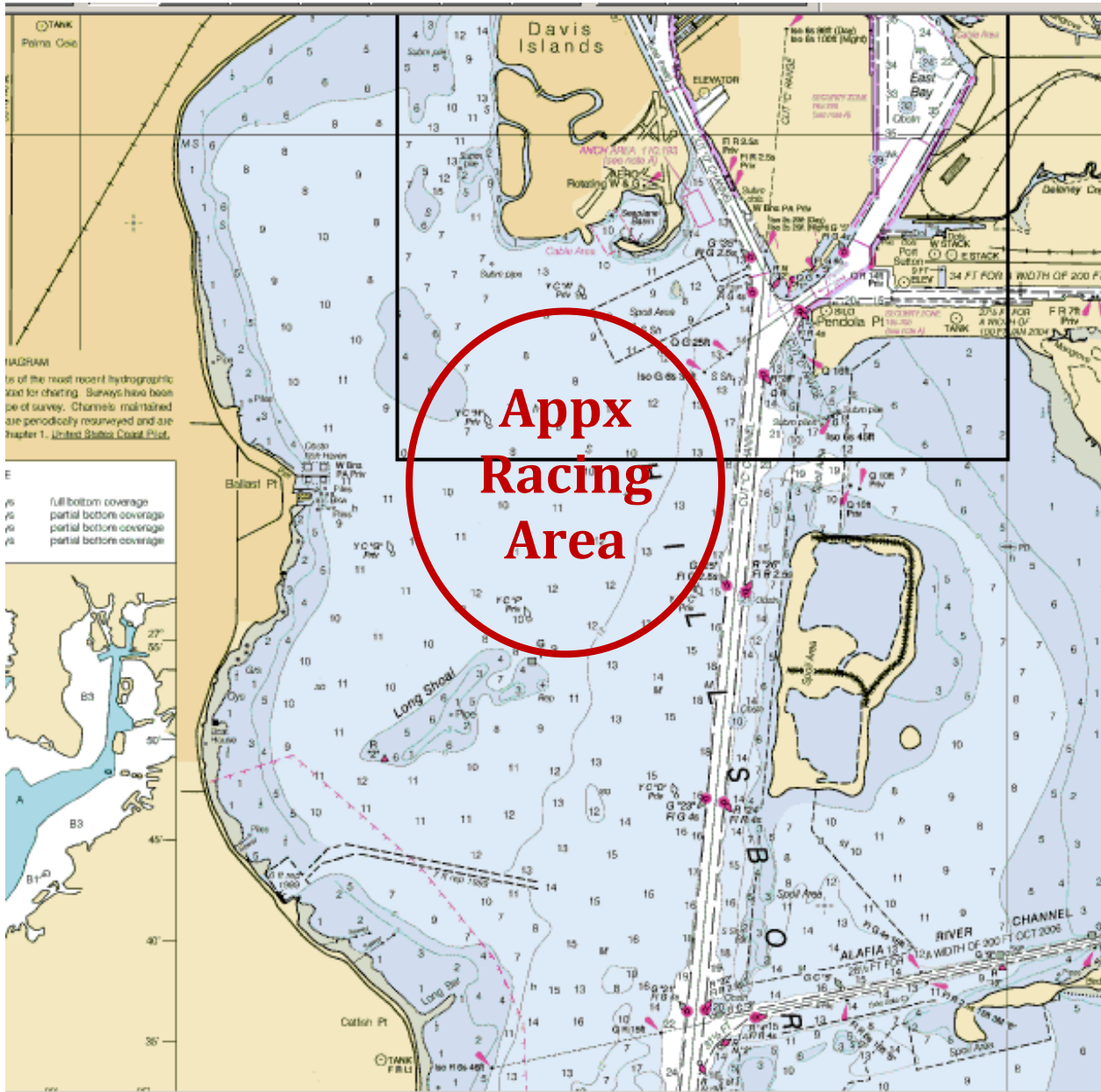
**QR Code for Masters**



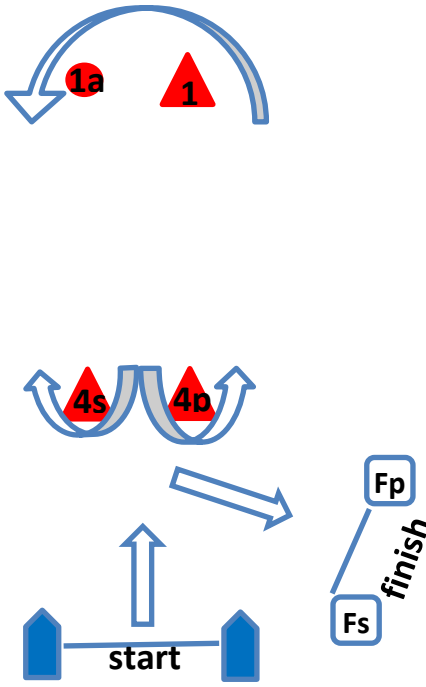
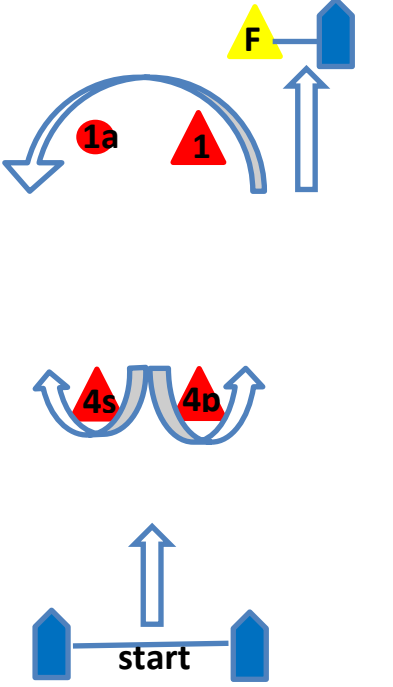
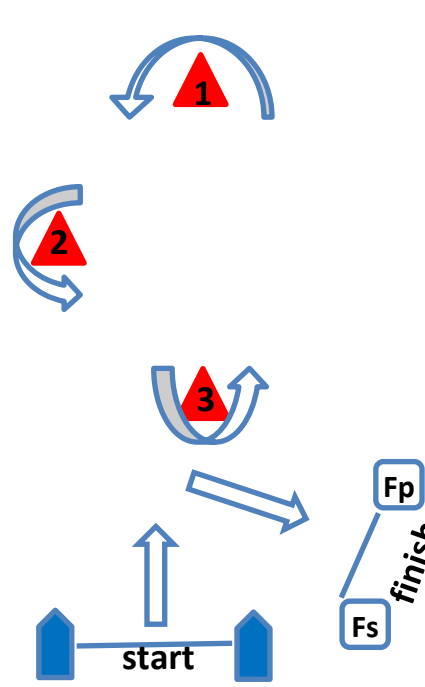
**QR Code for Midwinters**



# Attachment 1 - Approximate Racing Area



## Attachment 2 – Possible Courses

<b>Course L4 –</b> Windward/Leeward (4 legs) Reach to Finish	<b>Course W5 -</b> Windward/Leeward/finish to Windward (5 legs)	<b>Course T5 –</b> Triangle/Windward/Leeward Reach to Finish
		
Mark Rounding Order – Start, 1, OS, 4s/4p, 1, OS, 4p, finish (Fs/Fp)	Mark Rounding Order – Start, 1, OS, 4s/4p, 1, OS, 4s/4p, finish	Mark Rounding Order – Start, 1, 2, 3, 1, 3, finish (Fs/Fp)