



DAVIS ISLAND
Yacht Club
1315 SEVERN - TAMPA, FLORIDA 33606

2021 School's Out Regatta
May 29-30, 2021
Sailing Instructions



Sponsors



SALT  PINES





School's Out Regatta

May 29-30, 2021

Organizing Authority - Davis Island Yacht Club

SAILING INSTRUCTIONS

1 RULES

- 1.1 The regatta will be governed by the *rules* as defined in *The Racing Rules of Sailing*.
- 1.2 The US Sailing Prescription to RRS 63.2 will not apply.

2 NOTICES TO COMPETITORS

Notices to competitors will be posted on the official notice board located on the west exterior wall on the lower level of the Clubhouse.

3 CHANGES TO SAILING INSTRUCTIONS

Any change to the sailing instructions will be posted before 0930 on the day it will take effect, except that any change to the schedule of races will be posted by 2000 on the day before it will take effect.

4 SIGNALS MADE ASHORE

- 4.1 Signals made ashore will be displayed from the flagpole at the west end of the property.
- 4.2 When flag AP is displayed ashore, '1 minute' is replaced by 'not less than 45 minutes' in the race signal AP.

5 SCHEDULE OF RACES

Day	Time	
Sat	0800-0930	Check-in
	0930	Optimist coaches' meeting
	1000	Laser/C420 coaches' meeting
	1030	Optimist first warning
	1100	Laser/C420 first warning
	1900	No Warning signals after
Sun	0930	First Warning – All classes
	1500	No Warning signals after

6 CLASS FLAGS, RACING AREAS, MARKS

The class flags, racing areas, and marks are described in Attachment A.

7 THE COURSES

- 7.1 The diagrams in Attachment B show the courses, including the approximate angles between legs, the

order in which marks are to be passed, and the side on which each mark is to be left.

- 7.2 No later than the warning signal, the race committee signal vessel will display the course designation on a white board.

8 THE START

- 8.1 The starting line will be between the course side of a staff displaying an orange flag on the race committee signal vessel at the starboard end and the course side of the port-end starting mark.
- 8.2 Boats whose warning signal has not been made shall avoid the starting area during the starting sequence for other races.
- 8.3 A boat may not start more than 5 minutes after her starting signal.
- 8.4 The starting sequence for each race circle is described in Attachment A.
- 8.5 Classes may be combined for starts.

9 RECALLS

The race committee will NOT hail the sail numbers of OCS boats after the starting signal.

10 CHANGE OF THE NEXT LEG OF THE COURSE

- 10.1 To change the next leg of the course, the race committee will move the original mark (or the finishing line) to a new position.
- 10.2 RRS 33(b) will not apply, changes to the course length will not be signaled.

11 THE FINISH

The finishing line will be between the course side of a staff displaying a blue flag on a race committee vessel and the course side of the finishing mark.

12 TIME LIMITS

- 12.1 The time limit for the first boat in each race to sail the course and finish is 60 minutes. This changes the first sentence of RRS 35.

12.2 Boats still racing more than 15 minutes after the first boat sails the course and finishes may be "finished in place" by the race committee.

13 PROTESTS AND REQUESTS FOR REDRESS

- 13.1 Add to RRS 61.1(a) "The protesting boat shall inform the Race Committee of the boat(s) being protested at the finishing line immediately after finishing."
- 13.2 Protest forms are available at the Regatta Room. Protests and requests for redress or reopening shall be delivered there within 60 minutes after the race committee finish vessel docks. The docking time will be posted.
- 13.3 Notices will be posted within 15 minutes after the protest time limit to inform competitors of hearings in which they are parties or named as witnesses. Protests will be heard in the approximate order of receipt in the Regatta Room.
- 13.4 Notices of protests by the race committee or protest committee will be posted to inform boats under RRS 61.1(b).
- 13.5 Breaches of SI 15.1, 15.2, 15.3, 15.4, 16.1, 16.2 will not be grounds for a protest by a boat. This changes RRS 60.1(a). Penalties for these breaches may be less than disqualification if the protest committee so decides.

14 SCORING

- 14.1 It is the intention of the race committee to conduct as many races as practical each day. One race for a class or fleet must be completed to constitute a regatta for that class or fleet.
- 14.2 When fewer than five races have been completed, a boat's series score will be the total of her race scores. When five or more races have been completed, a boat's series score will be the sum of her race scores excluding her worst score.

15 SAFETY REGULATIONS

- 15.1 Each morning prior to sailing, and upon returning to shore after sailing, every competitor shall go to the Regatta Room on the ground level of the DIYC club house and sign next to their name. The time limit for check-in upon returning to shore is 45 minutes after the race committee finish vessel docks. Failure to comply with this instruction shall result in a 20% penalty for the first race that day.
- 15.2 A boat retiring from a race or leaving the course before racing for the day is completed, shall notify the race committee before leaving the course, or when that is impossible, an official at DIYC immediately after arrival ashore. Boats failing to do

so may be protested by the race committee, and may result in disqualification of a boat from the day's racing.

- 15.3 All competitors shall wear a PFD at all times while on the water (except while effecting a change of clothing or personal gear). Flag Y will not be flown.

16 SUPPORT BOATS, COMMUNICATIONS BY R.C.

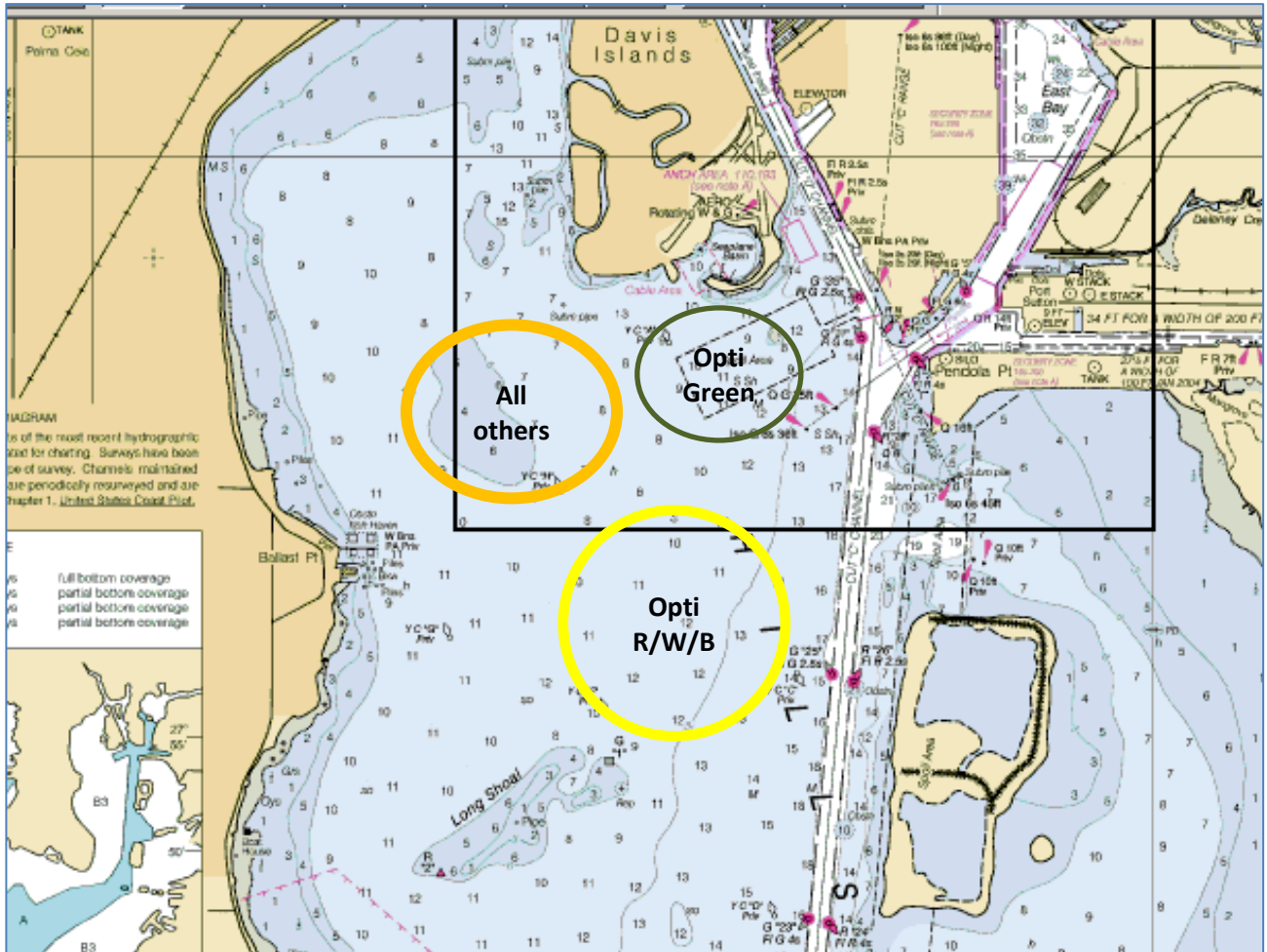
- 16.1 The Regatta Chair will monitor VHF channel 73. Attachment A lists the other VHF channels used.
- 16.2 Except for Opti Green fleet, team leaders, coaches and other support personnel shall stay outside areas where boats are racing from the time of the preparatory signal for the first start until all boats have finished or retired or the race committee signals a postponement or abandonment.
- 16.3 Coaching of Opti Green fleet competitors while racing is permitted, however coaching shall be limited to skippers in the bottom half of the fleet in any given race. Coach boats shall neither create wakes nor otherwise interfere with competitors. Coaches shall provide fair and consistent support to all competitors, not just their team or sailor.
- 16.4 Those parents who serve on race committee vessels (including patrol and safety vessels) may not communicate in any way with their sailors or their coaches from the time the orange starting line flags are displayed until their sailor has finished his or her race (the "No Communication Period"). The only exception to this rule is when directed by the Principal Race Officer or they are involved with safety and rescue. During periods of time when communication with coaches and/or sailors is permissible, these parents shall not transfer any strategic or tactical information (including audio or video recordings) gained due to their advantageous location on the racecourse or their access to race committee communications, unless such information is made available to all sailors, coaches and other parents/supporters. Communications of a personal nature (e.g., 'great race', 'get something to drink', 'go see your coach', etc.) are always permissible outside the "No Communication Period".

17 DISCLAIMER OF LIABILITY

Competitors participate in the regatta entirely at their own risk. See RRS 4, Decision to Race. The organizing authority will not accept any liability for material damage or personal injury or death sustained in conjunction with or prior to, during, or after the regatta.

Attachment A

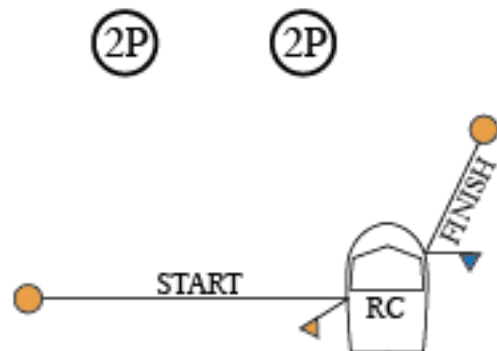
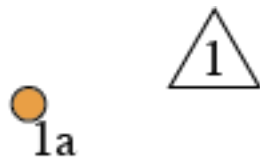
Racing Areas, Mark Descriptions, Class Flags, Starting Sequence



Course	VHF	Mark Descriptions	Class Flags	Starting Sequence
Opti Green	5	Marks 1, 2P, & 2P – Green tetrahedrons 1a – Small orange ball Start/finish – Small orange balls	Opti Green - White G on Green background	5 minute
Opti R/W/B	69	Marks 1, 2P, & 2P – Large yellow balls 1a – Small orange ball Start/finish – Small orange balls	Opti R/W/B - Opti symbol on white background	5 minute
Laser, Radial, 4.7, & C420	72	Marks 1, 2P, & 2P – Yellow tetrahedrons 1a – Small orange ball Start/finish – Small orange balls	Laser Full – red Laser logo on white Laser 4.7 – red Laser logo on yellow Laser radial- red laser logo on green 420 – 420 on white	5 minute

NOTE – if one there is only one leeward mark it shall be rounded to port.

Attachment B – COURSE DIAGRAM



Start – 1 to port – 1a to port – between 2S and 2P –
1 to port, 1a to port – between 2S and 2P – Finish

Note: if there is only one leeward mark, round it to port